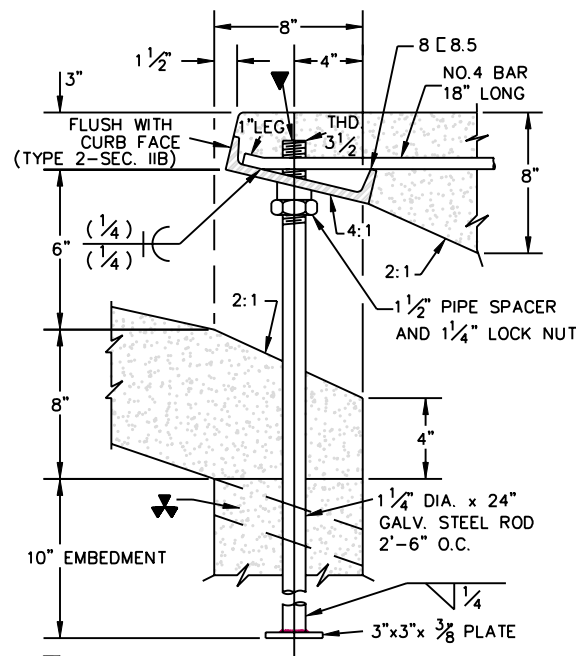
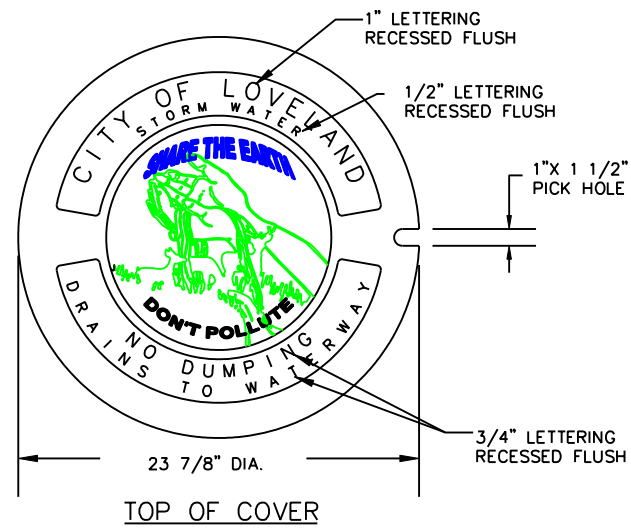


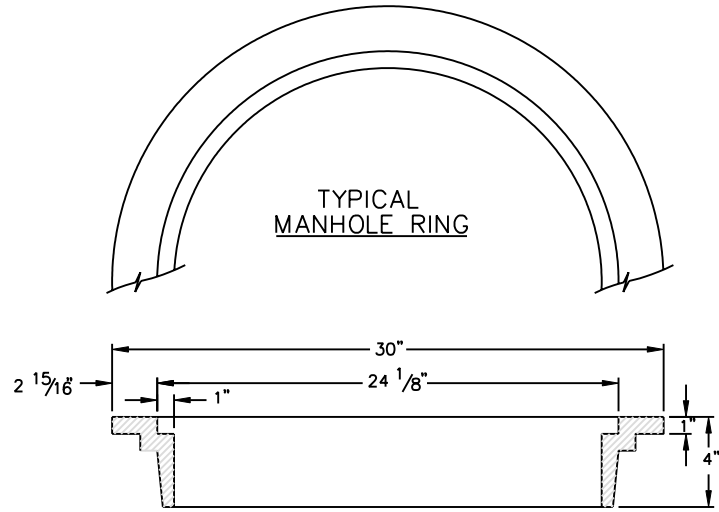
* WHEN A TYPE R INLET IS USED WITH MOUNTABLE CURB AND GUTTER, 5 FT. TRANSITION SHALL BE CONSTRUCTED. TRANSITION SHALL BE PAID FOR AS CURB AND GUTTER.



▼ CURB FACE ASSEMBLY
PLACE ENTIRE ASSEMBLY BEFORE POURING CONCRETE.



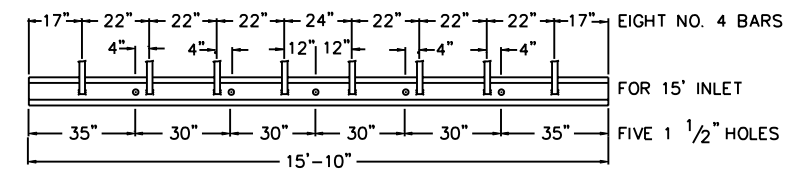
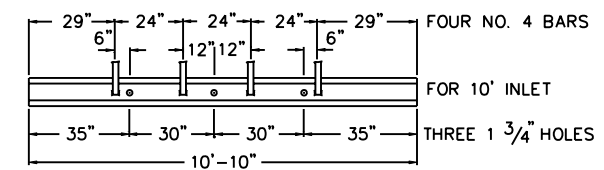
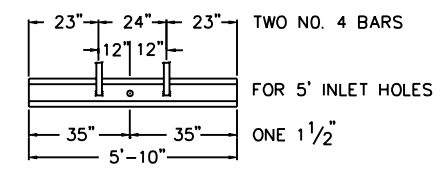
TOP OF COVER



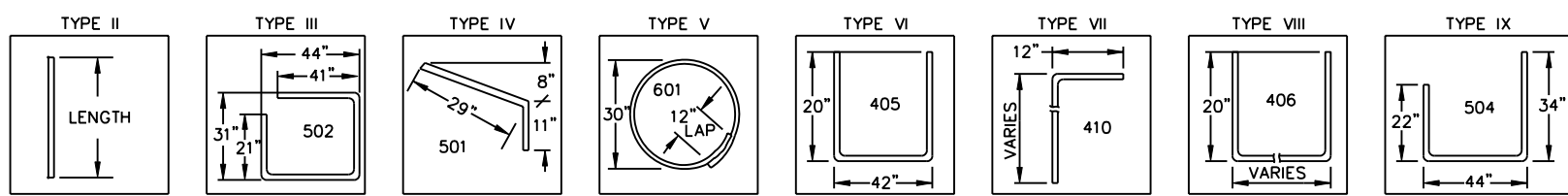
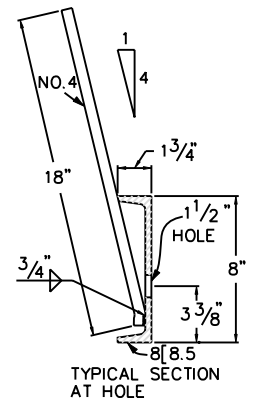
WEIGHTS: COVER = 125 LBS.
RING = 135 LBS.
TOTAL = 260 LBS.

GENERAL NOTES:


1. ALL CONCRETE SHALL BE CLASS B.
2. CONCRETE WALLS SHALL BE FORMED ON BOTH SIDES AND SHALL BE 8 IN. THICK.
3. INLET STEPS SHALL BE SPACED 10" TO 14" O.C. AND SHALL CONFORM TO CITY OF LOVELAND SPECIFICATIONS.
4. CURB FACE ASSEMBLY SHALL BE GALVANIZED AFTER WELDING.
5. EXPOSED CONCRETE CORNERS SHALL BE CHAMFERED 3/4 IN. CURB AND GUTTER CORNERS SHALL BE FINISHED TO MATCH THE EXISTING CURB AND GUTTER BEYOND THE TRANSITION GUTTER.
6. REINFORCING BARS SHALL BE DEFORMED AND SHALL HAVE A 2 IN. MINIMUM CLEARANCE.
7. DIMENSIONS AND WEIGHTS OF TYPICAL MANHOLE RING AND COVER ARE NOMINAL.
8. ALL COVERS AND FRAMES SHALL BE GRAY OR DUCTILE IRON CONFORMING TO CITY OF LOVELAND SPEC. 05500. MANHOLE COVER - EAST JORDAN IRON WORKS NO. 2405A OR EQUAL.
9. SINCE PIPE ENTRIES INTO THE INLET ARE VARIABLE, THE DIMENSIONS SHOWN ARE TYPICAL. ACTUAL DIMENSIONS AND QUANTITIES FOR CONCRETE AND REINFORCEMENT SHALL BE AS REQUIRED IN THE WORK.
10. STRUCTURAL STEEL SHALL BE GALVANIZED AND SHALL CONFORM TO THE REQUIREMENTS OF CITY OF LOVELAND SPEC. 05500.
11. INFORMATION FROM CDOT STANDARD PLAN M-604-12 IS REFERENCED IN THIS DETAIL.



CHANNEL LAYOUT DETAILS



BAR BENDING DIAGRAMS
DIMENSIONS ARE OUT-TO-OUT OF BAR

	CITY OF LOVELAND PUBLIC WORKS DEPT. STORMWATER	CURB INLET TYPE R		DRAWING SW-5B
		STORMWATER CONSTRUCTION DRAWINGS		
		APPROVED: KWG	DATE: 8/17/07	