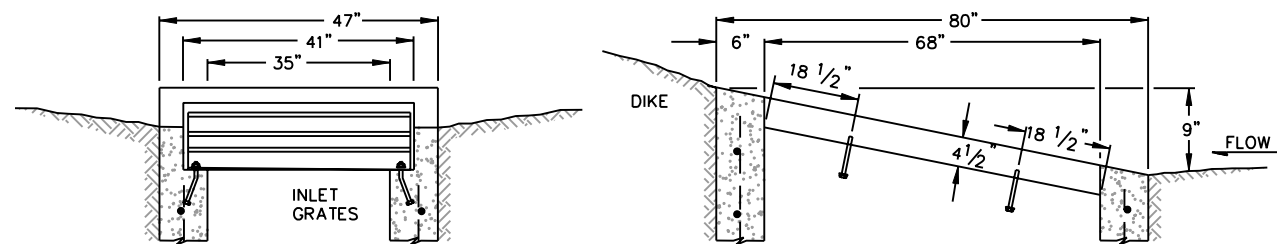
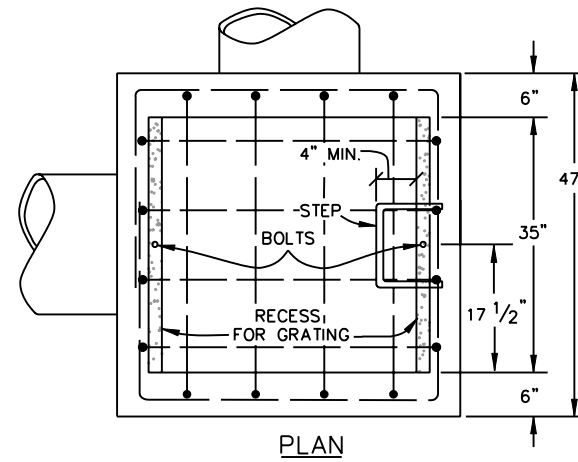


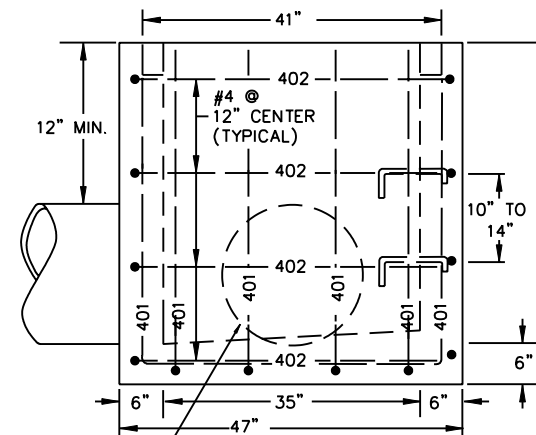
TRANSVERSE CROSS SECTION LONGITUDINAL CROSS SECTION  
 INLET, TYPE D - LEVEL GRADE INSTALLATION  
 TYPE D INLETS HAVE TWO GRATES PER INLET



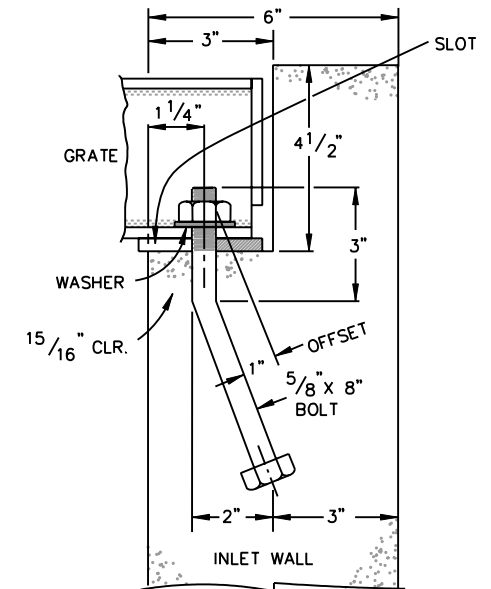
TRANSVERSE CROSS SECTION LONGITUDINAL CROSS SECTION  
 INLET, TYPE D - SLOPING GRADE INSTALLATION  
 TYPE D INLETS HAVE TWO GRATES PER INLET



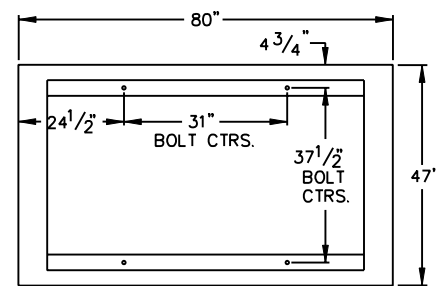
PLAN



CROSS SECTION  
 CONCRETE INLET, TYPE C

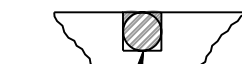


GRATE INSTALLATION  
 DETAIL

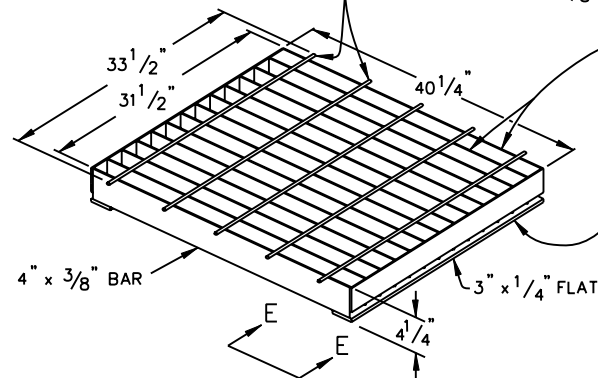


PLAN VIEW  
 SHOWING ANCHOR BOLT LAYOUT

OUTLET PIPE D (FT)	MIN. H (FT)
1.5	3.0
2.0	3.0
2.5	3.5
3.0	4.0
3.5	4.5
4.0	5.0

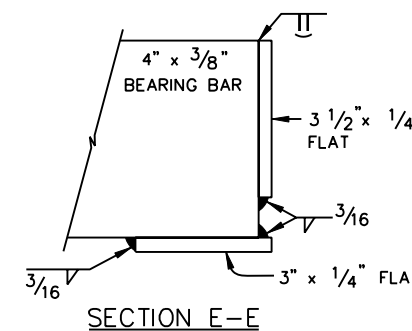


3/8" TYPICAL HEX. ROUND OR TWISTED CROSS BARS AT 8" CTRS., WELDED TO 4" x 3/8" BEARING BARS SPACED AT 2 3/8" CTRS.

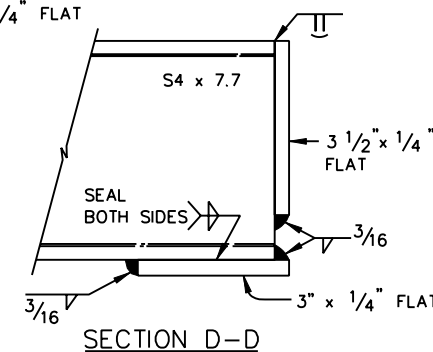


CLOSE MESH GRATE

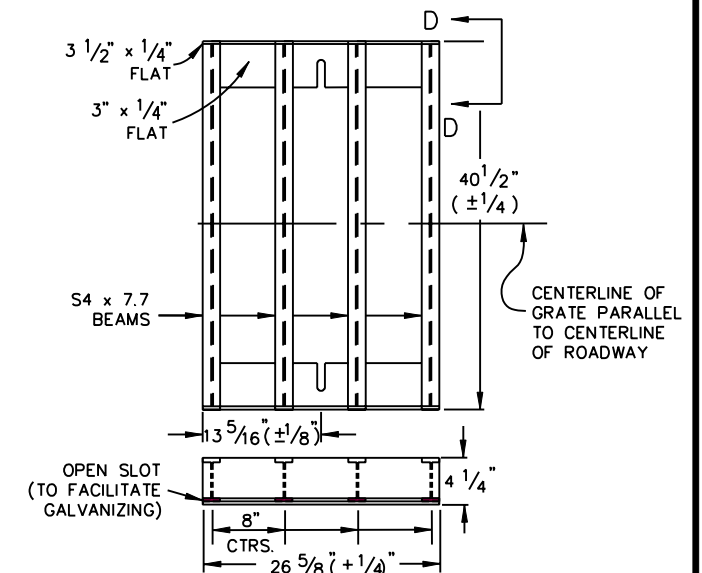
HYDRAULICALLY INEFFICIENT, POOR TOLERANCE FOR DEBRIS AND ICE. USE FOR PEDESTRIAN AND BICYCLE AREAS.



SECTION E-E



SECTION D-D



STANDARD INLET GRATE

OPEN SLOT (TO FACILITATE GALVANIZING)

CENTERLINE OF GRATE PARALLEL TO CENTERLINE OF ROADWAY

GENERAL NOTES

1. CONCRETE SHALL BE CLASS B. INLET MAY BE CAST-IN-PLACE OR PRECAST.
2. REINFORCING BARS SHALL BE DEFORMED, AND SHALL HAVE A MINIMUM 2 IN. CLEARANCE.
3. CONCRETE SLOPE AND DITCH PAVING SHALL CONFORM TO CDOT SECTION 507. REINFORCEMENT FOR CONCRETE SLOPE PAVING SHALL BE 6 X 6 - W1.4 X W1.4 OR 6 X 6 - W2.1 X W2.1.
4. STRUCTURAL STEEL FOR GRATES AND GRATE INSTALLATION HARDWARE SHALL BE GALVANIZED AND SHALL BE IN ACCORDANCE WITH CITY OF LOVELAND SPEC 05500.
5. THE STANDARD INLET GRATES SHALL BE USED ON ALL TYPE C INLETS UNLESS CLOSE MESH GRATES ARE SPECIFIED ON THE PLANS.
6. STEPS SHALL BE PROVIDED WHEN INLET DIMENSION "H" EXCEEDS 3 FT.-6 IN. AND SHALL BE IN ACCORDANCE WITH AASHTO M 199.
7. INFORMATION FROM CDOT STANDARD PLANS M-604-10 & M-604-11 ARE REFERENCED IN THIS DETAIL. THE CDOT PLANS INCLUDE QUANTITY TAKEOFFS.

INLETS, TYPE C & D



CITY OF LOVELAND  
 PUBLIC WORKS DEPT.  
 STORMWATER

STORMWATER  
 CONSTRUCTION  
 DRAWINGS

APPROVED: KWG  
 DATE: 8/17/07  
 DRAWN BY: TBK

DRAWING  
 SW-4