



VICINITY MAP

**AERIAL PHOTOGRAPHY**

TOPOGRAPHY REVISED BY PHOTOGRAMMETRIC METHODS FROM AERIAL PHOTOGRAPHY TAKEN MARCH 16, 2004

THIS MAP COMPLIES WITH NATIONAL MAP ACCURACY STANDARDS

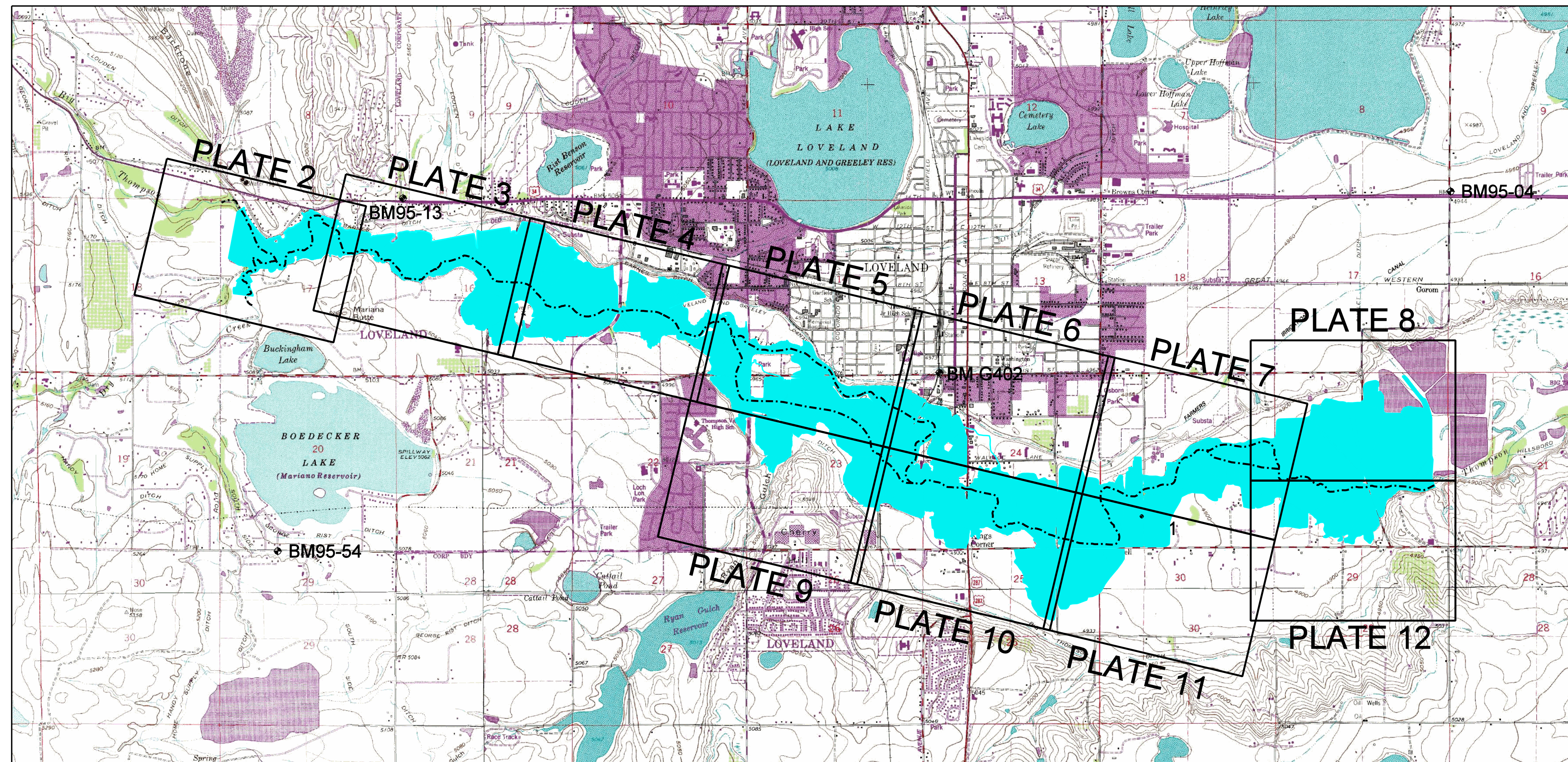
**BASIS OF CONTROL**

**BASIS OF HORIZONTAL CONTROL:**  
 COLORADO STATE PLANE COORDINATE SYSTEMS NORTH ZONE (NAD83)  
 "NGS STATION G 402" AND "LARIMER COUNTY MONUMENT 39536"

1. NGS STATION G 402: N 1,386,252.940 (NAD83) E 3,118,042.761 (NAD83) EL 4791.98 (NAVD88)
2. LARIMER COUNTY MONUMENT 39536: N 1,370,435.854 (NAD83) E 3,122,851.916 (NAD83)

**BASIS OF VERTICAL CONTROL:**  
 NAVD88 CONVERTED FROM CITY OF LOVELAND CONTROL POINTS (BASED ON NGVD29)

1. NGS STATION G 402: EL 4971.98 (NAVD88)
2. CITY OF LOVELAND BM 95-04: EL 4948.47 (NAVD88)
3. CITY OF LOVELAND BM 95-13: EL 5061.53 (NAVD88)
4. CITY OF LOVELAND BM 95-41: EL 4910.52 (NAVD88)
5. CITY OF LOVELAND BM 95-54: EL 5102.45 (NAVD88)



INDEX MAP

Revisions	Date
Comment: Revisions	8-29-05

Designed By: NRT
Drawn By: CAK
Checked By: JUF
Approved By: JHH
Job #: 32-0884
Date: 6-3-05