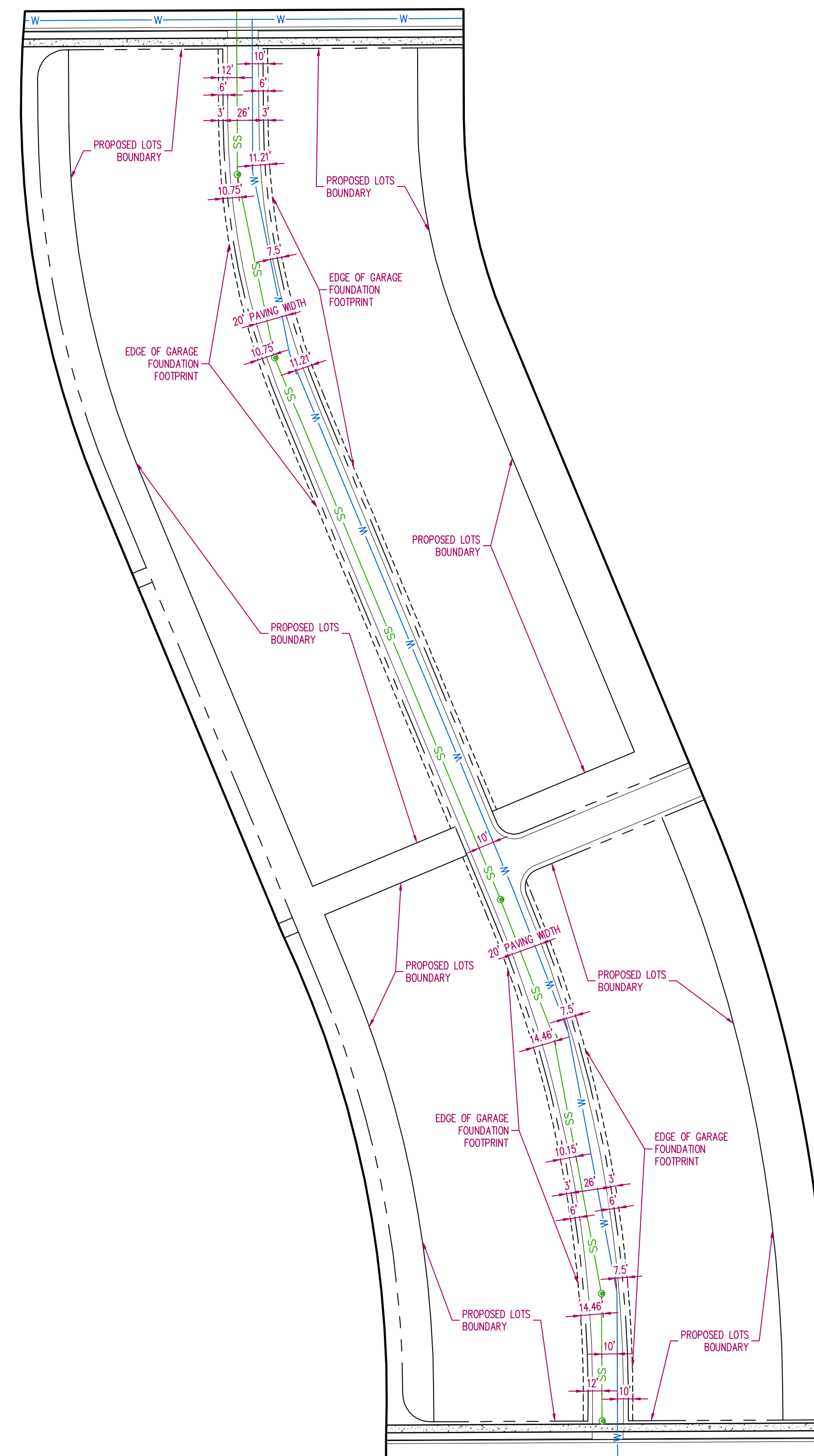
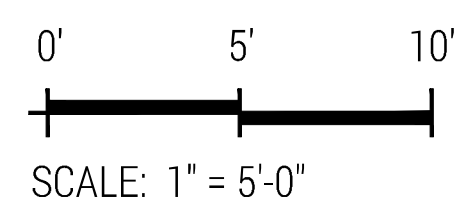
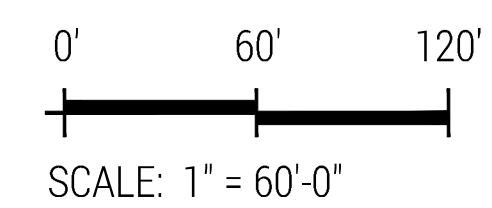


**WATER SERVICE AND SANITARY SEWER SERVICE IN PRIVATE DRIVES DETAIL**



**WATER MAIN AND SANITARY SEWER MAIN LAYOUT AROUND CURVES IN PRIVATE DRIVES**



**UTILITY LAYOUT NOTES**

- TWO PUBLIC UTILITY LINES MAY RUN PARALLEL TO EACH OTHER AND BE LOCATED WITHIN THE 20' WIDTH OF PAVEMENT THAT IS WITHIN THE 26' WIDE PRIVATE DRIVE CLEAR ZONE. A THIRD PUBLIC UTILITY MAY CROSS THE OTHERS BUT NOT RUN PARALLEL TO THEM.
- WATER MAIN MAY BE A MINIMUM OF 4.5' FROM THE EDGE OF THE 26' WIDE CLEAR ZONE AND A MINIMUM OF 1.5' FROM THE EDGE OF THE PAVED 20' WIDTH AROUND HORIZONTAL CURVES IN THE PRIVATE DRIVES.
- WATER MAIN MAY BE A MINIMUM OF 7.5' FROM THE FOUNDATION OF A STRUCTURE AROUND HORIZONTAL CURVES IN THE PRIVATE DRIVES.
- WATER SERVICE LINES PRIOR TO METERS MAY BE A MINIMUM OF 6' FROM DRY UTILITIES HORIZONTALLY.
- SANITARY SEWER MAIN MAY BE A MINIMUM OF 10' FROM THE FOUNDATION OF A STRUCTURE.
- SANITARY SEWER MAIN MAY BE A MINIMUM OF 5' AWAY FROM THE CENTER OF WATER METER PITS AROUND HORIZONTAL CURVES IN THE PRIVATE DRIVES. ALL SANITARY SEWER JOINTS SHALL BE WRAPPED IF LOCATED WITHIN 10' OF WATER PIPE, METER, OR APPURTENANCE.
- SANITARY SEWER MAIN MAY BE A MINIMUM OF 7' AWAY FROM THE CENTER OF WATER METER PITS ALONG STRAIGHT SECTIONS OF THE PRIVATE DRIVES. ALL SANITARY SEWER JOINTS SHALL BE WRAPPED IF LOCATED WITHIN 10' OF WATER PIPE, METER, OR APPURTENANCE.
- SANITARY SEWER MAIN MAY BE A MINIMUM OF 7' FROM THE EDGE OF THE 26' WIDE CLEAR ZONE AND A MINIMUM OF 4' FROM THE EDGE OF THE PAVED 20' WIDTH AROUND HORIZONTAL CURVES IN THE PRIVATE DRIVES.
- THIS DEVELOPMENT WILL NOT REQUIRE GAS INFRASTRUCTURE. A STANDARD 10' POWER AND FIBER EASEMENT MAY BE USED THROUGHOUT THE DEVELOPMENT ALONG PUBLIC ROAD RIGHT-OF-WAY. THIS EASEMENT WILL BE INDENED TO ACCOMMODATE CITY OF LOVELAND POWER FACILITIES SUCH AS TRANSFORMERS AND VAULTS FOR A LENGTH THAT PROVIDES A MINIMUM OF 5' FROM OUTSIDE EDGES OF FACILITY. EASEMENTS AT EDGES OF PRIVATE DRIVES WILL BE COORDINATED WITH CITY OF LOVELAND POWER TO ACCOMMODATE FACILITIES UTILIZING THE 5' CLEARANCE FROM OUTSIDE EDGES OF FACILITIES SUCH AS TRANSFORMERS AND VAULTS.

