

# Willow Bend Park, Universal Access Playground and Natural Area

## Overview

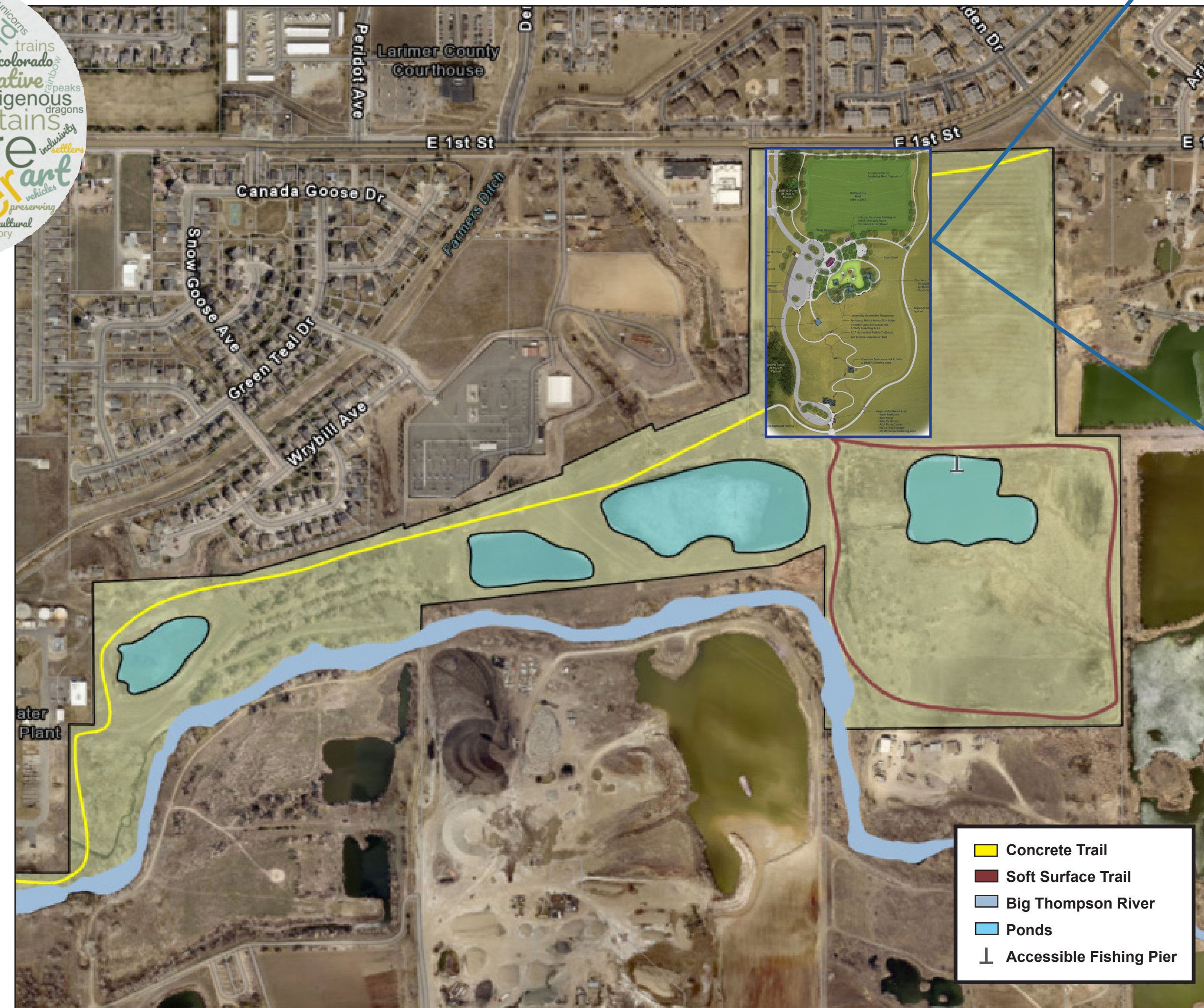
The City of Loveland is preparing to build the new Willow Bend Park, Universal Access Playground and Natural Area, a facility dedicated to serving individuals with disabilities along with their families, friends and caregivers. The project focal point will be area's first inclusive neighborhood park featuring a shaded universal access playground, sports court, play field, picnic patio, and restroom facilities. A 10-acre transition area between active play area and high-quality wildlife and waterfowl habitat will host programmed and independent passive recreation, environmental education, nature-play adventure, a trailhead for the regional East Big Thompson Trail, and an accessible fishing pier. The balance of the property, approximately 150 acres, will be dedicated to passive recreation and conservation of habitat areas.

## Community Engagement

In the spirit of inclusivity, Loveland Parks & Recreation took a 'community first' approach to the design of this park with a primary focus on listening to community voices throughout the design process.

The public engagement process included a community survey that received 350 responses from individuals from a wide range of ages, abilities and backgrounds.

Relying on the community survey input as a driving force in how the park concepts took shape, a public open house presented two park design concepts. Based on feedback, a third hybrid resulted in the current park, playground and natural area design.



## Natural Area

- Shared access
- Parking and trailhead area
- ADA Fishing dock and fishing pond
- Internal trail system: concrete and soft surface
- Shade structures
- Vault restroom
- Environmental education amphitheater
- Wildlife viewing



## Recreation Trail

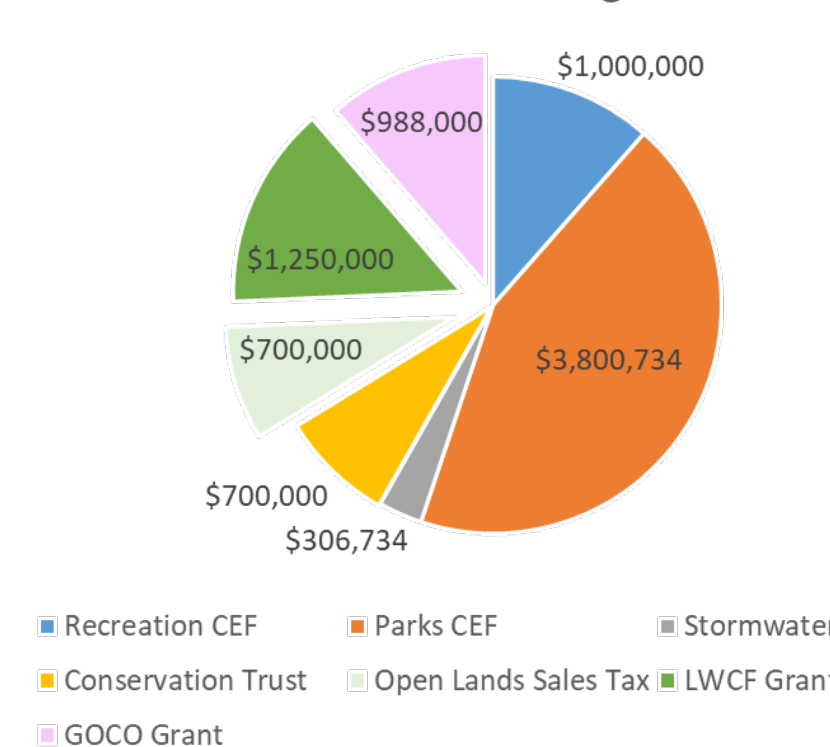
East Big Thompson Trail segment connecting to downtown Loveland and the I-25 corridor



## Funding

The construction of Willow Bend Park, Universal Access Playground and Natural Area will be funded primarily from Capital Expansion Fees appropriated through the 2023 and 2024 approved city budget with no construction impact to the General Fund. Construction costs will be offset by \$2.38 million in grant funding from Great Outdoors Colorado and the Land and Water Conservation Fund.

Construction Funding Sources



## Park Site

- New site entry and parking area
- Play field
- Playground
- Picnic shelter
- Sport court
- Walking path circuit
- Mountain overlook
- Recreation trail access

## Universal Access Playground and Amenities

- Accessible play equipment
- Seating areas
- ADA restroom facility including adult changing station
- ADA charging stations
- National Demonstration Site for Inclusive Play

