

## CULTURAL SERVICES BOARD MINUTES

Tuesday December 7, 2010

4:30 P.M.

### LOVELAND MUSEUM/GALLERY

503 N. Lincoln Ave.

Loveland, CO 80537

- I. The January 25, 2011 meeting of the Cultural Services Board was called to order at 4:31 p.m. by Juanita Cisneros in the Upstairs Conference Room of the Loveland Museum/Gallery.

**Board members present:** Rose Watson, Jan DesJardin, Dena Kirk, Kris Ortmann, Juanita Cisneros, Kerri McDermid and Peggy Schwarz. Also present was City Councilor Kent Solt. Staff present included Susan Ison, Jan Sawyer, Maureen Corey and Michelle Standiford. Guests present were Pastor Jonathan Wiggins (Resurrection Fellowship Church) and Sarah Bultema (*Reporter Herald*).

#### A. Additions/Changes to the Agenda

Due to staff availability, under Museum Reporters, item 4 will be moved to item 1 followed by an exhibit tour as item 2. "Chagoya" will move up to item 3. All remaining items will follow. New item, number 9, will be "Changes to Boards and Commissions."

#### B. Additions or Corrections/Changes to the December 7<sup>th</sup>, 2010 Minutes

Jan DesJardin was listed as being in attendance last month when in fact, she was unavailable that evening. Her name will be removed from being present.

#### C. Approval of the October 26, 2010 Minutes

Peggy Schwarz motioned to accept the minutes as amended and Kris Ortmann seconded. All approved.

#### D. Public Comments

Visiting guests were introduced. In addition, new Board member Kerri McDermid was formally welcomed. Juanita Cisneros and Jan DesJardin were both reappointed for another term.

## II. Agenda Items

### A. Board Reports

Kris Ortmann reported that she likes the changes in the new admission sign. She has seen guests consistently making donations and hasn't seen people turn away as in the past.

Juanita Cisneros attended Leadership Loveland. There was much interest in the Chagoya piece.

## B. Museum Reports

### 1. Exhibit “Bubble Diagram”

Maureen Corey presented the revised “Exhibit Planning” guide to the Board. This will be available at the Museum as well as on the web site.

Peggy Schwarz recommended a change to the last line in the first paragraph under “Serendipity” to “*Remarkable exhibit options become available through networking and regular contact with museum professional, Loveland residents, museum supporters, artists, and art enthusiasts*”. Rose Watson made a motion to accept the Exhibit Planning Guide with Peggy’s requested change, Jan DesJardin seconded and all approved.

# ART EXHIBITS

What & Wherefore?

## EXHIBIT PLANNING AT LOVELAND MUSEUM/GALLERY

*Art unifies the community through the expression of ideas and concepts that create shared experiences.*

*The art exhibit schedule intends to inspire Loveland residents with a varied and challenging artistic experience.*

**EXHIBIT DECISIONS ARE BASED ON FOUR MAIN CONSIDERATIONS:**

- Quality of the exhibit  
*mature body of work, accomplished artistic technique, relevance to current art trends, art historical value*
- Available display space in galleries
- Budgetary concerns
- Variation of exhibit schedule by medium, theme, artistic period, and local/regional or national/international artists

**HOW DO EXHIBITS GET TO THE LOVELAND MUSEUM?**

- Traveling exhibits, created by exhibition service agencies or other institutions  
*Example: Dali Illustrates Dante's Divine Comedy (Nov 2009), by Smith Kramer exhibitions*
- Exhibits curated in-house  
Includes group exhibits, solo artist shows, subject/theme specific or by artistic period  
*Example: Art Harvest (2007, loans from 15 institutions and artists); Integral Elements (2010, group show of 4 artists)*
- Serendipity...  
Museum staff is always open to new and exciting exhibit ideas. Through networking and regular contact with museum professionals, Loveland residents, museum supporters, artists, and art enthusiasts, remarkable exhibit options become available.  
*Examples: Bud Shark and His Indelible Ink (2010); Wayne Thiebaud: 70 Years of Painting (May-August 2009)*

*The aim of art is to represent not the outward appearance of things, but their inward significance.*  
-Aristotle

---



503 N. Lincoln Ave. Loveland, CO 80537  
970.962.2410  
[www.cityofloveland.org/museum](http://www.cityofloveland.org/museum)

## **2. Exhibit Tour**

Maureen Corey led the Board on a tour of the current exhibits. She also presented a guide of the remaining 2011 planned exhibits as well as the gallery guides for the current exhibits.

### **2011 Exhibitions**

## **3. Chagoya**

Pastor Wiggins spoke with Enrique Chagoya about the portrait of Jesus that is being commissioned for Resurrection Fellowship Church. When the piece is completed, Resurrection Fellowship would like to have the piece displayed at the Museum prior to its permanent installation at the church. Pastor Wiggins felt there would be much public interest in viewing the piece and it would be more accessible at the Museum as well as present a positive message by having it in a public place. Enrique Chagoya felt the piece would be completed by the end of February. With framing taking an additional 2 weeks, it could possibly not be available for a couple months yet. The unframed size of the piece is 60x80 inches. Staff will discuss possible display locations.

Susan discussed the new piece with the new City Manager last week and received his opinions on bringing the piece to the Museum. In general, he felt it would be a positive opportunity for some community reconciliation to happen. Kent Solt thought it would be uplifting but could bring a lot of emotions back to the surface from last October.

Juanita recommended a display time of 4-6 weeks. Pastor Wiggins stated that there would not be a formal dedication at the church. Instead, their congregation will celebrate the piece here at the Museum.

Peggy Schwarz suggested that staff prepare for a variety of public reactions and be prepared for dialogue. Susan will work with staff to prepare material to inform and educate the public on the context of why the piece is here and what it represents.

Kerri McDermid inquired about the possibility of having a recorded video of Enrique Chagoya explaining his new piece and the story surrounding it from his perspective. Pastor Wiggins has had several conversations with Mr. Chagoya and feels there are pieces from those talks that would be beneficial to highlight as a message of dialogue and civility. While you can't have an absence of differing opinions, Pastor Wiggins feels that the portrait can be the catalyst for providing a civil forum for discussion. The Board considered options for preparing for public conversation and using the art piece as a means to create dialogue through a possible panel discussion. The Board was in agreement to move forward and bring the piece to the Museum. Staff will keep them apprised of the dates as the piece nears completion.

#### 4. **Threads to China**

Susan presented the brochure for the *Threads to China* programs and invited the Board members to attend the activities.



### **Rialto Reports**

#### 1. **2010 Year-End Figures**

2010 saw a slight decrease in the numbers.

- 347 events, down 6%
- 45,953 in attendance, down 3%

The biggest factor for these drops came from the month of May. In 2009, Loveland Community Theater did the premier of the play *Beets*. This locally written and produced play was a huge show for the Theater. The difference in the attendance numbers came from that production alone. There was no big production this past May to make up for this difference.

Revenue totals for 2010 remained steady and in line with 2009.

Looking ahead to 2011, Jan Sawyer is predicting high attendance due to upcoming, high quality shows and increase in bookings.

#### 2. **February Events**

Yu Wei, the dancer from China, will be at the Rialto as part of the *Threads to China* activities on Friday, January 28<sup>th</sup>. She will also be performing in the schools.

*Ethel*, a contemporary string quartet, will be performing on February 4<sup>th</sup>. The February 13<sup>th</sup> show of *The Wailin' Jennys* has been selling really well.

#### 3. **Rialto Bridge Update**

The Rialto Bridge project is going to City Council on February 15<sup>th</sup> for a first reading and first vote. Second reading will occur on March 1<sup>st</sup>. At this point, construction schedule has demolition beginning after the second reading. Staff is considering an event surrounding the demolition called "Demolition and Donuts" since the construction will begin in the morning.

#### 4. **White Paper**

Jan prepared a report for City Council summarizing Theater operations and explained where the Theater is now, what the staff anticipates for increase in revenues, and options for increasing sustainability and cost recovery. The paper went to City Council last week and Jan would appreciate comments from the Board as well.

Susan shared that the Community Marketing Commission has divided up their grants into three categories (Conventions/Sports, Marketing, and Event Support). There has been some consideration into applying for a grant to market the Rialto Bridge and staff will

need to begin thinking about how the building will be used and what the fee structure will be. The grant would be used to get this information out to the public and promote the new space. Kerri McDermid has a marketing background and was interested in assisting with this project.

## Museum Reports

### 5. New Admission Sign

Item previously discussed under Board Reports.

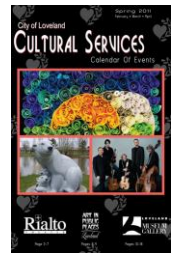
### 6. Sustainability and CEF Meetings

Kris Ortmann is representing the Cultural Services Board at the upcoming CEF meetings and Rose Watson and Juanita Cisneros are representing the Board at the sustainability meetings. Meeting information was distributed to these representatives.

The CEF (Capital Expansion Fee) meetings will discuss the issues surrounding the fees and whether or not they should be removed or restructured. These fees are used for growth and would be used for the Museum expansion. There are complex issues surrounding the fees and their benefits and drawbacks will be re-evaluated.

### 7. Calendar of Events

The spring Calendar of Events was distributed for the Board. Staff likes how the black cover turned out.



### 8. Name of New Museum

Staff has discussed the idea of changing the Museum's name once the expansion is completed. The "/" is somewhat awkward. The "gallery" term was added years ago to reflect that not only were we a museum, we also sold art as well. The term has more of a commercial connotation to it. This was a concern raised by the accrediting team when they visited a few months ago.

The Board was asked to think about a possible name change or simply reformatting the current name to "Loveland Museum and Gallery". However, we need to make sure to incorporate both the art and the history aspects as well as represent that we have multiple galleries, not just one. This topic will be revisited in the upcoming months.

### 9. Changes to the Boards and Commissions

Susan shared a document she received from the City Manager about the current 23 City Boards and Commissions. The City Manager is seeking input on if these Boards should remain the same, combine, or meet less often as there is an impact on staff and the City Council's representative's time to attend all these meetings. There was concern from some Board members that if we meet less often, then some items could be missed throughout the year. On average, the Cultural Services Board currently meets 10 times per year. The Board is open to the possibility of meeting every other month or combining the summer months into 1 meeting. Susan will report back to the Board about the decisions.

### **III. Adjournment**

#### **Miscellaneous items:**

Susan shared the new “Youth Classes” postcard, the revised comment card, the 2010 “By the Numbers for the Youth and Family Programs” report, and an article in *Family Circle* magazine featuring a local family recommended by Jenni Dobson.

In addition, the Board was asked about their 2011 Goals and 2010 Accomplishments. Peggy Schwarz volunteered to review previous Goals and Accomplishments and email her recommended changes and revisions to the Board for additional input. The final version will be available at the February Board meeting.

#### **Next Meeting:**

Tuesday, February 22<sup>nd</sup>, 2011 at 4:30 pm.

Motion to adjourn the meeting at 6:07 pm was made by Peggy Schwarz. Dena Kirk seconded. All approved.

Submitted by Michelle Standiford



## **Main Gallery exhibitions 2011**

***Lyrical Lines***  
***Thompson Valley School District Art Show***  
February 26-April 11, 2011

Hosted by Loveland Museum biannually, exhibit features artwork of R2-J students in grades 1<sup>st</sup> through 12<sup>th</sup>. The exhibit is part of the ArtSteps program, a collaborative partnership between Loveland Museum/Gallery, as represented by Jenni Dobson, and Thompson School District.



***Twentieth Annual Governor's Show***  
April 24-June 5, 2011

An annual exhibition featuring 58 of the state's finest painters and sculptors, with Gala opening reception April 23. Exhibition is organized as a fundraiser by Loveland Rotary Clubs.



***HORSE: Essence and Beauty*** Alysa Bennett; Joseph Piccillo; Jozef Sumichrast  
June 18-September 18, 2011

Artworks in this group exhibition expose the legendary strength, beauty and power of the horse. The horse has mythical status that is derived from its place in history and kinship with human development. The horse is perceived to have singular and unique status among animals that are associated with human civilization. They stand alone as symbols of strength, loyalty and intelligence—attributes that have infinite possibilities as subjects of creative expression. This exhibit will explore the inherent potential of these animals and the ways in which each artist crafts a unique relationship with their subject matter.

**Alysa Bennett (Painting and sculpture)**



**Joseph Piccillo (drawing)**



**Jozef Sumichrast (sculpture)**





### **Chuck Close: A Couple of Ways of Doing Something**

*Photographs by Chuck Close, Poems by Bob Holman*

October 1, 2011-January 1, 2012

The exhibition contains fifteen daguerreotypes, twenty digital pigment prints, six tapestries, two photogravures, and twenty accompanying poems. In 1999, Chuck Close began working with the one of the oldest processes in photography—the daguerreotype. Over the course of two years, he worked with daguerreotype master Jerry Spagnoli to conquer the complexities of this venerable process, which yields images of astonishing detail and gravity. Close photographed many of the same artist-friends who have made regular appearances in his paintings over the years, including Laurie Anderson, Philip Glass, Bob Holman, Andres Serrano, Cindy Sherman, James Siena, Lorna Simpson, Gregory Crewdson, Carroll Dunham, Elizabeth Murray, Kiki Smith, James Turrell, Ellen Gallagher, Cecily Brown, Lyle Ashton Harris, Elizabeth Peyton, Terry Winters, Lisa Yuskavage, and Robert Wilson, as well as himself. Each individual's portrait is included in the exhibit.

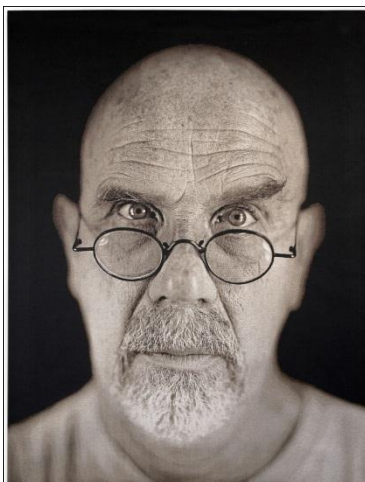
Lyrical praise poems by Bob Holman, a celebrated New York School poet, were commissioned to accompany each photograph. The poems are concise, witty, and beautifully typeset to reflect the personality and style of each person portrayed.

As individual portraits, each daguerreotype offers an intimate and immensely revealing study of the subject, extending the hyperrealist tradition of portraiture for which Close is renowned. For the exhibit, Close has used the daguerreotypes as a base to create works in other media: tapestries, photogravures, and digital pigment prints. The collected work becomes a transfixing group portrait of Close's influential and highly creative circle of friends and colleagues, as well as an exploration of challenging photographic mediums.

Chuck Close is a renowned American painter, printmaker, and photographer. His 1998 traveling retrospective, organized by the Museum of Modern Art in New York, confirmed his place in the pantheon of major contemporary artists. His paintings, prints, and photographs, represented by PaceWildenstein in New York, are widely exhibited and collected.

Bob Holman, a celebrated and widely published New York School poet, originated and hosted the famous Poetry Slams at the Nuyorican Poets Café (1988–96) and now runs the Bowery Poetry Club.

Travelling exhibition organized by Aperture Exhibitions.



## **Foote Gallery Exhibitions 2011**

### ***Eye Dance: In Honor, Beauty and Place Photographs by Robert Campagna***

February 12-April 10, 2011

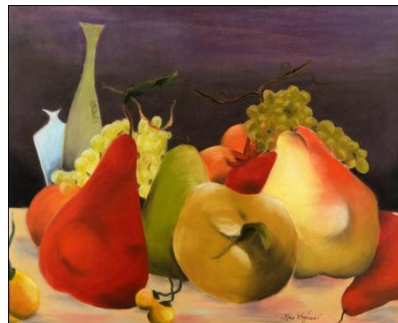
Since October, 2000 Bob Campagna has been an artist-in-residence for the Thompson School District. During more than 45 workshops, he traveled with over 800 students to photographically explore the region within 40 miles of Loveland. The fifty black and white photographs featured in this exhibit represent the hidden treasures that were encountered on these excursions. The people and places herein represent the sudden beauty, the serendipity and the generosity encountered on these journeys.



### ***Tatjana Krizmanic Pastels***

June 18-September 12, 2011

Landscapes and cityscapes by Tatjana Krizmanic are marked by a warm cheerfulness, where bright colors and swirling perspectives make the everyday come alive. Active, surreal and inviting, her work reflects the influences of Chagall, Matisse, Klimt and Picasso.



*Born in Zagreb, Tatjana started painting at age fourteen. After studying at the University of Zagreb, she moved to Washington, D.C. where she completed her studies at Georgetown University. Since her first exhibit in Boulder, Colorado, she has built a strong following, and her paintings reside in numerous private collections and museums. Krizmanic divides her time between her home on the Adriatic coast and Boulder, Colorado.*

## ***Loveland Art Studio Tour Exhibition***

September 24-October 25, 2011

Preview exhibition for Loveland Studio Tour. More than 30 artists with a wide representation of media exhibit artworks in preparation for the 2011 studio tour. This exhibition exemplifies Loveland Museum's commitment to local art and support of Loveland's artist community.

