



Library getting job seekers back to work



In-person assistance and online tools are helping Loveland residents prepare to rejoin the job market

The pandemic upended our everyday routines, and for some, unfortunately, it resulted in job loss. Unemployed individuals must figure out how to retool and get a paycheck coming in again.

In the last several years, the Loveland Public Library (LPL) has broadened its services to the community. According to Dr. Amy Phillips, adult and collection services manager, libraries are no longer just a place to get books, media, or study in a quiet corner. They are now community hubs where people can access various resources, and today that includes job preparation and coaching.

When the pandemic hit and job loss accelerated rapidly, providing these resources to the community became a top priority for LPL staff. “We have always provided job-seeking resources to our patrons, but with the pandemic, we knew we needed to approach that more intentionally,” said Phillips. “At that time, we already had our Career Online High School, but we needed to quickly expand our services for those who had just lost their jobs.”

Phillips’ first step was to use Coronavirus Aid, Relief, and Economic Security Act (CARES) funding to offer Jobs Now – an online platform that provides resume templates, help with resume writing, job coaching, and career exploration. “A large part of our goal was not only to help get people back to work, but to help them secure jobs that they really wanted, and which would be sustain-

able long-term, regardless of pandemics or whatever else was happening in the world,” she said.

More recently, the library has partnered with the Larimer County Economic and Workforce Development Center (LCEWDC) to provide one-on-one, in-person coaching on job interviewing skills and resume and cover letter writing. Job seekers have been unable to access the LCEWDC locally since the Loveland branch closed last year. In response, the library offered space to keep this valuable resource available to Lovelanders.

A brand new LCEWDC digital literacy program launches this month to help job seekers build and hone their skills to fill out online applications and succeed with online interviews. Upon completion of these sessions, participants receive a certificate. Residents can access LCEWDC services either by appointment or on a walk-in basis. LCEWDC job counselors are at the library from 1 to 4 p.m. every Monday.

The library also purchased 18 laptops, made possible through CARES Act funding, that residents can check out and take home for a week at a time to continue their job searches. The library has also been setting up a mobile computer lab at local events so that residents without internet at home can access library services.

Get help with your job search

For more information and to make an appointment for personal job coaching, go to lovlib.org/digitalskills, or call 970-962-2665.

Loveland Pulse explains the importance of ‘symmetrical speed internet’

Pulse is the City of Loveland’s brand new, community-owned, 100% fiber-optic internet network. Its benefits include affordability, reliability, local customer service, no data caps, no long-term service contracts -- and something referred to as “symmetrical speed.”

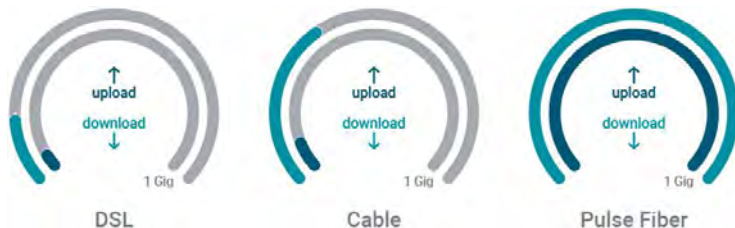
Symmetrical speed means that download speed and upload speed are the same.

In the past, download speed was what consumers paid attention to because that’s the speed at which information is brought to a computer or device from the internet. We wanted data to arrive to us quickly. We still do. But now, we live in an era where upload speed is important, too. We need our data to go from our devices back into the world without delay. With video and audio conferencing we need to be seen and heard clearly by colleagues, clients, teachers, and classmates. From transferring large files for work, to having clear conver-

sations with our doctors, upload speed is more important than it ever has been in the past - and our need for it will only increase over time.

Symmetrical speed brings you from a position of merely ingesting content to a place where you’re participating and creating connections with what you share back out into the world. Strong, solid upload speeds ensure that what you do and what you say are never disrupted by lag, gaps, or delay.

If you have any questions or want to know if service is available in your area now, call 970-962-2111. To learn more about Pulse visit: LovelandPulse.com.



New exhibit weaves cultural tapestry

The Loveland Museum’s current exhibit, *Magia Chicana*, features a survey of paintings, prints and sculpture by Denver-based artist Tony Ortega. This exhibit is on view through Nov. 13 and explores the magic of Hispanic culture woven into the tapestry of America. Iconic Mexican images are seen fused with American pop culture, creating cultural hybridity and a new perspective on familiar sign systems.



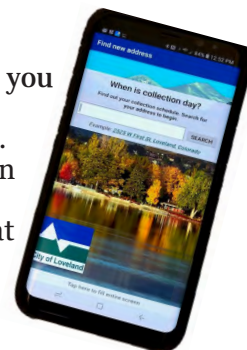
Visit lovelandmuseumgallery.org for more information on exhibits, classes and workshops.

Not sure how to dispose of something?

Visit lovgov.org/solidwaste to find out if a material can be reused, recycled, composted or disposed of.

Both the web and mobile apps help you recycle or dispose of materials ranging from aluminum foil to mercury to yarn. Find the mobile app in the App Store on your phone.

Loveland residents are already great recyclers. Use of the mobile and online web tools make it even easier to sort waste properly to help improve and protect our environment.



OPEN LANDS & TRAILS OCTOBER ACTIVITIES

FREE!

Nature Cabin Open: 10/5, 6, 9, 12, 19
at Viestenz-Smith Mountain Park

Tooth & Claw Nature Crafts: 10/9
at Viestenz-Smith Mountain Park

Guided Bird Walk: 10/16
at River’s Edge

Guided Autumn Walk: 10/20, 23
at Cottonwood Run

©Dan O'Donnell

QUESTIONS 970.962.2643

REGISTER offer.cityofloveland.org



Family Bike Ride

at Fairgrounds Park | 700 S. Railroad Ave.

Saturday | Oct 9 | 6:30P

1 mile loop or 3 mile out/back options. **5P check-in**
Registered participants will receive glow lights at check-in! Strider bikes, scooters & strollers welcome for 1 mile loop. Helmets required.

Individual: \$6 • Family*: \$28

*One adult must accompany each family (family fee covers up to 5 people)

QUESTIONS 970.962.2446 REGISTER lovgov.org/webtrac



SEPTEMBER-MARCH
RIALTO
PRESENTS
2021-2022

October 1: MOTONES & JERSEYS: IN CONCERT
October: GEORGE WINSTON
November 6: PAULA POUNDSTONE

TICKETS ON SALE NOW

RIALTO
THEATER
228 East Fourth Street • Loveland, CO 80537
RIALTOCENTER.ORG

City Update is a monthly publication of the City of Loveland. City Update is also available on the City’s website at www.lovgov.org/cityupdate. Your comments are welcome. Please call (970) 962-2302, or email oce@cityofloveland.org. The City of Loveland is committed to providing equal opportunity and does not discriminate on the basis of disability, race, color, national origin, religion, sexual orientation or gender. The City will make reasonable accommodations for citizens in accordance with the ADA. For questions, please call (970) 962-3319.



ATTENTION CREATIVE KIDS!!!

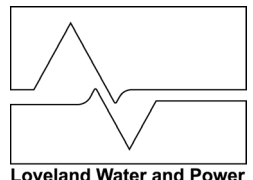
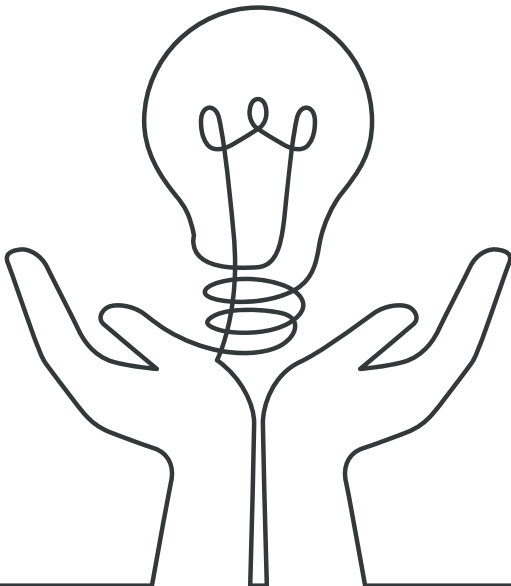
ENTER OUR PUBLIC POWER COLORING CONTEST.

Celebrate with Loveland Water and Power. Every October, we celebrate our public power community where we benefit from owning our own electric resources and the ability to make utility decisions based on our own local needs. To learn more about public power go to www.prpa.org.

Entry Rules:

- This contest is open to children up to the age of 12.
1 entry per individual.
- Submissions will be accepted via emails to efficiency@cityofloveland.org through Friday, October 15th.
- Email Entries should include:
 - A high-quality photo of the bottom half of this page colored in an imaginative way based on the prompt.
 - The first name and age of the artist.
- Eligible submissions will be highlighted on www.facebook.com/LovelandWaterandPower during the week of Oct 18-22. Public voting (hitting the like button) will be available during this time as well.
- Winners will be announced on our Facebook page and contacted via email to receive a \$20 prepaid cash gift card.
- Three ways to win:
 - 1 winner's art will be chosen as a favorite by LWP staff.
 - 1 winner's art will be chosen as a favorite through public voting on the LWP Facebook page.
 - 1 lucky winner will be chosen randomly.
- Questions may be directed to efficiency@cityofloveland.org or via Facebook direct message.
- Extra coloring sheets may be downloaded by visiting the link to our September issue of city update on www.lovelandwaterandpower.org/cityupdate

DRAW YOURSELF USING SOMETHING THAT RUNS ON ELECTRICITY!



UTILITY NEWS



Loveland Water and Power

MAIN SWITCHBOARD
970-962-3000

UTILITY BILLING
970-962-2111



visit us online... lovelandwaterandpower.org

IMAGINE A DAY WITHOUT WATER

19

GALLONS OF WATER TO GROW
ONE APPLE

Source: Science Media Center 2009



32

GALLONS OF WATER TO MAKE
ONE GLASS OF WINE

Source: Science Media Center 2009



40,000

GALLONS OF WATER TO MAKE
ONE CAR
(NOT COUNTING THE GAS)

Source: Science Media Center 2009



68,873

THE NUMBER OF DRINKING WATER AND WASTEWATER
SYSTEMS IN THE U.S.

Source: EPA

\$4.8 trillion

NEEDS TO BE INVESTED IN WATER INFRASTRUCTURE
OVER THE NEXT 20 YEARS TO MAINTAIN A STATE OF
GOOD REPAIR

Source: American Society of Civil Engineers

Value of Water
COALITION

thevalueofwater.org

DRIVE ELECTRIC WEEK

SEP 25-OCT 3, 2021

FIVE THINGS TO KNOW BEFORE YOU GO ELECTRIC

WHY DRIVE ELECTRIC?

EV drivers can save money on fuel charges compared to those driving gas-powered vehicles. Electricity in Loveland costs about 10.8 cents per kWh during the summer and nine cents per kWh during the non-summer months. The national average cost for gasoline was \$2.17 per gallon in 2020. Electric vehicle owners are also eligible for federal and state tax credits.

HOW DO I CHARGE IT?

Most electric vehicle owners charge their cars at home overnight, but as alternative fueling stations become more common in the U.S., people are charging away from home. Your electric vehicle comes with everything you need to plug in and fuel up.

WILL THIS CHANGE MY ELECTRIC BILL?

Your electric bill will increase. The electricity required to drive 15,000 miles per year in a compact electric vehicle costs an average of \$546, while the amount of gas required to drive the same distance costs \$1,255 or 130% more.

CAN I GET WHERE I NEED TO GO?

The average American's daily commute is less than 30 miles. The median driving range for all-electric vehicles is more than 250 miles. With growing electric vehicle charging infrastructure, you can charge along the way. Plug-in hybrids can also run on battery power or gasoline.

WHERE CAN I CHARGE ON THE GO?

The City of Loveland has five charging stations available for public use. Need to find a plug? Visit PlugShare.com or AFDC.energy.gov for interactive maps.

Sources: American Public Power Association, U.S. Department of Energy, PlugShare, Electrification Coalition, Plug In America, AAA

Learn more about EV's in Loveland at
www.lovelandwaterandpower.org/ElectricVehicles

Thinking of upgrading your furnace, AC, water heater, windows or insulation?

THERE'S A REBATE FOR THAT!

WHO? LWP electric customers in single-family detached homes are eligible.

HOW? You must use a qualifying service provider to complete the upgrade (sorry, DIY work isn't eligible). The contractor will submit the rebate application on your behalf!

For more information, visit
EFFICIENCYWORKS.ORG/HOMES

Rebate amounts vary by measure. Other terms and conditions apply.



Efficiency Works™
Estes Park | Fort Collins | Longmont | Loveland