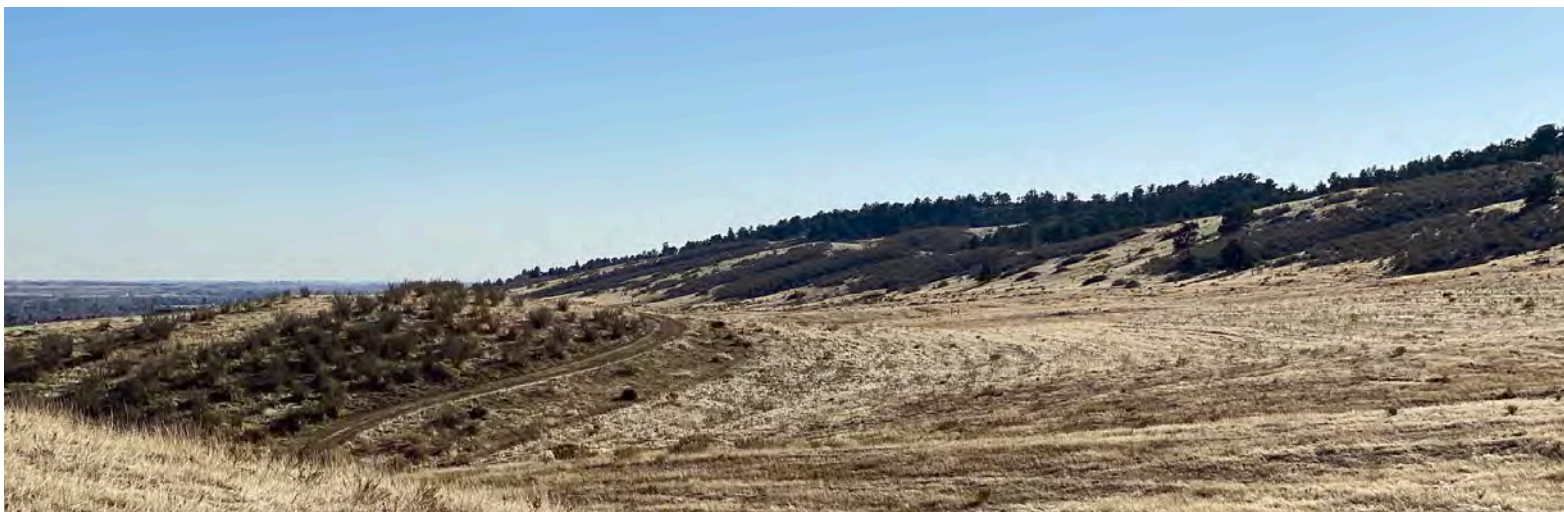




New Dakota Ridge expands Loveland's wildness



Addition provides new recreation opportunities for residents

A soon-to-be acquired piece of land will broaden and enrich Loveland's open land holdings. The Loveland Parks and Recreation's Open Lands Division recently received a grant from Great Outdoors Colorado (GOCO) that will secure funding for an area known as Dakota Ridge.

The 245-acre space is located in the foothills between 29th and 43rd Streets, and will provide future walking, hiking and recreational space, as well as more safe haven for area wildlife such as a snakes, reptiles, mule deer, bear, mountain lions and various species of birds.

The space will be home to future trails that allow access from Highway 34 through other preserved open lands including Skyline and Prairie Ridge Natural Areas, and connect to more than 35 miles of regional soft-surface trails. The Open Lands Division anticipates closing on the property this summer.

Other natural areas that will eventually connect to Loveland's trails include Coyote Ridge Natural Area, the Devil's Backbone Open Space and Rimrock Open Space, further enhancing Loveland's ongoing commitment to its 'wild' spaces, which have seen an uptick in use during the pandemic.

"Citizens have expressed an even greater appreciation and demand for local outdoors recreation and open spaces as a result of what we've been through this last year," said Marilyn Hilgenberg, Open Lands and Trails Manager. "We are proud that Loveland has been successful with grant

funding and proactive planning to protect the natural environment and provide new outdoor opportunities to address increased public interest."

Some exciting additional projects for Loveland open lands and trail systems are in the works, including:

- Near completion of the last segment of the City's 21-mile recreation trail loop that runs from Sunset Vista Natural Area east across the Burlington Northern Railroad. This paved off-street trail will improve the safety of pedestrians and bicyclists traveling along 57th Street. In addition, a 1-mile, soft-surface nature trail has been constructed by volunteers. It will open in summer 2021.
- Oxbow Natural Area will be upgraded with paved on-street parking, a new restroom, improved storm drainage, trails and nature play features – also slated for completion by summer 2021. The City of Loveland received \$330,000 in GOCO Resiliency Funding for this project.
- A half-mile of paved trail is being constructed at Old St. Louis Natural Area in conjunction with major storm water infrastructure improvements. This new trail extends from St. Louis to Boise Avenues and provides limited access to the Big Thompson River. Another soft-surface trail connection will be constructed by volunteers on June 5 at a National Trails Day event. Sign up to help at offero.cityofloveland.org.

Learn more about City Open Lands

For more information on the City's Open Lands, including volunteer opportunities, free classes and more, visit www.lovgov.org/openlands or call 970-962-2727.

With Pulse and other construction projects, residents wonder “what is a locate?”

As Loveland residents embrace warmer weather and spring blooms, they will see “locates” - flags and paint marks - pop up in neighborhoods when construction occurs for any reason. The Pulse 100% fiber-optic network to deliver high-speed internet and voice service is now being installed in public-rights-of-ways (ROWs) and utility easements throughout the city. It is helpful to know what to expect during construction - including how to identify “locates.”

Before Pulse crews arrive for construction, residents will first receive a letter in the mail with information about the process, followed by a door hanger with construction reminders and education.

Then, locates (in the form of paint or flags) will be placed in ROWs. These indicators are an important part of the construction safety process and are required by the Colorado 811 one-call law. They allow Pulse crews to identify existing power, water, stormwater, natural gas, communications or other utility lines so they can avoid them during the construction process.

If residents see locate flags or paint markings please do not remove them - even to mow the lawn. Locate flags may be in place for up to 30 days and will be removed by crews directly when the project has been completed. If it seems like flags have been in place longer than 30 days, you can contact the Utility

Notification Center of Colorado, and they can tell you if they’re safe to remove: 800-922-1987.

Pulse is in year two of a four-year construction process. Construction information is available at www.LovelandPulse.com/PulseInProgress.



Trash carts whose lids won’t close will not be emptied by collection crews

Trash carts that are overfilled, preventing the lid from closing completely, are not collected by city trash hauling crews. Customers can contact Solid Waste to learn how to decrease materials going into their trash carts or to order a larger cart at 962-2529, or go to www.cityofloveland.org/solidwaste. Customers should make sure they’re not throwing away items that can be recycled such as paperboard, cardboard and certain plastics and cans. For occasional overflow customers can affix a City trash stamp to additional bagged trash.



OPEN LANDS ACTIVITIES - MAY

2, 3, 8, 9 Interpretive Guide Training

FREE!

5, 15, 19, 29 Native Garden Weeding

11, 20 Weed Warriors

12 Guided Wildflower Walk

12, 26 Nature Cabin Open House

15 Guided Bird Walk

19, 22 Guided Water History Walk

20 PEEPs Preschool Activity

21 Nature Journaling

27 Critter Scene Investigation Training

28, 29 Volunteer Trail Host Training

29 Critter Scene Investigation Program

INFO | REGISTER: offero.cityofloveland.org

YOUTH

Baseball
Basketball
CARA Track
Gymnastics
Soccer
Softball
T-ball

SUMMER REGISTRATION

ADULT

Cornhole
Soccer
Softball
Spikeball
Volleyball

REGISTRATION: lovgov.org/webtrac

ATHLETICS INFO: teamsideline.com/loveland



Loveland Public Library

Stay up-to-date with Library events and news updates by signing up for website email notifications!

lovlib.org/staynotified

City Update is a monthly publication of the City of Loveland. City Update is also available on the City’s website at www.lovgov.org. Your comments are welcome. Please call (970) 962-2556, or email oce@cityofloveland.org. The City of Loveland is committed to providing equal opportunity and does not discriminate on the basis of disability, race, color, national origin, religion, sexual orientation or gender. The City will make reasonable accommodations for citizens in accordance with the ADA. For more information, please call (970) 962-3319.



GREENSWITCH

Whether you're a resident, small business or large corporation, all City of Loveland electric customers can make the switch to clean, renewable energy! When you make the switch, you are supporting an alternative to fossil fuels.



PRICE REDUCED!
~~\$2.80~~-\$1.20 per 100 kWh block
New price has been automatically applied to existing GreenSwitch subscribers


FREQUENTLY ASKED QUESTIONS

- How will I be billed?** For each block of GreenSwitch energy that you purchase, \$1.20 will be added to your regular monthly utility bill.
- How many blocks should I purchase?** GreenSwitch is sold in 100 kilowatt-hour (kWh) blocks. You can purchase as many GreenSwitch energy blocks as you like. If you would like to purchase enough blocks to cover your household's usage:
1. Add up the amount of electricity you used in the past 12 months and divide by 12. (Let's say you used 8,625 kWh last year, divide by 12 and your monthly average would be 718 kWh.)
 2. Divide the monthly average by 100 (the number of kWh per GreenSwitch block) to determine how many blocks of renewable energy you would purchase. (If you used an average of 718 kWh per month, you could purchase 7 blocks of GreenSwitch energy to cover your usage. 7 blocks of GreenSwitch would add \$8.40 to your monthly bill.)
- How much electricity does the average home in Loveland use?** According to the LWP annual fact sheet, the average Loveland home uses 669 kWh of electricity per month. A home using 669 kWh per month could round their usage up or down and spend an additional \$7.20 per month for six blocks or \$8.40 per month for seven blocks of GreenSwitch renewable energy.
- Where does our energy come from?** LWP purchases clean energy from our wholesale energy provider, Platte River Power Authority. Loveland's GreenSwitch renewable energy is 100% wind power. This mix can change from year to year. The 2020 and 2021 product content labels list the content mixes for Loveland's renewable electricity last year and the prospective content mix for this year.
- How do I sign up?** To join GreenSwitch call 970-962-2111 or go to lovelandwaterandpower.org/GreenSwitch

PRODUCT CONTENT LABEL¹

GreenSwitch is sold in blocks of 100 kilowatt-hours (kWh). This table provides the renewable resource mix in GreenSwitch in 2020 as well as the projected resource mix in 2021.

GREEN-E ENERGY ELIGIBLE NEW ² RENEWABLES IN GREENSWITCH				
	2020 - Historic		2021 - Prospective	
	%	Generation Location	%	Generation Location
WIND	100%	Colorado and Wyoming	100%	Colorado and/or Wyoming

1. Prospective 2021 figures reflect the renewables that we have contracted to provide. Actual figures may vary according to resource availability. We will annually report to you before August 1 of next year in the form of a Historic Product Content Label the actual resource mix of the electricity you purchased. Historic 2020 figures reflect the power delivered to GreenSwitch customers in 2020.
 2. New Renewables come from generation facilities that first began commercial operation within the past 17 years.
- For comparison, the current average mix of resources supplying Loveland Non-Renewable Subscribers includes: Coal (43.1%), Natural Gas (0.4%), Hydroelectric (18.9%), Renewables (22.7%), and Other (15%)*. This resource mix was provided to Loveland by Platte River Power Authority for the year 2020.
- The average home in the United States uses 877 kWh per month. [Source: U.S. EIA, 2019]
- For specific information about this electricity product, please contact Loveland Water and Power, 970-962-3000, lovelandwaterandpower.org/GreenSwitch.
- *Other refers to unspecified purchases.
- 

Energy
CERTIFIED
- GreenSwitch is Green-e Energy certified, and meets the environmental and consumer-protection standards set forth by the nonprofit Center for Resource Solutions. Learn more at www.green-e.org.*

UTILITY NEWS



MAIN SWITCHBOARD
970-962-3000

UTILITY BILLING
970-962-2111



visit us online...

lovelandwaterandpower.org

Take Control of High Utility Bills With a **FREE Home Efficiency Assessment!**



Sign up for a **FREE** home efficiency assessment through Larimer County Conservation Corps today!

During the assessment, a team of Corps members will:

- ☒ Conduct an inspection of your home's insulation, appliances, windows, toilets and heating/cooling system.
- ☒ Install efficiency measures based on your home's needs including, LED light bulbs, water-efficient showerheads, smart thermostats and high-efficiency toilets.
- ☒ Educate you about water and energy efficiency practices and services.

visit larimerworkforce.org/energy or call 970-498-6660



LARIMER COUNTY
**CONSERVATION
CORPS**

This limited-time offer is only available January through May.

**Must be a Loveland Water and Power utility customer to qualify.*

200 WEST OAK STREET, SUITE 5000 | FORT COLLINS, CO 80521

2020 FIRE HYDRANT



FLUSHING SCHEDULE

Hydrant flushing keeps the interior of pipes clean, maintains excellent water quality and ensures hydrants are operating properly. **Flushing can cause brief water discoloration.** Although it is not recommended for laundry use due to possible staining of clothes, LWP water still meets or exceeds all state and federal standards of the Safe Drinking Water Act.

DATES MAY VARY DUE TO WEATHER.
Visit lovelandwaterandpower.org for more information.

FLUSHING WILL START ON THE WEST SIDE OF LOVELAND AND WORK EASTWARD.

APRIL 19-23 NORTHWEST SECTION

North of Hwy. 34 and west of Colorado Ave.

APRIL 26- APRIL 30 SOUTHWEST SECTION

South of Hwy. 34 and west of Colorado Ave.

MAY 3-7 NORTHEAST SECTION

North of Hwy. 34 and east of Colorado Ave.

MAY 10-14 SOUTHEAST SECTION

South of Hwy. 34 and east of Colorado Ave.

MAY 17-21 EAST SECTION

Denver Ave. east to Centerra

QUESTIONS? 970.962.3720

Garden In A Box

\$25 OFF

Limited discounts
for LWP Water
Customers

Low-water gardens made for Colorado yards



WATER
WISE
PLANTS



PLANT BY
NUMBER
MAPS



PRO
DESIGNS
FOR LESS

ResourceCentral.org/Gardens • 303-999-3820 x222

RESOURCE
central