

Loveland Fire Rescue Authority's new western outpost



Artist rendition by Fort Collins architecture firm Belford Watkins Group shows LFRA's Fire Station 7 as it will appear next to Big Thompson Elementary School on Larimer County Road 27, just outside Loveland's city limits in unincorporated Larimer County and within the growing Wildland Urban Interface.

Fire Station No. 7 will cut response times, insurance rates for 'WUI' residents

Loveland Fire Rescue Authority for many years has targeted Loveland's western edge as the chosen location for its seventh station.

The site that LFRA found is on County Road 27, just north of U.S. 34, adjacent to Big Thompson Elementary School, and squarely within the WUI – or “woo-eee,” as firefighters pronounce it. The Wildland Urban Interface, a zone where new developments and wildlands meet and overlap, is the very reason Station No. 7 will open there in February.

The WUI in Colorado will grow to more than 2.2 million acres by 2030, according to Colorado State Forest Service projections. Much of the increase will happen along the North Front Range, from metro Denver northward to Fort Collins.

Emphasis on fire protection within the zone was one of the drivers behind formation of the Loveland Fire

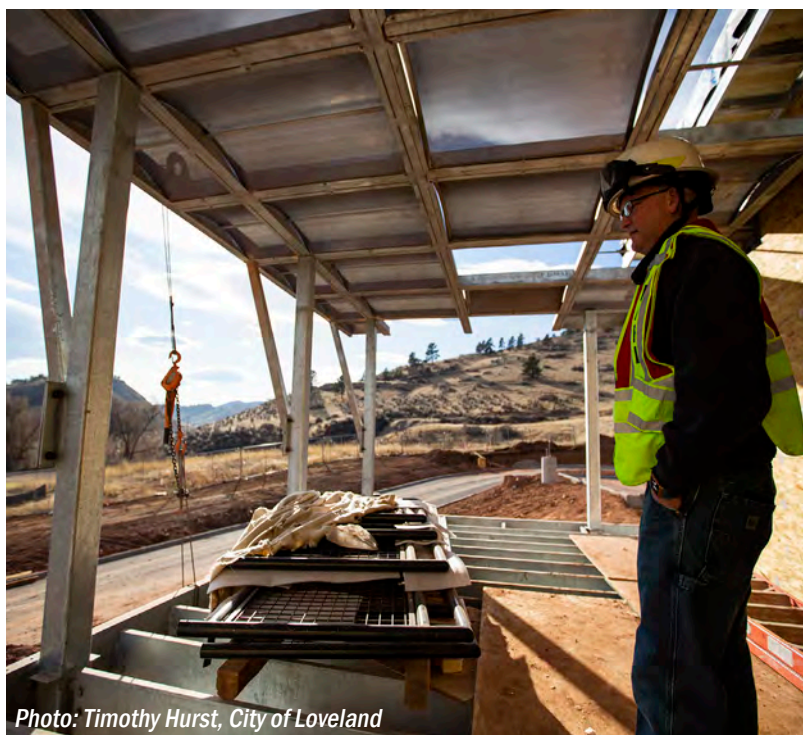


Photo: Timothy Hurst, City of Loveland

Division Chief Michael Cerovski, Fire Station 7's project manager, stands in the station with foothill ridges west of Loveland as a backdrop.

STATION 7 (from page 1)

Rescue Authority in 2012, unifying the city department and the Loveland Rural Fire Protection District as a single entity, spanning urban Loveland and wildlands beyond.

“Number 7 will be a station that serves Loveland, but also fills that void for the Rural,” LFRA Chief Mark Miller said. “It bridges a gap. We’re all neighbors, and anytime there is a big wildfire within the Loveland community it affects all of us.”

When Patti Watkins and her colleagues at Belford Watkins Group architects visited the site to scope the project, the rugged landscape behind it caught her attention. “When we first went out there, our favorite views were toward the ridges to the west,” she said. “That’s why the roof looks like it does. That monoplane was an efficient, cost-effective way to build.”

It also makes Loveland Fire Rescue Authority’s Station 7 fit its surroundings in an uncommon way, with the roofline and ridgeline matching. While that’s no accident, neither are any of the other features that make No. 7 unlike any fire station in Northern Colorado.

An outdoor plaza with a fire pit, accessed in good weather through an overhead door on the east side of a training room, is another example. The door that opens an entire wall of the new station serves as an invitation to the community.

“When you think about it, that’s the style now,” said LFRA Division Chief Michael Cerovski, the agency’s project manager for No. 7. “When you go to Whole Foods, or some other space that has community rooms, and you see those overhead doors. It is a way to maximize the space.”

Cerovski said he imagines use by a homeowners’ association, road maintenance cooperatives or parent groups that would like having meeting space adjacent to the school. Miller says that the station will have a role to play as an



Construction on Station No. 7 is progressing toward an expected opening date on Valentine’s Day, 2020.

educational venue for WUI residents, as well.

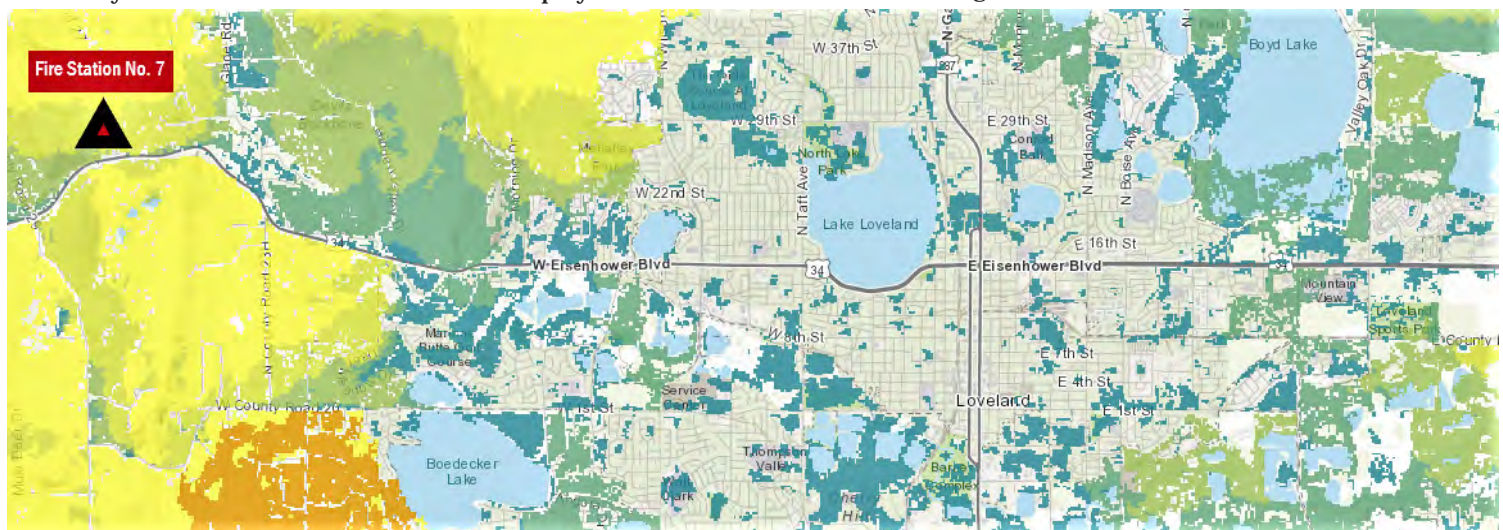
“I can see where we might have community meetings a few times a year,” Miller said. “We can bring people together to talk about living in this zone, and some of the strategies that are available to reduce its risks.”

Cerovski, in guiding a tour of the station while construction workers swarmed throughout the site, pointed out how windows in every room of the station allow views of what he calls the station’s “heartbeat,” the three apparatus bays where specialized wildland firefighting vehicles and equipment will be housed.

“As we move around and through this space, you will see that anywhere you are in the station gives you a view of that heartbeat,” Cerovski said.

That includes the three-story tower that Patti Watkins said was intended to evoke an image of the old-fashioned U.S. Forest Service fire towers, where rangers with binoculars scanned the horizons for smoke.

Cerovski said the tower is purposeful, rather than just an architectural frill. It will be used for training purposes, with its 35-foot vertical space available for training in rappelling, or in handling hoses that would have to be hauled to upper floors of a building.



A Colorado State Forest Service map shows the location of the new station within the Wildland Urban Interface (WUI), shaded yellow and orange, where the combination of new residential developments and high fire risk pose challenges for the Loveland Fire Rescue Authority in its fire protection mission.

Pulse in progress - network construction underway

Fall has been a busy time for Pulse, the City's communications utility that is connecting the Loveland community by offering affordable, reliable and fast internet and voice service through a 100% fiber-optic network.

Pulse was approved by city council in November 2018 to ensure that all residents and businesses across the city had access to affordable, reliable, fast internet service that provides the same high level of customer service available to residents today.

On Nov. 13, City staff, elected officials, contractors and community members broke ground to launch construction efforts that will bring the Pulse network in front of every home and business in the city over the next three to four years.

WHAT'S IN A NETWORK

The Pulse network will have three parts: the core network, distribution network, and customer connections. The core network and telecommunications huts installed in Loveland are what connect the City to telecommunications hubs across the U.S. The distribution



network is the fiber that needs to be installed across the city. Customer connections are the last piece, connecting homes and businesses to the rest of the network. They are only installed when a customer subscribes to service.

The first Pulse telecommunications equipment hut was installed at the Loveland Water and Power Service Center Oct. 31 and the remaining four huts will be installed across the city before the end of the year.

CONSTRUCTION CONTRACTORS SELECTED

Pulse has selected Fort Collins-based Colorado Boring as its construction contractor and is proud to work with this experienced local business.

"Colorado Boring adds exceptional value to our team at a significant time for Pulse, bringing knowledge of and a commitment to our community as well as professionalism and expertise that our will drive this project forward," said Briana Reed-Harmel, municipal fiber manager for the City of Loveland.

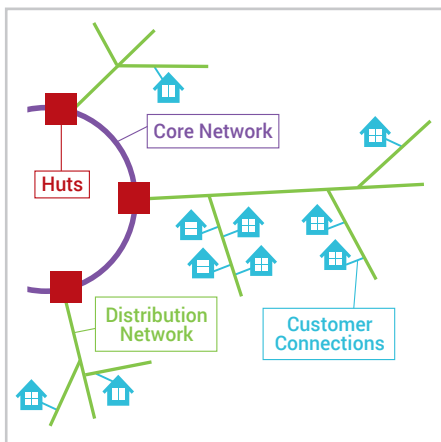
Colorado Boring, along with GE Construction and Backbone Fiber

Systems, LLC, will install Pulse's fiber-optic network throughout all public areas of the city. Construction crews will have Pulse signage on their vehicles to help residents know who is in their area.

WHAT TO EXPECT MOVING FORWARD

Construction resources are available at **LovelandPulse.com**. Public construction and service maps will not be available as that information can be misused by competing internet service providers in the area.

Service information is expected to be announced in the first half of 2020. Fill out the early interest form at LovelandPulse.com to receive information about service when it is available in your area.



CONNECT WITH US

Here is how you can reach us, sign up for future updates and get the information you want to know.

Email: Pulse@cityofloveland.org

Phone: 970-962-2010

WEB: LovelandPulse.com

Facebook: @LovelandPulseCO

Instagram: @LovelandPulse

Twitter: @LovelandPulse

YouTube: @LovelandPulse



LEVEL 5
rating with the
Colorado Shines
Program!

OPEN HOUSE

Thursday, January 23, 4-5P

Chilson Recreation Center
700 E. Fourth St., Loveland

**OPEN ENROLLMENT FOR FALL 2020
BEGINS MONDAY, FEBRUARY 3.**

Registration is not available online.

Questions? 970.962.2467
cityofloveland.org/smallfries

Job Search Assistance Open Hours

Receive assistance using
technology for job searching!



Applying for jobs online
Accessing job boards
Pre-employment
assessments
Job-search emails
Application accounts
Uploading documents
And more!



January

Fri. 1/10
10-11:30am

Wed. 1/22
3:30-5pm

**Loveland
Public Library
iLearn Classroom**



SATURDAY, FEBRUARY 1, 2020

RIALTO THEATER • 228 E. FOURTH ST. • LOVELAND
Presented by City of Loveland Parks & Recreation

2:00 PM Matinee • \$15 7:00 PM Evening • \$19

Tickets at rialtotheatercenter.org



winter wonderlights
LOVELAND CHAPUNGU SCULPTURE PARK
November 15 - January 1



**Free Nightly Light Show, Weekend
Activities Including Live Reindeer
and Santa, Entertainment and more!**

*Select Weekends Only - See Website

www.WinterWonderlightsLoveland.com

it's your fault but i'm sorry
**SHE BENDS
WOMEN IN NEON**

JANUARY 25 - APRIL 12

LOVELAND MUSEUM
Admission: \$7

503 N. Lincoln Ave.
Loveland, CO 80537
(970) 962-2410

www.lovelandmuseumgallery.org



RIALTO PRESENTS



TICKETS ON SALE NOW!

CLASSIC ALBUMS LIVE **JAN**
TOM PETTY **24**
AND THE HEARTBREAKERS **7:30 PM**

RIALTO THEATER CENTER
228 East Fourth Street • Loveland, CO 80537
(970) 962-2120 • rialtotheatercenter.org

City Update is a monthly publication of the City of Loveland. Residents receive City Update according to their utility billing cycle. Timeliness of the information may be affected by recipients' billing schedule. City Update is also available around the first of every month on the City's website at www.cityofloveland.org. Your comments are welcome. Please call 962-2302, or email Tom.Hacker@CityofLoveland.org. The City of Loveland is committed to providing equal opportunity for citizens and does not discriminate on the basis of disability, race, color, national origin, religion, sexual orientation or gender. The City will make reasonable accommodations for citizens in accordance with the Americans with Disabilities Act. For more information, please contact the City's ADA Coordinator at 962-3319.

Follow us on
Facebook,
Twitter
and
YouTube



HAPPY HOLIDAYS FROM LOVELAND WATER AND POWER! UNWRAP SOME SAVINGS WITH LWP!



FREE
HOME EFFICIENCY
ASSESSMENT



**Through Larimer County
Conservation Corps!**

*Assessments will begin in
January 2020 but you can
get on the list now!*



**DOUBLE
REBATES!**



**For refrigerator and
freezer recycling!**



**REBATES
ON SELECT
APPLIANCE
MODELS!**



**through
Efficiency Works!**



**HOLIDAY
LIGHTING
ON SALE!**



**at the Efficiency
Works Store!**

Visit cityofloveland.org/Efficiency or call 970-962-3000 to learn more.

Want to continue the spirit of giving? Consider donating to our Help a Neighbor in Distress (HAND) Program. The HAND Program helps keep City water and electric services turned on for people facing a loss of utility service due to an unpaid City utility bill. Visit cityofloveland.org/HAND or call 970-962-2111 for more information or to donate to the program.



Platte River
Power Authority

Estes Park • Fort Collins • Longmont • Loveland

EV DRIVERS: SAVE UP TO \$200 ON A LEVEL 2 SMART CHARGER

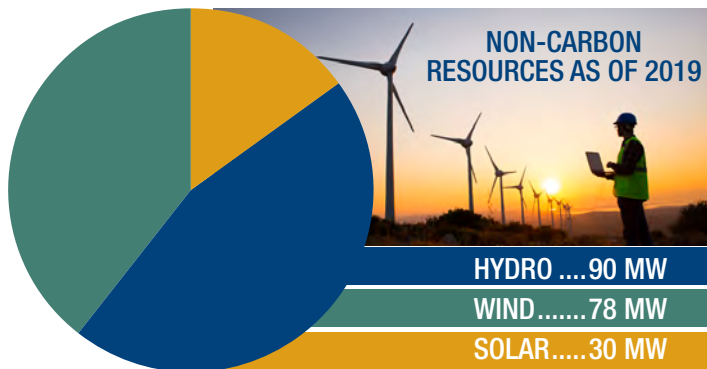
Platte River Power Authority is conducting an electric vehicle (EV) charging study to gather data on the charging patterns of EV drivers in the owner communities of Estes Park, Fort Collins, Longmont and Loveland. Data collected will be used to understand the effect of increased EV adoption on the distribution system and help inform Platte River's resource planning process. Participants in the study will receive a \$200 rebate on smart level 2 charging stations available on the Efficiency Works Store (efficiencyworksstore.com). A smart charging station enables users to schedule EV charging from a smartphone app or smart home device such as Amazon Alexa or Google Home.

VISIT PRPA.ORG/EV-STUDY
FOR DETAILED PARTICIPATION
REQUIREMENTS AND TO LEARN
MORE ABOUT THE STUDY



MAIN SWITCHBOARD visit us online...
970-962-3000 cityofloveland.org/LWP

UTILITY BILLING
970-962-2111



WINTER ENERGY EFFICIENCY TIPS

Temperatures are dropping but before you crank that thermostat, here are some tips to stay warm and festive without breaking the bank!



LET THE SUNSHINE IN

Open up the drapes during the day to take advantage of free heat from the sun. Make sure to close them back up at night to help insulate your home.



TURN DOWN THE HEAT

The Department of Energy recommends setting the thermostat to 68 degrees. Turning down the temperature when you're not home can save 5-20% on your bill.



ROCK YOUR WINTER WARDROBE

Embrace those cozy sweaters, fuzzy socks, and warm hats to make that lower temperature setting more comfortable.



CLEAN OR REPLACE YOUR FURNACE FILTER

Dirty filters restrict air flow, causing your furnace to work harder and use more energy.



BUY ENERGY-EFFICIENT HOLIDAY LIGHTING

LED light strings do more than just save energy and money. They last longer too. In fact, the same string of LED lights could be in use 40 holiday seasons from now! Plus, they're safer for your family because they don't get as hot and don't contain toxic mercury.

NON-CARBON RESOURCES

Platte River Power Authority – the wholesale electricity provider for Loveland, Longmont, Estes Park and Fort Collins – is currently conducting its resource planning process. While demand for alternative energy sources increases, it's important to remember that Platte River has long been a pioneer in the development of noncarbon energy in northern Colorado.

In 1998, Platte River became the first utility in the state to offer wind energy to its owner communities through a power purchase agreement with Medicine Bow Wind Project in Wyoming. Since then, Platte River has systematically added wind and solar capacity to its energy mix, including 30 MW of solar capacity at Rawhide Flats Solar in Wellington, while ensuring the safe, reliable, environmentally responsible and financially sustainable delivery of electricity and services to its owner communities.

In 2018, Platte River's board of directors passed a resource diversification policy calling for the pursuit of a 100% noncarbon energy mix by 2030. While several milestones must be achieved to attain this goal, including advancements in energy storage technology and participation in an organized regional market, Platte River has already made significant progress.

Approximately 30% of projected energy deliveries will come from noncarbon sources in 2019. By 2021, approximately 50% of energy delivered to the owner communities will come from noncarbon sources with the addition of 225 MW of wind capacity from the Roundhouse Renewable Energy Project, and 22 MW of solar plus 2 MW of battery storage capacity from the Rawhide Prairie Solar project. And Platte River is currently seeking proposals for up to 150 MW of additional solar generating capacity.

While Platte River is committed to achieving the goal of 100% noncarbon energy, help from Loveland residents and business owners is critical to making it a reality. Demand-side management continues to grow in importance as Platte River seeks to meet energy demand with greater amounts of intermittent resources. Platte River and its owner communities have united their efficiency offerings under one program called Efficiency Works™. To learn more about how you can conserve and use energy more efficiently, visit efficiencyworks.org.