

## Other Area Fishing Locations

**Big Thompson Canyon Fishing** (Larimer County Areas: Glade, Narrows, Forks and Sleepy Hollow)

**Big Thompson Ponds** (Colorado Parks & Wildlife)

**Boedecker Reservoir** (Colorado Parks & Wildlife)

**Boyd Lake Avenue** (Colorado Parks & Wildlife)

**Carter Lake** (Larimer County)

**Flatiron Reservoir** (Larimer County)

**Horsetooth Reservoir** (Larimer County)

**Lon Hagler** (Colorado Parks & Wildlife)

**Pinewood Reservoir** (Larimer County)

**Simpson Ponds** (Colorado Parks & Wildlife)

**Viestenz-Smith Mountain Park** (City of Loveland) (open April-October) – Big Thompson River access through the park



Fishing is regulated by Colorado State Regulations. Site-specific regulations apply. All persons age 16 and older are required to have a Colorado Fishing License. **For fishing regulations by site, visit [cpw.state.co.us/documents/rulesregs/brochure/fishing](http://cpw.state.co.us/documents/rulesregs/brochure/fishing)**

City of Loveland  
Parks & Recreation Department

500 E. Third St., Suite 200  
Loveland, CO 80537  
970.962.2727 • [cityofloveland.org/parks](http://cityofloveland.org/parks)



# Public Fishing Locations

## Loveland, CO



For the latest fishing report, visit the Colorado Parks & Wildlife's website: [cpw.state.co.us/things/todo/pages/fishingreports.aspx](http://cpw.state.co.us/things/todo/pages/fishingreports.aspx) or call 303.291.7531 for a stocking report.



# CITY OF LOVELAND

## Public Fishing Locations



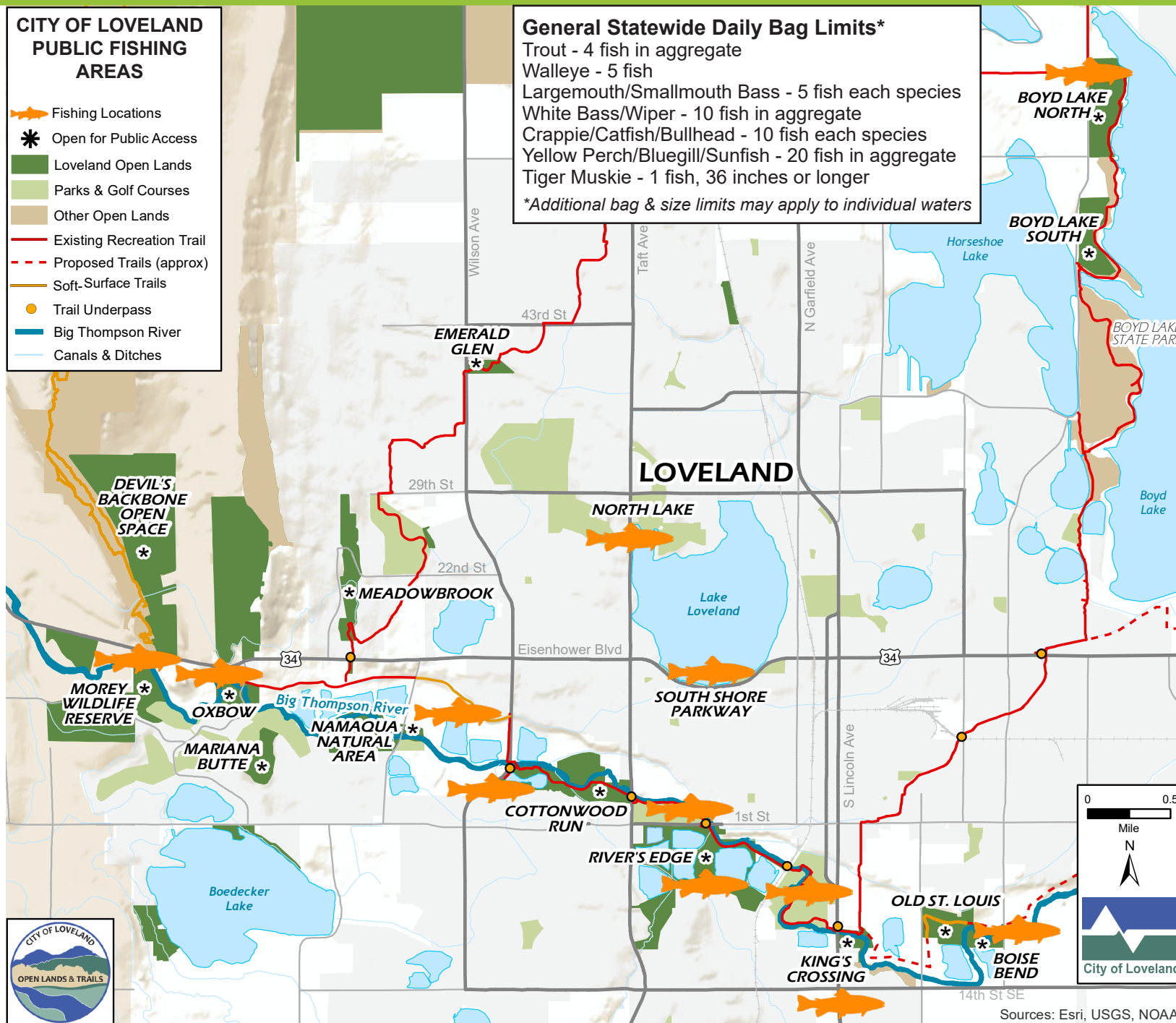
### CITY OF LOVELAND PUBLIC FISHING AREAS

- Fishing Locations
- Open for Public Access
- Loveland Open Lands
- Parks & Golf Courses
- Other Open Lands
- Existing Recreation Trail
- Proposed Trails (approx)
- Soft-Surface Trails
- Trail Underpass
- Big Thompson River
- Canals & Ditches

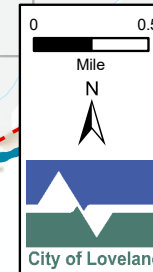
### General Statewide Daily Bag Limits\*

Trout - 4 fish in aggregate  
 Walleye - 5 fish  
 Largemouth/Smallmouth Bass - 5 fish each species  
 White Bass/Wiper - 10 fish in aggregate  
 Crappie/Catfish/Bullhead - 10 fish each species  
 Yellow Perch/Bluegill/Sunfish - 20 fish in aggregate  
 Tiger Muskie - 1 fish, 36 inches or longer

\*Additional bag & size limits may apply to individual waters



- **Big Thompson River**  
 From Wilson Ave. to US Hwy 287  
 (Big Thompson River access from Cottonwood Run Natural Area, Centennial Park, River's Edge Natural Area, Fairgrounds and Barnes Parks and King's Crossing Natural Area)
- **Boise Bend**  
 1225 S. Boise Ave. (river fishing)
- **Boyd Lake State Park**  
 3720 N. Cty. Rd. 11C (lake fishing)
- **Lake Loveland/South Shore Scenic Parkway**  
 499 W. Eisenhower Blvd.  
 (south shore, Lake Loveland)
- **Loveland Recycling Center Pond** 400 N. Wilson Ave.  
 (Wilson Ave. and Big Thompson River)
- **Morey Wildlife Reserve**  
 5439 Cedar Valley Dr.  
 (small section on Big Thompson River at north end)
- **Namaqua Park/Natural Area**  
 816 N. Namaqua Ave.  
 (Big Thompson River access along park and open lands boundaries)
- **North Lake Park**  
 2626 N. Taft Ave.  
 (pond and Lake Loveland fishing)
- **Oxbow Natural Area**  
 1135 Rossum Dr. (river access)
- **River's Edge Natural Area**  
 960 W. 1st St. (5 ponds)



Sources: Esri, USGS, NOAA