

The Foundry prepares to go public



The Foundry's public plaza, flanked by apartment buildings, retail and restaurant space and a new seven-screen movie theater, will be the center of downtown Loveland activity beginning with special events in May 2019. The plaza is shown here under construction in late April.

Of Loveland's nearly 80,000 residents, only about 250 or so have been able to keep tabs on daily progress at The Foundry, the sweeping, two-city-block redevelopment project that transforms downtown.

They live there, in the Patina Flats apartments taking up two buildings on Lincoln and Cleveland Avenues. They have watched from their terraces for months as construction workers and equipment have swarmed throughout the project site, closing in on an opening date for the public plaza that will become their playground.

"It's becoming easier every day to guess what it will look like when some big event is happening, and it's all full of people, and music is playing," said Jon Howell, who has been watching from the upper-floor terrace of the apartment he shares with his fiancé. "A few people have asked if we're worried about the noise. We're not. Not a bit. It's just the sort of sound this city needs."

Roomful of Blues

Beginning in late May, Howell and his Patina Flats



A multi-story splash of color comes to downtown in June when Florida artist known by the one-word name Daas will paint his mural "My Favorite Things" on the east and south faces of The Foundry's parking garage.

neighbors will be joined by hundreds of other Loveland residents who will take in the sights, sounds and tastes of The Foundry. A blues concert and barbecue fest on May 31 will fill the project's "living room," as project architect Eduardo Illanes of Boulder-based Oz Architecture calls the plaza. Thereafter, a set of domino-style grand openings will usher in The Foundry's keystone components.

The 102-room TownePlace Suites by Marriott, taking the space between Lincoln and Cleveland Avenues just north of First Street, will greet guests in early July. The seven-screen, 525-seat MetroLux Dine-In theater will screen a slate of first-run movies about the same time.

The Foundry's developer, builder and principal owner – Fort Collins-based Brinkman – is negotiating leases for restaurant and retail space that take up the first floors of the Lincoln and Cleveland buildings that have the Patina Flats apartments above.

In late May and early June, a Florida artist commissioned under the City's "1-percent-for-the-arts" public art finance commitment will scale the four-story walls of The Foundry's multi-level public parking garage to paint a mural titled "My Favorite Things."

The grand-scale mural will depict only-in-Loveland scenes – a girl painting a trademark heart on the east wall, and a Devil's Backbone-inspired landscape on the south wall.

A walk around the plaza in late April, as construction was still underway, showed how the project has drawn the community into its heart. Sculptures, monuments and even a clock tower carry messages from donors.

A bronze sculpture of two larger-than-life figures scaling a sandstone block, titled "Reaching Our Goal" by sculptor Denny Haskew, is prominently placed, stage-left, on the plaza – a donation of the Thompson Valley Rotary Club.

Three contract workers aided by a heavy-duty forklift carefully lowered a dark granite façade onto a concrete foundation, forming the base for the plaza clock donated by the Loveland Rotary Club.

On warm summer days and nights, the plaza's Western-themed fire pits and a splash pad with lighted, pop-up fountains will add whimsical touches to the venue.

The Loveland Downtown Partnership and Downtown Development Authority, with an annual commitment of \$50,000 from the Community Foundation of Northern Colorado, will arrange event programming for the plaza.

"The term 'game-changer' gets thrown around a lot these days," Loveland Economic Development Manager Mike Scholl said. "That isn't sufficient to describe what this project does for Loveland. After more than a decade of planning – and some terrific collaboration between the City, private partners and the community – The Foundry's reach extends far beyond downtown. This really transforms our city."

Follow the Foundry online

Events and openings at The Foundry will happen fast beginning this month. To keep track, follow:

- Brinkman's project-specific website at www.TheFoundryLoveland.com
- The Loveland Downtown Partnership website at www.lovelandpartnership.org



"Reaching Our Goal," a bronze by Loveland sculptor Denny Haskew, occupies a prime plaza spot at The Foundry.



A black granite shell, covering the concrete base for a clock tower donated by the Loveland Rotary Club, is lowered into place. The MetroLux Dine-In theater is under construction in the background.

Celebrate bicycles and all things biking during the entire month of June

Shift gears and pedal into June on your bike! Whether you ride to reduce stress, save money on gas, burn calories, enjoy the scenery or just avoid the traffic congestion, pump those pedals!

Bike Month celebrates the unique power of the bicycle and the many reasons we ride.

Need some ideas? Loveland Bike Month is jam packed with events that celebrate bicycling.



New this year:

- By Bike Guided Rides to local breweries.
- Family Glow & Go Ride at Fairgrounds Park.
- Expanded AM and PM Bike to Work Day stations to support people on bikes across the community.
- Ride your bike to *Night on the Town* – experience “more cowbell” and be celebrated for your mode of choice.

Other event opportunities include:

- Blackout Bicycle Bingo – June 1 through July 30.
- 8-week Bike to Work Challenge for workplace-based teams in Northern Colorado
- Bike Month in Posters, Museum exhibit
- National Trails Day Build Project at Willow Bend Natural Area

• Art By Bike Guided Tours



• Paint & Sip a bicycle-themed painting with Studio VINO@Verboten

• Basic Bike Maintenance at JAX Loveland

• 1st Friday at the Library with bicycle-related booths and information

• Downtown History and Architecture By Bike Guided Tour

• Bicycle-Friendly Driver Training at JAX Loveland

• Bike to Church Day

• Bike to Work Day

Go to: www.cityofloveland.org/bikeloveland for all the details.

Library invites students to celebrate space while avoiding the summer slide

The average student will lose up to one month of the instruction they received during the school year over summer break – a loss of academic progress known as the “summer slide.” But the Library’s Summer Reading Program can help students maintain their reading levels and make summer reading exciting and fun!

The year’s program kicks-off with a party for the whole family from 5:30 to 8 p.m., Friday, June 7 at the library. Attendees will enjoy Paizley Park, a Prince cover



band, plus a food truck and other activities. A separate teens-only party will take place from 4 to 5:30 p.m. on Monday, June 3.

Program participants can use the library’s interactive online platform where all ages can earn

points, collect virtual badges and play games. Pre-readers and kids receive a free book, space trading cards and the coveted yard sign.

Teens can earn coupons to local businesses, win technology prizes, and use library technology and maker programs, and adults can join in the fun with weekly space-themed movies plus the chance to win one of two Kindle Fires.

Sign up for the library’s Summer Reading Program at <http://loveland.readsquared.com> beginning May 20.

Fair warning: Dogs won’t go to court for ‘illegal deposits,’ but owners could

No one will issue a summons to a golden retriever, or a Pomeranian, or a Saint Bernard for making the usual sort of dog deposit in public or private areas.

Their owners? That’s another story.

A rising number of community complaints about dog poop in parks, on sidewalks and other spaces prompts this warning: Pick it up, or go to court.

The Loveland Municipal Code’s single-sentence provision

governing the issue could hardly be simpler: “It shall be unlawful for the owner or keeper of any animal to fail to remove any feces deposited by such animal on street, sidewalks, parks and recreation areas, and private property, or in any water immediately after the animal has deposited the fecal matter.”

Reasonable exemptions cover guide dogs for the blind, or other certified service dogs.

A summons for violation

does not carry the option of a mail-in fine, as some other minor infractions do. Owners in violation make mandatory court appearances, with \$1,000 fines in the balance.

The fix is simple. Pick it up.



RIALTO PRESENTS

MISSOULA
CHILDREN'S
THEATRE
A PRODUCTION OF MCT, INC.



Auditions: June 24, 10 am

THE SNOW
QUEEN JUN
29
3 & 5:30 PM

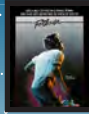
RIALTO THEATER CENTER

228 East Fourth Street • Loveland, CO 80537
(970) 962-2120 • rialtotheatercenter.org

MOVIES IN THE PARK

Movies are FREE* & begin at dusk - approx. 8:45pm.
You are welcome to bring a picnic (no alcohol glass).

At The Foundry Plaza | Downtown Loveland
NEW! Enjoy movies in this new gathering space.



Footloose
June 5



Dirty Dancing
June 12

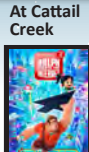


Grease
June 19

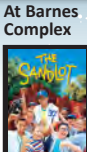


Movie - TBD
June 26

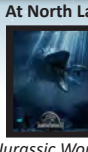
In the Park | Various Parks Come early to play at
the Mobile Recreation Trailer, 6:30-8:30P.



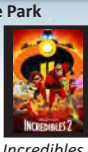
Ralph Breaks
the Internet
June 7



The
Sandlot
June 14



Jurassic World
June 21



Incredibles 2
July 12

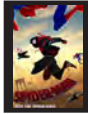
Dive-In Movie
at Winona Pool

Jaws July 27
Winona entry fee required

Weather permitting.
cityofloveland.org/parksrecreation



Apollo 11
July 19



Spider-Man:
Into the Spider-Verse
July 26

An Adventure in the Arts

June 14 - September 22



Chuck Close, Phil Manipulated, handmade pressed paper pulp, 1982. Courtesy of the Guild Hall Museum.

LOVELAND MUSEUM
LOVELAND ARTS AND CULT

503 N. Lincoln Avenue, Loveland, CO 80537
(970) 962-2410

www.lovelandmuseumgallery.org

IT'S NOT TOO LATE!

Loveland is still looking for

LIFEGUARDS and

SWIM INSTRUCTORS

for indoor & outdoor facilities.

Apply: cityofloveland.org/jobs



Open Lands Activities - June

- 6/1 National Trails Day Volunteer Project
- 6/14 Evening of Storytelling
- 6/15 Dog Day of Summer
- 6/29 Critter Scene Investigation (CSI)



Register & Info: offero.cityofloveland.org

YOUTH

Soccer
Basketball
Lacrosse
Gymnastics
Tennis
T-Ball, Baseball, Softball



**Stay active this
summer with
ATHLETICS!**

DETAILS <http://bit.ly/loveathletics>

REGISTRATION <http://bit.ly/registerathletics>

ADULT CORNHOLE



SIGN UP
TODAY!



Friday, June 7, 2019

Mariana Butte Golf Course

1:30pm Shotgun Start

\$230 per two-person team

18-hole round, cart, prizes, awards & dinner

Online registration now available!

This event is organized by the Loveland
Parks & Recreation Foundation. All proceeds
benefit youth recreation scholarships!

For more info, call Molly Elder at 970.962.2728

To register: cityofloveland.org/TeeOffForKids



City Update is a monthly publication of the City of Loveland. Residents receive City Update according to their utility billing cycle. Timeliness of the information may be affected by recipients' billing schedule. City Update is also available around the first of every month on the City's website at www.cityofloveland.org. Your comments are welcome. Please call 962-2302, or email Tom.Hacker@CityofLoveland.org. The City of Loveland is committed to providing equal opportunity for citizens and does not discriminate on the basis of disability, race, color, national origin, religion, sexual orientation or gender. The City will make reasonable accommodations for citizens in accordance with the Americans with Disabilities Act. For more information, please contact the City's ADA Coordinator at 962-3319.

Follow us on
Facebook,
Twitter
and
YouTube



2018: BY THE NUMBERS

DID YOU KNOW?

Loveland Water and Power (LWP) is a community-owned Non-Profit Utility. That means revenues are directly reinvested in the utility to maintain high quality services.

POWER

Electric Revenues

\$65,898,196

Electric Customers

37,186

Electric Employees

52.5

Current Service Area

74 SQ. miles

Overhead Pole Miles

102 miles

Underground Circuit Miles

536 miles

Substations

8

Streetlights

LED: 1077/ Non-LED: 5358

Foothills Solar Generation Capacity

3,500 kW DC

DID YOU KNOW?

LWP is a diamond-level Reliable Public Power Provider.

Diamond-level is the highest designation certified by the American Public Power Association—representing utilities that demonstrate high proficiency in reliability, safety, workforce development and system improvement.

Average Monthly Residential Electric Usage

669 kWh

Renewable Energy Program (Greenswitch)

5,500 MWh of Wind Power Purchased

Energy Saved via Energy Efficiency Programs

13,797 MWh

ENERGY CONSERVATION PROGRAMS

7

RP3 RELIABLE PUBLIC POWER PROVIDER

AMERICAN PUBLIC POWER ASSOCIATION

WATER

Water Revenues

\$16,982,369

Water Customers

26,710

Water Employees

90.3

Current Service Area

33 SQ. miles

Miles of Water Lines

463.39

Number of Hydrants

3,171

Number of Pump Stations

8

Treated Water Storage

20.3 MG

WATER CONSERVATION PROGRAMS

3

Average Monthly Residential Water Usage

8,449 GALLONS

Water Saved via Water Efficiency Programs

1,338,057 GALLONS

Water Treatment Plant Capacity

38 MILLION GALLONS PER DAY

DID YOU KNOW?

Roughly 50% of annual water usage is used for outside watering.

Water Treatment Plants must be able to handle a significant increase in water demand during the summer.

WASTEWATER

Wastewater Customers

35,064

Current Service Area

30 SQ. miles

Miles of Sewer Lines

353.16

Number of Manholes

8,917

Number Lift Stations

18

Wastewater Treatment Plant Hydraulic Capacity

10 MGD

UTILITY NEWS



MAIN SWITCHBOARD
970-962-3000

UTILITY BILLING
970-962-2111

visit us online...
cityofloveland.org/LWP



Much of the magic on this planet is contained in water. We all bear the responsibility to protect our precious water supply in Loveland. Proper sprinkler system care is a charge that allows Loveland homeowners to protect our drinking water in their own backyard.

BACKFLOW PREVENTION

WHAT IS BACKFLOW?

Consistent water pressure conveys clean water flow from the Water Treatment Plant through LWP's distribution system to your sprinkler system and onto your lawn. **"Backflow" refers to the flow of water from any source back into the public water system in the opposite direction of its intended flow.** Large-scale backflow occurs when water pressure changes dramatically, like when fire hydrants provide water to fight a fire nearby. The reverse flow of water could cause chemicals or contaminants to flow back into a home and contaminate the drinking water supply.

WHAT IS AN

"APPROVED BACKFLOW ASSEMBLY?"

The Colorado Water Quality Division identified approved backflow assemblies that assure effective backflow prevention methods. Assemblies must be ASSE or USC approved.

HOW CAN SPRINKLER SYSTEM OWNERS PREVENT BACKFLOW?

New Installations and Repairs: Permits are required for installing new sprinkler systems or if a system is repaired, expanded or modified. A sprinkler permit assures proper installation of the backflow assembly on a sprinkler system.

Current Sprinkler Systems: Sprinkler systems installed before regulations were developed, unapproved installations and simple wear-and-tear of backflow assemblies all pose serious risks to our drinking water. Commercial, multi-family and dedicated irrigation backflows are required by Colorado Law to have annual backflow prevention testing. Single-family homeowners are also encouraged to have backflow prevention assemblies tested annually. For a list of certified backflow prevention testers in Northern Colorado approved by the Backflow Prevention Education Council of Colorado, go to bpecc.us/find-a-tester.html.

Learn more about backflow prevention at cityofloveland.org/backflow



What's In My Water?

The Water Quality Report will be available on the City of Loveland's website by June 30th of this year.

cityofloveland.org/waterquality







Working on your sprinkler system?

Don't forget your Lawn Sprinkler Permit.

To obtain a permit or for more information visit:
www.cityofloveland.org/Backflow or call: (970) 962 3721

If you are planning to install a new sprinkler system, repair, expand or modify your present sprinkler system, you must meet the requirements of the Loveland Municipal Code and the Colorado Cross-Connection laws. Permits are free and required for all homeowners and contractors.

Property owners can perform normal maintenance activities on their sprinkler systems including replacing sprinkler heads or repairing a leak without obtaining a permit.