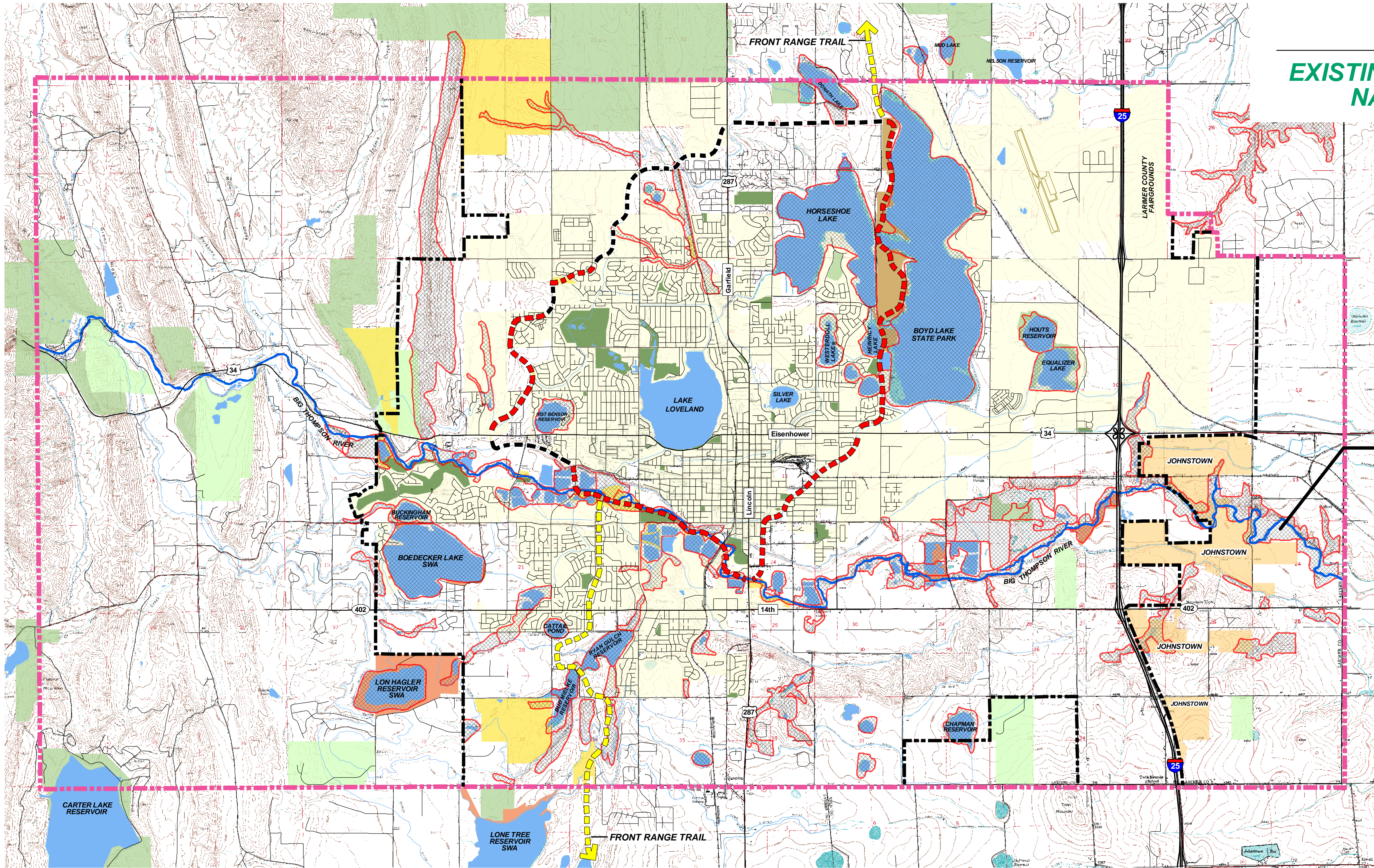


**EXISTING OPEN LANDS AND
NATURAL RESOURCES**

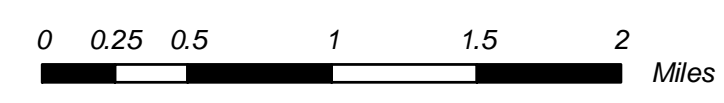


Note:
FOR DETAIL IN RIVER
CORRIDOR SEE OTHER MAPS.

Legend

- Loveland City Limits
- City of Loveland Open Lands
- Rural Land Use Plans
- Other Open Lands
- City of Loveland Parks & Golf Courses
- Johnstown City Limits
- Colorado State Parks
- State Wildlife Areas (SWA)
- Natural Areas
- Community Influence Area
- Growth Management Area
- Existing Recreation Trails
- Proposed Recreation Trails
- Proposed Partnership Trails

Proposed for construction by partnerships that may, depending on location, include the City of Loveland, Larimer County, Colorado State Parks, City of Fort Collins, Town of Berthoud, and developers, as part of future developments.



NOTE:
This map covers a large area, includes a great deal of information, and is intended only for general planning purposes. To ensure optimum readability, the width and location of some lines are exaggerated and schematic in location. For more precise information on City planning boundaries, City limits, proposed developments, existing public lands, roads, water features and similar information, please consult more detailed maps available from the City of Loveland.



1390 Lawrence St., Suite 100, Denver, CO 80204
dhm design
 corporation
 SITE DESIGN, LAND PLANNING
 & LANDSCAPE ARCHITECTURE
 PHONE 303-495-8900
 FAX 303-495-8988

