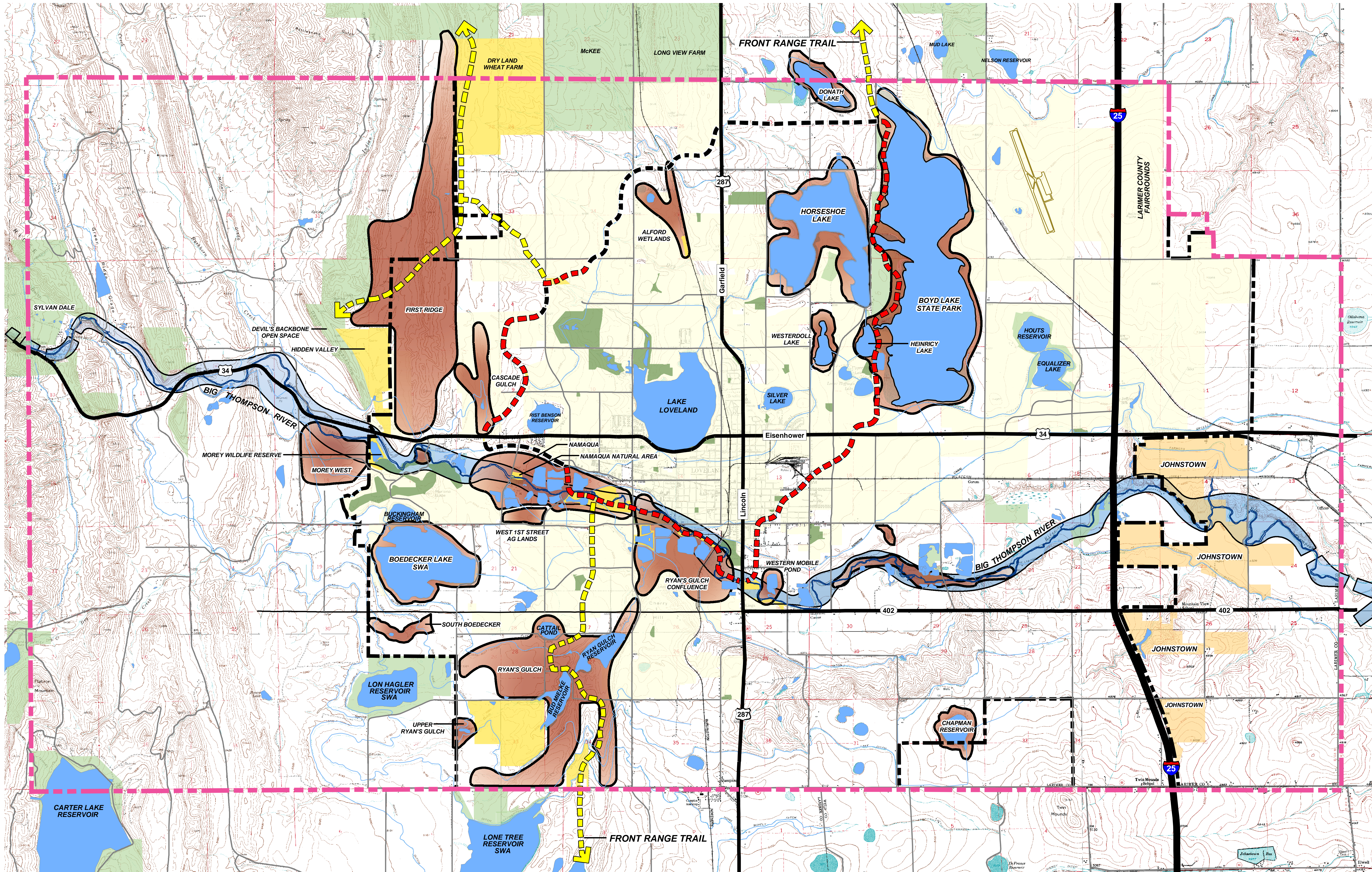


PRIORITY AREAS

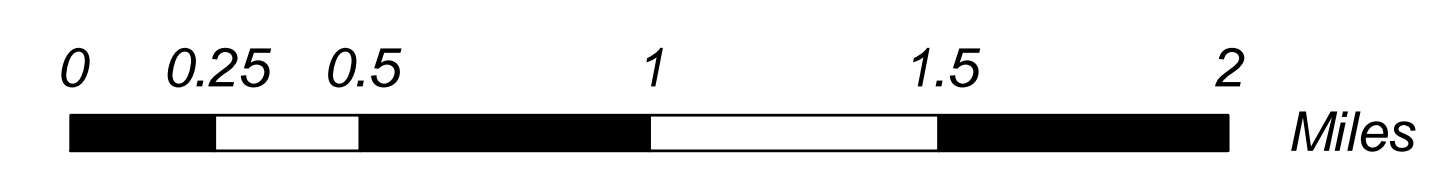


Legend

- BIG THOMPSON RIVER CORRIDOR**
Work with willing sellers and donors, and other entities, to protect important natural resource and viewshed values. Boundaries of illustrated corridor are schematic... precise limits to be determined on case-by-case basis.
- PROPOSED PROTECTION AREAS**
Work with willing sellers and donors, and other entities, within these general areas to protect specific parcels with important natural resource, agricultural and viewshed values. Boundaries of illustrated areas are schematic... precise limits to be determined on case-by-case basis.
- LOVELAND CITY LIMITS**
- CITY OF LOVELAND OPEN LANDS**
- OTHER OPEN LANDS**
- CITY OF LOVELAND PARKS & GOLF COURSES**
- JOHNSTOWN CITY LIMITS**
- EXISTING LOVELAND LOOP TRAIL**
Existing concrete trail built by Parks and Recreation Department.
- PROPOSED LOVELAND LOOP TRAIL**
Proposed extension of existing trail, to be built by Parks and Recreation Department.
- PROPOSED PARTNERSHIP TRAILS**
Proposed for construction by partnerships that may, depending on location, include the City of Loveland, Larimer County, Colorado State Parks, City of Fort Collins, Town of Berthoud, and developers, as part of future developments.
- COMMUNITY INFLUENCE AREA**
- GROWTH MANAGEMENT AREA**

NOTES:

- * This map reflects decisions made by the City of Loveland regarding areas that are important for open lands protection. These decisions were based on resource values and input from Loveland citizens.
- * The information shown on this map is schematic in nature and intended to illustrate general concepts. The boundaries of the Big Thompson River Corridor, Proposed Protection Areas, and Proposed Trails are only conceptually located. Precise locations will be determined on a case-by-case basis during negotiations with willing landowners.
- * Acquisition of property, or conservation easements, within the Proposed Protection Areas will only be accomplished with willing landowners, at fair market value, by donation, or as a result of the development review process.
- * The Proposed Protection Areas illustrate general locations within which land may be considered for protection.
- * Due to fiscal constraints and the fact that not all landowners will want to sell their land to the City, it is anticipated that only a portion of the land within most Proposed Protection Area "bubbles" will be protected as open lands.
- * This map covers a large area, includes a great deal of information, and is intended only for general planning purposes. To allow for optimum readability, the width of some lines is exaggerated and the location is general. For more precise information on City planning boundaries, City limits, proposed developments, existing public lands, roads, water features and similar information, please consult more detailed maps available from the City of Loveland.



MARCH 2003

1990 Lawrence St., Suite 100, Denver, CO 80204
d h m design
corporation
SITE DESIGN, LAND PLANNING
& LANDSCAPE ARCHITECTURE
PHONE 303-992-5566
FAX 303-992-4984

