

Viestenz-Smith Mountain Park

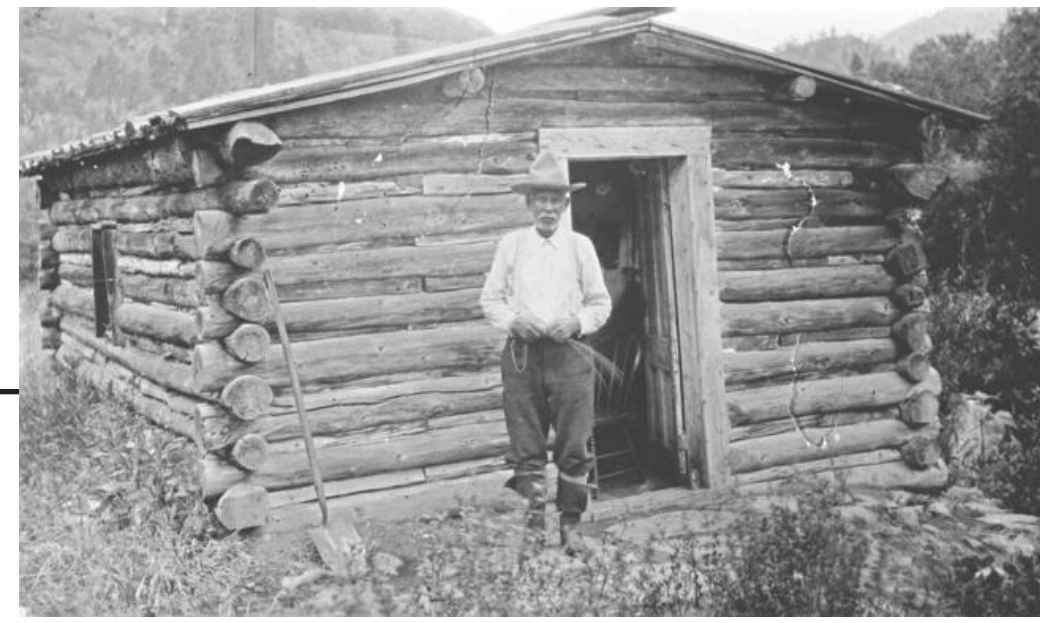
Grand Re-Opening | September 28, 2018



Park History

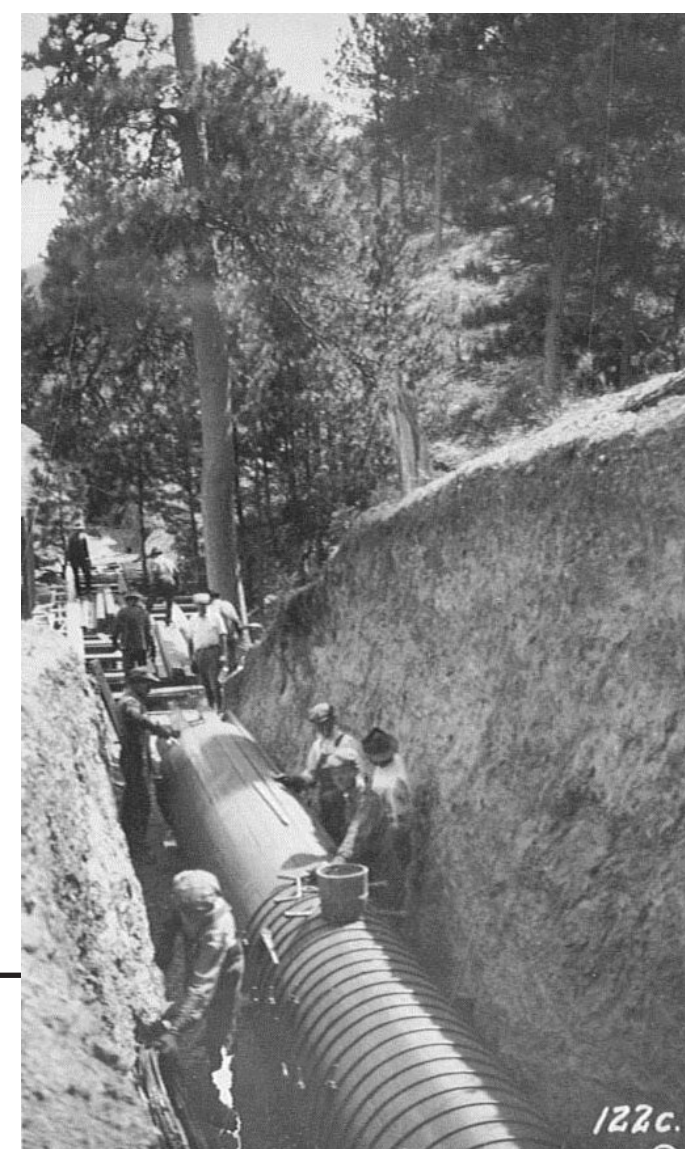
1914

Loveland City Council authorizes construction of a hydroelectric plant, and purchases land from Louis Papa, one of the original settlers of the Loveland area



1915

Loveland Light and Power Plant begins construction



1924

Construction of the Light and Power Plant resumes



1917

United States enters World War I and construction of the Light and Power Plant goes on pause due to material shortages



1925

Loveland Light and Power Plant opens



1926

Power plant site expands to become the Viestenz-Smith Mountain Park



1934

Civilian Conservation Corps (CCC) crews construct four buildings for the park



1976

Big Thompson River flood destroys hydroelectric dam, 1,700 feet of pipeline, bridge and parking lot

1978-1979

Reconstruction of park

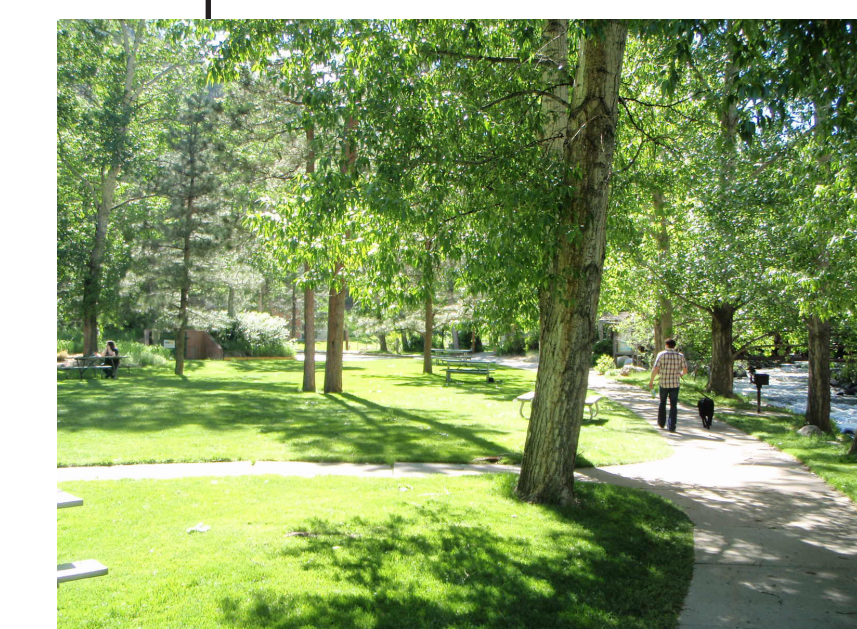


1979

Viestenz-Smith Mountain Park reopens

PRE 2013 FLOOD

Urban park character



2014-2018

Reconstruction of park



2013

Big Thompson River flood destroys bridge, parking lot, irrigation pond, irrigation pump, playground and CCC-era building



2018

Viestenz-Smith Mountain Park reopens

