



# Trails Day to-do list: Bike, hike, build



**The Oxbow Natural Area**, the City's newest, will host participants celebrating National Trails Day, June 2, with a morning menu of activities under the "Hike, Bike Build" slogan.

## Open space, trails take center stage for June 2 events

Within the panorama of Loveland's public open lands, the new Oxbow Natural Area is a tiny snapshot, its 20 acres representing less than 1 percent of City-owned land designated as natural areas.

A trail that leaves the small parking area on the west side of

Rossum Drive is a little longer than a city block, ending in a loop that fronts the Big Thompson where the river makes a big, sweeping bend in west Loveland. Thus, the name.

A bench and viewing area overlooking the river, an Eagle Scout project sponsored by the Loveland Parks & Recreation Department, affords views of the Front Range with the fairways of Mariana Butte Golf Course's "river holes" in the near foreground.

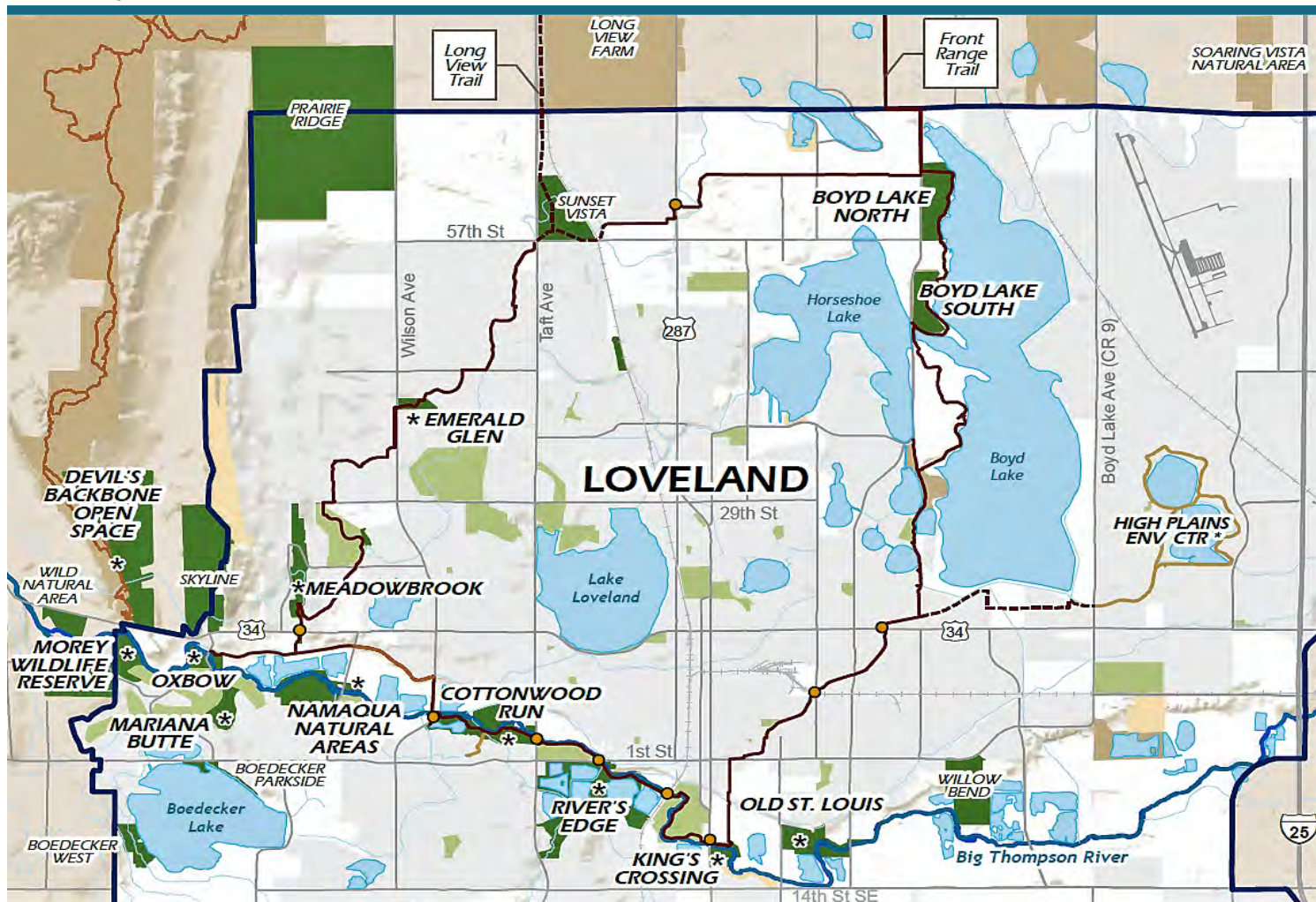
Modest Oxbow is a perfect example of how an opportunity-

driven strategy has led to expansion of public lands and trails in Loveland at a rate that has made the City a regional leader in setting aside open space even as it accommodates a tide of new development.

Public opinion surveys in recent years — including a statistically valid survey the City conducts annually — consistently show the City's natural areas and trails topping the list of amenities most valued by residents. That popularity likely will drive attendance to some of the events that Parks & Recreation has scheduled for

(see **Trails Day** page 2)





National Trails Day, June 2 (See box) centered on Oxbow.

The City's Trails Day tagline – "Hike, Bike, Build" – will guide that Saturday's activities. Participants can begin with a morning hike of the Mariana Butte Trail's new Hidden Hogback connector to the Oxbow Natural Area. Bicyclists can arrive via a new, concrete section of the Loveland Recreation Trail bridging the main trail to Oxbow.

The day's signature event will be the building of a trail loop of about two-thirds of a mile through the eastern side of the Oxbow Natural Area, opening it for public access for the first time.

The Big Thompson flows through the middle of Oxbow, and during the 2013 Flood laid down a broad swath of uprooted trees, pieces of destroyed homes, and other wreckage scoured from the

canyon upstream. While most of it has been carted away during the past four years, much still remained this spring.

## Celebrate Trails Day

Join the Loveland Parks & Recreation Department Open Lands and Trails Division June 2 for these National Trails Day events:

**8-9:30 a.m.:** Bird hike at Morey Wildlife Reserve, 5439 Cedar Valley Dr.

**9 a.m.-noon:** Join other volunteers in building Loveland's newest soft-surface trail at Oxbow's eastern section.

**9 a.m.-noon:** Info booths with interactive demos, giveaways, activities for all ages.

Information:  
[www.cityofloveland.org/nationaltrailsday](http://www.cityofloveland.org/nationaltrailsday)

"We've been moving tons of debris from that area," Loveland Open Lands Specialist Debbie Eley said.

Oxbow is the newest example of what the Open Lands Division classifies as "neighborhood" natural areas – small, close to where people live, affording a quick check-in with the natural world via a short walk or bike ride.

"A lot of our emphasis now is to make these opportunities available to people all over Loveland, no matter where they live," Eley said.

## Legend

- \* Open for Public Access
- Loveland Open Lands
- Parks & Golf Courses
- Other Open Lands
- Conservation Easements
- Existing Recreation Trail
- - - Proposed Trails (approx)

# The City again designates the entire month of June to all things biking

After a successful celebration last year, Loveland's bicycle riders can again participate in fun, encouraging and educational bicycle-related activities and events throughout the month of June.

The celebration kicks off with the Bike Month Challenge—a blackout bingo game that aims to increase the number of times people use their bikes in June.

Cover the squares on your bingo card by riding your bike for daily tasks, everyday errands and casual rides. Cut out this pocket-sized Bingo card to keep track of your progress.

While Bike Month events are open to people of all ages and riding abilities, many of this year's events are focused on riders who prefer low-stress routes.

When combined, the City's on-street bike lanes and the recreation trail generate a variety of options that support a high level of safety, comfort and connectivity for people on bikes.

June is a great time to explore and experience our community by bike, so hop on and get pedaling.

For more information and a complete listing of events, wheel over to [www.cityofloveland.org/BikeLoveland](http://www.cityofloveland.org/BikeLoveland).

## Bike Month Challenge Blackout BINGO! (6/1/18-6/29/18) I BIKED ...

To a town event	On a local street	To a bike tune-up	Fill in the blank!	To the grocery store
To church	To a historic building	To a friend's house	To public art	To dessert
To the rec center	To work or school	FREE SPACE	To the library	On the rec trail
To the museum	To a park or open space	To the Rialto	On a soft surface trail	To a meal
With a friend	On an on-street bike lane	To the post office	To a relative's house	To the pool or lake

# 2018 Loveland Summer Concert series has something for everyone

The 2018 Loveland Summer Concerts - formerly the Foote Lagoon Summer Concert Series - presented by Kaiser Permanente, kicks off at 6:30 p.m. on Thursday, June 21 with folk singer Patty Larkin, at the Foote Lagoon amphitheater, 500 E. Third St.

Every Thursday evening between June 21 and July 26, attendees will enjoy a variety of amazing musical entertainment by regional and nationally touring artists, plus fun kids' activities. All concerts are family-friendly, fun and free.

Kids activities begin at 6:30 p.m.



## Summer line-up:

- June 21 – Patty Larkin - Folk
- June 28 – Ryan Shupe & The Rubberband - Bluegrass & Country
- July 5 – FACE Vocal Band -A capella Rock
- July 12 – Narrow Gauge - Country & Classic Rock
- July 19 – Rusty 44 Band - Americana & Bluegrass
- July 26 – Jarabe Mexicano - Traditional & Popular Latin

This annual concert series is organized by the Rialto Theater and has become a tradition for many Northern Colorado residents.

Details: [rialtotheatercenter.org](http://rialtotheatercenter.org).

# Library's Summer Reading Program provides fun and keeps skills fresh

We think libraries rock and that is the theme of the Loveland Public Library's summer reading program.

The library's summer reading program helps kids (and grownups) stay in rock 'n' roll reading shape.

The program kick-off goes from 5:30 to 8 p.m. on Friday, June 1, and is a family-friendly party featuring the sounds of Hunk-Ta-Bunk-Ta and The Stanleytones Bluegrass Band, plus food and lots of activities. Teens can rock 'n' roll in the teenseen from 4-5:30 p.m.

Join us all summer for awesome tech and fun activities and even a special visit from the Dinosaur Lady!

Teens will party like it's 1999 with a special trip to The Flipside, 140 E. Fourth St., and adults can join in the fun with an exploration of rock-and-roll history.

To earn points, visit <http://loveland.readsquared.com>, collect virtual badges and play games. Pre-readers and kids earn a free book and start a rock collection, teens earn coupons to local business and technology prizes, and adults qualify to win one of two Kindle Fires.

Sign-up beginning May 1.



## 2-ON-2 MEN'S SAND VOLLEYBALL LEAGUE

### GET READY FOR SUMMER RECREATION!

MORE PROGRAMS AVAILABLE

VIEW FULL LISTINGS & REGISTER AT  
TEAMSIDELINE.COM/LOVELAND  
OR CALL 970.962.2445



CORNHOLE LEAGUE

3-ON-3  
HIGH SCHOOL  
OUTDOOR  
BASKETBALL

KEVIN COSTNER

## FIELD OF DREAMS

If you believe the impossible, the incredible can come true.



THURSDAY, MAY 31 8:15 PM  
FREE ADMISSION!

Batting cage specials & concessions  
Barnes Softball Complex at Fairgrounds Park  
401 S. Cleveland Ave. Field #4

PRESENTED BY KAISER PERMANENTE  
Movies in the Park Summer Series

## CUBA IN TRANSITION



The Photo Mosaics of Mark Guglielmo

May 31 – July 29  
LOVELAND MUSEUM



503 N. Lincoln Avenue, Loveland, CO 80537

(970) 962-2410

www.lovelandmuseumgallery.org



## BUZZWORDS NONFICTION BOOK GROUP

VERBOTEN BREWERY

6:30 P.M.

June 14: *Into the Wild*

July 12: *Sixth Extinction*

August 9: *The Gene*



lovelandpubliclibrary.org/adults

Benefiting Loveland Youth Gardeners



Get tickets at [LovelandYouthGardeners.org](http://LovelandYouthGardeners.org)  
or at the following locations:  
Fort Collins Nursery • Loveland Garden Ctr  
Loveland Youth Gardeners



## KIDS' SUMMER MOVIE club

Tuesdays  
June 5  
– July 24

10 am  
and  
2 pm

FREE

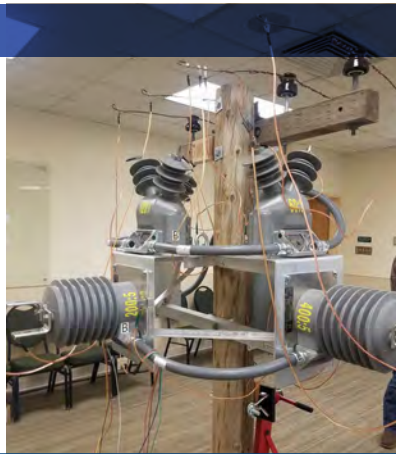
RIALTO THEATER CENTER

228 East Fourth Street • Loveland, CO 80537  
(970) 962-2120 • [rialtotheatercenter.org](http://rialtotheatercenter.org)

City Update is a monthly publication of the City of Loveland. Residents receive City Update according to their utility billing cycle. Timeliness of the information may be affected by recipients' billing schedule. City Update is also available around the first of every month on the City's website at [www.cityofloveland.org](http://www.cityofloveland.org). Your comments are welcome. Please call 962-2302, or email [Tom.Hacker@CityofLoveland.org](mailto:Tom.Hacker@CityofLoveland.org). The City of Loveland is committed to providing equal opportunity for citizens and does not discriminate on the basis of disability, race, color, national origin, religion, sexual orientation or gender. The City will make reasonable accommodations for citizens in accordance with the Americans with Disabilities Act. For more information, please contact the City's ADA Coordinator at 962-3319.

Follow us on  
Facebook,  
Twitter  
and  
YouTube





# POWERING UP ON TRAINING

As a member of the Rocky Mountain Electric Metering Association (RMEMA), Loveland Water and Power (LWP) Metering Supervisor, Matt Sadar, teaches young apprentice and journeyman tricks of the trade during a weeklong training at CSU. Sadar and his colleagues, Steve Falk and Brian Hontz, created a new piece of training equipment this year that allows students to work hands-on with the primary current and voltage transformers, metering enclosures and associated wiring that mimics real-life situations.

Sadar sits on the planning committee at RMEMA, an organization dedicated to teaching the science of metering

electricity and power, keeping abreast of new developments and techniques in the practice of the industry. This year's school attracted a staggering 400+ attendees. RMEMA offers multiple courses from basic, intermediate, advanced and hands-on training for metering personnel, linemen, field engineers and operations managers. Sadar voluntarily teaches a one-week, hands-on class to approximately 40 students each winter. The class draws utility professionals from all over the country. This class is a requirement of the four-year study for most utilities throughout the industry. Sadar, Falk and Hontz created an

overhead primary metering point, all wired up, from equipment donated by vendors that serve LWP. The unit is completely portable, unlike its massive pad mount cousin, and can be divided into three pieces for transport and reassembled in 30 minutes.

An exact replica of what you might see in a real primary overhead metering installation, the overhead rack allows students to walk around the model to practice high voltage and low voltage control wiring or troubleshoot a wiring mishap. The metering point is not energized for safety reasons, but allows students to work with the real thing and discuss different applications as they might be utilized in the field. Sadar says he likes to wire something incorrectly and ask his students to find the problem.

"It's so valuable for the students to be able to work together to troubleshoot an unknown issue, or simply verify that energy consumption is being meter accurately," Sadar said. "It's a great tool for our apprentice meterman and lineman to do training too." Sadar plans to build something new for the class every year.

## What's In My Water?

The Water Quality Report will be available on the City of Loveland's website by June 30<sup>th</sup> of this year.

[cityofloveland.org/waterquality](http://cityofloveland.org/waterquality)



## Working on your sprinkler system? Don't forget your Lawn Sprinkler Permit.

To obtain a permit or for more information visit:  
[www.cityofloveland.org/Backflow](http://www.cityofloveland.org/Backflow) or call: (970) 962 3721

If you are planning to install a new sprinkler system, repair, expand or modify your present sprinkler system, you must meet the requirements of the Loveland Municipal Code and the Colorado Cross-Connection laws. Permits are free and required for all homeowners and contractors.

Property owners can perform normal maintenance activities on their sprinkler systems including replacing sprinkler heads, repairing a leak or adding additional zones without obtaining a permit.





**MAIN SWITCHBOARD**  
**970-962-3000**

**UTILITY BILLING**  
**970-962-2111**

visit us online...  
[cityofloveland.org/LWP](http://cityofloveland.org/LWP)



## ROLL OUT THE RAIN BARRELS

*Alison O'Connor, Horticulture Agent,  
Colorado State University Extension in Larimer County*

Property owners in Colorado may now collect rainwater on private residences (up to a quad-plex). Owners may collect and hold up to 110 gallons on their property at any time. Collected water should only be used in the landscape and not for drinking, bathing, laundry or dishes. It's also not recommended for animal use. Any water should be used within a week to prevent mosquito larvae and other contaminants. For every inch of rain that falls on a catchment area of 1,000 square feet, you can expect to collect about 600 gallons of water. For more info, please visit CSU Extension Fact Sheet #6.707 at [extension.colostate.edu](http://extension.colostate.edu).

1 The downspout attachment must be within 1-2" of the rain barrel inlet.

2 The barrel must have a removable lid. This will help with draining and cleaning.

3 The inlet should be lined with mesh or have a collection screen (like a colander) to collect debris and prevent mosquitoes.

4 The overflow valve should be located near the top of the barrel; attach a hose or PVC pipe to direct water away from the foundation.

5 When full, a barrel can weigh hundreds of pounds. Add a security strap for safety.

6 Install a water spigot near the base of the barrel for ease of use. You can also attach a hose to the spigot.

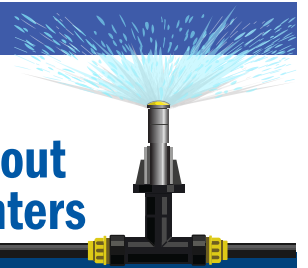
7 Raising the barrel results in better water pressure. Place the barrel on a sturdy, secure base.

8 Use any collected water within 7 days for landscape purposes only!

9 The overflow hose, attached to the overflow outlet, must be directed away from the home's foundation. The overflow hose should be 6-8' long.

Courtesy of City of Fort Collins

## Everything you need to know about Backflow Preventers



### What is backflow?

A 'backflow' refers to water within a pipe or plumbing system that moves in a backward and unintended direction. This reverse flow of water or other substances can result in chemicals or contaminants getting into drinking water in the public or in a private water system. Large-scale backflows sometimes occur when a water main breaks or when a hydrant is used for fire-fighting, causing a dramatic change in water pressure. A home's drinking water supply could be contaminated if a sprinkler system's backflow preventer is not operating properly.

### Why is backflow important?

To ensure that the water-distribution system remains safe and intact, it is imperative that homeowners do an annual inspection of their backflow prevention assemblies and take care of any needed maintenance.

### How do I get my backflow device tested?

Colorado law requires that a home's backflow prevention assembly be tested annually by a certified tester. For a list of certified backflow prevention testers in northern Colorado provided by the Backflow Prevention Education Council of Colorado, go to [bpecc.us/find-a-tester.html](http://bpecc.us/find-a-tester.html). Once completed, a copy of the test and maintenance report must be submitted to Loveland Water and Power.

### Which assemblies are approved?

Colorado law requires water utilities to protect distribution systems by promoting the proper installation and use of backflow prevention assemblies to their customers. The Colorado Water Quality Division has identified approved backflow assemblies for use in Colorado. Assemblies must be ASSE or USE approved. Customers should be aware that both approved assemblies and unapproved devices are on the market.