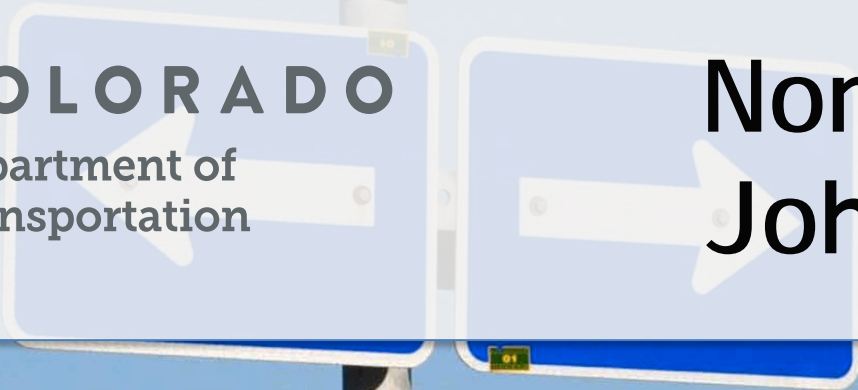


SOUTH NORTH

INTERSTATE
COLORADO
25



COLORADO
Department of
Transportation



North I-25 Express Lanes:
Johnstown to Fort Collins



Project Need

Northern Colorado experiencing explosive growth, offering:

- Thriving economy
- Affordable cost of living
- One-of-a-kind recreational activities
- Award-winning education programs
- Small town feel, yet close to Denver's amenities

Project Need

Influx of new residents expected

- Larimer County—population expected to increase by 52 percent by 2040
- Weld County—population expected to increase by 111 percent by 2040
- CDOT forecasts that this population growth will increase the number of vehicles making daily trips along the I-25 corridor by 60 percent in 2040



Project Funding

- \$300+ million, including:
 - U.S. DOT TIGER grant for \$15 million
 - Widespread community support from northern Colorado totaling more than \$25 million and as much as \$28 million in additional improvement
 - Partnerships and federal grants alleviate funding difficulties including CDOT's reduced relative funding from gas tax, and taxpayer resistance to tax increase

The Solution

CDOT and Northern Colorado unite to jumpstart N I-25 expansion by 14 years



McWHINNEY



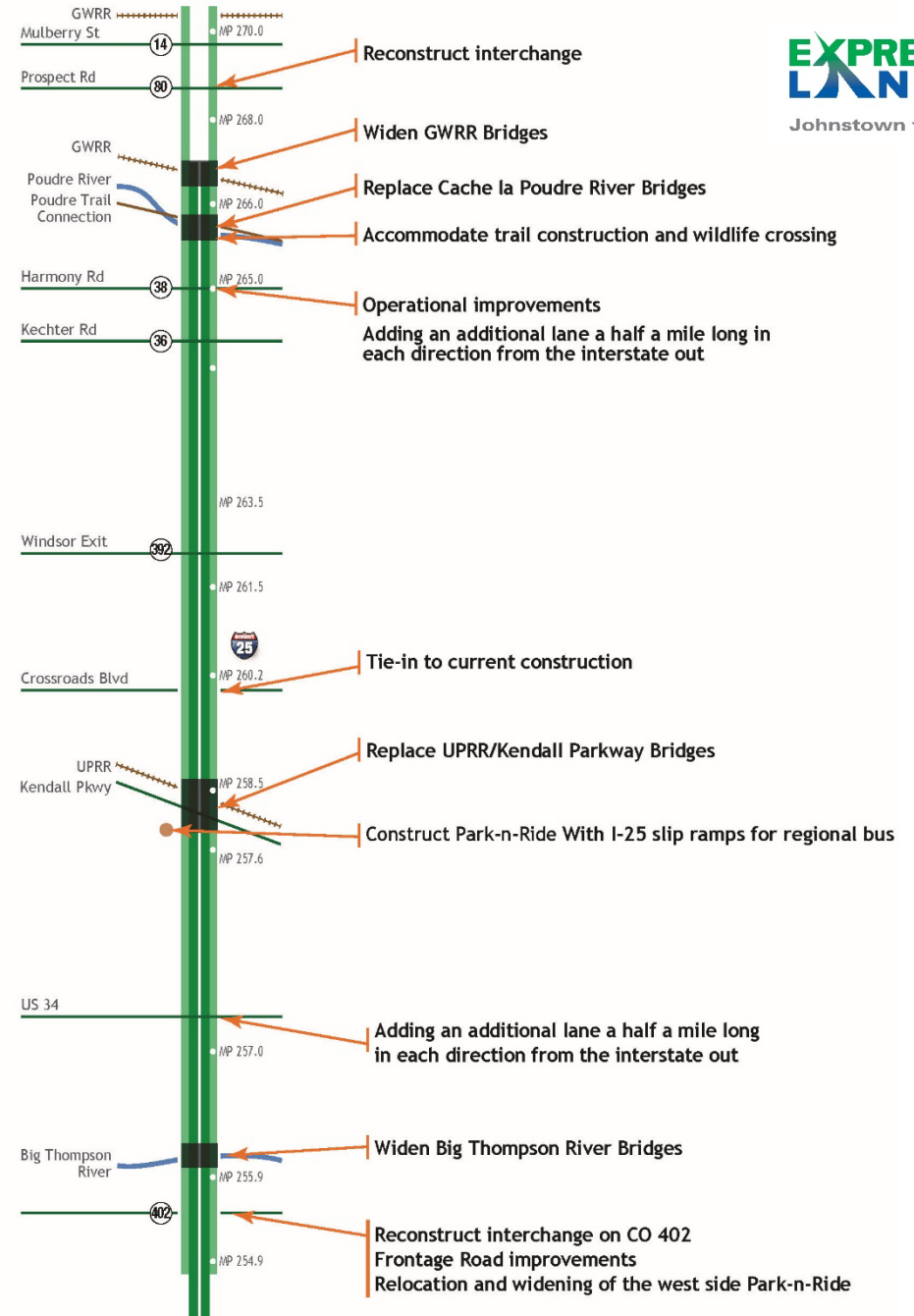
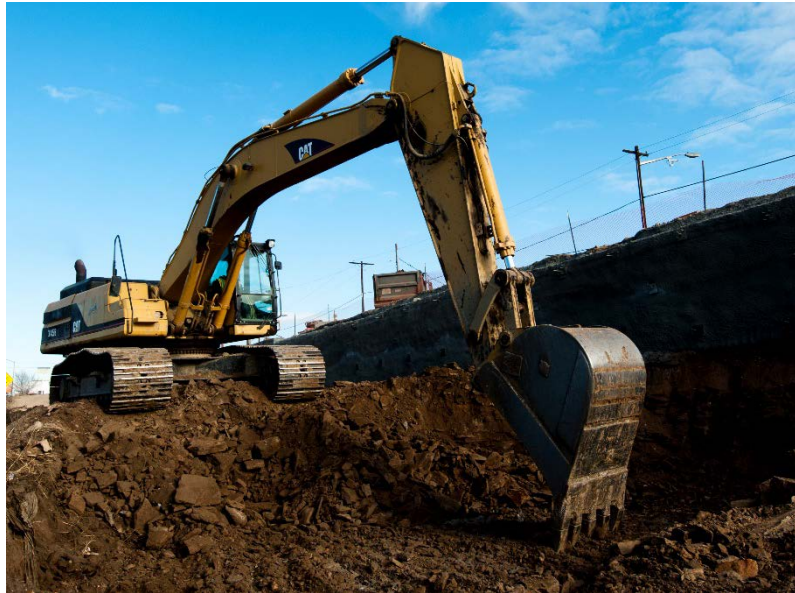


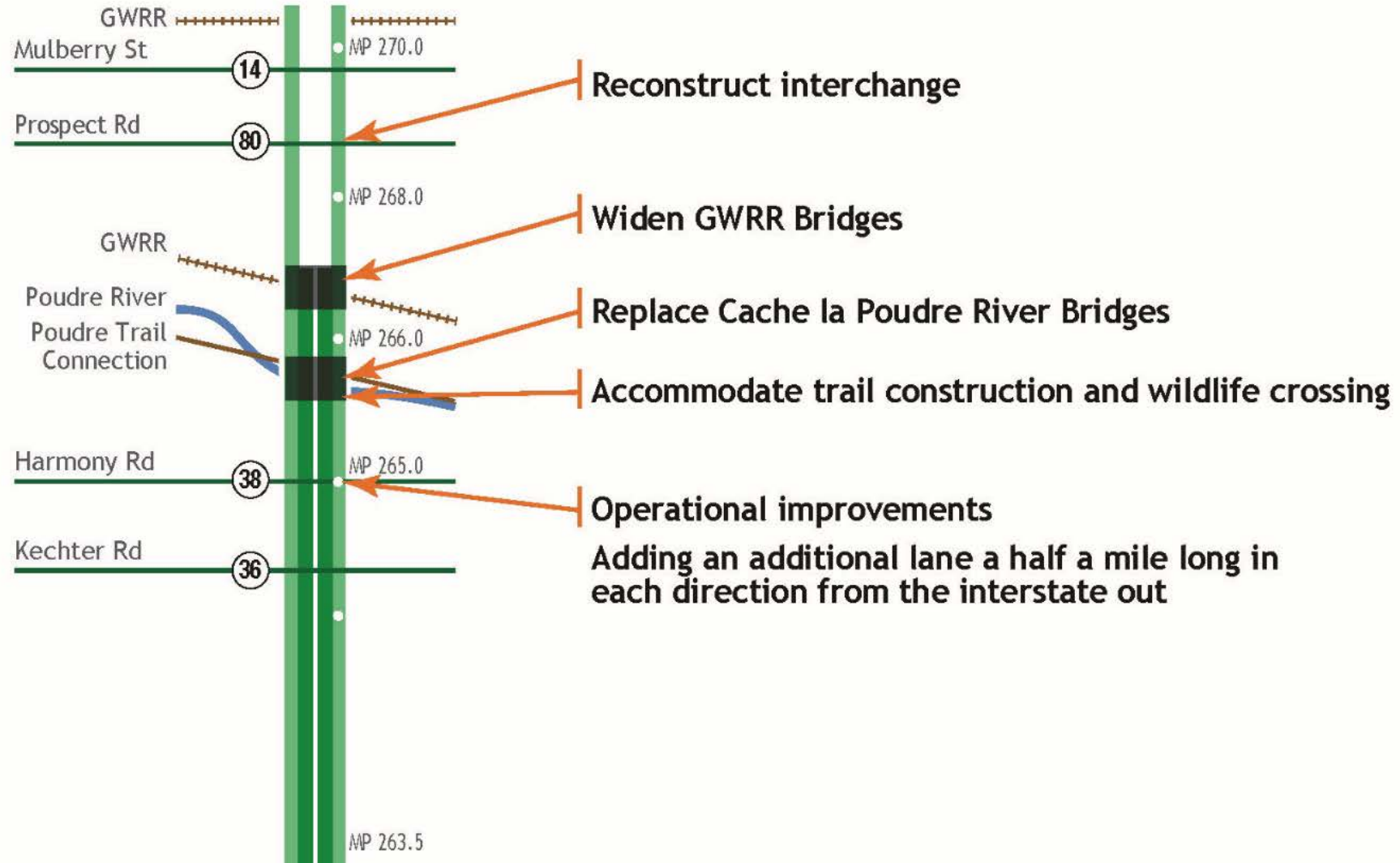
OVERALL IMPROVEMENTS INCLUDE
Rehabilitate or Reconstruct General Purpose Lanes

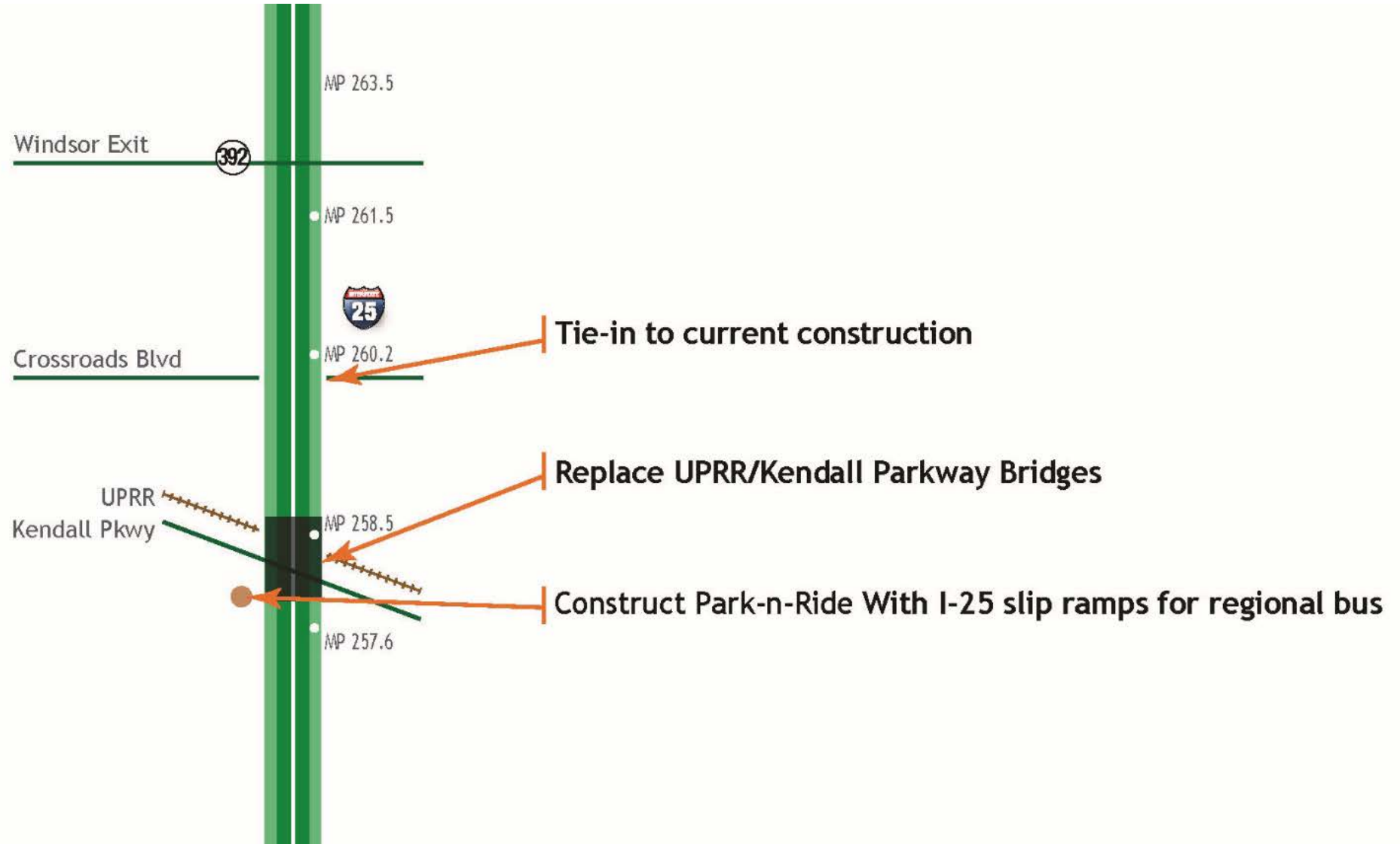
Add Express Lanes

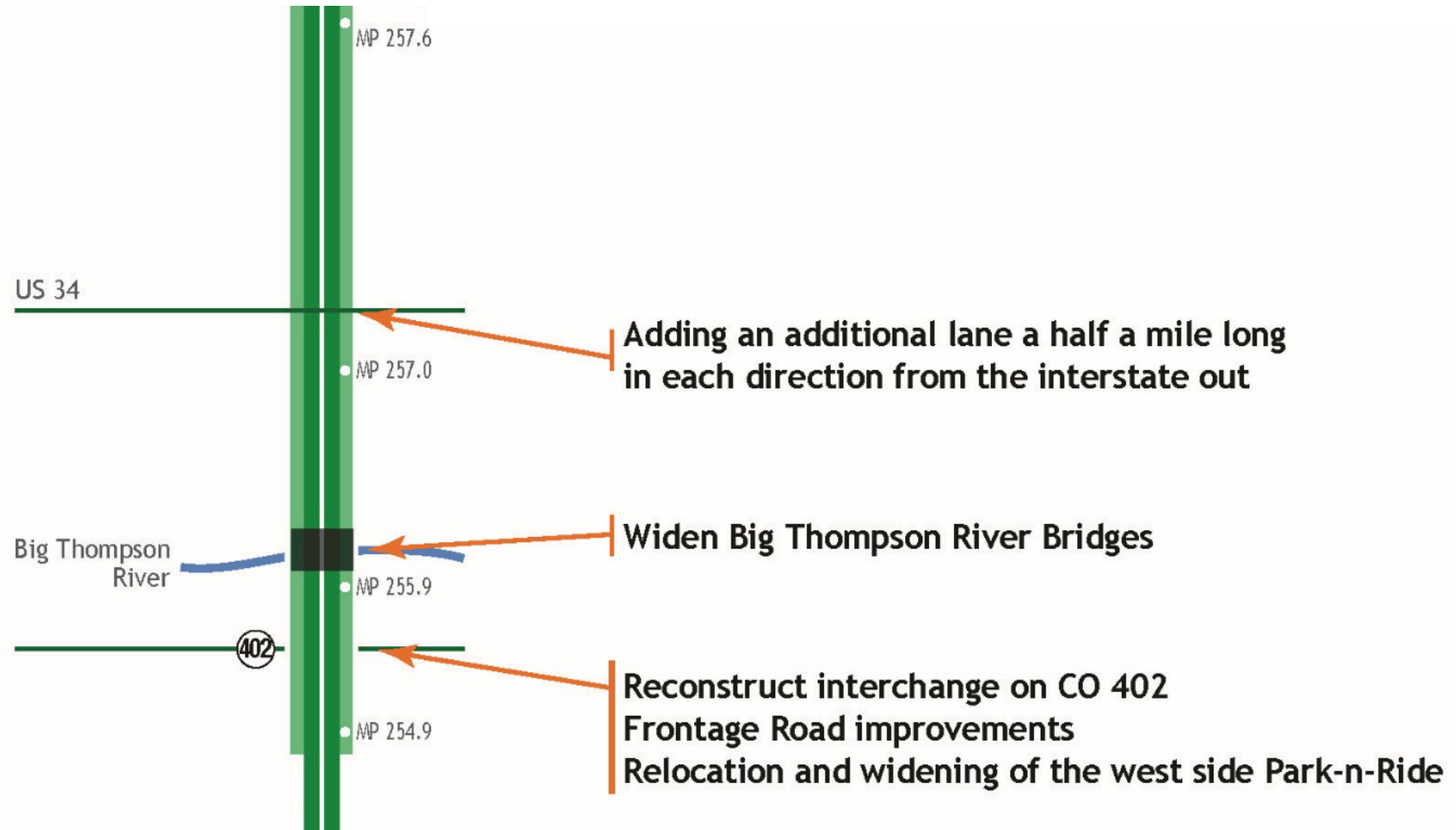
- 1) northbound and 1) southbound (widening to the middle)

Construction of inside and outside shoulders in both directions









Benefits of the Project

- Include much-needed safety improvements that will ultimately reduce crashes and fatalities
- Decrease travel time and increase trip reliability
- Reduce emissions and improve freight efficiency
- Employ congestion management and safety technology to improve travel experience
- Reconstruct aging and obsolete infrastructure
- Improve bicycle, pedestrian and transit connectivity
- Economic development – improvements will provide better public access to amenities and help businesses transport goods and services



EXPRESS LANES

WHY EXPRESS LANES? - CHOICE

- Reduce delay on most seriously congested corridors
- Use toll pricing to manage congestion
- Maintain reliable travel times now and in the future
- Promote transit and carpooling (where viable)
- Always offered along free general purpose lanes



FY 2016-2017 \$1.4 billion budget

CDOT RESPONSIBILITIES

ADMINISTERS
\$208
MILLION
EACH YEAR IN FEDERAL
GRANTS

3,454

BRIDGES

CDOT
MAINTAINS & OPERATES
23,000
 **TOTAL**
LANE MILES
OF HIGHWAY



**DIVISION OF
TRANSIT
AND RAIL**

ADMINISTERS FED/STATE
GRANTS AND OPERATES
BUSTANG

6.1 MILLION
MILES
PLOWED
OF SNOW PER YEAR 

35 MOUNTAIN
PASSES
OPEN YEAR-ROUND 

**AIRPORT
PLANNING**
INTERFACE WITH FAA

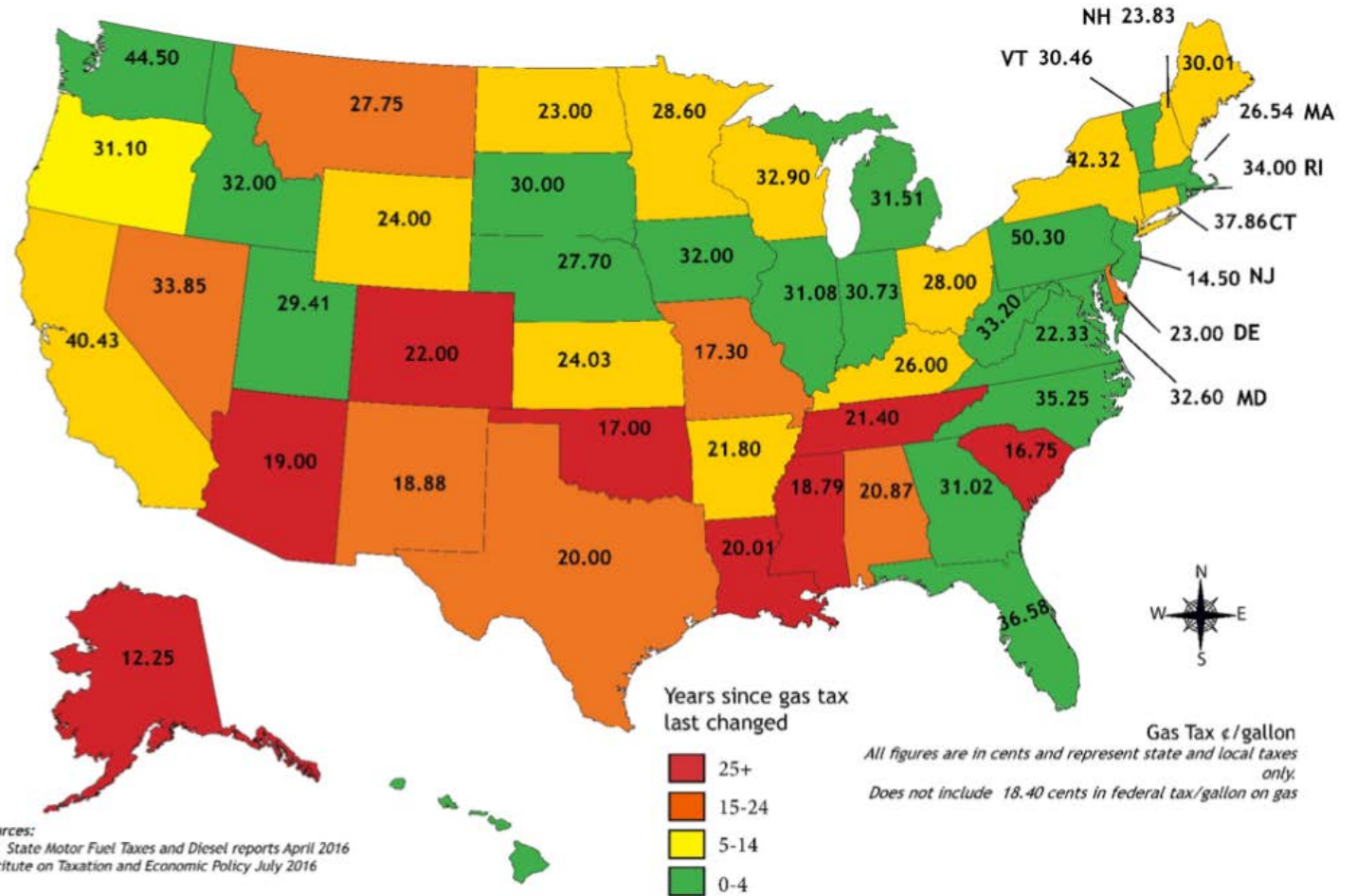




CO has 12th Lowest Gas Tax In The Country



Gas tax has
not been raised since
1991



Benefits

CDOT Express Lanes Deliver Operational Improvements

- Corridors with CDOT's Express Lanes see benefits from the operational improvements across all lanes
- Benefits include:
 - Reduced travel time
 - Faster and more consistent speeds for all lanes on CDOT's Express Lane corridors (US 36, I-70 and I-25 North Express Lanes)



I-70 Mountain Express Lane Results:

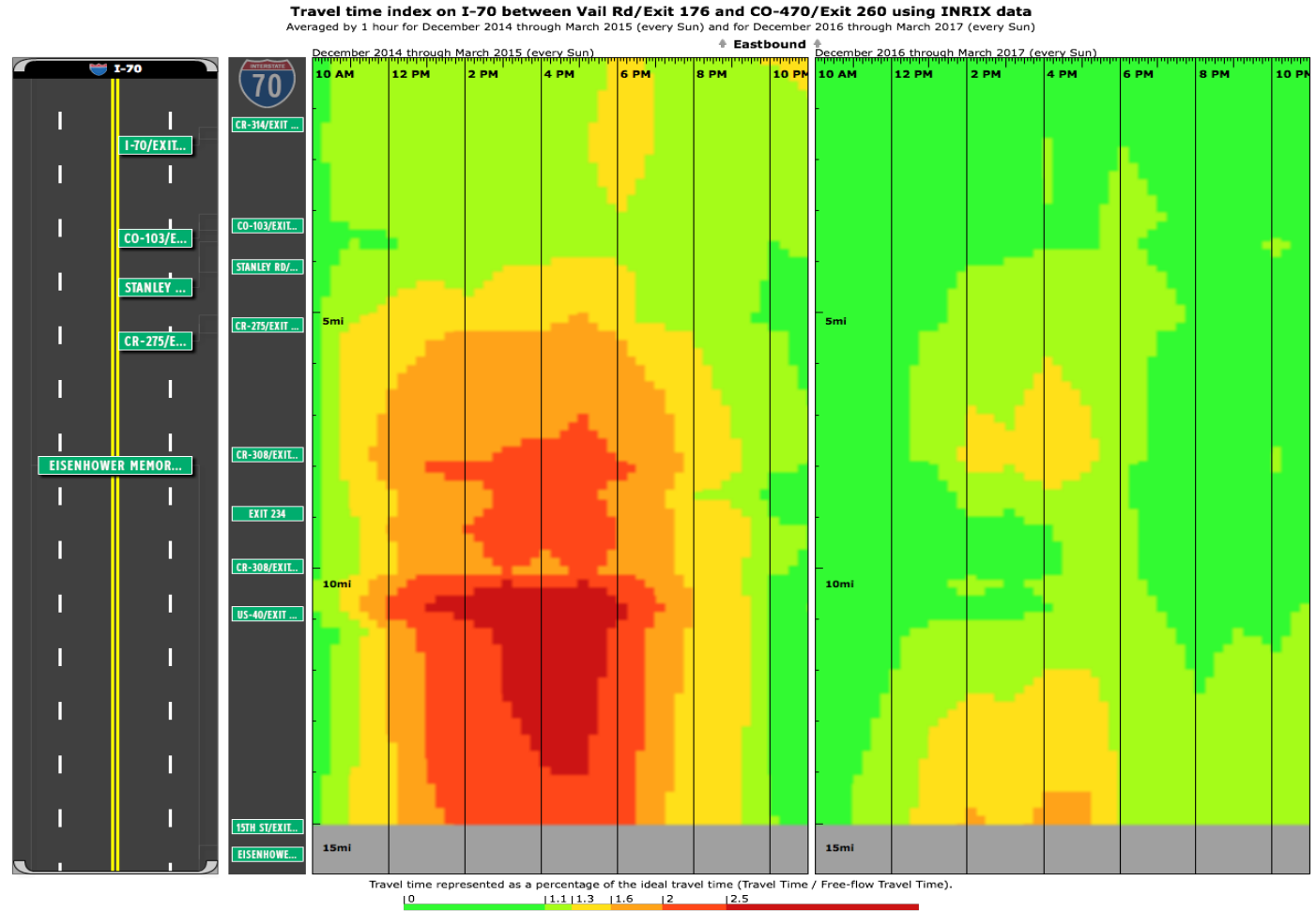
Compare 2014 to 2017

Travel Time Index (EB Sundays on I-70 from Vail Road - C-470)

More consistent, faster speeds, clears incidents and 26-52% reduced travel times, can save up to 30 minutes on a commute

Sundays
Dec. 2014 - March 2015

Sundays
Dec. 2016 - March 2017





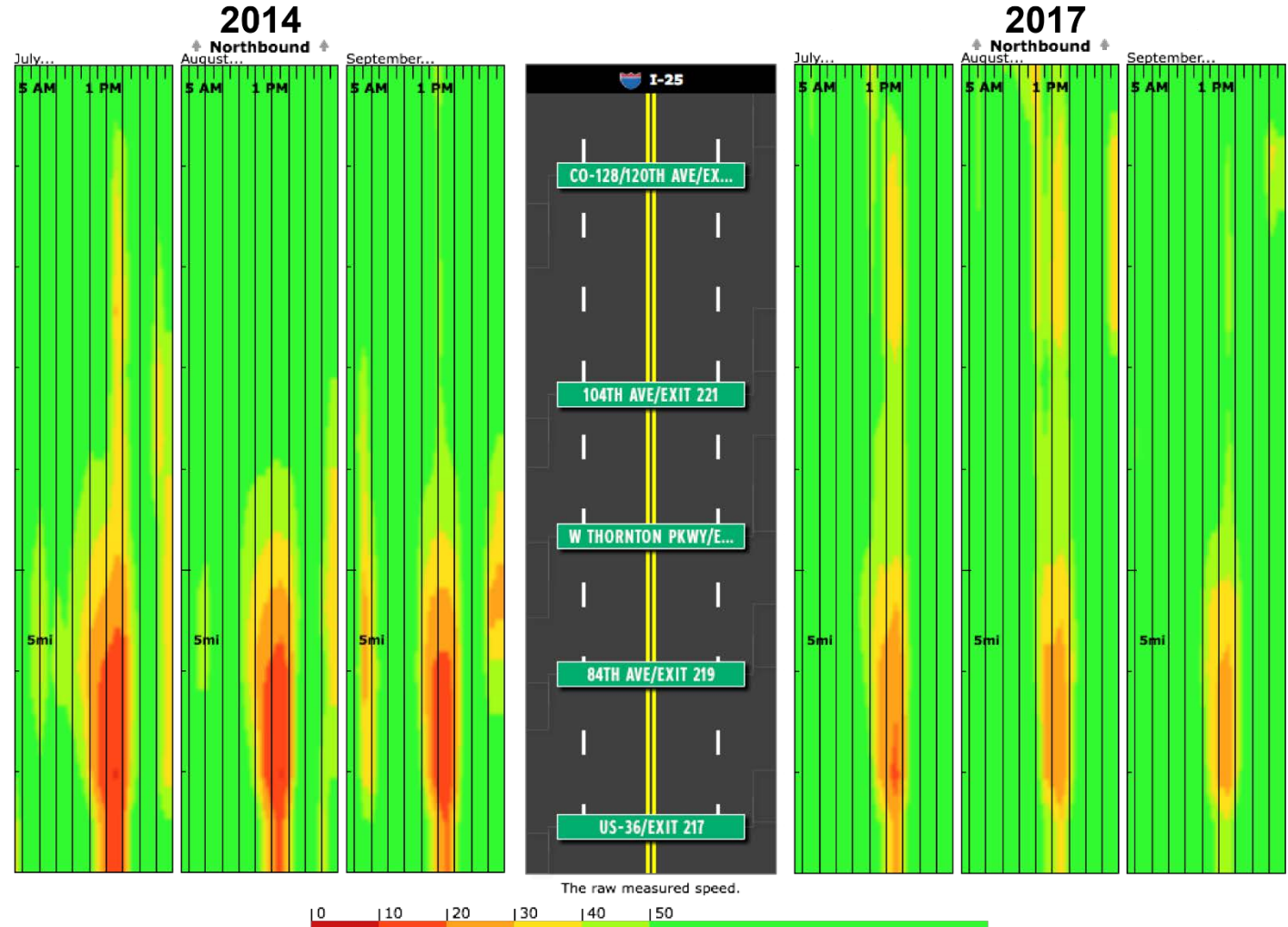
Northbound Speed on I-25 between US-36/Exit 217 and CO-128/120th Ave/Exit 223 using INRIX data

Averaged by 1 hour for July 2014 (every Tue, Wed and Thu), For August 2014 (every Tues, Wed and Thu), and for September 2014 (every Tue, Wed and Thu)

Averaged by 1 hour for July 2017 (every Tue, Wed and Thu), For August 2017 (every Tues, Wed and Thu), and for September 2017 (every Tue, Wed and Thu)

North I-25 Express Lanes Results:

Comparing 2014 to 2017





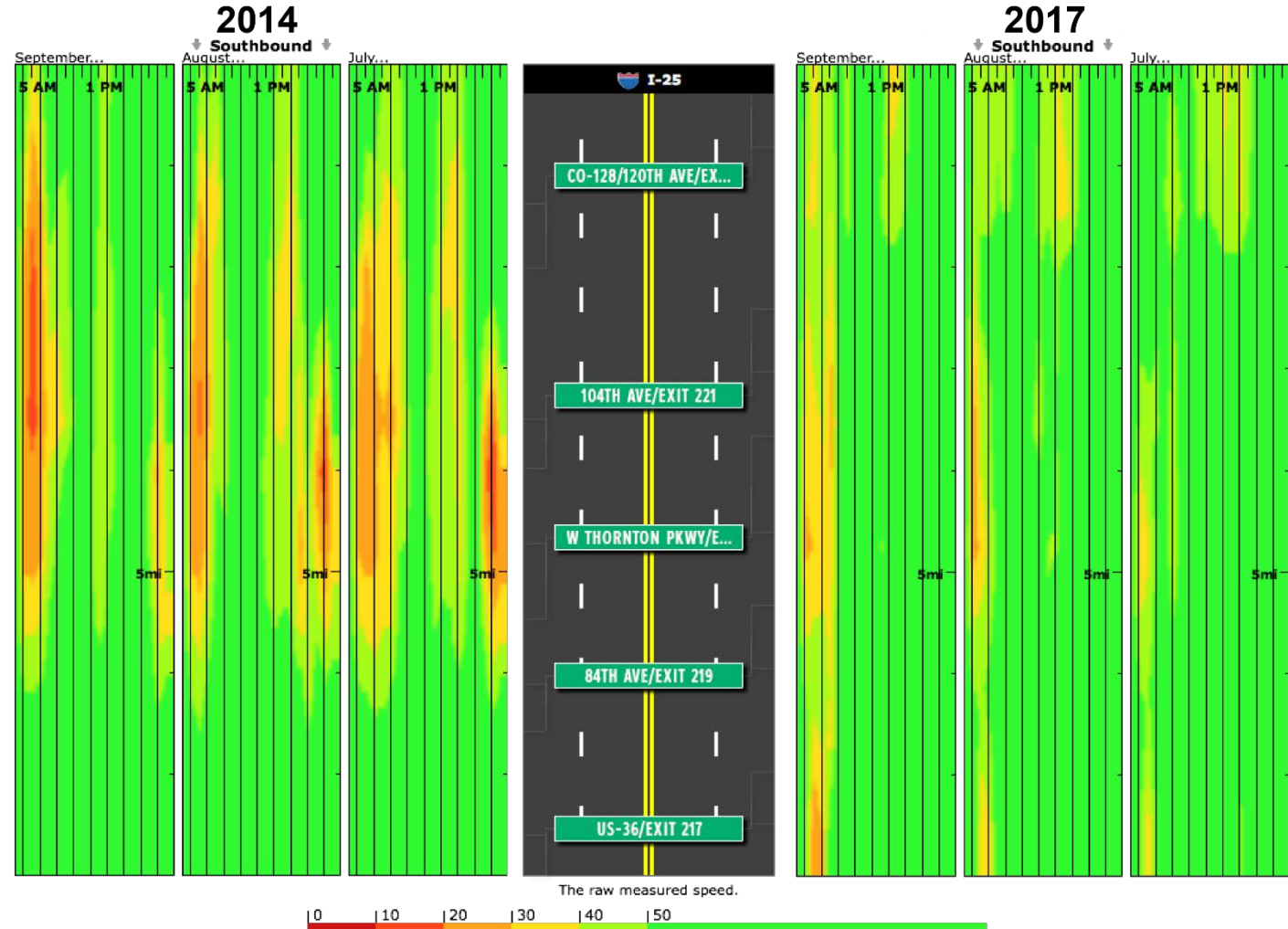
Southbound Speed on I-25 between US-36/Exit 217 and CO-128/120th Ave/Exit 223 using INRIX data

Averaged by 1 hour for July 2014 (every Tue, Wed and Thu), For August 2014 (every Tues, Wed and Thu), and for September 2014 (every Tue, Wed and Thu)

Averaged by 1 hour for July 2017 (every Tue, Wed and Thu), For August 2017 (every Tues, Wed and Thu), and for September 2017 (every Tue, Wed and Thu)

North I-25 Express Lanes Results:

Comparing 2014 to 2017



Project Timeline

- First Notice to Proceed: Early 2018
- Second Notice to Proceed: Spring/Summer 2018
- Construction Completed/Toll Commencement: Late 2021

Construction Phasing and Impacts

- During the daytime, two lanes of travel will remain open to ensure travel reliability to motorists
- Motorists can expect lane closures at nighttime, when travel volumes are lower
- Construction at the interchanges, particularly SH 402 and Prospect Road, will result in detours and impacts to the driving public
- Work is scheduled to begin this summer
- Work will be expected to start on US-34, and on I-25 from Crossroads to SH-392
- CLOMRs are currently driving the schedule



What's Next?

- Set in place funding packages
- Next priorities:
 - Segment 5/CO 66 to CO 56
 - Segment 6/C O56 to CO 402



Stay Informed

- Visit the CDOT website project page: <https://www.codot.gov/projects/north-i-25/johnstown-to-fort-collins/johnstown-fort-collins>
- Address questions or request a presentation from the project team via email northi25expresslanes@gmail.com or phone [720-593-1996](tel:720-593-1996)
- To learn more about Express Lanes, visit www.codot.gov/programs/expresslanes
- To get a Express Lanes pass, visit www.expresstoll.com



COLORADO

Department of
Transportation

QUESTIONS?

North I-25 Project Director
Scott Rees
Scott.rees@state.co.us

I-25 Corridor Manager
Heather Paddock
Heather.paddock@state.co.us

<https://www.codot.gov/projects/north-i-25>