

# Making CONNECTIONS



**Earth moving equipment** works along the undulating prairie path of the Long View Trail, the second regional trail connecting Loveland and Fort Collins.

## ***Regional trail system expands to link cities, open opportunities for bike commuters***

**W**hen a 10-foot-wide ribbon of smooth concrete unrolls next summer across 4 ½ miles of prairie between Loveland and Fort Collins, a quiet revolution in Northern Colorado transportation takes a huge stride forward.

The Long View Trail will follow a route just east of Larimer County Road 17, the two-lane blacktop also known as North Taft Avenue in Loveland and South Shields Street in Fort Collins. Summer's opening will mark a second connection

linking the two cities' 53 miles of paved trails and offer the potential for change that would benefit all the region's residents.

Long View is a twin to the Front Range Trail that opened in November as a direct link between southeast Fort Collins and the Recreation Trail in northeast Loveland. Together, the two routes afford all-season, non-motorized use by cyclists, runners and walkers without a growing load of vehicular traffic streaming by.

"This really breaks a lot of barriers," said Irene Fortune, a long-time advocate for alternative transportation as a member of Loveland's Transportation Advisory Board.

"Connecting Loveland to this region's extensive bicycle trail network will surely encourage people, first, to just try cycling for fun. Then, they might realize they can actually go somewhere. They can head for a coffee shop, the library, the Fort Collins MAX station – or to work – without having to worry about where to park."

Fortune, at age 59, is a dedicated cyclist and living proof that bike commuters don't have to be triathletes. As a transportation policy adviser, she is also mindful that accommodating bicycles on dedicated pathways away from traffic has benefits that extend to all the region's residents, no matter how they travel.

(see **Connections** page 2)



“When people find they can easily get somewhere without having to drive, we’ll see more and more use of these trails,” she said. “Each bicycle that people see on the Longview or Front Range trail means one less car adding to the congestion that is only getting worse in Loveland. I think anybody can appreciate the value of that.”

**Commuting potential**

Consider that a southwest Fort Collins resident will be able to hop on a bike, hit the Long View Trail and be at work for a north Loveland employer in about 20 minutes, and the potential becomes clear.

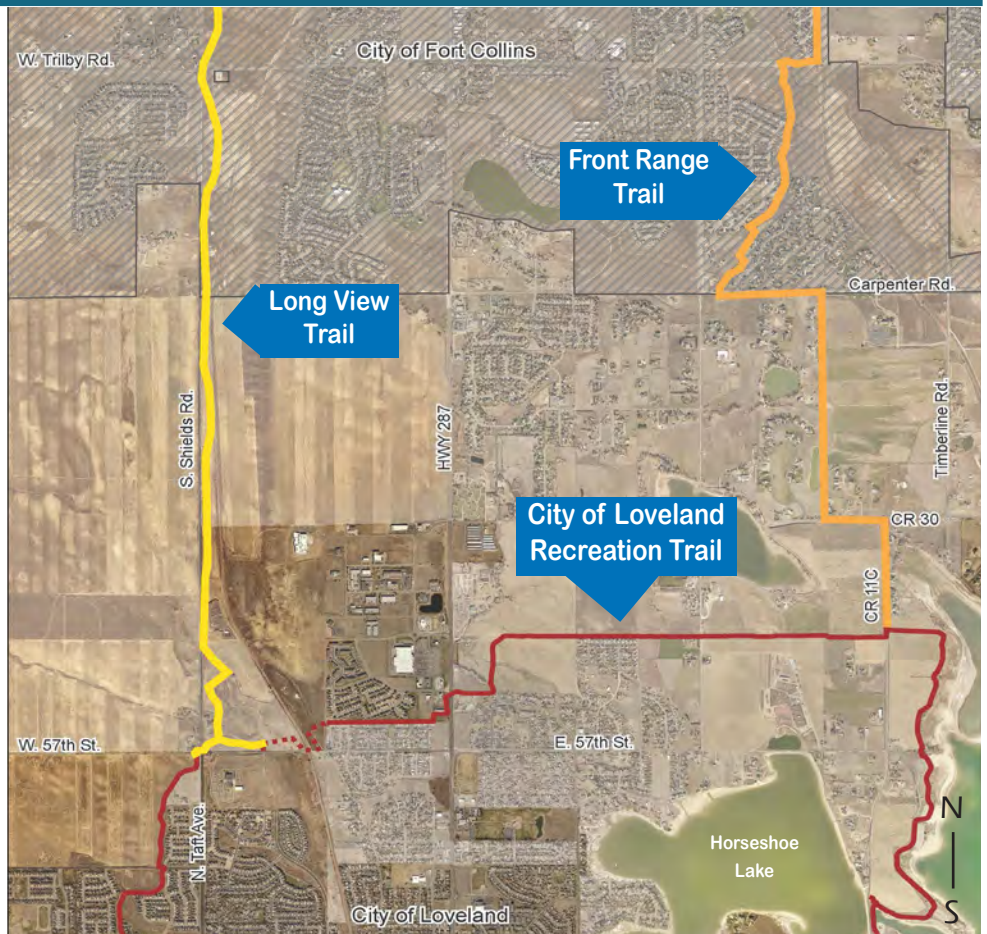
*“This really breaks a lot of barriers.”*

*– Irene Fortune  
Transportation  
Advocate*

More evidence: When elected officials and staff members from Loveland, Fort Collins and Larimer County gathered Nov. 14 for the official opening of the east-side Front Range Trail, bike commuters who had already been using the route had to wait for the big scissors to cut the ribbon.

The two regional trail links reflect the investment that residents of Loveland, Fort Collins and Larimer County have made in development of paved trails and preservation of open space in the region.

Construction is expensive, with the \$4 million budget for the Long View Trail just shy of \$1 million per mile. Two grants – \$1



**Two parallel trails**, one on each side of U.S. Highway 287, provide new intercity commuter routes.

million each – from the Colorado Department of Transportation and the lottery-funded Great Outdoors Colorado will pay half the total cost, with Larimer County, Fort Collins and Loveland sharing the remainder.

**Regional Trail Network**  
Loveland’s Recreation Trail is a 19-mile paved loop that nearly encircles the City. More information is at [www.cityofloveland.org/departments/parks-recreation/recreation-trails](http://www.cityofloveland.org/departments/parks-recreation/recreation-trails).  
For information on the Long View Trail, go to [www.larimer.org/naturalresources/parks/regional-paved-trails/long-view-trail](http://www.larimer.org/naturalresources/parks/regional-paved-trails/long-view-trail), and for information on the Front Range Trail, go to [www.larimer.org/naturalresources/parks/regional-paved-trails/co-front-range-trail](http://www.larimer.org/naturalresources/parks/regional-paved-trails/co-front-range-trail).

Motorists along North Taft Avenue and County Road 17 are watching progress on the trail this winter, sometimes while stopped by flaggers who manage construction traffic along the route.

Long View traverses four designated natural areas, including Loveland’s Sunset Vista Natural Area on the northeast quadrant of Taft Avenue and 57th Street. From its northern origin at Fort Collins’ Cathy Fromme Prairie natural area, the trail passes through that City’s Hazaleus and Colina Mariposa natural areas. It then follows the western boundary of Larimer County’s Long View Open Space to Loveland’s Sunset Vista.

A narrower soft-surface trail, the kind preferred by runners, will run parallel to the concrete surface.

## LPD evidence now suitably housed in new and improved storage center

In making their case for funds to solve a space shortage, a couple of Loveland Police Department employees offered mountains of evidence.

Literally.

More than 46,000 individual pieces of evidence from LPD investigations had been crammed into cabinets, even closets, as outdated storage space filled.

A \$200,000 capital budget appropriation to finish and equip a new evidence storage center has provided the relief that LPD Criminalist Stephanie Jackson and Evidence Technician Margaret O'Brien sought.

The new project that the two brought forth \$50,000 under budget allows for efficient evidence storage, accurate accounting and quick retrieval. New motorized storage modules make the most of the available space, with shelf banks opening and closing accordion-style on tracks in the floor.

The new shelving also allows items to be stored in case-order, further improving efficiency and retrieval of case-specific evidence when it's needed.

"This was way, way overdue," O'Brien said. "We're going to be able to do so much more, now."



**Loveland Police Evidence** Technician Margaret O'Brien stands between tracked, motorized shelf modules that will house items cataloged by investigators in the department's new evidence storage facility.

## New text service enables patrons to get text notices on library items

Last month, City Update featured the Loveland Public Library's (LPL) addition of *Lynda.com*, the online learning platform, to its internet offerings.

Now, the library is offering Shoutbomb – a new text notification service for library patrons. Shoutbomb, like *Lynda.com*, is being made available to Loveland patrons as a result of the library's affiliation with the Flatirons Library Consortium.

By signing up for Shoutbomb,

patrons can receive text messages on due-dates, hold notices, late notices and library closures.

Shoutbomb also makes it possible for patrons to update their



personal library profile information using their cell phones.

Signing up is quick and simple. Just text SIGNUP to 720-893-9151 and follow the prompts. The library does not charge for this service but users may be subject to regular text messaging charges through their phone plans. Text messages are issued only between the hours of 8 a.m. and 7 p.m.

For more information on Shoutbomb, go to LPL's website at [www.lovelandpubliclibrary.org](http://www.lovelandpubliclibrary.org).

## Adults volunteers needed to teach youth about natural environment

Do you love the outdoors? Would you like to share your enthusiasm with local youth?

This spring the Loveland Open Lands Program will provide free training for volunteers interested in presenting unique, hands-on programs about the environment to grade school students in an outdoor setting.

Volunteer instructors receive free training and teaching materials, and no previous knowledge or experience is needed.

The experiential field trip programs are offered to local school groups on weekdays in the spring and fall at River's Edge Natural Area.

After participating in a half-day training session and pairing up with experienced volunteers to become familiar with the curriculum, instructors help teach a series of 25 to 45-minute programs with a short lecture and activity at each learning station, where small groups of students rotate throughout the day.

Curriculum offerings include a variety of topics, including wildlife, native plants, habitats, river health, watersheds, life zones and more.

An informational Open House for potential volunteers will be held from 6-7:30 p.m. on Thursday, March 8 at the Parks & Recreation

Administrative Office. Volunteer training will be offered March 20-23 at River's Edge.

For more information and to sign up, visit [www.offerocityofloveland.org](http://www.offerocityofloveland.org) or email [michele.vanhare@cityofloveland.org](mailto:michele.vanhare@cityofloveland.org).





# NEED A SUMMER JOB?

## Join the City of Loveland Aquatics Team!

We are looking for **ALL AQUATICS POSITIONS** to work at the Chilson Recreation Center, Winona Outdoor Pool, and the Loveland Swim Beach.

Applications & Openings are Online:  
**CityofLoveland.org/jobs**

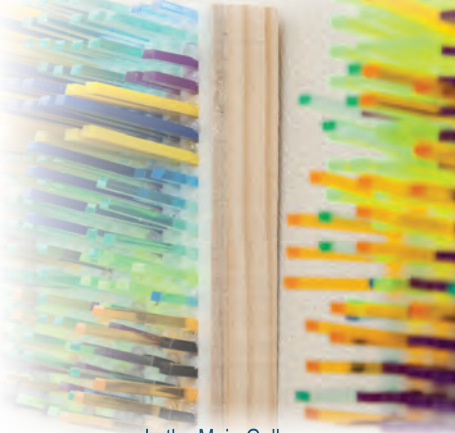
**Chilson**  
Recreation Center



700 E 4th Street • Loveland, CO • 970-962-2FUN

# BRANDON S. GELLIS INNATE CONFLUENCES

*A visceral, multimedia experience.*



In the Main Gallery

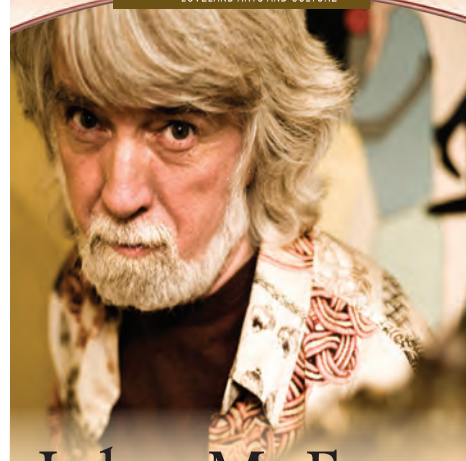
**MARCH 3 – APRIL 29, 2018**



503 N. Lincoln Avenue, Loveland, CO 80537

(970) 962-2410

[www.lovelandmuseumgallery.org](http://www.lovelandmuseumgallery.org)



## John McEuen

THURSDAY, APRIL 12, 7:30 pm

Get tickets online:

[www.rialtotheatercenter.org](http://www.rialtotheatercenter.org)

**RIALTO THEATER CENTER**

228 East Fourth Street • Loveland, CO 80537

(970) 962-2120 • [rialtotheatercenter.org](http://rialtotheatercenter.org)

## ART CLASSES at the Loveland Museum



Register **TODAY** for

### SPRING BREAK CLASSES!

[www.lovelandmuseumgallery.org/classes-workshops/](http://www.lovelandmuseumgallery.org/classes-workshops/)



503 N. Lincoln Avenue, Loveland, CO 80537  
(970) 962-2410

[www.lovelandmuseumgallery.org](http://www.lovelandmuseumgallery.org)

## Children's Day

Celebrated in Loveland since 2002

**Friday, March 9, 11A-3P**

(Afterhours "Night at the Museum" from 3-6P)

With a different format for 2018, children will be celebrated around the City of Loveland! Kids can learn and have fun at each location.

### Locations & Activities Include:

- **Public Works Building (2525 W 1st)** Stormwater puppet shows, pollution prevention demos, flood information & rain gauges, sweeper truck demos
- **Chilson Recreation Center (700 E 4th)** FREE youth day pass (w/paid adult), SNAG golf, athletics & fishing demos at the lagoon, pottery, cooking, LEGO® demos
- **Loveland Public Library (300 N Adams)** Story time, face painting, arts & crafts activities
- **Fire Station #1 (410 E 5th)** "Touch a Truck", police and fire safety, ID kits for kids, kettle corn
- **Traffic Operations Center (105 W 5th)** "Touch a Truck", walk through to see the traffic control "big screen", bike safety activities
- **Loveland Museum (503 N Lincoln)** History and art activities throughout the museum for Children's Day afterhours (3-6 ONLY)

For more info, visit:

[CityofLoveland.org/ChildrensDay](http://CityofLoveland.org/ChildrensDay)



## St Patrick's Day LUNCHEON

at the Chilson Senior Center

Have fun celebrating St Patrick's Day with delicious corned beef & cabbage, cake, & Irish entertainment! Bring a canned food donation for the *House of Neighborly Service*.

**Reservation Deadline:**

**Thurs, 3/15 at 1:30P**

**Call (970) 472-9630.**

**Seating is limited.**

Fee: \$2.50 donation

**Friday, 3/16  
11:45A-1:00P**

**Chilson** 700 E 4th Street • Loveland, CO  
Recreation Center (970) 962-2FUN • [CityofLoveland.org](http://CityofLoveland.org)

City Update is a monthly publication of the City of Loveland. Residents receive City Update according to their utility billing cycle. Timeliness of the information may be affected by recipients' billing schedule. City Update is also available around the first of every month on the City's website at [www.cityofloveland.org](http://www.cityofloveland.org). Your comments are welcome. Please call 962-2302, or email [Tom.Hacker@CityofLoveland.org](mailto:Tom.Hacker@CityofLoveland.org). The City of Loveland is committed to providing equal opportunity for citizens and does not discriminate on the basis of disability, race, color, national origin, religion, sexual orientation or gender. The City will make reasonable accommodations for citizens in accordance with the Americans with Disabilities Act. For more information, please contact the City's ADA Coordinator at 962-3319.

Follow us on  
Facebook,  
Twitter  
and  
YouTube



# STORMWATER ENGINEERING-KEEPING STORMWATER CLEAN AND

The City's Stormwater Engineering Division encourages the entire community to keep Loveland's waterways clean and free of pollutants and we work to help protect the community from flood events.



## COLORADO WATER IS IMPORTANT TO ALL OF US SO LIVE LIKE YOU LOVE IT

Colorado water is very popular. That's because a lot of people depend on it. The snow that falls in the Colorado Rockies not only provides water to 5.46 million Coloradans, but also to people living in 18 other states. Colorado is the only state other than Hawaii where flows out of its borders, but doesn't flow in.

## ONLY RAIN TO THE DRAIN

The daily activities of all of us has the potential to affect water quality if we don't make good choices. Stormdrains are connected directly to our water bodies so anything that ends up on the driveway, alley, roof or sidewalk eventually will be carried by rain water and/or snow/ice melt to a water body such as Lake Loveland or the Big Thompson River.

### 1. PICK UP PET POOP

Pet waste can get flow storm drains and spread bacteria.

### 2. FIX THE OIL LEAK

Car leaks can spread oil into the water supply.

One pint of oil can makea slick larger than a football field.

### 3. DIRECT YOUR DOWNSPOUTS

Ensure downspouts are pointed toward the lawn or plants, not the sidewalk.

### 4. SWEEP

Sweep up dirt and debris. Dirt on sidewalks and streets wash into the stormdrain and pollute our water.

### 5. COMPOST

Compost and amend soil. Healthy soil acts as a water filter.

### 6. USE FERTILIZERS AND PESTICIDES SPARINGLY

**FOLLOW INSTRUCTIONS** - Read labels on lawn chemicals carefully.

Always apply products sparingly. Consider hiring a professional applicator.

**GO NATURAL** - Consider compost or natural lawn chemical alternatives.

Composting creates natural, slow-release fertilizer and soil-enhancing material.

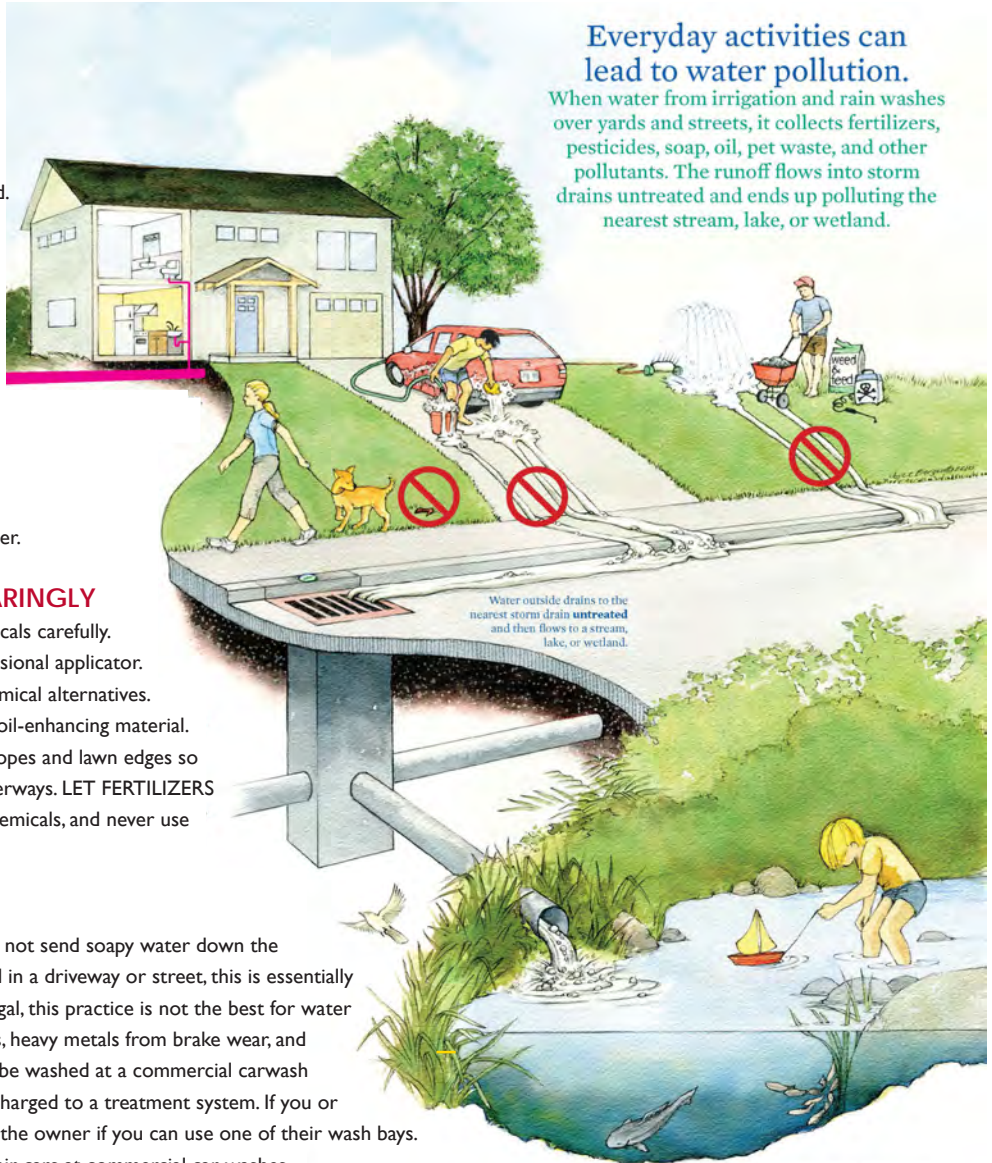
**BE AWARE WHERE YOU FERTILIZE** - Use caution on slopes and lawn edges so

fertilizer will not wash into near-by storm drains or waterways. **LET FERTILIZERS**

**DRY PROPERLY** - Allow proper drying time for liquid chemicals, and never use lawn chemicals before a heavy rainfall is expected.

### 7. USE A COMMERCIAL CAR WASH

A commercial car wash is more water efficient and does not send soapy water down the driveway and into the storm drain. When a car is washed in a driveway or street, this is essentially like washing the car in a local waterbody. Though not illegal, this practice is not the best for water quality as car wash water can contain fluids from engines, heavy metals from brake wear, and phosphorous from the soap and dirt. Ideally, cars should be washed at a commercial carwash where the water is some-times reused and is always discharged to a treatment system. If you or someone you know is planning a carwash fundraiser, ask the owner if you can use one of their wash bays. Encourage your friends, family and neighbors to wash their cars at commercial car washes.



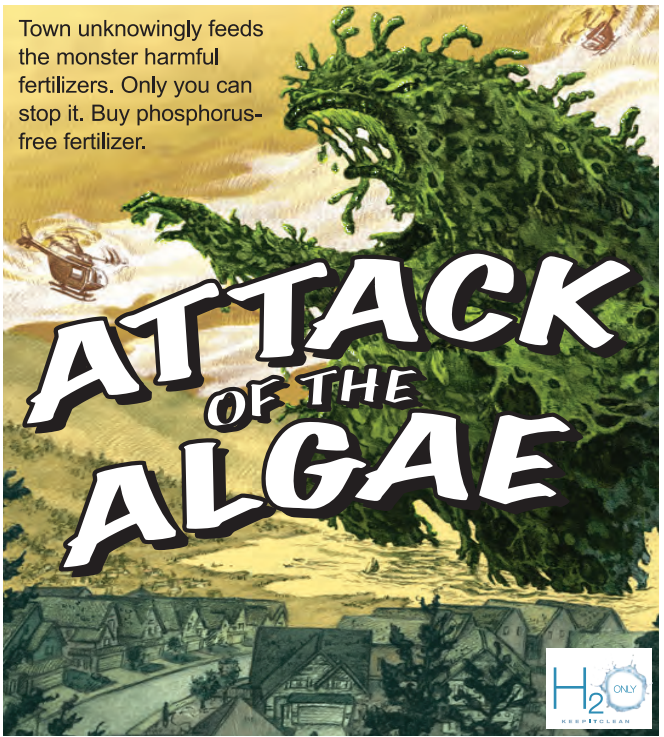
**Everyday activities can lead to water pollution.**  
When water from irrigation and rain washes over yards and streets, it collects fertilizers, pesticides, soap, oil, pet waste, and other pollutants. The runoff flows into storm drains untreated and ends up polluting the nearest stream, lake, or wetland.

FOR MORE INFORMATION, CONTACT LOVELAND'S STORMWATER DIVISION AT 970-962-2772 OR VISIT OUR WEBSITE AT [WWW.CITYOFLOVELAND.ORG/STORMWATER.ORG](http://WWW.CITYOFLOVELAND.ORG/STORMWATER.ORG) OR FIND US ON FACEBOOK



Town unknowingly feeds the monster harmful fertilizers. Only you can stop it. Buy phosphorus-free fertilizer.

## ATTACK OF THE ALGAE



### WHAT'S THE PROBLEM WITH NUTRIENTS!

The nutrients from the fertilizer, pesticides, and soap can cause excess algae to grow. Just like in your garden, nutrients in waterbodies makes plants grow. Over application of fertilizers and pesticides can result in runoff that carries toxic levels of chemicals or excessive nutrients into our waterways. Too much algae harms water quality and makes boating, fishing and swimming unpleasant. As algae decay, they use up oxygen in the water that fish and other wildlife need. This pollution impacts aquatic life, wildlife and people who recreate and fish. The results are often unpleasant odors, taste, and poor aesthetics which can cause health problems in humans and livestock.

### DON'T FEED STORM DRAINS

Prevent materials/pollutants, i.e., oil, pesticides, fertilizer, paints, soaps, solvents, oil, trash, sand, grass clippings, leaves, paint, etc. from reaching the City's storm drain. Stormwater runoff from rain and snow/ice melt picks up materials on the ground before entering the storm sewer and discharges them untreated directly into our waterbodies.

Section 13.20.130 of the Loveland Municipal Code states that: "It is unlawful and constitutes a nuisance for any person to discharge or cause to be discharged or spilled, or to maintain a condition upon any property that may result in the discharge of, any substance other than naturally occurring stormwater runoff into the City's storm drain system (any of which shall constitute an Illicit Discharge)."



## 3 fast FLOOD FACTS

- Heavy rain can bring dangerous flash flooding.
- 6 inches of moving water can knock a person down.
- 2 feet of moving water can sweep a vehicle away.



Whether you're walking or driving, stay clear of floodwater. Share these facts with friends so they're safe too.



## REAL TIME EARLY FLOOD WARNING SYSTEM

The City of Loveland has nine rain/stage gauges located within the City of Loveland and on the Big Thompson River. These rain/stage gauges continuously monitor rain levels, flow rates, depth of waterways and send real time data back to the Stormwater Engineers within the City of Loveland. With this data the City Engineers, City Public Works crews and Emergency Response personnel are able to monitor the rising water levels, deploy personnel to the areas that are most critical, and close all roadways before the waters over top the roadways, thus protecting the citizens of Loveland from flooded waterways. Because of the success of the Early Flood Warning System and the Emergency Response Action Plan that was initiated on September 10, 2013, the City of Loveland police and fire personnel did not have to be put in harm's way to rescue anyone within City limits.

**FLOODING AHEAD  
TURN AROUND  
DON'T DROWN**