

Boyd Parallel Interceptor and Morning Drive 30” Waterline (Phase 2) Project



Tanner Randall, PE - Senior Civil Engineer
October 18, 2017

30” Morning Drive Waterline Extension

- Project Overview

24” Parallel Boyd Sanitary Sewer

- Project Overview

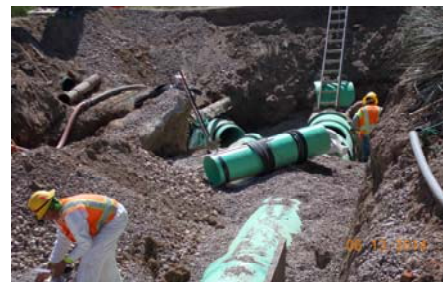
Delivery Model

Schedule

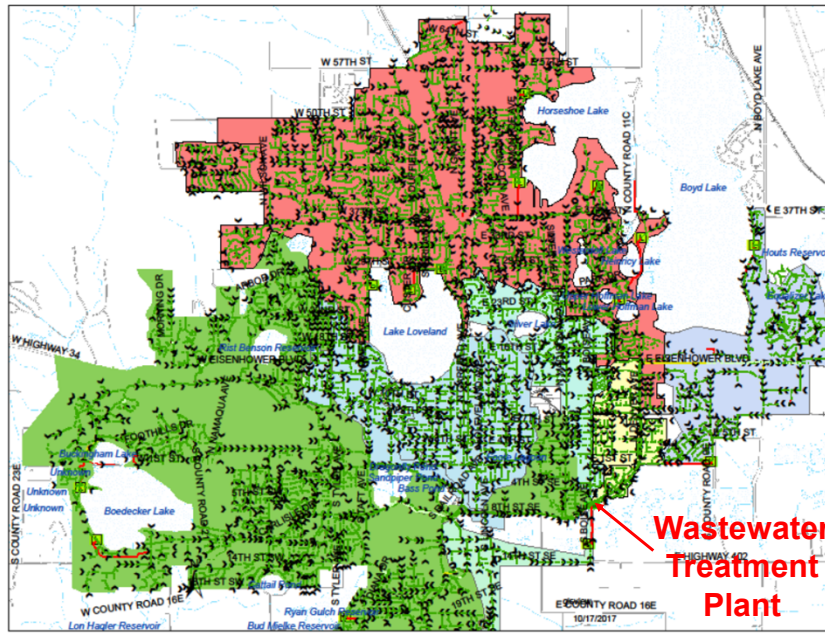
- Preliminary Design
- Final Design
- Two Phase Construction

Current Steps

- HDR Final Design Contract



24" Old Boyd Parallel Sewer Interceptor



- Six Sewer Basins
- Meeting Hydraulic Demands
 - Conveying Existing Flows
 - Planning for Future Wastewater Loads



24" Old Boyd Parallel Sewer Interceptor Details



- Long Planned Project
- Increase Capacity
- Future Growth
- Coordination with Other City Departments
 - Electric-Conduits
 - Stormwater
- Ditch Crossing
- ~\$5.5 Million Construction Budget



Delivery Model

🌀 Construction Manager at Risk (CMaR) Project Delivery

- 🌀 Emphasis on Best Value
- 🌀 Constructability Review
- 🌀 Accurate & Continuous Cost Estimating
- 🌀 Team Approach
- 🌀 Pre-Construction Services

🌀 Contractor Selected via Multi-Criteria Process

- 🌀 Capability
- 🌀 Similar Projects
- 🌀 Loveland Experience
- 🌀 Alternative Delivery Experience
- 🌀 Cost Factors

🌀 Estimate Process

- 🌀 City and Engineer Involved in Material Selection & Bidding
- 🌀 Third Party Estimate
- 🌀 No Bid Day Surprises – Maximize Budget



Schedule

🌀 Preliminary Design

🌀 Final Design

- 🌀 Fall/Winter

🌀 Construction Phase 1

- 🌀 Sewer Ditch Crossing (February 18)
- 🌀 Procure Water Materials

🌀 Construction Phase 2

- 🌀 Waterline Installation
- 🌀 Pump Station Tie-in
- 🌀 Remainder of Sewer



HDR Contract Amendment

🌀HDR Completing Preliminary Design & Basis of Design Reports

🌀~\$135,000 Contract Covered both Projects

🌀Final Design Contract Amendment

🌀~\$398,000 Total

🌀~\$273,000 - 24" Boyd Parallel Interceptor (Wastewater)

🌀~\$125,000 - 30" Morning Dr. Waterline Extension

🌀Contract Totals

🌀~\$533,000 Updated Contract Total



QUESTIONS?