

CITY OF LOVELAND VISUAL ARTS COMMISSION
SPECIAL MEETING AGENDA (Please note location)
THURSDAY, SEPTEMBER 7, 2017
5:00 PM
Rialto Theater Center, 228 East Fourth Street, Loveland
Devereaux Room

Call Meeting to Order

- A. Additions or Corrections to the September 7, 2017 meeting agenda
- B. Additions or Corrections to the August 3, 2017 meeting minutes
- C. Citizen Comments: Citizens wishing to address the Visual Arts Commission shall be allotted 3 minutes to address VAC business
- D. AIPP Budget

VAC Business/Action Items

- A. Mountain Lion Avenue Roundabout Sculpture Presentations
 - a. 5:10pm: Artist, Richard Taylor (TBC)
 - b. 5:45pm: Artist, James Johnson (TBC)
 - c. 6:20pm: Artist, Mike Buckley
 - d. Discussion
 - e. Voting Rounds
- B. BREAK 10 minutes
- C. Chilson Recreation Center Project: Committee Finalist(s) Recommendations
- D. The Foundry RFQ
- E. *Splash of Red* by Euleta Palser
 - a. Image of installation
 - b. Dedication Date
- F. Solveig Lark: Loveland's Cheerleader Plaque
 - a. Installation
 - b. Cost
- G. Denny Haskew Proposal – Meeting Date
- H. DeDecker Proposal

Staff Updates

- A. Loveland Rotary
- B. AFTA 2017 Public Art Pre-Conference Planning Meeting
- C. TAAP Brochure
 - a. Design
 - b. Reception
- D. Artworks Loveland Mural, *Artworks Tools* by Jennie Milner
- E. Highway 34 Median Trees
- F. Maintenance
 - a. *Sculpture Services of Colorado Reports*
 - b. *Robert Tully Estimate: Special Treatments Compass: Guard Bar and Sealant*
 - c. *Red Rocks Divide* by Joshua Been, Marianna Butte Clubhouse
- G. *Hot Metal, Cold Brews Event*, Friday, October 13, 5-8pm - Bronze Pour: Jennifer Cousino Art by Bike (Cycling/Art Maps)
 - a. *Volunteer Opportunities*
- H. AFTA Public Art Review Event: Best of 2016: November Date
- I. Hung Liu Exhibit Lecture

City Council Update

Agenda Items for October

- A. Chilson Recreation Center: Artist Presentations
- B. First Street Bridge
 - a. Design – Shawn Fetzer, Public Works
 - b. Artwork: *Nebula* by Sandi Nelsen

Information Sharing

Adjournment

The City of Loveland is committed to providing an equal opportunity for services, programs and activities and does not discriminate on the basis of disability, race, age, color, national origin, religion, sexual orientation or gender. For more information on non-discrimination or for translation assistance, please contact the City's Title VI Coordinator at TitleSix@cityofloveland.org or 970-962-2372. The City will make reasonable accommodations for citizens in accordance with the Americans with Disabilities Act (ADA). For more information on ADA or accommodations, please contact the City's ADA Coordinator ADACoordinator@cityofloveland.org or 970-962-3319.

“La Ciudad de Loveland está comprometida a proporcionar igualdad de oportunidades para los servicios, programas y actividades y no discriminar en base a discapacidad, raza, edad, color, origen nacional, religión, orientación sexual o género. Para más información sobre la no discriminación o para asistencia en traducción, favor contacte al Coordinador Título VI de la Ciudad al TitleSix@cityofloveland.org o al 970-962-2372. La Ciudad realizará las acomodaciones razonables para los ciudadanos de acuerdo con la Ley de Discapacidades para americanos (ADA). Para más información sobre ADA o acomodaciones, favor contacte al Coordinador de ADA de la Ciudad en ADACoordinator@cityofloveland.org o al 970-962-3319.

City of Loveland Art in Public Places

The Foundry Project Parking Garage – Lincoln Avenue (Highway 287 North)

The City of Loveland Art in Public Places is accepting Requests for Qualifications for two sculptural works to be installed in downtown Loveland for *The Foundry* project. Public artwork will be prominently featured throughout this development through permanent installations, annual public art projects and temporary installations.

City Parking Garage (Permanent Installations): Two areas on the City's public parking structure have been identified for public art installations. Artists/artist teams may apply for one or both projects. (Separate applications must be submitted for each site.)

Parking Garage – Lincoln Avenue Budget: \$ 50,000
Parking Garage – Second Street Budget: \$100,000 (See other CAFÉ listing to apply)



Background

In February 2016, Brinkman Partners emerged as the City's choice in a competitive search for downtown redevelopment proposals. Brinkman's subsequent proposal, *The Foundry*, pays homage to Loveland's reputation as a showcase for art, especially sculpture, and celebrates the local foundries where artists from across the world come to cast their work.

The Foundry is a sweeping redevelopment of nearly three city blocks in southern downtown Loveland which will provide a strong foundation for the revitalization of Loveland's historic

downtown. Construction began in spring 2017 to transform the City's downtown corridor into a new epicenter of entertainment with movie theater, hotel, apartments, offices, retailers, hotel and ample downtown parking. (For more details on the overall scope of *The Foundry*, please see <http://www.cityofloveland.org/departments/economic-development/the-foundry-downtown-loveland-s-new-horizon>)

Scope and Project Description – Lincoln Avenue (Highway 287 North)

The Lincoln Avenue side of the parking garage is highly visible as it faces Highway 287, the main highway through downtown Loveland. This installation site will be a solid wall surface measuring 30' x 60'. This surface will be conducive to two and three-dimensional artwork. The wall is flanked on both sides by the decorative (aluminum) façade of the parking garage.

Artists will be asked to develop artwork that:

- provides immediate visual impact
- fabricated from any suitable outdoor material
- enhances the overall aesthetics of *The Foundry* development

Timeline

The City will work with the artist/artist team to determine the installation timeline as artwork may be added in phases throughout the construction process. That said, it is highly desirable to have all artwork installed no later than _____, 2018.

Budget

A maximum of \$50,000 has been allocated for the Lincoln Avenue side of the parking garage. This budget includes all design, fabrication, insurance, installation, travel, contingency and incidental costs. The City of Loveland reserves the right to withdraw from the project prior to such time as a contract is formally entered into with the artist. Contract provisions will apply subsequent to the agreement to such by both parties.

Eligibility

The project is open to any professional artist (or artist team) with demonstrated experience in creating signature artwork of a large scale.

Submission Requirements

All applications must be submitted through the CAFÉ website (www.callforentry.org) and must include:

- a preliminary statement of approach for the project which communicates scope and scale
- images of artwork completed within the past seven years highlighting previous accomplishment(s) with public art pieces of similar appropriate scale; Minimum: 5 Maximum :10 images
- 3 professional references
- The Commission is requesting only artist qualifications as demonstrated by professional samples of past works. *Please do not send proposals.*

Artwork Jury Process

From this Request, an artist may be selected directly from the initial applications or the artwork selection panel may elect to interview a limited number of finalists from among the initial applications based upon their past work samples.

- City staff will oversee operations and administer the decisions of the jury panel.

- Artwork Selection Panel: Members of City of Loveland Visual Arts Commission, three Loveland residents, and representatives from Brinkman Partners and the Downtown Development Authority will serve as jurors for the project.
- If multiple semi-finalists are selected, each finalist will present a scaled maquette for the jury panel's review and develop a specific preliminary proposal. A stipend will be paid.
- A detailed budget will be required of artists selected as finalists. The detailed budget must include all expenditures in connection with the execution of the project to ensure the project can be executed as presented.
- One artist will ultimately be selected to develop their design, fabricate and install the artwork.
- Project completion date will be determined jointly by the artist and the Visual Arts Commission; however, the project must be started shortly after the contract has been awarded.
- The selected artist/artist team will enter into a contract with the City of Loveland and will be required to carry general liability insurance of \$1 million, and execute the design as presented.
- The selected artist/artist team will work closely with Cultural Services and Brinkman Partners throughout the project to ensure fabrication and installation requirements are met.

Selection Criteria

The primary criteria for selection:

- Scope of Proposal: Does the proposal show an understanding of the project objective, appropriate scale and desired results?
- Safety and durability of materials utilized
- Aesthetics: Does the artwork meet the aesthetic preferences as stated within the Request?
- Assigned Personnel: Do the person(s) working on the project have the necessary skills? Are sufficient people of the requisite skills assigned to the project?
- Availability: Can the work be completed within the contracted time and on-budget?

Timeline

All applications must be submitted:	Friday, October 6 , 2017
Application Jury Review	October ___ through ___, 2017
Finalists notified by City staff:	Friday, October _____, 2017
Presentation of Finalists Proposal	_____, _____, 2017
Artist(s) enter into a City contract:	_____, November ___, 2017

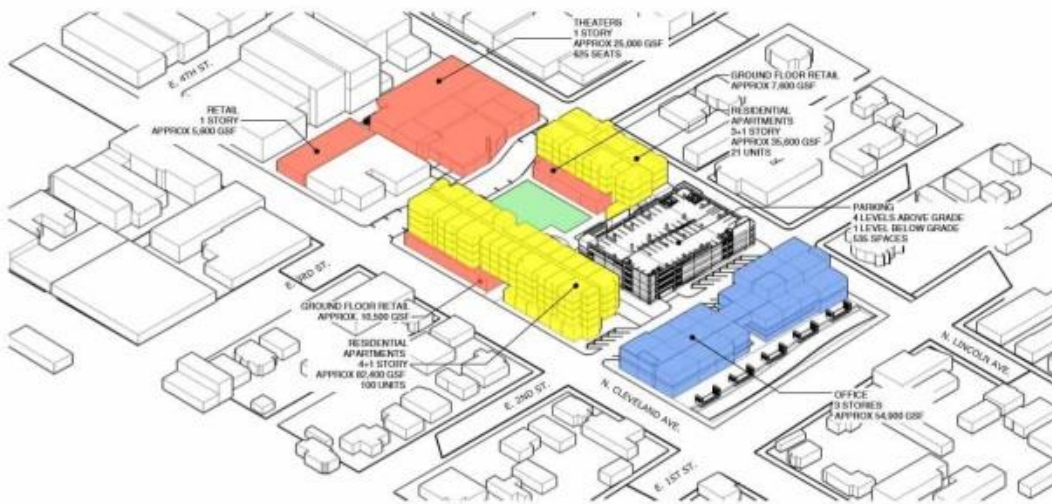
Submission and Contact Information

Suzanne Janssen, Public Art Manager
 (970) 962-2495 / Suzanne.Janssen@cityofloveland.org

(INSERT FAÇADE ELEVATION)



(If used, higher res image needed)



City of Loveland Art in Public Places

The Foundry Project Parking Garage – Second Street

The City of Loveland Art in Public Places is accepting Requests for Qualifications for two sculptural works to be installed in downtown Loveland for *The Foundry* project. Public artwork will be prominently featured throughout this development through permanent installations, annual public art projects and temporary installations.

City Parking Garage (Permanent Installations): Two areas on the City's public parking structure have been identified for public art installations. Artists/artist teams may apply for one or both projects. (Separate applications must be submitted for each site.)

Parking Garage – Second Street Budget: \$100,000
Parking Garage – Lincoln Avenue Budget: \$ 50,000 (See other CAFÉ listing to apply)



Background

In February 2016, Brinkman Partners emerged as the City's choice in a competitive search for downtown redevelopment proposals. Brinkman's subsequent proposal, *The Foundry*, pays homage to Loveland's reputation as a showcase for art, especially sculpture, and celebrates the local foundries where artists from across the world come to cast their work.

The Foundry is a sweeping redevelopment of nearly three city blocks in southern downtown Loveland which will provide a strong foundation for the revitalization of Loveland's historic downtown. Construction began in spring 2017 to transform the City's downtown corridor into a new epicenter of entertainment with movie theater, hotel, apartments, offices, retailers, hotel

and ample downtown parking. (For more details on the overall scope of *The Foundry*, please see <http://www.cityofloveland.org/departments/economic-development/the-foundry-downtown-loveland-s-new-horizon>)

Scope and Project Description – Second Street

The Second Street side of the parking garage will face an adjacent hotel and will be the main entrance into the structure. This installation site measures _____' x _____' and will be the largest surface for public artwork. The structure supports a decorative (aluminum) façade installed in panels. Final artwork will be attached to the existing metal railing structure.

Artists will be asked to develop artwork that provides:

- provides sculptural/3D elements
- provides immediate visual impact
- allows for ample air circulation within the parking structure
- enhances the overall aesthetics of *The Foundry* development

Timeline

The City will work with the artist/artist team to determine the installation timeline as artwork may be added in phases throughout the construction process. That said, it is highly desirable to have all artwork installed no later than _____, 2018.

Budget

A maximum of \$100,000 has been allocated for the Second Street side of the parking garage. This budget includes all design, fabrication, insurance, installation, travel, contingency and incidental costs. The City of Loveland reserves the right to withdraw from the project prior to such time as a contract is formally entered into with the artist. Contract provisions will apply subsequent to the agreement to such by both parties.

Eligibility

The project is open to any professional artist (or artist team) with demonstrated experience in creating signature artwork of a large scale.

Submission Requirements

All applications must be submitted through the CAFÉ website (www.callforentry.org) and must include:

- a preliminary statement of approach for the project which communicates scope and scale
- images of artwork completed within the past seven years highlighting previous accomplishment(s) with public art pieces of similar appropriate scale; Minimum: 5
Maximum :10 images
- 3 professional references
- The Commission is requesting only artist qualifications as demonstrated by professional samples of past works. *Please do not send proposals.*

Artwork Jury Process

From this Request, an artist may be selected directly from the initial applications or the artwork selection panel may elect to interview a limited number of finalists from among the initial applications based upon their past work samples.

- City staff will oversee operations and administer the decisions of the jury panel.
- Artwork Selection Panel: Members of City of Loveland Visual Arts Commission, three Loveland residents, and representatives from Brinkman Partners and the Downtown Development Authority will serve as jurors for the project.

- If multiple semi-finalists are selected, each finalist will present a scaled maquette for the jury panel's review and develop a specific preliminary proposal. A stipend will be paid.
- A detailed budget will be required of artists selected as finalists. The detailed budget must include all expenditures in connection with the execution of the project to ensure the project can be executed as presented.
- One artist will ultimately be selected to develop their design, fabricate and install the artwork.
- Project completion date will be determined jointly by the artist and the Visual Arts Commission; however, the project must be started shortly after the contract has been awarded.
- The selected artist/artist team will enter into a contract with the City of Loveland and will be required to carry general liability insurance of \$1 million, and execute the design as presented.
- The selected artist/artist team will work closely with Cultural Services and Brinkman Partners throughout the project to ensure fabrication and installation requirements are met.

Selection Criteria

The primary criteria for selection:

- Scope of Proposal: Does the proposal show an understanding of the project objective, appropriate scale and desired results?
- Safety and durability of materials utilized
- Aesthetics: Does the artwork meet the aesthetic preferences as stated within the Request?
- Assigned Personnel: Do the person(s) working on the project have the necessary skills? Are sufficient people of the requisite skills assigned to the project?
- Availability: Can the work be completed within the contracted time and on-budget?

Timeline

All applications must be submitted:	Friday, October 6 , 2017
Application Jury Review	October ___ through ___, 2017
Finalists notified by City staff:	Friday, October _____, 2017
Presentation of Finalists Proposal	_____, _____, 2017
Artist(s) enter into a City contract:	_____, November ___, 2017

Submission and Contact Information

Suzanne Janssen, Public Art Manager
 (970) 962-2495 / Suzanne.Janssen@cityofloveland.org

(INSERT FAÇADE ELEVATION)



(If used, higher res image needed)

