

The Foundry

Downtown Loveland's blank canvas will fill quickly



The view southward from the top of the Rialto Theater Center on Fourth Street shows a one-story deep excavation to accommodate the lowest parking garage level, and vertical components of the garage and the Lincoln Building. **Below**, what the project will look like when completed next year.

Backers of downtown Loveland's redevelopment since 2010 have focused on the "south catalyst" – a transformative project covering multiple blocks of southern downtown. That is how the "vision book" for the district first described it.

The south catalyst has a name now, The Foundry, and anyone who has traveled either way on U.S. 287 in downtown Loveland knows that its construction is well underway.

Don't blink: Every trip by the biggest public-private redevelopment project in



(see **Foundry** page 2)



The Foundry site covers two full blocks of southern downtown Loveland, from Backstage Alley south to First Street, with four-story apartment/retail buildings fronting Lincoln and Cleveland Avenues and a full-service hotel on the southern end.

Loveland's history will present something new as three four-story buildings, a five-level parking garage a five-screen movie theater and a spacious public plaza all grow simultaneously.

When all is finished, The Foundry will give Loveland:

- 155 rental apartments in two buildings, one on Cleveland Avenue, the other on Lincoln.
- A 625-seat, five-screen MetroLux first-run movie theater.
- 14,000 square feet of new retail and restaurant space.
- A downtown hotel accommodating 90 to 100 rooms plus meeting space.
- 460 parking spaces in a five-level garage, one level underground.
- A public plaza, wrapped by the buildings, graced with art and presenting plenty of room for community events beginning in Fall 2018.

The pace of construction, especially after years of waiting,

will catch some Loveland residents by surprise. In less than a year, the parking garage will be finished. According to Fort Collins-based builder/developer Brinkman Partners Inc., the City's private partner in the project, here is how the 2018 calendar unfolds with openings at The Foundry:

June:

The parking garage opens, with

A Foundry flyover

Visit The Foundry's project website for a video fly-through of the project by Boulder project designer Oz Architecture. Go to TheFoundryLoveland.com.



a Loveland Police Department substation an ingredient in the plan.

August:

The Lincoln Building welcomes new tenants for its studio, one-, two- and three-bedroom apartments, over ground-level retail space.

October:

The larger Cleveland building, with the same mix of housing and retail offerings, opens. The public plaza, between the Lincoln and Cleveland buildings and fronting Second Street, is available for community events.

November:

First screenings at the MetroLux theater, furnished with electric leather recliners and offering full food and beverage service.

February 2019:

Opening of the hotel, between Lincoln and Cleveland just north of First Street, in time for a Valentine's Day celebration.

City, County, FEMA officials invite public to new highwater sign unveiling

Mayor Cecil Gutierrez and representatives from the City of Loveland, Larimer County and FEMA will gather at 1 p.m. on Saturday, Sept. 9 at Fairgrounds Park, 700 S. Railroad Ave., to jointly unveil new high water signs, marking the level to which waters rose in the 2013 Flood.

That flood event was the most significant and damaging flood Loveland had experienced since the Flood of 1976 that previously devastated the Big Thompson Canyon and areas in Loveland.

City of Loveland leaders and staff want the public to be constantly aware of the dangers of

flooding. These signs will serve as solemn reminders that we live in a flood-prone area and that residents should be flood-aware and flood-prepared.

The City's effort to lessen future flood damage is part of a larger undertaking to envision and create "A Better Big T."

The City's recently-formed River Team is actively working on the Big Thompson River Master Plan that will address issues including flood hazard reduction and mitigation, infrastructure protection, recreation opportunities, ecological and natural areas restoration, improved

water quality, and an overall long term vision for the river corridor.

To learn more about this project go to www.abetterbigt.com. For more information on flood preparedness go to www.readycolorado.com/hazard/flood.



New Hidden Hogback Trail latest addition at Mariana Butte Natural Area

The recently completed "Hidden Hogback Trail," which allows public access north of Mariana Butte, provides hikers and walkers with incredible panoramic views of the Mariana Butte Golf Course and surrounding areas, and plentiful opportunities for wildlife viewing. The new trail runs along the hogback and the Big Thompson River to Rossum Drive near Oxbow Natural Area.

This new leg of the system was constructed by volunteers from the Colorado Addicted Trailbuilders

Society (CATS), a non-profit organization dedicated to trail construction in Northern Colorado. The new Hidden Hogback section is the final piece of the Mariana Butte trail system, which was also built in



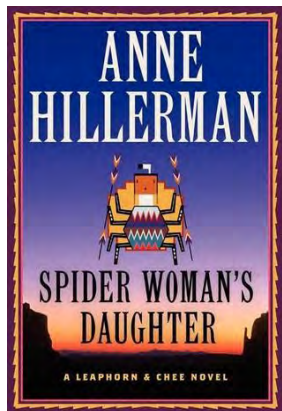
its entirety by CATS.

The now complete Mariana Butte Trail System provides more than 1.25 miles of natural-surface hiking trails. To preserve the landscape, hiking is limited to the established trail and bikes are prohibited. The trail is open daily from sunrise to sunset. Parking, restrooms and concessions are available at the Mariana Butte Clubhouse.

For more information go to www.cityofloveland.org/OpenLands or call 962-2727.

2017 Loveland Loves to Read book is Spider Woman's Daughter by Hillerman

The Loveland Loves to Read program, now in its 14th year, is dedicated to the love of reading, creating forums for book discussions, and bringing notable authors to Loveland to talk about their work.



This year's book, *Spider*

Woman's Daughter, is a continuation of the legendary Joe Leaphorn/Jim Chee mystery series popularized by Hillerman's late father and fellow-author, Tony Hillerman.

The story picks up with a Navajo police officer witnessing a shooting. The novel is filled with compelling characters and lots of suspense against a backdrop of Native-American lore and culture.

Events:

- Readmore Adult Book Group to discuss *Spider Woman's Daughter* on Sept. 5 and 6.

- Hillerman to speak at the Rialto, 7 p.m., Mon., Sept. 18. Tickets \$5 at the Rialto box office or at rialtoloveland.ticketforce.com.
- Book discussion/luncheon with Hillerman, Sept. 19, Sylvan Dale Ranch. Shuttle from Chilson included with \$35 ticket.
- 1 p.m., Sept. 20, Dr. Peter Jacobs, CSU Professor Emeritus, speaks on Native American art and culture.
- 7 p.m., Sept. 21, Loveland Public Library, "The Thief of Time," Robert Redford's movie version of a Leaphorn/Chee mystery.

More information is available at friendsofthelovelandlibrary.org.



VOLUNTEERS NEEDED! Environmental Educator Training

September 5, 6 or 7, from 9am-1pm

No experience necessary! Free!

Training to lead short, hands-on sessions with schoolchildren at small group stations.

Fall & spring programs at River's Edge Natural Area.

Register today at:

www.CityofLoveland.org/openlands

Or call Michele Van Hare, Coordinator at (970) 962-2643

Harvest Bazaar

a fundraising event for the Senior Center & the Chilson Senior Advisory Committee

Saturday, September 23
9:00am-1:30pm

Enjoy hearty soups, chili & delicious pies!
Browse the craft tables for handmade gifts...just in time for the holidays!

Meal Deal Soup or Chili, Pie & Drink
\$5 in advance, \$6 at the door
Served from 10:30am-1:00pm
Coffee & Pie: 9am-1pm for \$2

Produce Wanted! Consider donating your fall produce for our produce sale!
Accepted beginning 9/20



700 E 4th Street • Loveland • 970-962-2783



700 S Railroad Ave Pavilions #1 & #2

SUNDAYS • 9:00am-1:30pm
June 25-September 24



Info: CityofLoveland.org/FarmersMarket

FALL BACK INTO FITNESS!



As part of our 30th Anniversary Celebration, we've got a DEAL for YOU!

Purchase a 10-Visit Pass and receive an 11th visit FREE!

This offer is valid on 10-Visit passes purchased September 18-24, 2017. You must purchase at the Chilson front desk. Limit ONE per household member.

Questions? Call (970) 962-2FUN

WORKHARD...FEELGOOD!

700 E 4th St • Loveland • CityofLoveland.org



SYMPHONY! Music Presentation & Lecture Series

Sept. 11th & 25th
Erion Room
6:30-7:30pm

PUTTING YOUR GARDEN TO REST

CSU Master Gardeners

Sept. 27th, 2017
Gertrude Scott
1:00-2:00pm



 Loveland
Public Library
Where you can't
lovelandpubliclibrary.org

New fall classes at the Chilson Rec Center



Ages 2-6:
Dance Basics/PetiteBallet
Tot Music
Mini Art Masters

Ages 5-12:
Kids Yoga & Kids Pilates
Chess and STEM
Youth Ballet
Youth Art

Ages 12 and up:
Family Art &
Adult Ballet
Theater/Writing for
Stage & Screen
Cooking: Thai, Indian &
Gluten Free

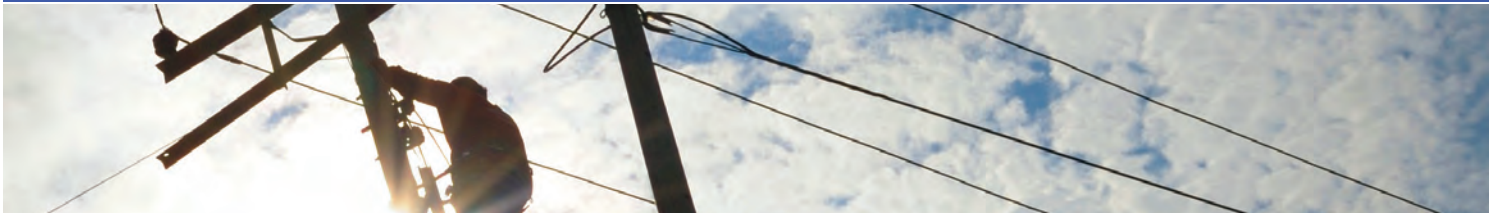
For more information go to
cityofloveland.org/WebTrac
or call 962-2446.



City Update is a monthly publication of the City of Loveland. Residents receive City Update according to their utility billing cycle. Timeliness of the information may be affected by recipients' billing schedule. City Update is also available around the first of every month on the City's website at www.cityofloveland.org. Your comments are welcome. Please call 962-2302, or email Tom.Hacker@CityofLoveland.org. The City of Loveland is committed to providing equal opportunity for citizens and does not discriminate on the basis of disability, race, color, national origin, religion, sexual orientation or gender. The City will make reasonable accommodations for citizens in accordance with the Americans with Disabilities Act. For more information, please contact the City's ADA Coordinator at 962-3319.

Follow us on
Facebook,
Twitter
and
YouTube





BUILDING A FLEXIBLE, RESILIENT GRID

Every year, Loveland Water and Power (LWP) earmarks roughly 40-50 percent of the Power Division capital budget for system improvements to increase reliability and prepare for Loveland's growing population and business influx.

The projects range from increasing system capacity of substations and electrical lines to improving reliability by adding loops and ties between circuits. The loops and ties add additional lines so that if an outage occurs, crews can isolate the problem and feed power to a neighborhood from a different direction and restore power much faster. Looping power sources also helps when it's time to do maintenance. In most cases, customers

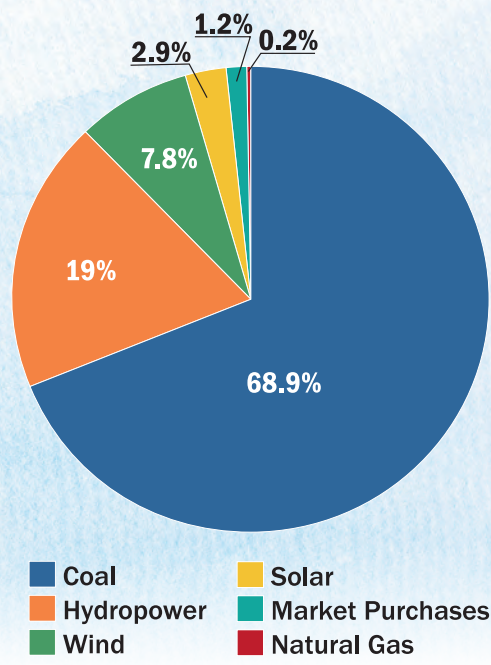
don't see any interruption in service. LWP is also adding additional infrastructure to older neighborhoods in town that are fed by a single circuit. Back in the day, utility best practice did not require a neighborhood to have a looped connection. Newer design practices ensure that residential areas are fed from multiple directions so that if a problem occurs; the power can be switched to the alternate source without interrupting service. Crews are spending this summer upgrading service in neighborhoods near McKee Medical Center, North Wilson and downtown.

LWP is also taking advantage of the Foundry construction in lower downtown to underground lines and

increase circuit connections, which should increase reliability throughout the city.

LWP is also answering the call on the east side of Loveland, adding infrastructure to areas we have never served before to accommodate growth and new construction. The creep of economic development has stretched out to County Road 30 and beyond, so LWP is stretching out east to serve new businesses and installing infrastructure that will be ready as our city grows.

LOVELAND'S PROJECTED SOURCES OF ENERGY IN 2017



POWER FACTS



LWP has a peak electrical use of 150 MW in the summertime and 101 MW in the wintertime.



In 2016, 69% of the Power Division's revenue went directly towards purchasing power.



LWP maintains over 143 miles of overhead power lines and 532 miles of underground power lines.



The number of residential solar installations in Loveland has grown by **170%** since 2015.



MAIN SWITCHBOARD
970-962-3000

UTILITY BILLING
970-962-2111

visit us online...
cityofloveland.org/LWP



Since its inception, Platte River Power Authority has demonstrated a strong commitment to environmental stewardship.

Platte River continuously reviews and improves environmental performance, policies, and sustainable business practices. In upholding that value, the land around Rawhide Energy Station is

home to two herds of American bison. The bison serve as Platte River's environmental ambassadors, demonstrating that wildlife can coexist in harmony with responsibly operated generation facilities.

The herd was purchased through an "Adopt-a-Buffalo" program proposed by Platte River's first general manager Albert J. Hamilton and approved by Platte River's Board of Directors. Herd counts have ranged from 20 to 51. As of July 2017, the lower herd has 19 animals plus Sarge; the upper herd has 22 animals plus Jack. There are currently two herd bulls—Cold Creek Bison "Jack" (born in 2012) and Sarge (born in 2012). Each bull weighs over 2,000 lbs.

Trained and certified Platte River employees are responsible for herd management and provide water, supplemental feed and rotate the herds from pasture to pasture. Their duties also include assisting the herd veterinarian, Dr. Robert Mortimer, DVM, Colorado State University, when needed.

Since 1986, Platte River has entered numerous animals in the National Bison Association (NBA) Gold Trophy Show and Sale at the National Western Stock Show that is held each January. These animals have received many awards in addition to many honorable mentions.

Platte River Power Authority is the not-for-profit wholesale electricity generation and transmission provider that delivers safe, reliable, environmentally responsible, and competitively priced energy and services to Loveland Water and Power for delivery to its customers. The City of Loveland co-owns Platte River with the cities of Fort Collins and Longmont; and the Town of Estes Park.

EMPLOYEE SPOTLIGHT



STEVE FALK

Journey Meter Technician

Steve Falk's most interesting job was detasseling corn in Iowa during the summer as a youngster. After 31 years with the City of Loveland, most recently as a Journey Meter Technician for Loveland Water and Power, Steve spends his days problem solving, keeping track of new technology and providing customer service to more than 75,000 power customers. Falk has seen a lot of change in his more than three decades of work with Loveland. "Mostly the number of people. When I started with the Power Division we were located on 5th Street and served just over 35,000 people," Falk said. "The job has gotten much more technical. The metering in it of itself has changed so much that it is now a computer under glass and has to offer an array of function for the customer and utility." When Steve is not working he most enjoys spending time with his wife and catching up with his three children. "I have gained a thankfulness that I am able to have a job like this and work for the City and its customers."

We are thankful for you and your dedication to the Loveland Community Steve!