



## Big Thompson plan: ‘Science-based, community-driven’



**A camera-equipped** drone flying westward up the Big Thompson River corridor in early May caught this view of the river slipping by gravel excavation ponds, under the Wilson Avenue bridge, and passing beneath the newly placed bicycle-pedestrian bridge that was destroyed in the 2013 Flood.

### ***‘River Team’ and friends will seek community input***

Most of each year, the Big Thompson River is a thin, blue-brown braid that winds generally west to east on its 9-mile course through Loveland.

The Big Thompson is a river with rhythm. Every year it swells in late May and early June with the melting snowpack that has built during the winter and early spring in the high mountains 25 straight-line miles west of Loveland. By fall, all that snow is down and the river becomes a trickle.

The “June Rise,” as the annual spring runoff is called by river watchers, is the perfect time to launch a vast study of the Big Thompson’s path through the City. **\$250K launches plan**

A busy group of engineers, planners, wildland experts and others on the City staff, who came together as the “River Team” in the aftermath of the 2013 Flood, asked for and received a \$250,000 federal disaster relief grant to pay for the detailed examination. Their work will culminate next fall in the Big Thompson River Corridor Master Plan.

“The list of things we hope to accomplish through this planning

effort is a long one,” said project manager Chris Carlson, a civil engineer in the Public Works Department’s Stormwater Division.

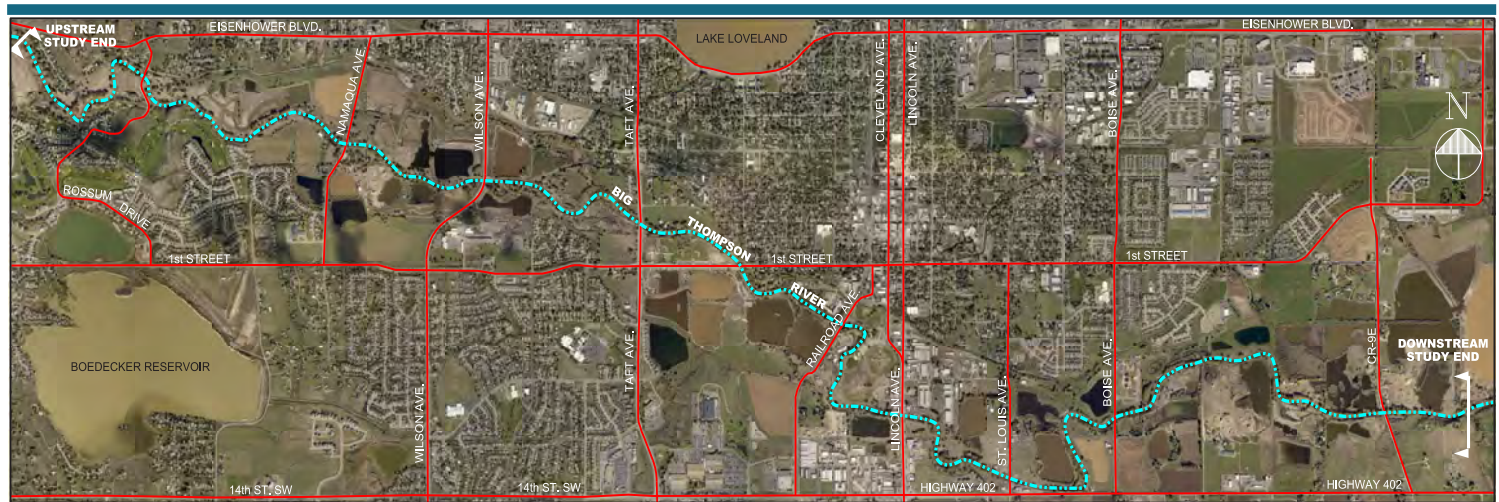
“A key piece of our approach is working with the community to define a long-term vision for the river corridor, one that will endure for decades into the future. We hope to get as much community involvement and input into this plan as possible. It will be science-based, but community-driven.”

#### **Public-private team**

While City employees lead the study team, experts from elsewhere in Colorado will join them as they look at the river in all its aspects. They will watch the trout that dart

(see **BT Master Plan** page 2)





From its western boundary at the Morey Wildlife Reserve (upper left), the Big Thompson River corridor study area winds southeastward to a point just east of County Road 9. For a digital, and much more readable, version of this map, visit [www.cityofloveland.org/RiverPlan](http://www.cityofloveland.org/RiverPlan).

though its course, observe wildlife that inhabit its flanks, talk with people who like to play in it, and count the ways it serves as one of the City's most visible aesthetic amenities.

They will also analyze mile-by-mile how it can threaten Loveland, and damage the City as it did in catastrophic ways twice in 40 years, and devise ways to cut into that threat.

## More than flood control

Making the river and its course more resilient in the face of future floods is, after all, the basis for the grant awarded through a federal disaster recovery program. However, the reach of the planning work is far greater. Environmental health, recreation opportunities and aesthetic enhancements will take high profiles as the planning team works.

"The Big Thompson River Corridor is an amazing but sometimes under-utilized resource for the citizens of Loveland," said Andrew Earles, vice president of water resources with Wright Water Engineers, the lead consultant on the project.

"It has broad, undeveloped floodplains, trails, parks and open space over much of the reach we will be planning. It has its challenges, with diversions and seasonal dry areas, but despite that it supports diverse populations of fish and wildlife. And, the people who know it best recognize that it gives them

natural space and habitat in the midst of urban development." **River's 'touch points'**

The planners will spend all late spring, summer and early fall looking closely at places where the river can flood adjacent land along the corridor, and plan strategies to minimize damage. However, they will pay as much attention to "touch points" along the Big Thompson, places where people who live in or visit Loveland connect with the river.

## Planning Partners



Chris Carlson

**Project Manager Chris Carlson**, civil engineer in the City's Public Works Department, is a mainstay of the City's "River Team" – the informal name for key City employees engaged in continuing work to recover

from the 2013 Flood. Chris holds a BS in civil engineering from Colorado State University.



Andrew Earles

**Lead consultant Andrew Earles** is vice president of water resources at Denver-based Wright Water Engineers Inc., and has applied his expertise in hydrology and hydraulics to stormwater and flood mitigation projects throughout Colorado and the West. He holds master's and doctorate degrees in Civil Engineering from the University of Virginia.

Those river-minded people include visitors to parks, natural areas and even golf courses, where players might fish an errant ball from the shallows. They include 60-or-so private landowners whose property either has Big Thompson frontage or is near enough to be affected by the river's annual ups and downs.

The people who touch the river, and even those who would if they knew more about it, are the reasons the members of the project team put such a high premium on public involvement as they work.

"Public participation and input is absolutely critical to this effort so that the citizens of Loveland can help to shape the future vision for the corridor," Earles said. "Our project team is so excited to work with the City, and the people who live here, as we all work together to develop that vision."

## Ways to Engage

Learn much more about the Big Thompson Corridor Master Plan project at [www.cityofloveland.org/RiverPlan](http://www.cityofloveland.org/RiverPlan). The site will offer:

- A detailed project description
- Maps of the study area
- Timeline for planning work

Planning team members will be at community events all summer, answering questions and gathering input. Look for them at Foote Lagoon concerts, the Cherry Pie Festival, the Corn Roast and other events. A complete schedule is on the website listed above.

# Loveland Parks & Recreation invites residents to experience Power of Play

Get ready to “get your play on” this July with Loveland Parks and Recreation and the National Recreation and Park Association (NRPA).

Since 1985, America has celebrated July as the nation’s official Park and Recreation Month.

This year it’s all about discovering the Power of Play in Loveland’s many wonderful parks and recreation facilities.

Created by NRPA, Park and Recreation Month specifically highlights the vital and powerful role local parks and recreation play in conservation, health and wellness, and social equity efforts in communities all across the country.

From learning a new sport like pickleball to meeting friends on the playground, Loveland’s parks and recreation facilities are the places where everyone can play and have fun, regardless of age or ability.

In Loveland, the City’s Parks and Recreation Department has multiple events planned throughout the month at various facilities including Fairgrounds Park, Mehaffey Park, North Lake Park, Winona Pool, Cattail Creek

Golf Course and Chilson Recreation Center. Events include free classes, cooking and sport demonstrations, buy-one get-one free offers, giveaways and more.

“July is the perfect time to highlight all the benefits parks and recreation provides right here in Loveland,” said Elizabeth Kayl, Director of Loveland Parks and Recreation. “Our local parks and recreation facilities directly contribute to reduced obesity rates, an improved ecosystem and



increased property values.”

Loveland Parks and Recreation is leading initiatives and providing opportunities for people of all ages to achieve healthier lifestyles, promote and understand nature and conservation, as well as bring the community closer through a variety of programs and services.

Whether through classes at Chilson, environmental education programs at open lands sites, youth sports, swimming at Loveland Swim Beach or hiking the recreation trail, quality of life in Loveland is made better through parks and recreation.

NRPA and Loveland Parks and Recreation are encouraging everyone to get out there to experience the Power of Play for themselves

Learn more about the exciting Park and Recreation Month activities planned for Loveland at [www.cityofloveland.org/parksrecmonth](http://www.cityofloveland.org/parksrecmonth).



## North Taft Avenue bridge will undergo construction to expand to four lanes

The North Taft Avenue bridge that runs over the Big Barnes Ditch will soon be widened and reconstructed, bringing the roadway up to today’s 4-lane standard.

According to Shawn Fetzer, City engineer, who is overseeing the project, the last time the bridge was widened was in 1973 and parts of the bridge are older than that, he said.

The project will begin on June 19 with the upgrade of the alley to the west of North Taft between the ditch and 11th Street. Widening of North Taft from Gard Place to West 11th Street will also begin at that time.

The demolition and reconstruction of the bridge cannot begin until the Big Barnes Ditch

stops running water, which is projected to be in the beginning of July.

The new finished roadway will have four lanes of travel and include a center turn lane, bike lanes and sidewalks on both sides of the new bridge and road.

Although the road will remain



open for the duration of the work, traffic will be restricted to one lane in each direction. Delays are expected and alternate routes are advised.

Once complete the new bridge and roadway will improve safety for motorists, cyclists and pedestrians. Construction is expected to take five months.

This project is part of the City’s five-year Capital Improvement Project and is being paid through capital expansion fees and excess Tabor funds as well as a \$736,000 in federal grant money. The total cost for the work is \$1.7 million.

For more information go to [www.cityofloveland.org/TaftAvenue](http://www.cityofloveland.org/TaftAvenue), email [Shawn.Fetzer@cityofloveland.org](mailto:Shawn.Fetzer@cityofloveland.org) or call 962-2636.



# SUMMER CINEMA AT THE RIALTO

JUNE - JULY, 2017

Sunday Classic Matinees

Tuesday Family Cinema

Replay Wednesdays

Date Night Fridays

**RIALTO THEATER**  
LOVELAND ARTS AND CULTURE

228 East Fourth Street • Loveland, CO 80537 • (970) 962-2120 • rialtotheatercenter.org



## BlowUP

INFLATABLE CONTEMPORARY ART

JUNE 9 – AUGUST 20, 2017

**Bedford Gallery**

an independent contemporary arts

ART WORKS

National Endowment for the Arts

Blow Up: Inflatable Contemporary Art was organized by Carrie Lederer, Curator of Exhibitions, Bedford Gallery, Leshner Center for the Arts, Walnut Creek, CA.

This exhibition was made possible by a grant from The National Endowment for the Arts and Colorado Creative Industries.

**LOVELAND MUSEUM**  
LOVELAND ARTS AND CULTURE

503 N. Lincoln Avenue, Loveland, CO 80537

(970) 962-2410

[www.lovelandmuseumgallery.org](http://www.lovelandmuseumgallery.org)

**RIALTO THEATER**  
LOVELAND ARTS AND CULTURE

# BROADWAY Bootcamp

**A 2-week day camp taught by Broadway stars!**  
**July 31 – August 11**  
Monday – Friday, 9 am – 3 pm  
Grades 6 - 12

Learn more and register online:  
[www.rialtotheatercenter.org](http://www.rialtotheatercenter.org)

**RIALTO THEATER CENTER**  
228 East Fourth Street • Loveland, CO 80537 • (970) 962-2120 • [rialtotheatercenter.org](http://rialtotheatercenter.org)

## Program helps with repairs for qualified homeowners

Loveland and Larimer County residents may qualify for assistance with home improvements and repairs through the Loveland Housing Authority Home Improvement Program.

The program assists homeowners



**A construction crew** repairs a roof for a homeowner through the Loveland Housing Authority's Home Improvement Program.

that earn no more than 80 percent of the area median income of \$62,550 for a family of four.

Homeowners can access flexible term loans of a zero to three percent interest rate with up to 30-year repayment terms. The terms are based upon income and eligibility is not based on credit score.

The program focuses on health, safety, energy efficiency and accessibility.

Soon, owners of manufactured homes in parks will be able to take advantage of a similar program.

Qualified contractors are needed.

For more information or to be listed as a preferred contractor, call 667-3232 or go to [www.lovelandhousing.org](http://www.lovelandhousing.org).



# JULY 4TH CELEBRATION!

at North Lake Park - 29th St & Taft Ave

- ★ Music ★ Entertainment
  - ★ Vendor Booths ★ Dancing
  - ★ Fireworks Show
- @ 9:17pm over Lake Loveland!

**For more info: [CityofLoveland.org](http://CityofLoveland.org)**

**No parking in North Lake Park**

Please park in the surrounding neighborhoods or in paid parking at Loveland High School.

An event map will be posted online as the event date approaches.

City Update is a monthly publication of the City of Loveland. Residents receive City Update according to their utility billing cycle. Timeliness of the information may be affected by recipients' billing schedule. City Update is also available around the first of every month on the City's website at [www.cityofloveland.org](http://www.cityofloveland.org). Your comments are welcome. Please call 962-2302, or email [Tom.Hacker@CityofLoveland.org](mailto:Tom.Hacker@CityofLoveland.org). The City of Loveland is committed to providing equal opportunity for citizens and does not discriminate on the basis of disability, race, color, national origin, religion, sexual orientation or gender. The City will make reasonable accommodations for citizens in accordance with the Americans with Disabilities Act. For more information, please contact the City's ADA Coordinator at 962-3319.

Follow us on  
Facebook,  
Twitter  
and  
YouTube



# MAKE THE SWITCH TO GREENSWITCH!

## A RENEWABLE ENERGY PURCHASE PROGRAM

Renewable energy is energy that comes from natural sources like solar, wind, geothermal, biomass generation or small hydroelectric systems.


Currently, Loveland receives its renewable energy from wind turbines. Loveland Water and Power purchases this clean energy from Platte River Power Authority, Loveland’s wholesale energy provider, for the City’s GreenSwitch program.

GreenSwitch enables Loveland power customers to purchase electricity that’s been

generated from clean, renewable sources. GreenSwitch is sold in 100 kilowatt-hours blocks for an additional \$2.80 each. Many or just a few blocks can be purchased to meet specific energy requirements. Residents, small businesses or large corporations can make the switch to clean, renewable energy.


The 2016 and 2017 product content labels list the content mixes for Loveland’s renewable electricity last year, and the prospective content mix for the current year. The Renewable Mix contains the product mix that GreenSwitch customers receive.

To join GreenSwitch go to...  
[cityofloveland.org/GreenSwitch](http://cityofloveland.org/GreenSwitch),  
call 962-2111, or pick up an application at the City’s Utility Billing office, 500 E. Third St.



### Home Efficiency Upgrades

Discover Your Home's Potential  
Audits • Advice • Rebates




Loveland Water and Power’s home efficiency audit is more affordable than ever (a \$300 value).

## Schedule A Home Efficiency Audit For Only \$60

Blower Door • Infrared Camera • Safety Testing

877-981-1888  
[efficiencyworks.co](http://efficiencyworks.co)



PRODUCT CONTENT LABEL<sup>1</sup>

GreenSwitch is sold in blocks of 100 kilowatt-hours (kWh). This table provides the renewable resource mix in GreenSwitch in 2016 as well as the projected resource mix in 2017.

Green-e Energy Eligible New<sup>2</sup> Renewables in GreenSwitch

	2016 - Historic		2017 - Prospective	
	%	Generation Location	%	Generation Location
Wind	6%	Colorado	100%	Wyoming
Wind	94%	Wyoming		

1. Prospective 2017 figures reflect the renewables that we have contracted to provide. Actual figures may vary according to resource availability. We will annually report to you before August 1 of next year in the form of a Historic Product Content Label the actual resource mix of the electricity you purchased. Historic 2016 figures reflect the power delivered to GreenSwitch customers in 2016.
2. New Renewables come from generation facilities that first began commercial operation within the past 15 years. This product includes generation from a facility that is approved for extended use by Green-e Energy.”

For comparison, the current average mix of resources supplying Loveland Non-Renewable Subscribers includes: Coal (69.9%), Natural Gas (0.5%), Hydroelectric (18.8%), Renewables (8.8%), and Other (2%)\*. This resource mix was provided to Loveland by Platte River Power Authority for the year 2016.

The average home in the United States uses 909 kWh per month. [Source: U.S. EIA, 2013]

For specific information about this electricity product, please contact Loveland Water and Power, 970-962-3000, [cityofloveland.org/GreenSwitch](http://cityofloveland.org/GreenSwitch).

\*Other refers to unspecified purchases.



GreenSwitch is Green-e Energy certified, and meets the environmental and consumer-protection standards set forth by the nonprofit Center for Resource Solutions. Learn more at [www.green-e.org](http://www.green-e.org).





MAIN SWITCHBOARD  
970-962-3000

UTILITY BILLING  
970-962-2111

visit us online...  
[cityofloveland.org/LWP](http://cityofloveland.org/LWP)



## TIME TO TUNE YOUR LAWN WITH A FREE SPRINKLER INSPECTION!

Are you struggling to wrap your head around that hefty summer water bill? Loveland Water and Power and the Center for ReSource Conservation can help with a free irrigation inspection. We'll run a few tests to check your sprinklers' efficiency and diagnose any problems your system might have. At the end you'll receive a customized watering schedule designed to reduce water usage and keep your lawn healthy and beautiful all summer long!

Inspections last about 90 minutes, but could help you save thousands of gallons of water each year. It's easy to sign up and get long-lasting and money-saving results. Simply call (303) 999-3824 or sign up at [conservationcenter.org/sprinkler](http://conservationcenter.org/sprinkler) to schedule.



## YOUR OLD REFRIGERATOR or FREEZER IS COSTING MORE THAN YOU THINK.

That's why we're offering recycling double rebates through the end of June 2017.

Get \$70 for recycling your refrigerator or freezer (normally \$35)

970-962-3000 | [cityofloveland.org/rebates](http://cityofloveland.org/rebates)



Efficiency Works™  
Home



## Community Stewardship Lecture Series

— creating a sustainable culture

High Plains Environmental Center has partnered with Loveland Water and Power to present a free lecture series you won't want to miss. Every other month on the second Tuesday at 6 p.m. residents can learn from experts in the fields of horticulture, sustainability and more. Pre-registration is required.

Go to [cityofloveland.org/LWPLectures](http://cityofloveland.org/LWPLectures)  
for more information and to register.

## Upcoming Lectures

**JULY 11**

Smart Homes

**SEPT 12**

Film  
Screening

**NOV 14**

Birding