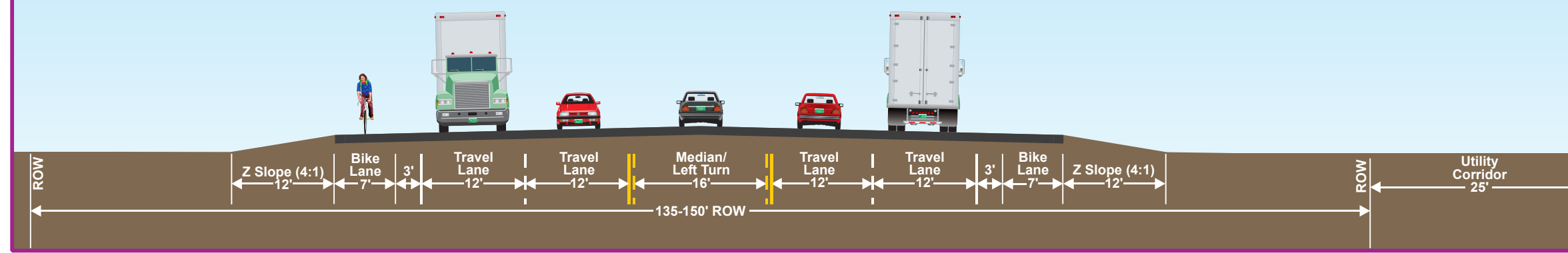


SH 402 from CR 13C (St. Louis Avenue) East to the I-25 Interchange - Rural Cross Section for Action Alternatives



Ultimate Cross Section

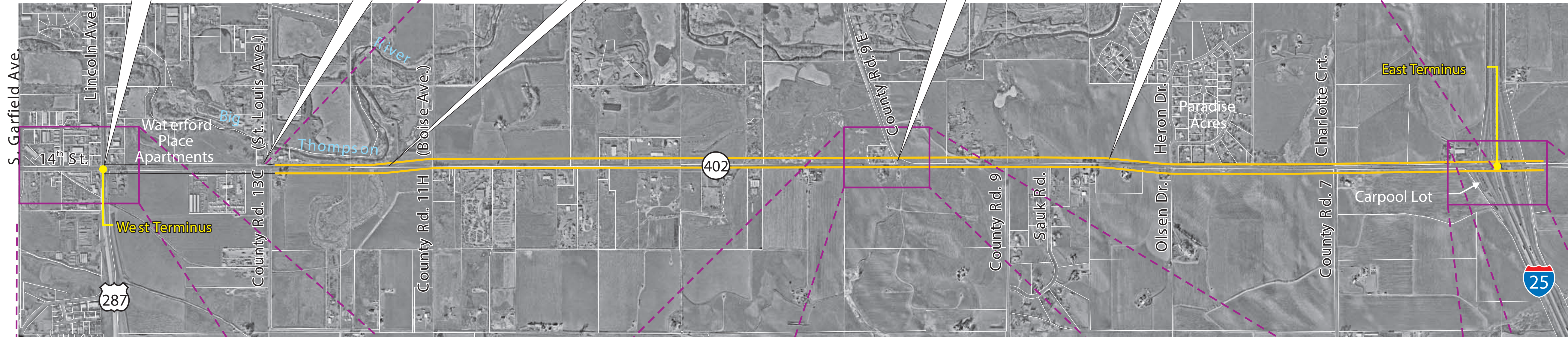
1 Starting at the western terminus of SH 402 and US 287, the Meander Alternative was designed to include necessary intersection improvements, such as turn lanes, to accommodate 2030 traffic.

2 East of CR 13C, the alignment shifts to the south side, away from the Big Thompson River.

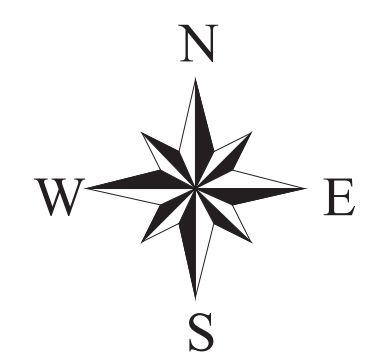
3 West of CR 11H (Boise Avenue) the alignment shifts back to the north side and remains along the north side until Heron Dr./Olsen Dr.

4 At CR 9E, the intersection will be straightened to improve sight distances.

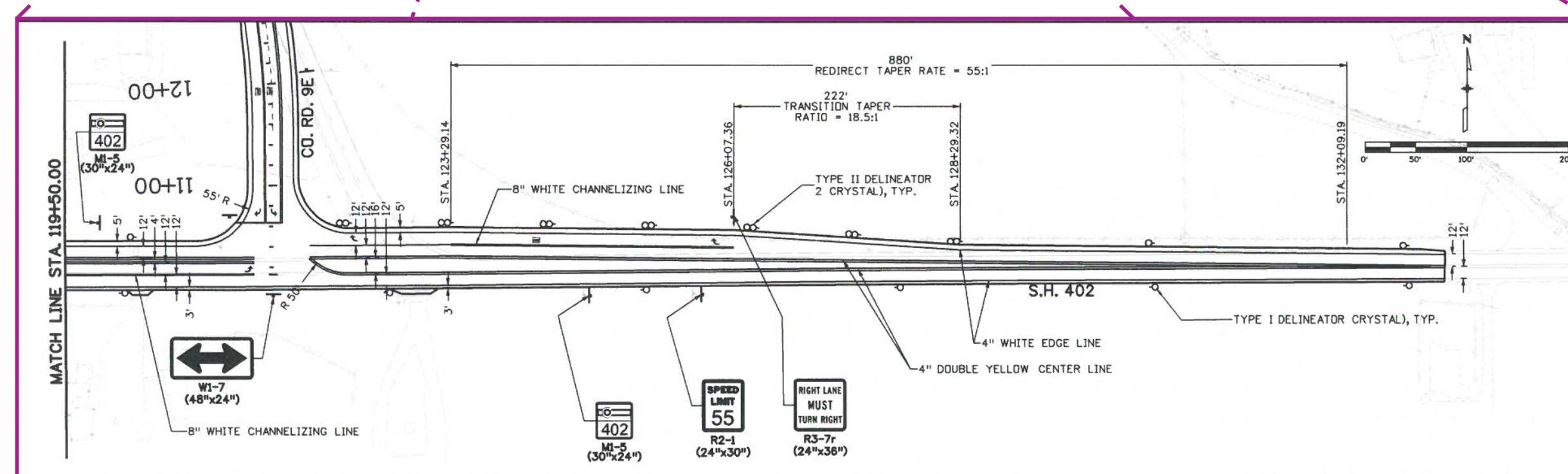
5 The Meander Alternative shifts slightly south again and then gradually returns to the existing alignment where it ends at the I-25 interchange.



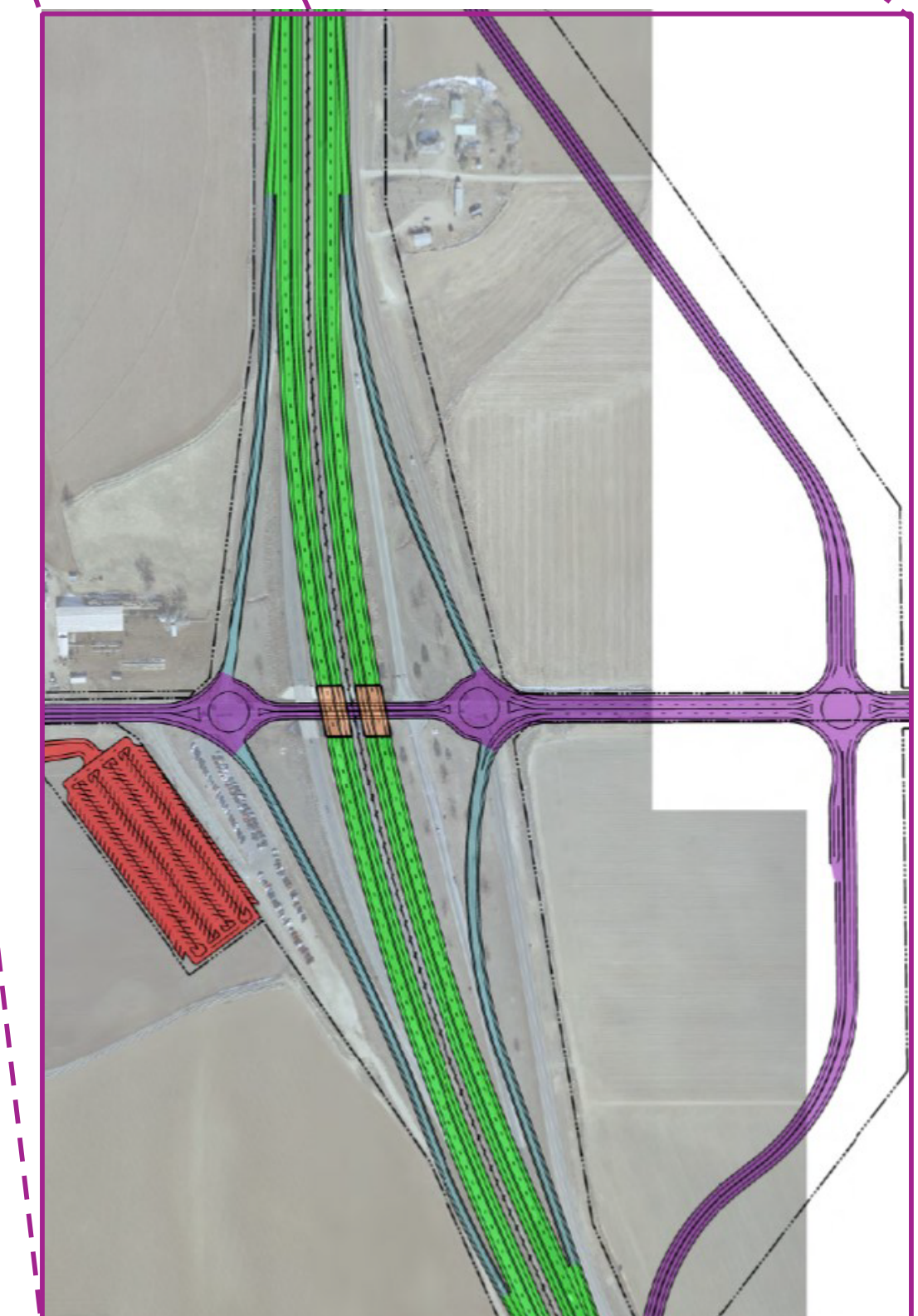
- Property Parcel Boundaries
- Existing Right-of-Way
- Proposed Meander Alternative Right-of-Way
- Lane Details



SH 402 and US 287 Intersection



CR 9E and SH 402 Intersection



SH 402 and I-25 Interchange

Proposed Transportation Infrastructure Improvements

