



Lantz-Boggio Architects, P.C.

**MIRASOL
COMMUNITY**
LOVELAND, COLORADO

GENERAL DEVELOPMENT PLAN

OWNER:

CITY OF LOVELAND HOUSING AUTHORITY
375 W. 37TH STREET
LOVELAND, CO 80538
Ph: (970) 667-3232
Fax: (970) 278-9904

ARCHITECT:

LANTZ-BOGGIO ARCHITECTS, P.C.
5650 DTC Parkway, Suite 200
Englewood, Colorado 80111
Ph: (303) 773-0436
Fax: (303) 773-8709

CIVIL ENGINEER:

CORNERSTONE ENGINEERING
437 SOUTH ST. VRAIN
ESTES PARK, CO 80517
Ph: (970) 586-2458
Fax: (970) 586-2459

| No. | Date | Description |
|----------------------|-----------------|--|
| GDP First Amendment | October 5, 2010 | Increased density and maximum number of units, added product types of adult daycare, assisted living and multifamily attached, modified building height and off-street parking ratio |
| GDP Second Amendment | March 26, 2012 | Adjust parking ratio and increase density and number of units in area D and E |
| GDP Third Amendment | June 22, 2016 | Added additional 5+- acres to the north |

Issued For:

| No. | Date | Description |
|-----|------------|--------------------------------------|
| 1 | 07.10.2012 | City of Loveland Review Comments |
| 2 | 07.26.2012 | Water/Wastewater Comments 07.25.2012 |
| 3 | 08.17.2012 | Planning Redlines |
| 4 | 11.7.2012 | City Council Conditions of Approval |

Seals:

LBA Project Number:
2357.00

Date:
MARCH 26, 2012

Sheet Title:

**GDP ELEVATIONS &
DETAILS**

Sheet Number:

5 OF 6

1999 Copyright



**CONCEPTUAL ELEVATION
INDEPENDENT LIVING APARTMENT BUILDING**

SCALE: 0 10'



**CONCEPTUAL ELEVATION
MAINTENANCE BUILDING**

SCALE: 0 10'



**CONCEPTUAL ELEVATION
COMMUNITY CENTER**

SCALE: 0 10'



**CONCEPTUAL ELEVATION
DUPLEX UNIT**

SCALE: 0 10'



TYPE A



TYPE B

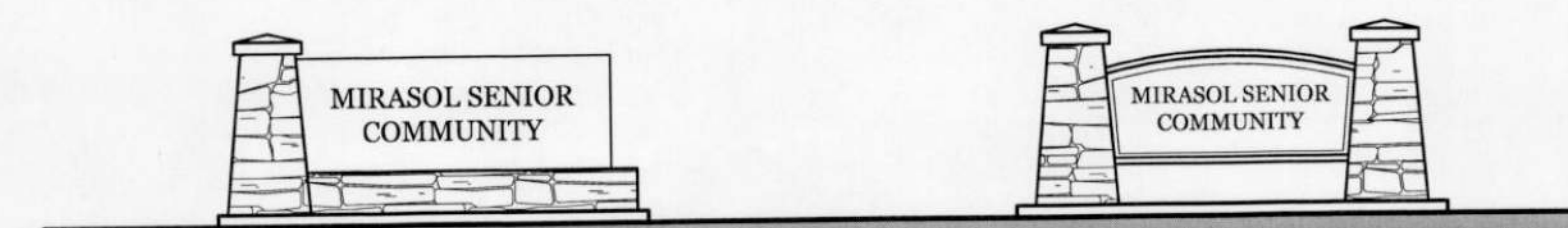
**CONCEPTUAL ELEVATION
SINGLE FAMILY DETACHED HOMES**

SCALE: 0 10'



**CONCEPTUAL ELEVATION
SINGLE FAMILY DETACHED HOME W/2 CAR GARAGE**

SCALE: 0 10'



**CONCEPTUAL ELEVATION
SITE SIGNAGE**

SCALE: 0 4'

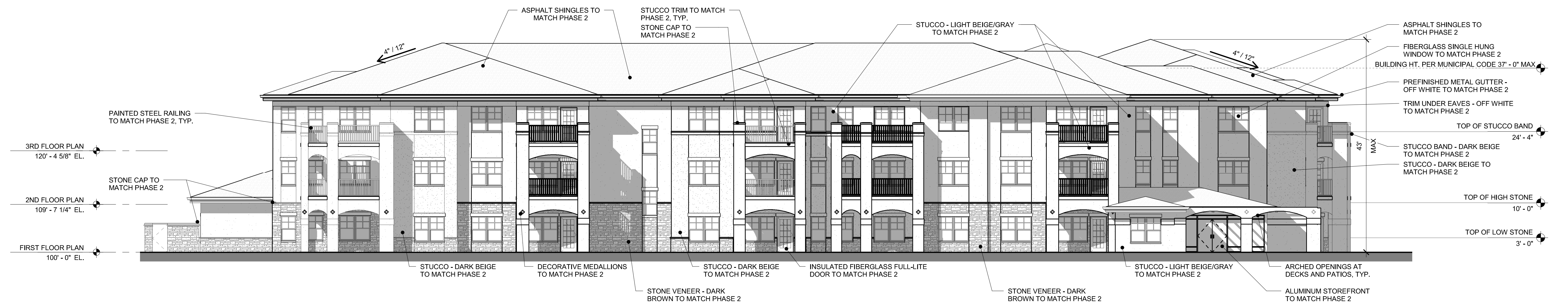
MIRASOL COMMUNITY Third Amendment General Development Plan

Owner:
 Loveland Housing Authority
 375 W 37th Street
 Loveland, CO
 Ph: (970) 667-3232

Architect:
 ALM2S
 712 Whalers Way
 Building B, Suite 100
 Fort Collins, CO 80525
 (970) 223-1820

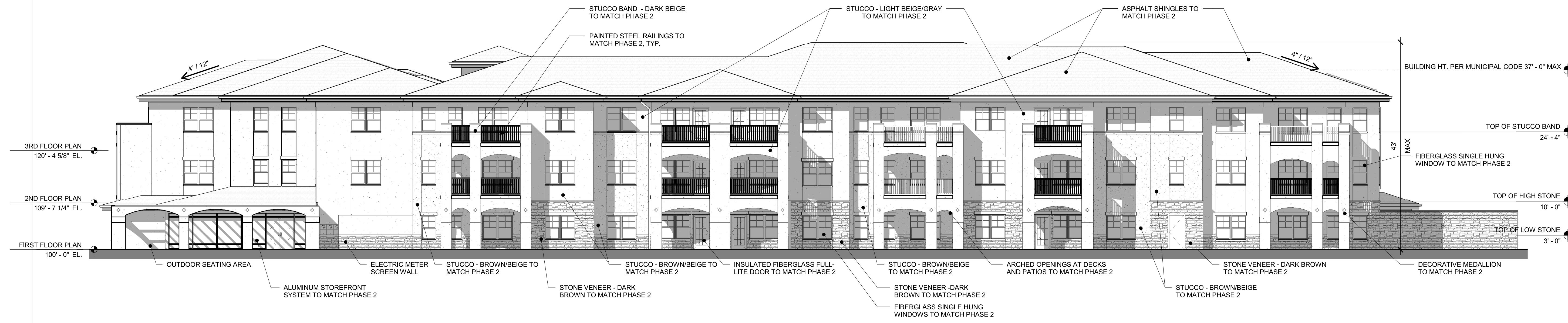
Civil Engineer:
 Galloway
 3760 E. 15th Street, Suite 202
 Loveland, CO 80538
 (970) 800-3300

Landscape Architect:
 Russell + Mills Studios
 141 S. College Ave, Suite 104
 Fort Collins, CO 80525
 (970) 484-8855



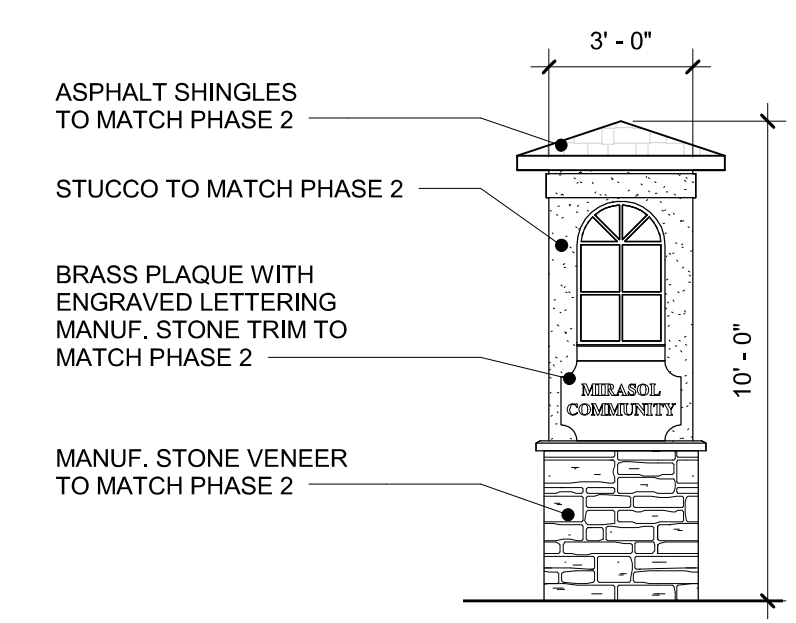
SENIOR HOUSING BUILDING - AREA H NORTH ELEVATION

SCALE: 3/32" = 1'-0"



SENIOR HOUSING BUILDING - AREA H WEST ELEVATION

SCALE: 3/32" = 1'-0"



MONUMENT SIGN
 SCALE: 1/4" = 1'-0"

NOT FOR CONSTRUCTION

| REV. | COMMENT | DATE |
|------|---------|------|
| | | |
| | | |
| | | |
| | | |
| | | |
| | | |
| | | |
| | | |
| | | |
| | | |

SEAL:

Project Date **6.22.2016**
 Project No. **Project No. 1549**
 Drawn By **kjj**
 Checked By **dl**
 Sheet Name

**SENIOR HOUSING BUILDING
ELEVATIONS**



Lantz-Boggio Architects, P.C.

MIRASOL COMMUNITY
LOVELAND, COLORADO

GENERAL DEVELOPMENT PLAN

OWNER:

CITY OF LOVELAND HOUSING AUTHORITY
375 W. 37TH STREET
LOVELAND, CO 80538
Ph: (970) 667-3232
Fax: (970) 278-9904

ARCHITECT:

LANTZ-BOGGIO ARCHITECTS, P.C.
5650 DTC Parkway, Suite 200
Englewood, Colorado 80111
Ph: (303) 773-0436
Fax: (303) 773-8709

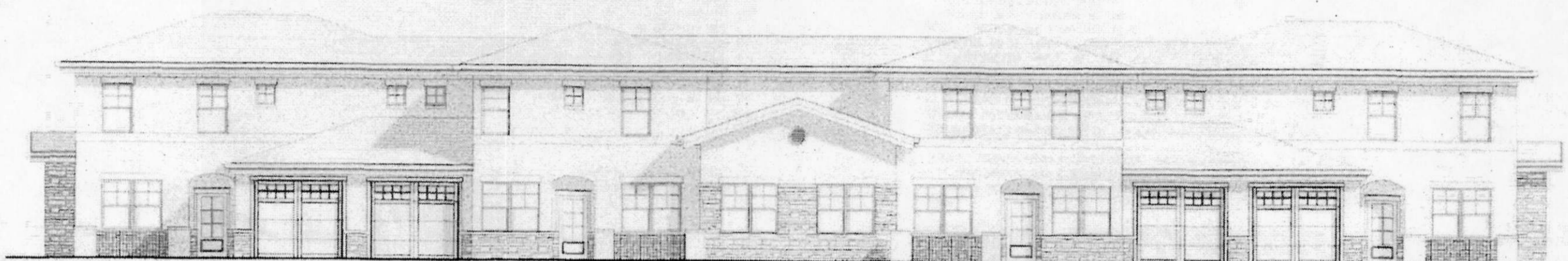
CIVIL ENGINEER:

CORNERSTONE ENGINEERING
437 SOUTH ST. VRAIN
ESTES PARK, CO 80517
Ph: (970) 586-2458
Fax: (970) 586-2459



ASSISTED LIVING FACILITY /
ADULT DAYCARE FACILITY

3 OF 5 SCALE 1/8" = 1'-0" RE: 1 / A1.1



MULTI-FAMILY ATTACHED
HOMES

2 OF 5 SCALE 1/8" = 1'-0" RE: 1 / A1.1



GROUP ASSISTED LIVING HOME
OR "GREENHOUSE"

1 OF 5 SCALE 1/8" = 1'-0" RE: 1 / A1.1

| No. | Date | Description |
|----------------------|-----------------|--|
| GDP First Amendment | October 5, 2010 | Increased density and maximum number of units, added product types of adult daycare, assisted living and multifamily attached, modified building height and off-street parking ratio |
| GDP Second Amendment | March 26, 2012 | Adjust parking ratio and increase density and number of units in area D and E |
| GDP Third Amendment | June 22, 2016 | Added additional 5+- acres to the north |

Issued For:

| No. | Date | Description |
|-----|------------|--------------------------------------|
| 1 | 07.10.2012 | City of Loveland Review Comments |
| 2 | 07.26.2012 | Water/Wastewater Comments 07.25.2012 |
| 3 | 08.17.2012 | Planning Redlines |
| 4 | 11.7.2012 | City Council Conditions of Approval |

Seals:

LBA Project Number:
2357.00

Date:
MARCH 26, 2012

Sheet Title:

CHARACTER BUILDINGS

Sheet Number:

6 OF 6

