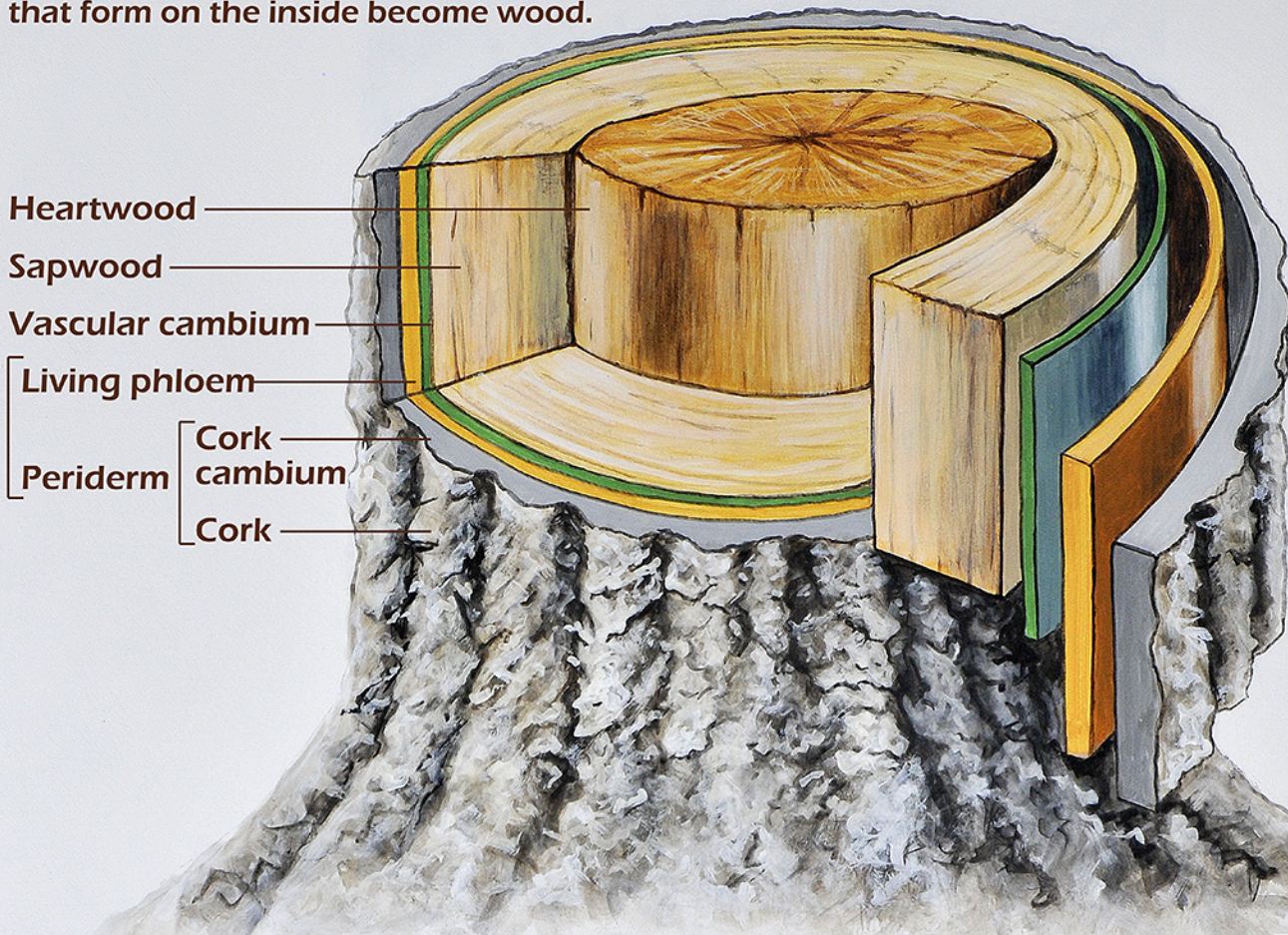


Extending from the tips of the roots to the ends of the branches is a single layer of living cells - the cambium layer. These are the only living cells in the trunk. In summer, when the tree grows, these cells divide continuously - adding thickness but no height to the tree. The cells that form on the outside of the cambium layer become bark; those that form on the inside become wood.



Heartwood
 Sapwood
 Vascular cambium
 Living phloem
 Bark
 Periderm
 Cork cambium
 Cork

BARK STRUCTURE AND TYPE



Cottonwood

Spruce

Oak

Bristlecone Pine

Scotch Pine

young bark

old bark