

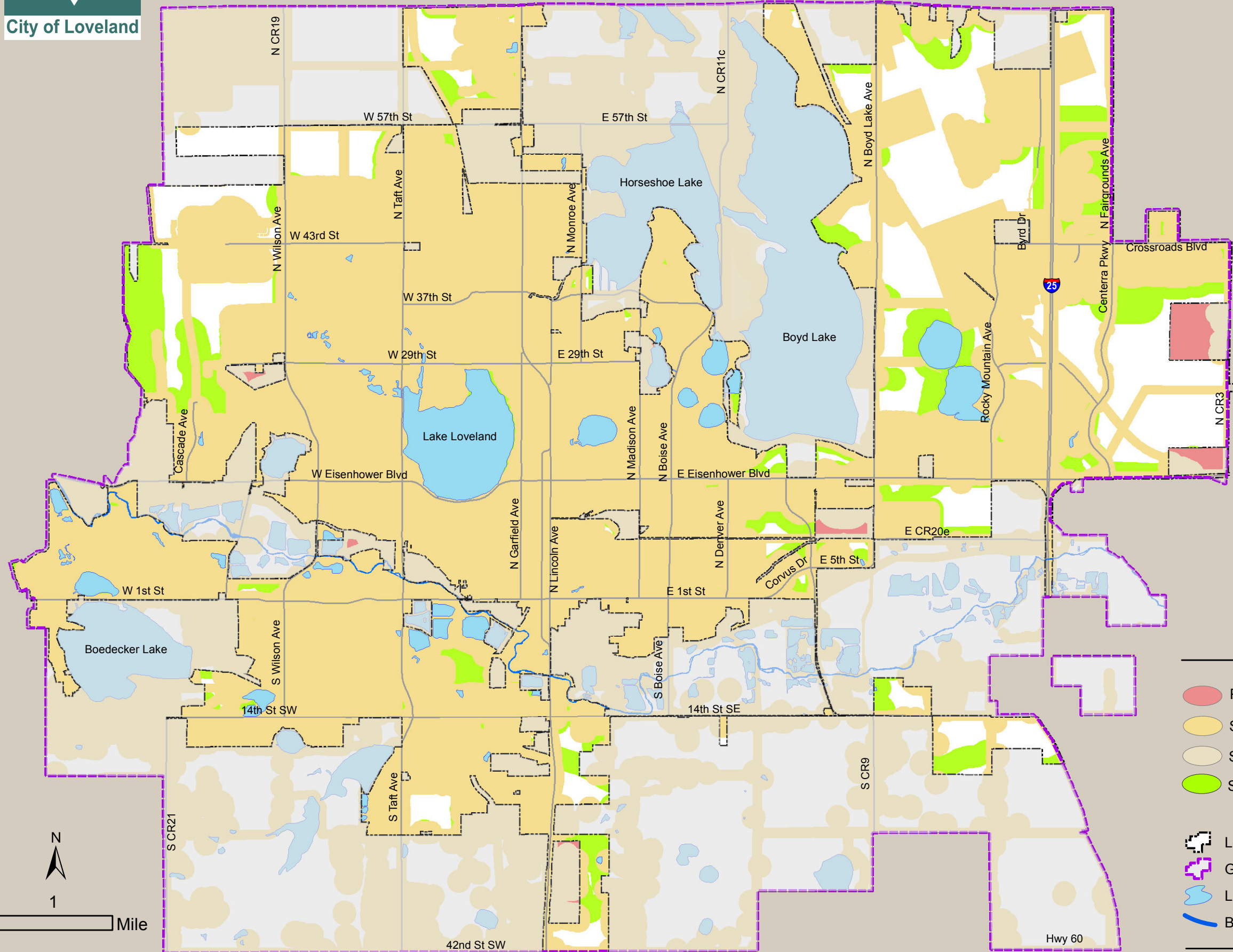


# Setback Areas as defined by New COGC Regulations and City Enhanced Standards

This map represents general application of the Colorado Oil and Gas Conservation (COGC) newly adopted regulations under Section 603, effective August 1, 2013. In addition, this map shows general application of the proposed City of Loveland Enhanced Standards for setbacks. These setbacks apply to new wellheads or facilities.

This map is based on the best available information/GIS data and is considered a generalized analysis of both the COGC and City regulations and does not account for possible variation of how the setback rules are applied. Actual wellhead/facilities locations will be evaluated on a detailed site-specific analysis. This map is subject to change.

Please note: The new COGC regulations are applied to areas within the Loveland Growth Management Area (GMA). The proposed City Enhanced Standards are applied only within the city limits shown in the black dashed line.



## Legend

- Portions of County Enclaves not within a Setback Area
- Setback Areas in Loveland as defined by New COGC Regulations
- Setback Areas in the County as defined by New COGC Regulations
- Setback Areas as defined by City of Loveland Enhanced Standards  
This map layer only shows where the standards are greater than the COG regulations within City Limits
- Loveland City Limits
- Growth Management Area
- Lakes and Ponds
- Big Thompson River



1

Mile