
Loveland Fire Rescue Authority Board Meeting



Station 1
410 East 5th Street, Second Floor
Loveland, Colorado 80537
Thursday, April 11, 2013

1:00 PM



Loveland Fire Rescue Authority (LFRA) Board Meeting Agenda
Station 1, 410 East 5th Street, Second Floor
Loveland, Colorado 80537
Thursday, April 11, 2013
1:00 PM

The Loveland Fire Rescue Authority is committed to providing equal opportunity for citizens and does not discriminate on the basis of disability, race, age, color, national origin, religion, sexual orientation or gender. The Authority will make reasonable accommodations for citizens in accordance with the Americans with Disabilities Act. For more information, please contact the ADA Coordinator at bettie.greenberg@cityofloveland.org or 970-962-3319. Wireless access: COLGuest

CALL TO ORDER

PLEDGE OF ALLEGIANCE

ROLL CALL

AWARDS AND PRESENTATIONS

PUBLIC COMMENT

CONSENT AGENDA

Anyone in the audience will be given time to speak to any item on the Consent Agenda. Please ask for that item to be removed from the Consent Agenda. Items pulled will be heard at the beginning of the Regular Agenda. You will be given an opportunity to speak to the item before the Board acts upon it.

Public hearings remaining on the Consent Agenda are considered to have been opened and closed, with the information furnished in connection with these items considered as the only evidence presented. Adoption of the items remaining on the Consent Agenda is considered as adoption of the staff recommendation for those items.

Anyone making a comment during any portion of today's meeting should come forward state your name and address for the record before being recognized by the Chair. Please do not interrupt other speakers. Side conversations should be moved outside the meeting room. Please limit your comments to no more than five minutes.

1. Consider the Minutes from the March 14, 2013 Loveland Fire Rescue Authority Board Meeting

End of Consent Agenda

REGULAR AGENDA

Anyone who wishes to address the Board on any item on this part of the agenda may do so when the Chair calls for public comment. All public hearings are conducted in accordance with Board By-Laws. When Board is considering approval, the Authority's By-laws only requires that a majority of the Board quorum be present to vote in favor of the item.

2. Consider Approval of the Basic Services Model Through 2020



Loveland Fire Rescue Authority (LFRA) Board Meeting Agenda
Station 1, 410 East 5th Street, Second Floor
Loveland, Colorado 80537
Thursday, April 11, 2013
1:00 PM

3. Review Briefing Papers and Correspondence
 - a. Chief's Report
 - b. Loveland Rural Fire Protection District New Station 9, report, drawings and cost estimates
 - c. Letters
 - d. February Statistics
4. Board Member New Business/Feedback
5. Any Other Business for Board Consideration

ADJOURN



Agenda Item Cover

Item No.: 1

Meeting Date: April 11, 2013

Prepared By: Renee Wheeler, Public Safety Administrative Director

TITLE

Consider the Minutes from the March 14, 2013 Loveland Fire Rescue Authority (LFRA) Board Meeting

EXECUTIVE SUMMARY

The attached document, prepared by Roylene Sterkel, is a record of the March 14, 2013 LFRA meeting. It details the discussions at the meeting including the approval of the consent agenda (minutes from the February Board meeting, 2012 LFRA Annual Report, approval of a resolution for a supplemental budget appropriation (carryover money and Community Safety Lieutenant), approval of the 2012 International Fire Code Amendments, and the Chief's report.

BACKGROUND

Standard meeting protocol

STAFF RECOMMENDATION

Approve as written

FINANCIAL/ECONOMIC IMPACTS

N/A

ASSOCIATED STRATEGIC GOALS

N/A

ATTACHMENTS

Minutes



Loveland Rural
Fire Protection
District

**Fire & Rescue Authority Board Meeting Minutes
Thursday, March 14, 2013**

Members Present:

Board Chair Jeff Swanty
Mayor Cecil Gutierrez
Councilor John Fogle
Fire Chief Randy Mirowski
Public Safety Admin. Dir. Renee Wheeler

Rural Board Secretary Greg White
Asst. City Attorney Teresa Ablao
City Manager Bill Cahill
Rural Board President Dave Legits
BSC Roylene Sterkel

Absent:

Division Chief Ned Sparks

Call to Order:

Chairman Swanty called the Fire & Rescue Authority Board meeting to order on the above date at 1:05 p.m.

Pledge of Allegiance:

The Board participated in the Pledge of Allegiance.

Roll Call:

Secretary Sterkel conducted roll call.

Awards and Presentations: None

Public Comment: None

Consent Agenda:

Rural Board President Legits moved to approve the Consent Agenda. Chairman Swanty seconded the motion. Motion carried.

Regular Agenda:

2. Review the 2012 Loveland Fire Rescue Authority Annual Report.

PSA Director Wheeler explained that this annual report is our first attempt at a report for LFRA and we need the Boards input for any changes for next year's annual report. She gave an overview of the report which included a history of calls, the difference between Alpha vs. Charlie/Delta calls, response information related to performance measures and funding for the Fire Authority.

Rural Board President Legits asked if the number of firefighters per 1,000 population which shows as .79 in the report, is after the hiring of the six new firefighters? PSA Director Wheeler said that it is.

Chief Mirowski explained that with the addition of six more firefighters for Station 2 our numbers should look better. Our numbers won't look that much better when comparing ourselves to surrounding departments if those departments are also hiring staff. PFA appears to be the only department with plans for a new station and staffing.

City Manager Cahill talked about the citizen ratings of the Fire Authority which are listed on page 27 of the annual report. The ratings are excellent and we are meeting our response time goal as well. Even though our staffing levels look low in comparison to other departments, our service level is very good. The one service we are lacking right now is the capability to do the Business Safety Inspections. Chief Mirowski said that he would like to see us find a way to get feedback from the actual citizens that we respond to.

Chairman Swanty asked who will get a copy of the annual report. PSA Director Wheeler said the report will be posted on our website and copies will be given to governing boards, partner boards, advisory commissions, LFRA staff, citizens that request a copy and other surrounding fire departments. Chief Mirowski thanked everyone for their input for the report and especially PSA Director Wheeler for putting the document together. Chairman Swanty said he feels it's important that a copy be provided to each fire station and Rural Secretary White asked that it also be posted on the Rural District website.

3. Consider Approval of a Resolution Approving a Supplemental Budget to the 2013 Loveland Fire Rescue Authority Budget for Additional Funding from the City of Loveland and the Loveland Rural Fire protection District from Remaining Funds for Projects Approved but not Completed in 2012 and New Projects.

BSA Director Wheeler said this Resolution would approve an increase to the 2013 LFRA operations budget of \$316,830. The request includes \$195,370 to reinvest savings from the 2012 operations budget primarily for equipment related items and \$121,460 for a Lieutenant position in the Community Safety Division. The Board reviewed pages 55-57 of the report which shows the funding sources, savings from Station 6 expansion, savings from Station 2 land purchase, savings from the City

capital replacement fund and the FEMA Assistance to Firefighters Grant savings. If the Board approves the Resolution, it will go before the City Council and the Loveland Rural Fire Protection District for approval in April. If both partner boards approve the Resolution it will come back to this Board at the May 9th meeting.

The Board then talked about the options for adding a fourth bay for the new Station 2. The original conceptual station submittal was for a three bay station. After further review to meet the fifty year life span of the facility, the request is to add a 4th bay which increases the sq. ft. by approximately 1500 square feet; it is unknown what the exact costs for the 4th bay would be, but an initial estimated cost of \$573,000 was discussed- (an actual cost of \$285,00 for the 4th bay was more likely). The options are to either go ahead and add the 4th bay now or build the station so that a 4th bay can be added at a later date. City Manager Cahill said he advocates designing the station to have the 4th bay added later after we see what monies are available.

Chief Mirowski talked about the current Station 2 storage issues with the three bays that they currently have. With our system being one that gets drained when we have a large event, we need stations that can house apparatus and equipment for re-calls. City Councilor Fogle asked if we have bids for the addition of the 4th bay. Chief Green said that those official bids are about two weeks out. PSA Director Wheeler said that the number she used of \$573,000 may be high since the bay shouldn't cost as much as other parts of the station. She indicated that the CEF's still look positive for 2014. City Manager Cahill said that since we are talking about that much money we need to make sure we know where that money will come from.

Councilor Fogle said that with interest rates being as low as they are now, it might be a good time to include the 4th bay. We may want to get a projection of costs three years out to see what the increase may be if we wait. Chairman Swanty asked how adding a 4th bay matches up with our Strategic Plan and Chief Mirowski said we won't know until we get the official bids back. Rural Secretary White asked what affect it might have down the road for money if we appropriate for it now. PSA Director Wheeler said that the CEF's projected through 2019 look good.

Rural Board President Legits said that having the necessary space in a bay to do maintenance and projects makes a huge difference in efficiency and effectiveness. Chief Mirowski said his hope for future stations is that we never build one with less than 3 bays. The current Station 2 has three bays and it's still very crowded.

Rural Secretary White said his Board will want to know why they are being asked to turn over 2012 savings. PSA Director said that the money will be spent to finish projects that were not finished in 2012. Chief Mirowski said that we're finishing projects that are needed, not using the money for new or unnecessary things.

City Manager Cahill moved to approve the Resolution. Councilor Fogle seconded the motion and it carried.

4. Consider Approval of the Amendments to the 2012 International Fire Code.

Chief Green said that he and Deputy Fire Marshal Dann have met with the Building Department and the Construction Advisory Board to review the 2012 Codes and make necessary Amendments appropriate for our community and jurisdiction. One of the Amendments for us is that we will not require fire sprinklers in new one- or two-family dwellings as long as they are within 600 feet of a fire hydrant and located within 400 feet from the entrance on a dead-end roadway. The Amendments will be presented to the Rural Board, City Council and County Commissioners for their approval.

The Board discussed the pro's and con's of the fire sprinkler issue and the fact that most basements are now living quarters and more apt to be a place where fires might start. If they don't have sprinklers or a 30 minute rated ceiling in the basement, they are a high hazard for firefighters because the floor can collapse within minutes of a fire.

Chairman Swanty said he feels we need to take a leadership role in getting sprinklers required in homes because it's such a life and property saving situation. He indicated that he will not vote for the Amendments because of that.

Councilor Fogle said he agrees, but we need to find a way to get the cost of residential fire sprinklers down. City Manager Cahill said he feels it will eventually happen but it's a challenge for us as a City to find a strategy for determining who can do the work to prevent monopolies from happening. We currently are on par with other cities. Mayor Gutierrez said we must move forward with studies and that Loveland can take a lead role and be effective in making this a requirement.

Councilor Fogle moved that the Amendments be approved as written. Rural Board President seconded the motion and it carried.

5. Review Briefing Papers and Correspondence.

- Chief Mirowski shared pictures of the new Battalion Chiefs vehicle and said it should be ready to be in-service in the next 4-6 weeks.
- Chief Mirowski said that the Conferences for Blue Card and Emergency Managers in Loveland were very successful. Approximately 350 emergency managers and other personnel attended the first conference while another 250 fire officers and firefighters attended the Blue Card Conference. He has had very positive feedback with the same question being asked, "are we doing it again next year"? At this point, we're not sure. Chairman Swanty said he enjoyed the presentation by Gordon Graham and Mayor Gutierrez gave compliments to Lt. Pat Mialy for her work on the Emergency Managers conference.
- Chief Mirowski attended a meeting for the State Fire Chiefs Association where ISO field officers discussed the future and changes for ISO. LFRA was due to have another evaluation done in 2013, but it's clear that won't happen now. The

direction that ISO is taking is that they will do less evaluations unless there are significant changes in a department or a department contacts them for an evaluation to improve their classification number. We would still like to get our City rating to a 3 and keep the Rural at a 5.

- Chief Mirowski said that FRAC will be attending an upcoming Public Safety Summit for leaders, boards, etc.. Included will be Police, Fire and Emergency Medical. The goal is to determine what the community wants to see from their public safety providers. Chairman Swanty and Rural Secretary White will be among the speakers for the summit.

6. Board Member New Business/Feedback.

- City Manager Cahill indicated that the City Council will be looking at an ordinance to allow the City Manager to make emergency decisions when it comes to burn bans in our jurisdiction. That information will come before this Board in April and go before City Council in May. That Ordinance will not address fireworks. Last year was a good example of what not to do because the process took weeks to get an Emergency Ordinance through Council and the County and State were changing their guidelines on a regular basis due to the changing weather conditions. We need to be able to stay in line with the state and county when burn bans are set.
- Councilor Fogle talked about notifying firework vendors early this year if it looks like we may have a ban on sales like we did last year. We need to give vendors as much lead-way as possible for moving their fireworks somewhere else or not buying as much if they know they can't sale it here. He advocates that the City look at the weather situation relative to moisture in April and make a decision then. Rural Board President Legits said that you can look at the Ft. Collins website and it shows trends compared to last year. City Manager Cahill said there will be meetings set up with Larimer County regarding the wildland fire situation and probability. Rural President Legits said those meetings should take place on a monthly basis. The Board asked Chief Mirowski to draft a letter to the firework vendors with guidelines. Rural Board Secretary White asked if the Rural District needs to be involved and Chief Green said no.
- Chairman Swanty asked if there was any new information relative to the Fire Museum finding a place to display their items. City Manager Cahill said he met with Jack Sullivan and Ev Roberts a couple of weeks ago. They are still looking for a place, but it needs to be an occupancy where volunteers have access. The City is helping them try to locate a building that is either under the City's control or an owner that is willing to let them use their building for little or no cost.

With no further business at hand, Chairman Swanty moved to adjourn the meeting. Meeting was adjourned at 2:30 pm.

Minutes submitted by Secretary Sterkel



Agenda Item Cover

Item No.: 2

Meeting Date: April 11, 2013

Prepared By: Renee Wheeler, Public Safety Administrative Director

TITLE

Consider Approval of the Basic Services Model through 2020

EXECUTIVE SUMMARY

The Strategic Plan sets forth the Basic Services Model as the operations financial plan through 2020. Each year this model is updated based on new information available as LFRA progresses through the phased implementation of the Strategic Plan. It includes the best estimate of the cost to continue the current level of service and demonstrates the cost of each phase of the implementation plan. This is presented for Board approval to begin the 2014 Budget Development process.

BACKGROUND

The LFRA December, 2012 Board retreat, held at Station 6, identified an improvement related to budget consideration. The following is an excerpt from the notes of that session approved at the January, 2013 Board meeting:

“Budget Consideration should begin with Fire Authority Board—hold a policy level review to guide the budget prep for the year around April, where we highlight the variance from the Strategic Plan.”

The first section of the plan is based on ten years of estimated budgets that have been developed for all programs within LFRA. Each program budget includes a scheduled replacement of tools and equipment based on the manufacturer’s recommended useful life, the current condition of the equipment, and “smoothing” of the replacement when most all of the units were replaced at the same time (i.e., radios, self-contained breathing apparatus). It includes a standard 3.5% inflationary increase on the cost for everything except tools and equipment. Experience would suggest that most equipment increases in cost on the average 5% annually. The revenue generated by LFRA is also inflated by 3.5% annually within this plan (permits, fireworks stand reviews, special events fees, training center use fees, other agency deployment reimbursements).

The next section of the plan depicts the calculation of the partner contributions. Total expenditures less LFRA generated revenue is the basis for calculating the City (82%) and Rural District (18%) contributions. The final calculation nets out of the City contribution, the City’s share of the indirect costs (services provided by the City to the Authority like Human Resources, Legal, Finance, IT, Facilities, Dispatch) because those expenditures are already recognized in the City expenditures.

Tables have been prepared to show capital (apparatus replacement and station construction) expenditures as well to provide the Board with information about expenditures that will be requested from the City and the Rural District. This information was included in the Strategic Plan as well. The apparatus replacement tables are separated by responsible organization based on the intergovernmental agreement that established the



Agenda Item Cover

Item No.: 2

Meeting Date: April 11, 2013

Prepared By: Renee Wheeler, Public Safety Administrative Director

Fire Authority. The numbers in the first five years of the plan were developed in 2010 and had not been adjusted for inflation. The apparatus replacement tables presentation includes inflation at a modest 3.5% annual increase. The second five years of apparatus replacement in the Strategic Plan did appear to include inflation so that a reasonable annual contribution (\$575,000) to an equipment replacement fund could be calculated when LFRA becomes responsible for the replacement of apparatus in 2017. *The Station 2 estimates are still in the process of being refined with the architect and the City Facilities Division and therefore, they are not yet final.* Based on the current estimates, the Station 2 adopted budget will not be sufficient for a three bay station. The estimates shown in the table and the attached Fire CEF (Capital Expansion Fee) Fund document are based on resources that the City’s Budget Office has projected. The fourth bay has been suggested for construction in 2015. It is the staff recommendation to have a complete presentation on this station projections at the May 9, 2013 LFRA Board Meeting.

As LFRA begins implementation of the Basis Services Model some corrections have been made. For example, it became clear to us that the staffing of Station 2 would include six Engineer promotions rather than three. The three new positions were considered in the previous versions but an additional three must be considered for the vacancies that will be created when three Engineers promote to the three new Lieutenant positions in the model for Phase II.

The variances to the plan from its initial version forward are highlighted below:

- The cost of gear for each new firefighter was updated from \$4,000 to \$5,500 (better information available)
- Benefits are greater than 30% (30% was a general estimate and actual benefit costs were calculated as a percentage of salary; the actual is 37%-43%)
- Gear was included in the second year for part time firefighters because it became clear the existing inventory was insufficient.
- CSD Lt. was adjusted down to entry level, equipment necessary was adjusted, and costs for salaries and benefits were reduced from full year to half year in 2013.
- The cost of adding positions in the plan was reduced by adding firefighters and including the cost of promotions for Lieutenants and Engineers, as opposed to new Lieutenants and Engineers.
- The thermal imaging inventory link was corrected to include the total line for each year.
- Addition of the Type 6 Engine that was approved in the 2013 Budget.
- Addition of the Plans Reviewer that was approved as a 2013 Supplemental Budget.
- Increase in the maintenance contract in 2014 and beyond for new radios purchased with grant money in 2012.
- Six Engineer promotions rather than three for Station 2.
- Volunteer supplemental insurance reduced from \$17,700 to \$6,700.
- Training Center tables and chairs replacement adjusted in 2014 based on 2013 replacements.
- ATV for Urban Search and Rescue needs to be replaced in 2014, not originally slated for replacement.



Agenda Item Cover

Item No.: 2

Meeting Date: April 11, 2013

Prepared By: Renee Wheeler, Public Safety Administrative Director

This is a planning document with the intent of projecting needs through 2020 and communicating with partner governing boards of the Fire Authority. When the Loveland Rural Fire Protection District approached voters for a mill levy increase it was communicated that the mill levy increase would meet the needs through 2016 and another election would have to be held to increase the mill levy thereafter. This is still the case. The current version of the Rural District's plan through 2019 is attached. It is anticipated that at the end of 2016 the Rural District Vehicle Fund will have to contribute \$85,559 to balance the General Fund. At the end of 2016 the Vehicle Fund and the total available after that contribution would be \$259,456. If there is no change in revenue in 2017 and the Vehicle Fund contributes the remaining \$259,456, the General Fund Balance will still be short of the needs by \$140,639.

The Budget Officer for the City of Loveland indicated in a recent meeting with the City Manager that the City's contributions to the Basic Services Model ten year plan have been incorporated into the City's General Fund Finance Master Plan.

Beyond the current Basic Services Model there are a variety of programs that are still being considered for the 2014 Budget Request. Most of these are related to the fourth pillar of success that the Chief identified in the Vision Tour meetings: Human Resources.

- Pay Plan Adjustments (We expect to use the merit pool money for market alignments but the need may exceed the traditional allocation of 3.5% of total salaries.)
- Holiday Pay, as opposed to granting holiday accrual on regularly scheduled shift days
- Overtime Management Strategies may include additional Rover positions (It is expected that we would use a reduction in overtime to reduce the overall cost of this proposal.)
- Pay for outside trainings (Additional overtime cost that may offset the savings from a rover position proposal at least to some degree.)
- Tuition Assistance Program
- Emergency Day Care Contract (either adult or child care)
- Maintenance contract review for software, printers/copiers, mobile devices, AED's
- Equipment repair allocation increase
- Verification of allocations included in the indirect costs services provided by the City
- Tools and Equipment purchased in 2012 will have to be added to inventories to schedule replacements. Depending on the service lives assigned, the future year budgets could increase for those replacements.

STAFF RECOMMENDATION

Entertain a motion to approve the 2013 Basic Services Model through 2020 as presented for use as a basis for submitting the 2014 budget.



Agenda Item Cover

Item No.: 2

Meeting Date: April 11, 2013

Prepared By: Renee Wheeler, Public Safety Administrative Director

FINANCIAL/ECONOMIC IMPACTS

Implementation of Strategic Plan

ASSOCIATED STRATEGIC GOALS

Deploy an effective emergency response to minimize damage and loss. Minimize and mitigate the risks of an emergency occurrence in the community. Deliver a cost effective services.

ATTACHMENTS

Basic Services Model Through 2020

Fire CEF Fund Estimate Through 2020

Loveland Rural Fire Protection District's Financial Plan Through 2019

Loveland Fire Rescue Authority Basic Services Plan-Operations Segment Only (March, 2013)

Assumption for Annual Cost Escalator

3.50%



Current Level of Service Budget:

	2013	2014	2015	2016	2017	2018	2019	2020
City Fire Service Operations Only	\$8,414,420	\$9,289,469	\$9,512,187	\$9,851,219	\$10,487,495	\$10,759,222	\$10,991,681	\$11,461,580
Indirect/Full Costing Expenditures	881,620	912,477	944,413	977,468	1,011,679	1,047,088	1,083,736	1,121,667
Full Cost of Fire Services (linked to program budgets that have planned equipment inventory replacements identified)	\$9,296,040	\$10,201,946	\$10,456,600	\$10,828,687	\$11,499,174	\$11,806,310	\$12,075,417	\$12,583,247
Less Revenue the Fire Service Generates	161,380	167,028	172,874	178,925	185,187	191,669	198,377	205,320
Expenditures less Revenue for Net Expenditure and Contribution Calculation	\$9,134,660	\$10,034,917	\$10,283,726	\$10,649,762	\$11,313,987	\$11,614,641	\$11,877,040	\$12,377,926

Future Expansion Estimates:

Additional costs for the FA (workers comp, prop./casualty) after first five transitional years where employees and property would be retained by the City and the District

	62,324	64,505	66,763	69,100
--	--------	--------	--------	--------

Phase I

Six Firefighters (full year Station 6 Expansion) in 2013	428,010	428,877	443,888	459,424	475,504	492,147	509,372	527,200
Part Time Firefighter Prog (increase rate of pay in 2013 to \$11.25/hr; 12 up 6 to 18 in 2014 gear at \$5,892 per firefighter)	43,490	127,231	97,529	100,943	104,476	108,132	111,917	115,834
Public Safety Administrative Director Position (added in 2012 so it is in the current level of service line)								
Plans Reviewer	71,000	88,932	92,045	95,267	98,601	102,052	105,624	109,321
LT for Community Safety Division half a year in 2013	121,438	93,150	96,410	99,785	103,277	106,892	110,633	114,505
Command Vehicle Replacement (seven year replacement)	75,000							98,761
Small Equipment Replacements and Annual Contribution to Apparatus Replacement (Type 6 Engine in 2013)	110,750				575,000	575,000	575,000	575,000

Phase II

Six Firefighters (half a year Station 2) in 2014		249,789	443,888	459,424	475,504	492,147	509,372	527,200
Three LT's and Six Engineer Promotions in 2014 (half of a year)		47,590	49,255	50,979	52,763	54,610	56,522	58,500

Phase III (Revised for Building Station 10 in 2018 rather than 2016)

Administrative Assistant (1 in 2016)				54,450	56,356	58,328	60,370	62,483
--------------------------------------	--	--	--	--------	--------	--------	--------	--------

Phase IV (Revised for Building Station 10 in 2018 rather than 2016)

Nine (full year station 10) + three rovers (full year, system wide)= 12 full year--Station 10 staffing shifted from Phase III							1,102,714	1,054,399
Three LT's and Six Engineer Promotions in 2019 (full year) Station 10 staffing shifted from Phase III							113,043	117,000

Total Future Expansion Estimates	\$849,688	\$1,035,569	\$1,223,016	\$1,320,271	\$2,003,805	\$2,053,813	\$3,321,328	\$3,429,301
----------------------------------	-----------	-------------	-------------	-------------	-------------	-------------	-------------	-------------

Total Expected Annual Expenditures	\$10,145,728	\$11,237,515	\$11,679,616	\$12,148,958	\$13,502,979	\$13,860,123	\$15,396,745	\$16,012,547
---	---------------------	---------------------	---------------------	---------------------	---------------------	---------------------	---------------------	---------------------

Additional FTE's (excludes 6 PT that are not benefited-2 FTE in 2014)	8.0	6.0		1.0			12.0	27.0
---	-----	-----	--	-----	--	--	------	------

Partner Contributions Calculation: (revenue lines in the LFRA Budget)

Future Fire Authority Net Budget Estimate (Full Cost less Revenue Generated)

	\$9,984,348	\$11,070,487	\$11,506,741	\$11,970,033	\$13,317,791	\$13,668,454	\$15,198,368	\$15,807,227
--	-------------	--------------	--------------	--------------	--------------	--------------	--------------	--------------

City (Contribution of Net Budget at 82%, adjusted for command vehicle that is 100% Rural in 2013)	8,125,665	9,077,799	9,435,528	9,815,427	10,920,589	11,208,132	12,462,661	12,961,926
---	-----------	-----------	-----------	-----------	------------	------------	------------	------------

Rural (Contribution of Net Budget at 18%, adjusted for command vehicle that is 100% Rural in 2013--Amount that should show up in the Rural Districts City Contract line)	1,858,683	1,992,688	2,071,213	2,154,606	2,397,202	2,460,322	2,735,706	2,845,301
--	-----------	-----------	-----------	-----------	-----------	-----------	-----------	-----------

City Contribution Less 82% of Indirect Services Provided by the City: (expenditure lines in the City Budget)

City (Contribution of Net Budget at 82%, adjusted for command vehicle that is 100% Rural in 2013)	\$8,125,665	\$9,077,799	\$9,435,528	\$9,815,427	\$10,920,589	\$11,208,132	\$12,462,661	\$12,961,926
Indirect Services times 82%	\$722,928	\$748,231	\$774,419	\$801,524	\$829,577	\$858,612	\$888,664	\$919,767
City Contribution Less 82% of Indirect Services Provided by the City: (Amount that Should show up in the City's General Fund Finance Master Plan)	\$7,402,737	\$8,329,568	\$8,661,109	\$9,013,904	\$10,091,012	\$10,349,520	\$11,573,998	\$12,042,159

Capital Expenditures (note only):

2013 2014 2015 2016 2017 2018 2019 2020

Apparatus Replacement:

(Concern Addressed: Quotes created in 2010 had not been adjusted for inflation in the first five years, so they have been inflated in this version)

City:								
2000 Smeal Aerial Ladder Truck with a "Tower"/Platform Ladder Truck		\$1,285,470						
Refurbish the 2000 Smeal Aerial Ladder Truck ("Straight Stick")			\$526,650					
2004 General Spartan (used 2012 actual price and inflated it out to 2016)				\$558,560				
Rural:								
Water Tender 1				\$237,000				
Water Tender 8					\$245,300			
LFRA:								
Engine 2 Crimson/Spartan								\$597,390
Water Tender 5						\$357,000		
Annual Total	\$0	\$1,285,470	\$526,650	\$795,560	\$245,300	\$357,000	\$0	\$597,390

Other equipment is outside of this planning horizon

Stations/Related Equipment:

Complete Station 6 and art in public places (added in carryover)	29,820							
Station 2 (additional cost for three bay station, art in public places and fourth bay addition in 2015)	2,900,000	1,026,970	340,875					
Heavy Rescue Station 2 (added \$32k in carryover)	666,500							
Station 10							2,605,000	
Art in Public Places							20,250	
Annual Total	\$3,596,320	\$1,026,970	\$340,875	\$0	\$0	\$0	\$2,625,250	\$0

Rural District Budget - General Fund

Description	2013 Est.	2014 Est.	2015 Est.	2016 Est.	2017 Est.	2018 Est.	2019 Est.
Projected Beginning General Fund Balance	\$384,944	\$399,748	\$293,491	\$121,067	(\$0)	(\$140,639)	(\$599,096)
Contribution from the Vehicle Fund Revenue:				\$85,559	\$259,456		
Property Tax (mill levy at 5.808 in 2012 and 8.708 thereafter)	\$2,027,800	\$2,048,653	\$2,048,653	\$2,151,086	\$2,151,086	\$2,151,086	\$2,151,086
Specific Ownership Tax	91,000	94,241	97,539	100,953	104,487	108,144	111,929
Miscellaneous (interest, Abate Adj. & Other)	77,890	50,907	52,689	54,533	56,442	58,417	60,462
Total Revenue	\$2,196,690	\$2,193,801	\$2,198,881	\$2,306,572	\$2,312,014	\$2,317,646	\$2,323,476
Expenditures:							
Fire Authority Contribution+ in 2013							
\$75,000 For Command Vehicle	1,858,683	1,992,688	2,071,213	2,154,606	2,397,202	2,460,322	2,735,706
Facilities (utilities, rent & maint.)	10,533	10,533	10,901	11,283	11,678	12,087	12,510
Command Vehicle (moved to contribution)	0						
Capital Expenditures (Canyon)	30,000	26,781	27,718	28,688	29,692	30,731	31,807
Pension for Volunteer Firefighters							
Loveland (State Contribution)	20,130	20,130	20,130	20,130	20,130	20,130	20,130
Canyon (Local + State Contribution)	29,971	29,971	29,971	29,971	29,971	29,971	29,971
Miscellaneous Operating	10,000	10,350	10,712	11,087	11,475	11,877	12,293
Canyon Department	32,137	35,479	36,721	38,006	39,336	40,713	42,138
Board Expenses (secretary, directors, & bookkeeper)	12,460	13,305	13,770	14,252	14,751	15,267	15,802
Insurance (Auto, General Liability, Workers Comp, Self Insurance Fund contribution)	16,935	17,528	18,141	18,776	19,433	20,113	20,817
Bonds - officers	0	0	0	0	0	0	0
Office Supplies	500	536	554	574	594	615	636
Accounting & auditing	7,000	8,034	8,315	8,606	8,908	9,219	9,542
Legal and Administrative Prof Exp	42,000	40,000	30,000	30,000	30,000	30,000	30,000
Election Expense	0	0	0	50,000	0	0	0
2% Collection Fee County Treasurer	40,896	40,973	40,973	43,022	43,022	43,022	43,022
Fire Prevention	10,000	0	0	0	0	0	0
Contingency	50,000	50,000	50,000	50,000	50,000	50,000	50,000
Total Expenditures	\$2,171,245	\$2,296,306	\$2,369,121	\$2,509,002	\$2,706,192	\$2,774,067	\$3,054,373
Revenues less Expenditures	\$25,445	-\$102,505	-\$170,240	-\$202,430	-\$394,179	-\$456,421	-\$730,897
TABOR Reserve Contribution	10,641	3,752	2,184	4,196	5,916	2,036	8,409
Projected Ending General Fund Balance:	\$399,748	\$293,491	\$121,067	(\$0)	(\$140,639)	(\$599,096)	(\$1,338,402)
Vehicle Insurance Fund	345,015	345,015	345,015	259,456	0		
Total Available General and Vehicle Funds	\$744,763	\$638,506	\$466,082	\$259,456	(\$140,639)	(\$599,096)	(\$1,338,402)
Total TABOR Reserve 2012=\$54,496	\$65,137	\$68,889	\$71,074	\$75,270	\$81,186	\$83,222	\$91,631
assessed valuation	233,143,397	235,261,032	235,261,032	247,024,084	247,024,084	247,024,084	247,024,084
tax generation	2,030,213	2,048,653	2,048,653	2,151,086	2,151,086	2,151,086	2,151,086
one mill	233,143	235,261	235,261	247,024	247,024	247,024	247,024



Agenda Item Cover

Item No.: 3

Meeting Date: April 11, 2013

Prepared By: Renee Wheeler, Public Safety Administrative Director

TITLE

Review Briefing Papers and Correspondence

EXECUTIVE SUMMARY

The Chief's report includes a variety of general updates including:

- March a Very Busy Month
- Reserve Engine 6 Damage
- LFRA Executive and Staff Level Positions
- Station 2
- New Canyon Station
- Public Safety Summit
- Boards and Commissions and a Combined Meeting
- Training and Use Agreement with Pioneer Forensics
- Auto Aid Agreements with Berthoud and Johnstown
- Major Incidents

BACKGROUND

This section of the agenda is intended to provide general information to keep board members apprised of project status.

STAFF RECOMMENDATION

N/A

FINANCIAL/ECONOMIC IMPACTS

N/A

ASSOCIATED STRATEGIC GOALS

N/A

ATTACHMENTS

- Fire Chief's Monthly Report
- Letters
- Loveland Rural Fire Protection District New Station 9 report, drawings, and cost estimates
- February Statistics



Loveland Fire Rescue Authority Board Fire Chief's Monthly Report- March



For April Board Meeting, 2013

This monthly report is intended as an update to the Fire Authority Board on important information that impacts the organization and the authority board.

March a Very Busy Month- The month of March was one of the busiest that we have experienced in quite some time. We had four working structure fires that went to a level of second alarm or necessitated a shift or all department call back. In addition, we also had two major wildland fires that we responded to that also required shift recalls.

Reserve Engine 6 Damaged in MVA on I-25- On the evening of March 22nd, LFRA Engine 6 was dispatched to a report of an MVA with people injured on I-25. The evening had significant weather issues with snow and icy road conditions. While on the scene checking for injuries, a passenger vehicle slammed into the rear of the engine causing significant damage to the tailboard and damaged one compartment. The force of impact moved the engine 6 feet. The engine was one of our reserves and has been in the city shops and temporarily repaired by our mechanics. No damage estimate has yet been received.

LFRA Executive and Staff Level Positions- We have assigned Division Chief Ned Sparks as the department's new Fire Marshal and head of the Community Safety Division. Chief Mirowski will provide an update on the process for selection of the next Operations Division Chief and the impact of these personnel moves within the department.

Station Two- In March, we had two significant meetings that related to the design and construction of the new fire station two. March 25th the project was reviewed by the Planning Commission and received unanimous approval. On March 27th we had a half-day meeting with the architects of Belford-Watkins and several sub-contractors to review the final design of the project and begin looking at final costs projections. In addition, two neighborhood meetings were scheduled with the Hunter's Run HOA on March 18th and 21st. Both meetings had sizeable crowds, (more than 30 people) and most of the feedback received was positive.

New Canyon Fire Station- The Big Thompson Canyon firefighters are working on a new station up on Storm Mountain, which will replace an older and much smaller, inadequately sized station that currently exists. Funding for this station is coming from the Rural Fire Protection District budget and will not impact the City or the Fire Authority budget. RFPD President Dave Legits will give a brief overview of this project at the meeting. There are some drawings included in the board packet.

Public Safety Summit- In March we began our brainstorming and meetings for the first Public Safety Summit for LFRA, LPD and TVEMS. We have had a good response from the chiefs of all agencies, so we will move forward with a planned meeting in late May or early June. This will be a great opportunity for our political leaders to come together and participate in discussions concerning area emergency services, our common concerns and our plans for improvement of services in the future.

Boards and Commissions and a Combined Meeting- In March we held a combined FRAC meeting with our regularly scheduled Rural District Board business meeting. The outcome was good and there was great interaction between the commission members and the rural district board members. With FRAC now representing both city and rural district citizens, this meeting was of particular importance. We also attended and presented at the City of Loveland annual Boards and Commissions summit. Jon Smela did a great job in presenting an overview of FRAC accomplishments for 2012.

Training and Use Agreement with Pioneer Forensics- LFRA has entered into an agreement with Pioneering Forensics for the use of our training center in exchange for free seats, or seats at a reduced rate for classes. Pioneering Forensics is a company specializing in fire investigations, forensics and arson investigations. Classes will be held during various weeks from April-August of this year. The timing of these classes is particularly beneficial to LFRA as the Community Safety Division (CSD) has several people needing this training for basic and enhanced investigation skills.

Auto Aid Agreements with Berthoud and Johnstown- Chief Sparks has continued his work with the other chiefs from both Berthoud and Johnstown in order to establish an automatic aid agreement for the southeast area of our fire district. ***This is the one remaining area in our district that we have no auto aid agreements.*** All parties are interested and want to get this established. We hope to have formal agreements in place before the end of the year.

Major Incidents-

- There were several major incidents during the month of February. They included:
 - Structure fires
 - * 1209 Boxelder; aid received from PFA.
 - * 3417 N. Franklin – propane explosion and burn patient.
 - * 1226 Spruce Drive – Storm Mt. Big T Canyon Fire district.
 - * 1606 W Eisenhower (Fatsos’s Restaurant Fire)
 - Wildland Fires
 - * “Galena Fire” - Horsetooth Reservoir assist LCSO and PFA
 - * 3800 Fox Dr. - 3 acres threatening structures aid received from Berthoud Fire and Larimer County.

Letters for March 2013

Chief,

I just wanted to say thank you for allowing Greg Ward to come up and do an introduction to Blue Card Command at our “Honoring Tradition, Leading Change” conference. Also want to extend an invitation to you to attend the banquet for this conference on Saturday April 20. Dr. O’neal will be speaking and we would be honored to have you attend.

Last week I had the opportunity to visit your department with Greg Ward and I was very impressed with the organization and the commitment to studying, learning and evolving as a fire service. Your system correlates very well with what I am attempting to do on a smaller scale of here.

Thanks again and I please let me know if you are interested in attending our banquet dinner.

Jason Caughey
Fire Chief
Laramie County Fire District #2

From: Rick Arnold
Sent: Tuesday, March 26, 2013 1:11 AM
To: Randy Mirowski
Cc: Luke Hecker; Rob McDaniel
Subject: Great work by Firefighters

Chief Mirowski,

FYI case from tonight - Case 13-2021 —Great catch by first responding fire team...

At about 9pm,— [REDACTED] was smoking marijuana in the basement of his parent’s house at [REDACTED] when he lit some incense. The incense caught a pile of paper on fire in the bathroom and caused damage to the house. Fire responded quickly, minimized the damage and expelled the smoke. Through the charred ash, the firefighters noticed marijuana paraphernalia in the form of a toilet tissue tube stuffed with dryer sheets. They notified police and we challenged the suspect about the fire. He quickly confessed and we issued Austin a citation for 4th Degree Arson. The home had relatively minor damage to the basement bathroom and some smoke throughout the house but the big find was the cause of the fire.

This was not your everyday paraphernalia type. What a great find by your firefighters!!!

Good work and excellent observations!

--Rick

Letters from Blue Card Conference

Chief - On behalf of the Brunacini Family and the Blue Card Staff, we wish to thank you for the invaluable contribution you made at the Loveland Hazard Zone Management Conference. From the feedback we've received, the conference was a great success. We appreciate the time you took out of your busy schedule to join us and thank you for sharing your insights and expertise with our attendees. Your willingness to volunteer your time, energy and support on behalf of the Loveland Fire Rescue Authority and the Blue Card Program is greatly appreciated. Again, many thanks for your time and effort.

Blue Card Command Staff

Chief Brunacini, John, Nick, Jen and Brandi

From: Rick Davis
Sent: Wednesday, March 20, 2013 7:54 AM
To: Randy Mirowski
Cc: Ned Sparks; Tim Smith; Greg Ward; Michael Cerovski; RJ Varner; Randy Chase; Mark Lyons
Subject: Galena Fire Thanks

Chiefs, Mark, R.J., and Randy,

I received the email below from BC Lippert at PFA regarding the Galena Fire. Although he has the wrong engine number, I presumed that he was still talking about our people.

Thanks
Rick

Hi Rick.

I owed you for letting 2 Brush units and a Chief come up to the Galina fire. I worked with 683 all night. I had them spin weather for the FOBS people the next morning.

I'm appreciate the relationship we have between both departments. We can use each other's resources, have them fit right into a command structure, operate to what level is appropriate, and most of all be safe.

Please pass this along to Chief Mirowski that the Loveland crews did a great job on the fire.

John

Location and Extent Planning Commission Review

4/02/13

Proposal: Loveland Rural Fire Protection District new Fire Station 9

Background: This building project will replace the very small existing Fire Station 9 that serves the Cedar Park and Cedar Springs Estates subdivisions and the surrounding public lands. The current station is poorly located, is too small for the trucks and equipment maintenance, has little parking space and has storm drainage problems. The new station site is a ½ acre parcel donated through a long term extendable lease from the Ray Berg family, owners of the 40 acre Berg Ranch which is the original homestead in the Cedar Park area. The proposed building will be an unmanned 3-bay station to house fire/rescue apparatus that will respond to 911 dispatched emergencies with Big Thompson Canyon VFD firefighters. BTCVFD is operationally under the Suppression Division of Loveland Fire Rescue Authority but is administered by Loveland Rural Fire Protection District.

Location: The station will serve the approximately 150 permanent households and vacation homes in the mountain subdivisions of Cedar Park and Cedar Springs Estates as well as the surrounding public lands with high recreational usage. The area has a single access, the USFS Storm Mountain Access Road. This road starts from County Road 43 just west of its junction with US Highway 34 in the community of Drake. The road is used by the residents and by the public to access the vast USFS public lands that surround the subdivisions. Recent County traffic counts found 700-800 trips per day of use on this road.

The building site is located just south of the first intersection (“the Tee”) in the subdivisions. The site is currently a horse pasture used by the Bergs and will be fenced off to maintain that use. The site slopes mildly to the SE. There will be an approximately 6’ cut and fill type excavation to level the building footprint and allow for a large apron area for truck access and egress into the bays. The earth-sheltered (half-buried) nature of the building will reduce its visual impact from the most visible north side. The station will be accessed from Palisade Mountain Drive via a circle drive around the south side of the building.

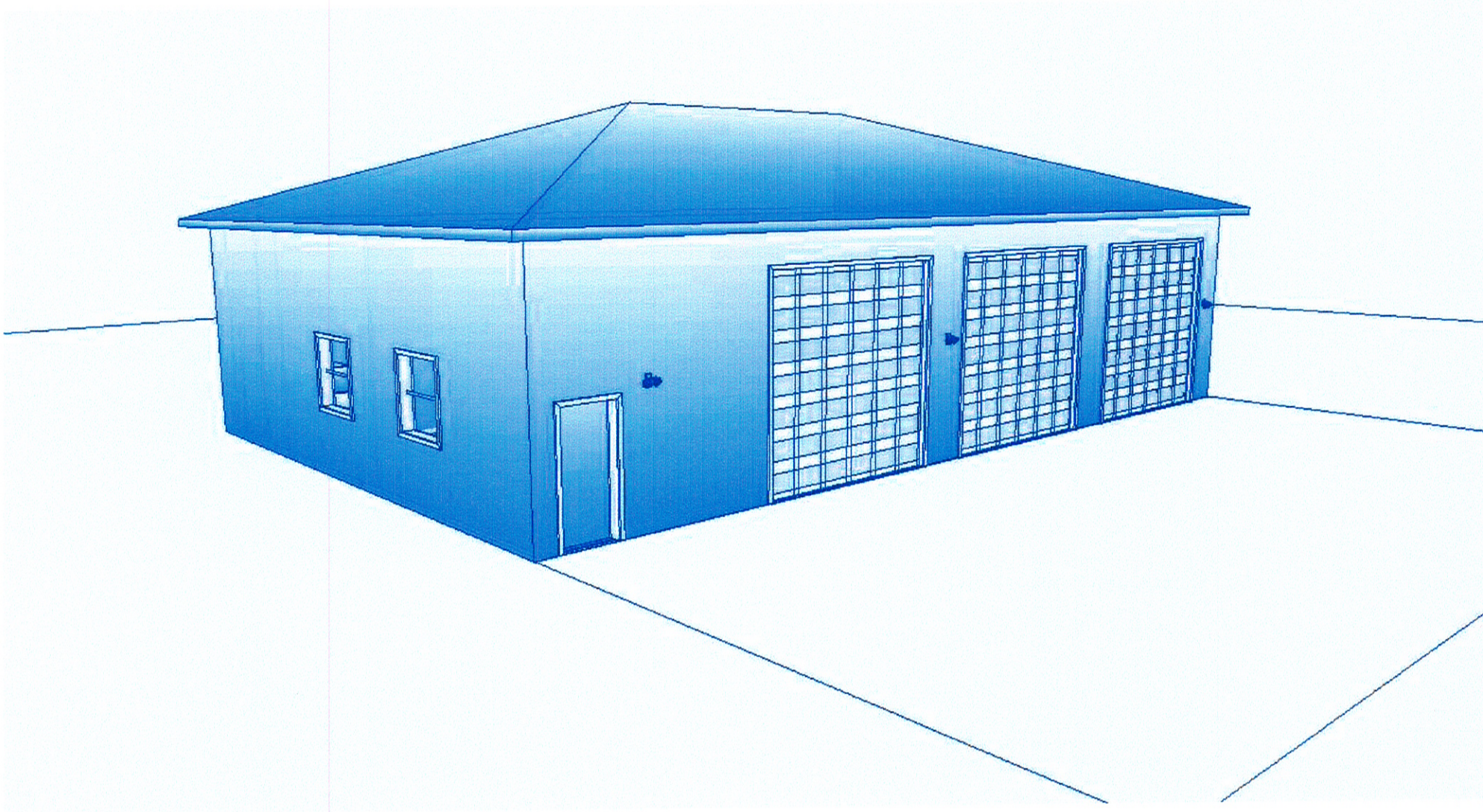
Use: The building will be used primarily by the five District 9 volunteer firefighters of Big Thompson Canyon VFD. BTCVFD operates out of two other stations, one in Cedar Cove in the lower canyon and the station in Drake. Firefighters will respond apparatus from the station to dispatched emergencies such as structure fires, wildland fires, emergency medicals, motor vehicle accidents and various rescue incidents. Firefighters will also use the station to do the regular vehicle and equipment maintenance and repair required to maintain prompt and effective response. There will likely also be limited (less than 5 times a year) use by the residents for annual homeowner association meetings

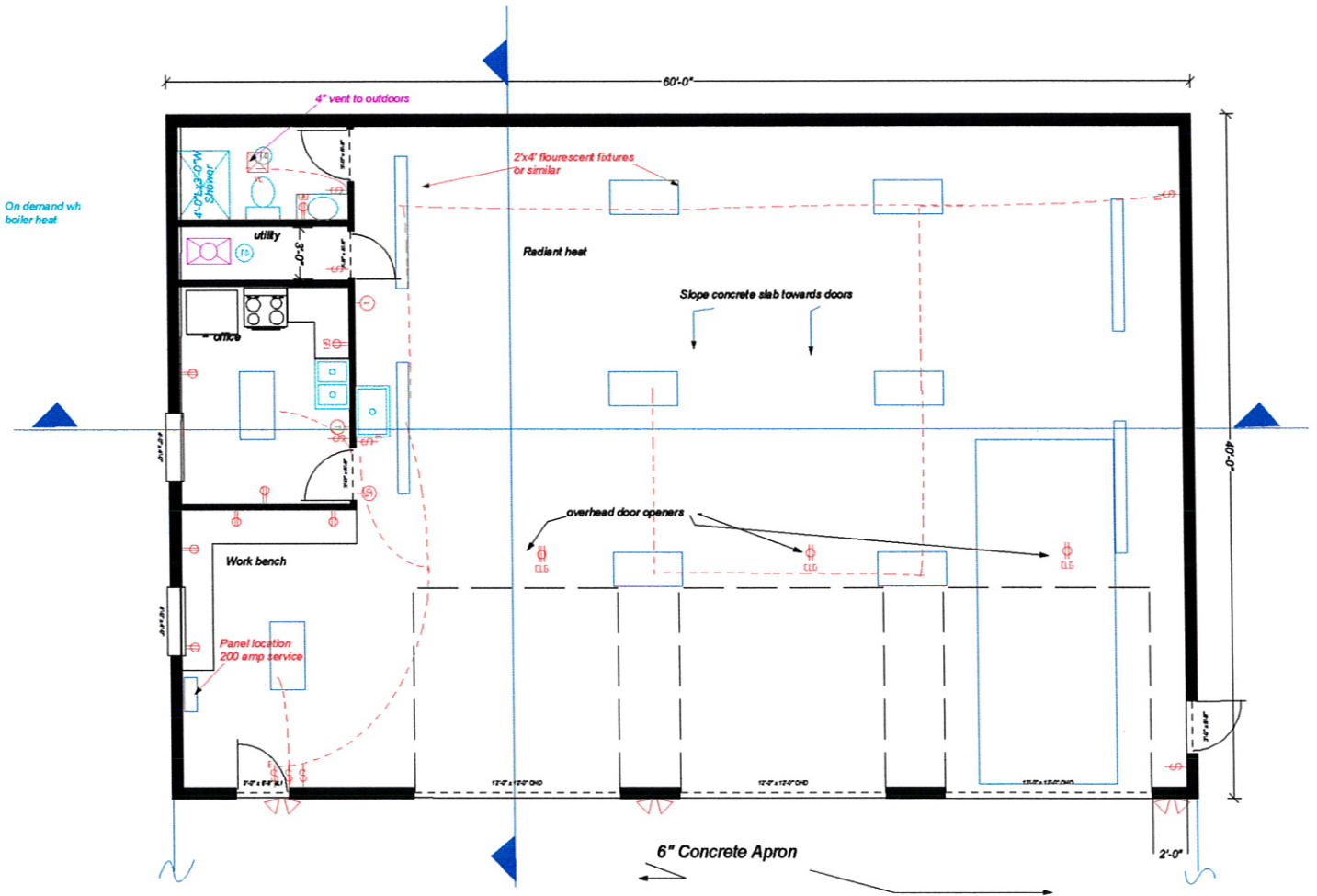
and community gatherings such as the annual Christmas party. Other potential uses include an Incident Command Post for very large emergencies.

Timeframe: The funds for the project come from the operating budget of the Loveland Rural Fire Protection District. The Rural Board has budgeted \$30,000 for this calendar year. We also have about \$2000 from local donations. The majority of the labor will be by the volunteer firefighters and local residents. The project will progress as funds allow. The project will begin as soon as possible. Preliminary cost and available labor estimates suggest it will be completed next year.

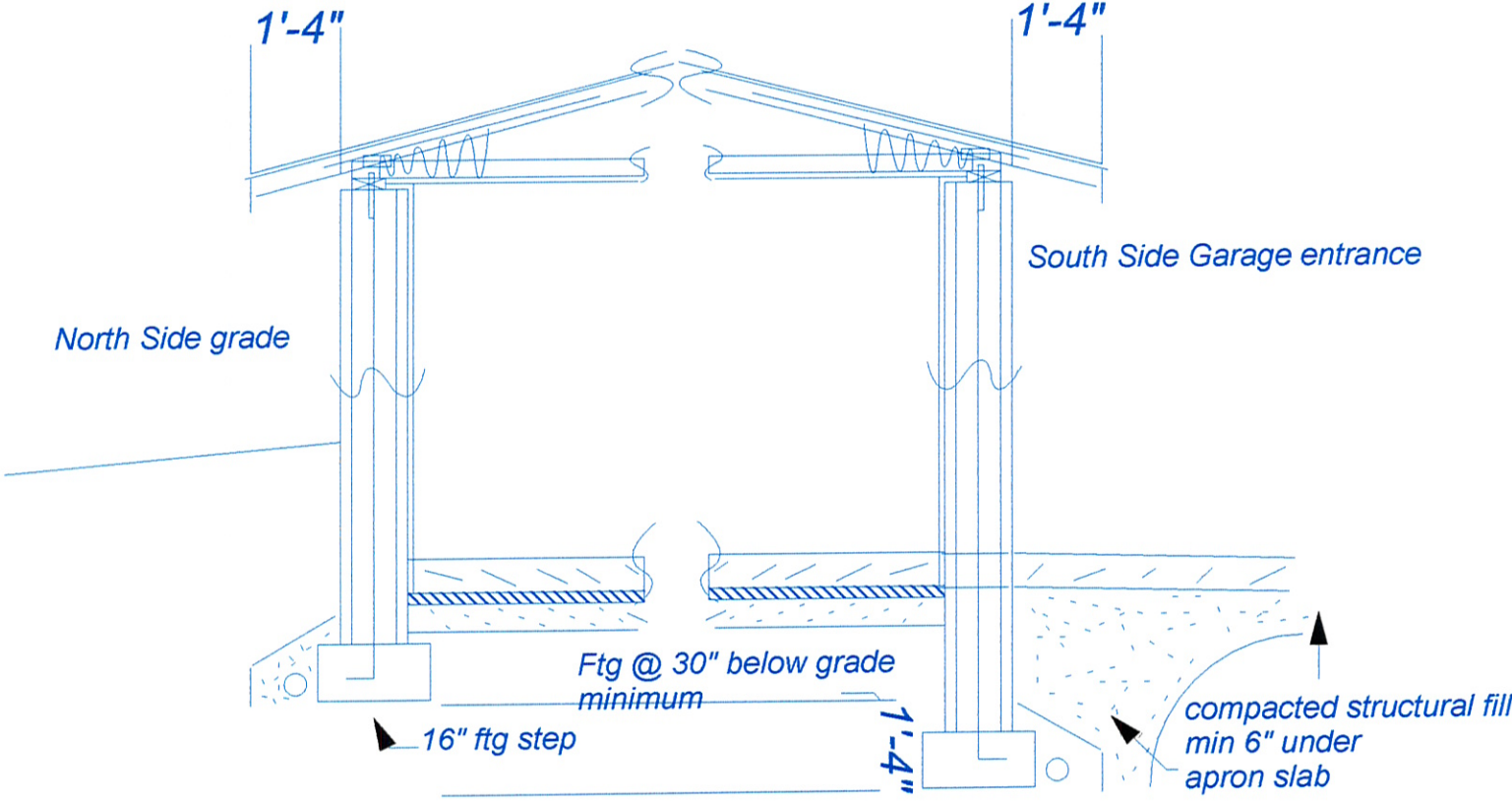
Master Plan: The project is consistent with the Larimer County Master Plan in that the location supports potential reduced response time by firefighters and allows for increased firefighting water supply storage. BTCVFD is an Interagency Cooperator that works with the US Forest Service, Colorado State Forest Service and Larimer County Emergency Services as detailed in the Larimer County Annual Operating Plan. The larger station size supports increased effectiveness through easier equipment maintenance, repair and improvement. It also allows housing for a Type 1 (structure) Engine when one becomes available.

Utilities: Utilities to support this station are typical for the area. PVREA will supply the power via buried cable, an underground propane tank is the fuel for the boiler and domestic water will come from an underground cistern as the wells in the area are poor producers and are expensive. The septic system will be built to engineered standards and meet Larimer County Health Department permit requirements. In addition, we will install a large firefighting water supply tank to ease refill when needed.





14' above slab



New Station 9 Development Cost Estimate

40' x 60' 3 bay station at 100 Palisade Mountain Drive	
Lot size – 115' x 190', 1/2 acre donated by Ray Berg	
Plaque dedicating station to Berg family	\$ 500
Location and Extent Review Fee – 4/15/13	\$ 800
Plot Plan Review Fee	\$ 180
Plan Check Fee	\$ 1,128
Imaging Fee	\$ 18
Use Tax Collection Fee	\$ 759
Septic Permit Fee	\$ 1,023
Building Permit Fee	\$ 1,736
Plumbing Fee	\$ 42
Mechanical Fee	\$ 42
County Fees may be reduced through appeal to County Commissioners	
Land survey not needed as lot was platted pre-1973 (40years)	
Plan/code engineering/architect John Freeman	\$ 1,000
Fence lot on 3 sides with H braces, t-posts	donated
PREA 200 amp service, transformer, meter base, disconnect	\$ 1,926
Septic system	
Percolation test and leach field engineering	\$ 1,200
1000 gal tank and delivery	\$ 900
leach field – excavation, pipe, infiltrators	\$ 1,000
Domestic water cistern, 1250 gallon, waterline to station	\$ 1,300
Underground 1000 gal propane tank, installed, piping & regulator	\$ 2,600
Excavation for building, 48" cut with fill to build up apron area	donated
Temp power permit, conduit, wire, panel, labor	\$ 2,000
Domestic water cistern, piping	\$ 1,300
Footings – forms 25 - 2" x 10" x 16'	\$ 475
Rebar – Horz -35 - 1/2" x 20', verts – 50 – 1/2"x 20'	\$ 500
concrete – 12 yards + \$300 delivery	\$ 1,200
ICF's, Insulated Concrete Forms	\$ 4,000
Wall pour – Rebar – Horz – 130 – 1/2" x 20', verts – 50 – 1/2' x 20'	\$ 1,200
Concrete – 60 yards + delivery	\$ 1,600
Platon waterproofing, drain tile around footing, gravel, plastic	\$ 1,000
Concrete slab – 6" under trucks, 5" elsewhere 2200 sq ft	
Pea gravel - 30 yards	\$ 1,200
Rigid insulation 46 – 2" x 4' x 8' - \$28 each	\$ 1,300
Rebar, 3/8" x 18" grid – width - 50 bars, length 117 bar	\$ 550
Pex tubing and fittings for in-floor heat	
Concrete – 40 yards + \$900 delivery	\$ 4,050

Pump truck	\$ 1,500
Place, finish, saw expansion joint, seal	\$ 3,650
Trusses - 5/12/pitch, hip ends, 2" offset bearing, 16" soffit width	\$ 5,200
Roofing - standing seam steel	\$ 5,500
Stucco finish outside	
Half log columns on 10' spacing	
Drywall or stucco interior walls? One hour fire rating?	
Drywall ceiling	
Ceiling insulation blown-in or vegetable foam?	
Interior framing	\$ 600
Plumbing	
Interior electrical	\$ 2,000
Energy use Rescheck Certification, in-floor heat boiler, zone manifold	\$ 5,000
On-demand propane domestic hot water	\$ 1,000
Garage doors 3 - 12' x 12' w/1 window panel	
32' x 60' apron area - recycled asphalt	
	\$ 60,979

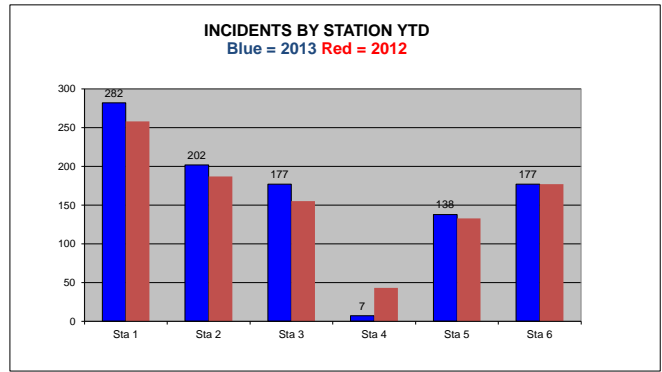
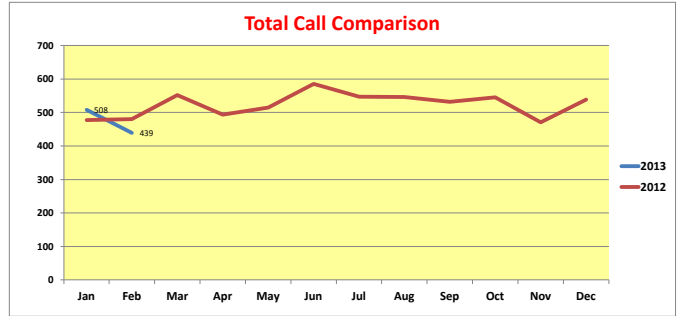


LOVELAND FIRE RESCUE AUTHORITY
February, 2013



CALL INFORMATION						
INCIDENT TYPE	CITY	RURAL	MO. TOTAL	YTD	%	Prev. Yr.
Structure Fire (Residential)	2	0	2	2		
Structure Fire (Commercial)	0	0	0	0		
Vehicle Fire	1	0	1	2		
Grass/Wildland Fire	0	2	2	5		
Smoke/Odor Investigation	9	2	11	24		
Fire Alarm	37	4	41	112		
Other Fire	8	2	10	28		
Total Fire Related	54	10	64	170	18%	133
Total Medical (EMS)	195	37	232	513	52%	522
Motor Vehicle Accident	28	14	43	88		
Hazmat	5	0	5	13		
Water/Ice Rescue	0	0	0	1		
Carbon Monoxide	14	2	16	32		
Public Asst. (Service)	17	7	24	55		
Cancelled Enroute	29	16	45	93		
No Incident Found	5	1	6	12		
Airport Standby	5	0	5	7		
Airport Emergency	0	0	0	0		
Total Miscellaneous	103	40	143	300	30%	298
Month-End Total	352	87	439			
Year Cumulative	794	189		983		953
Percentage YTD	81%	19%				

	Average Response Times YTD in Minutes	Prev. Year	Fire Confined to Room of Origin	Previous Year
Call to Tone Out	2.16	1.94	0%	75%
Dispatch to Enroute	1.05	1.7		
Enroute to 1st Arrival	3.53	3.52		
Average on Scene	12.78	15.11		



MUTUAL/AUTO AID STATISTICS				
	Received	Hours	Given	Hours
Fort Collins	3	1.5	2	0.5
Previous Year	3	1	24	17
YTD Total	3	3.5	10	5.5
Berthoud	0	0	7	4.5
Previous Year	0	0	1	0.5
YTD Total	2	3.5	15	10
Big Thompson Canyon	0	0	4	3.5
Previous Year	0	0	8	3
YTD Total	1	0.5	6	5.5
Windsor	3	1.5	2	1
Previous Year	5	2	3	1
YTD Total	9	5.5	4	2

TRAINING NEWS				
	Hrs/Month	Hrs/Prev Month	Hrs/Prev Yr.	Hrs/Year to Date
Shift	1,593	922	2,634	2,691
Volunteer	28	35	247	63
Admin	34	80	245	153
Total	1,655	1,037	3,126	2,907
Vol. Shift Hours	388	644	967	1,032

LOSS/SAVE INFORMATION				
Type of Fire	City		Rural	
	Loss	Save	Loss	Save
Residential Structure	\$ 21,549	\$ 157,210	\$ -	\$ -
Commercial Structure	\$ -	\$ -	\$ -	\$ -
Other Fires	\$ 1,500	\$ -	\$ -	\$ -
Month Total	\$ 23,049	\$ 157,210	\$ -	\$ -
Year Cumulative	\$ 23,049	\$ 157,210	\$ -	\$ -

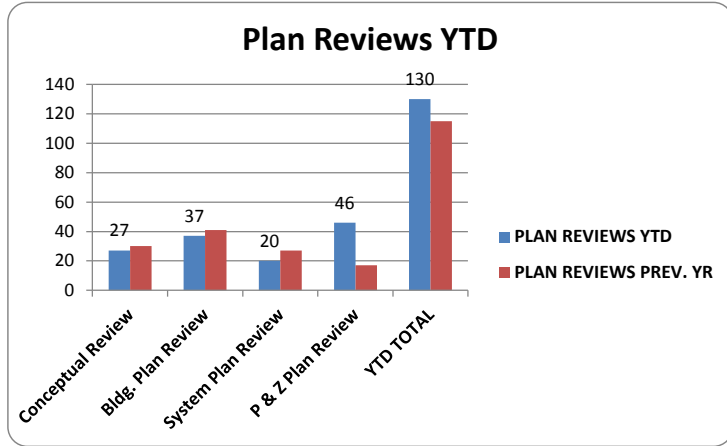
	Specialized Disciplines Training				OT Hrs.	OT \$'s
	YTD Courses	Prev. Yr. Courses	YTD Hrs.	Previous Yr. Hrs.		
Collapse	5	2	3	2		
Rope	10	11	9	12		
Confined Space	6	2	25	1.25		
Trench	0	0	0	0		
Search/Rescue	0	0	0	0		
Water	22	6	25	12.5		
TAC	1	6	1.5	34		
Hazmat	14	19	38	59		
Wildland	29	103	83	377		
YTD TOTALS	87	149	184.5	497.75	308	\$8,552

LFRA COMMUNITY SAFETY DIVISION

February, 2013

PLAN REVIEW STATISTICS

	City	Rural	Mo. Total	Hours
Conceptual Design	17	1	18	18
Previous Month	5	4	9	12
Previous Year	29	1	30	20
YTD Total	22	5	27	30
Building Plan Reviews	12	5	17	15
Previous Month	18	2	20	10
Previous Year	41	1	41	25
YTD Total	30	7	37	25
System Plan Reviews	13	0	13	15
Previous Month	7	0	7	7
Previous Year	27	0	27	20
YTD Total	20	0	20	22
P & Z Plan Reviews	25	1	26	20
Previous Month	18	2	20	10
Previous Year	16	1	17	8
YTD Total	43	3	46	30
TOTAL REVIEWS YTD	115	15	130	107
Previous Year			115	

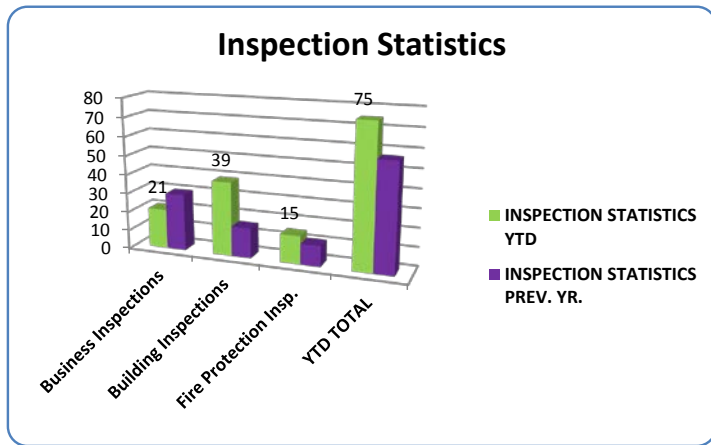


Average days in review - 11 days
Percent within goal time - 76%

* Adjusted

INSPECTION STATISTICS

	City	Rural	Total	Hours
Business Inspections	7	4	11	8.5
Previous Month	6	4	10	8
Previous Year	24	6	30	30
YTD Total	13	8	21	16.5
Building Construction	17	0	17	23
Previous Month	18	4	22	34
Previous Year	15	1	16	13
YTD Total	35	4	39	57
Fire Protection System	13	0	13	11
Previous Month	2	0	2	2
Previous Year	10	1	11	8
YTD Total	15	0	15	13
TOTAL INSPECTIONS YTD	63	12	75	86.5
Previous Year			57	



CSD OTHER ACTIVITIES

	City	Rural	Hours	Mo. Total	Prev. Mo.	Prev. Yr.	YTD Total	Highlights/Projects
Building/Systems Permits	10	0	4	10	6	27	16	* FEMA C.O/Smoke Alarm
Hazmat Permits	10	1	3	11	6	14	17	grant project Installations.
Burn Permits Issued	0	15	2	15	19	29	34	
Investigations	5	0	8.5	5	5	4	10	* B-5 attended & instructed at
Service Call/Complaints	2	1	2	3	2	17	5	the Fire & Life Safety Educators
Car Seats Installed	18	0	9	18	22	24	40	Conference in North Carolina.
JFS Program	1	0	3	1	0	14	1	
Public Education Events	10	0	8.5	10	0	9	10	* Emergency Mngm. COOP
Total Pub. Ed. Contacts	227	0		227	0	274	227	meetings & updates.