

**LOVELAND CITY COUNCIL
STUDY SESSION
TUESDAY, NOVEMBER 13, 2012
CITY COUNCIL CHAMBERS
500 EAST THIRD STREET
LOVELAND, COLORADO**

The City of Loveland is committed to providing an equal opportunity for citizens and does not discriminate on the basis of disability, race, color, national origin, religion, sexual orientation or gender. The City will make reasonable accommodations for citizens in accordance with the Americans with Disabilities Act. For more information, please contact the City's ADA Coordinator at bettie.greenberg@cityofloveland.org or 970-962-3319.

6:30 P.M. STUDY SESSION - City Council Chambers

1. **PUBLIC WORKS** **(60 minutes)**
 City of Loveland Traffic Calming Program Update
 This is discussion item with Council to provide information and answer questions related to the City's Traffic Calming Program.

2. **PUBLIC WORKS** **(60 minutes)**
 Public Works Service Center Design Project and Construction Plan
 This study session will cover the programming process and design that has been completed to date for the proposed Service Center expansion for Public Works Operations. Staff will review the current funding for the project from both enterprise funds and the general fund; changes to the scope of the project may have impacts on the capital projects or Capital Expansion Fee (CEF) budgets.

ADJOURN



CITY OF LOVELAND
PUBLIC WORKS DEPARTMENT

Administration Offices • 410 East Fifth Street • Loveland, Colorado 80537
(970) 962-2555 • FAX (970) 962-2908 • TDD (970) 962-2620

AGENDA ITEM: 1
MEETING DATE: 11/13/2012
TO: City Council
FROM: Keith Reester, Director, Public Works Department
PRESENTER: Bill Hange, PE, City Traffic Engineer and Derek Schuler, PE, Civil Engineer

TITLE:

City of Loveland Traffic Calming Program Update

RECOMMENDED CITY COUNCIL ACTION:

This item is for information and discussion with Council.

DESCRIPTION:

This is discussion item with Council to provide information and answer questions related to the City's Traffic Calming Program.

SUMMARY:

Traffic Calming Program is managed by the Traffic Division of the Public Works Department. The purpose of the program is to work with residents to reduce the negative impacts of traffic on neighborhood streets. The primary issues addressed are:

- Speeding
- High traffic volumes
- Cut-thru traffic
- Accidents
- Safety concerns

The presentation will provide information on the history and current status of the Traffic Calming Program.

REVIEWED BY CITY MANAGER:

William D. Cabell

LIST OF ATTACHMENTS:

1. Traffic Calming Program Update PowerPoint Presentation
2. Traffic Calming Program brochure



Neighborhood Traffic Calming Program

Department of Public Works

Traffic Engineering Division

Program Update, November 2012



History of NTCP in Loveland

- 1999 - Adopted by City Council
- 2001-2005 – Several projects constructed.
- 2005 – Reviewed/updated
 - Residential speed limit reviewed
- 2006-2009 – Many studies, few projects
 - Eagle Drive study, Lane Striping projects
- 2010-2012 – Slow period, some experiments
 - City funded speed cushions
 - Residents unwilling to pay 50%

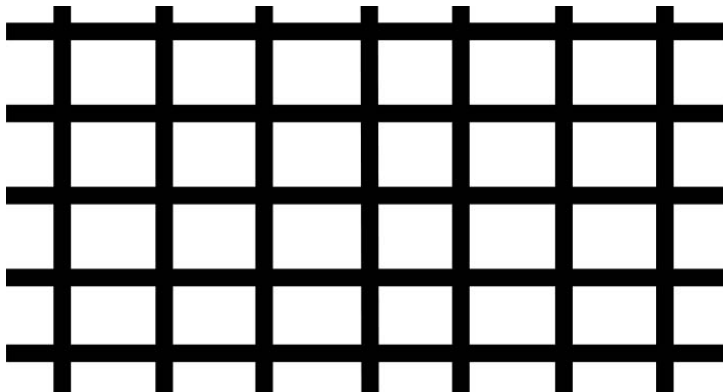
Traffic Calming Primary Goals

- Calm traffic in neighborhoods
- Reduce cut-thru traffic
- Address child safety/school issues
- Empower residents to be part of solution!



Newer Vs. Older Residential Streets

- 1999 New Standards (LCUASS)
 - Follow national trends to reduce speeds
 - Maximum length of 600 feet
 - Narrower streets
 - Curves and cul-de-sacs
 - Intersection Controls
 - Traffic circles, bulb-outs



Process – Who do I call???

- Traffic Staff ready to handle call!
 - We listen first!
 - Field review every location
 - Document studies and results
 - Propose solutions with public relations factors
- Resources
 - City website – search for traffic calming page
 - Brochure & Application
 - Staff knowledge and experience

Contact: Derek Schuler

Derek.schuler@cityofloveland.org

(970) 962-2647

NTCP in Loveland (Phase I)

- Free services provided by Traffic Division
 - Yard Signs
 - Speed Trailer
 - Data Collection – Tube Counts
 - Traffic Studies
 - 85% speeds, volume, accidents
 - Lane striping/signage mini-projects

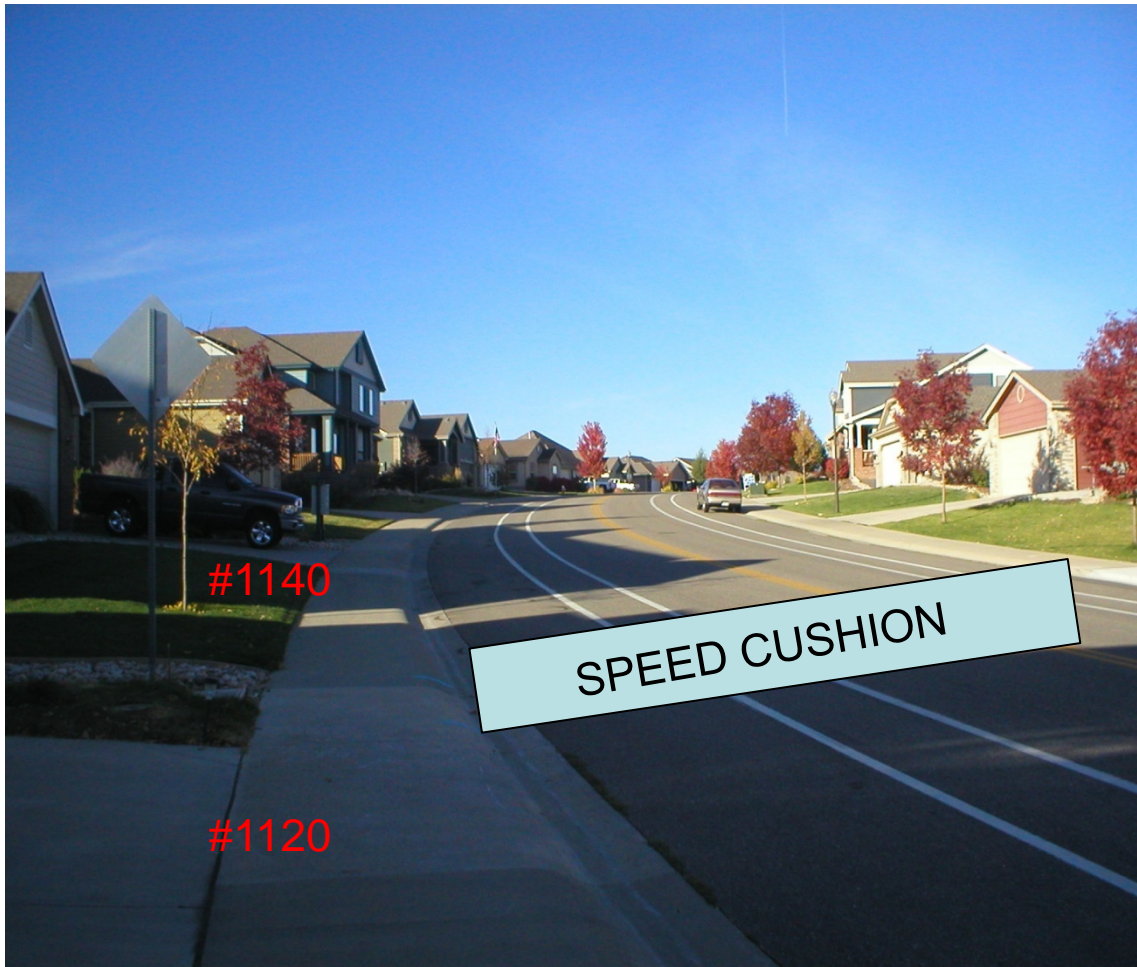


NTCP in Loveland (Phase II)

- Consideration of Physical Devices
 - Speed humps, islands, circles, etc.
 - Neighborhood discussion and petition process
 - City design and review – Fire/Police
 - 80% of residents agree?
 - 50% Cost Share of Neighborhood required



Example: 50th Street Traffic Calming Study Proposed Speed Cushion Location (also note lane striping)

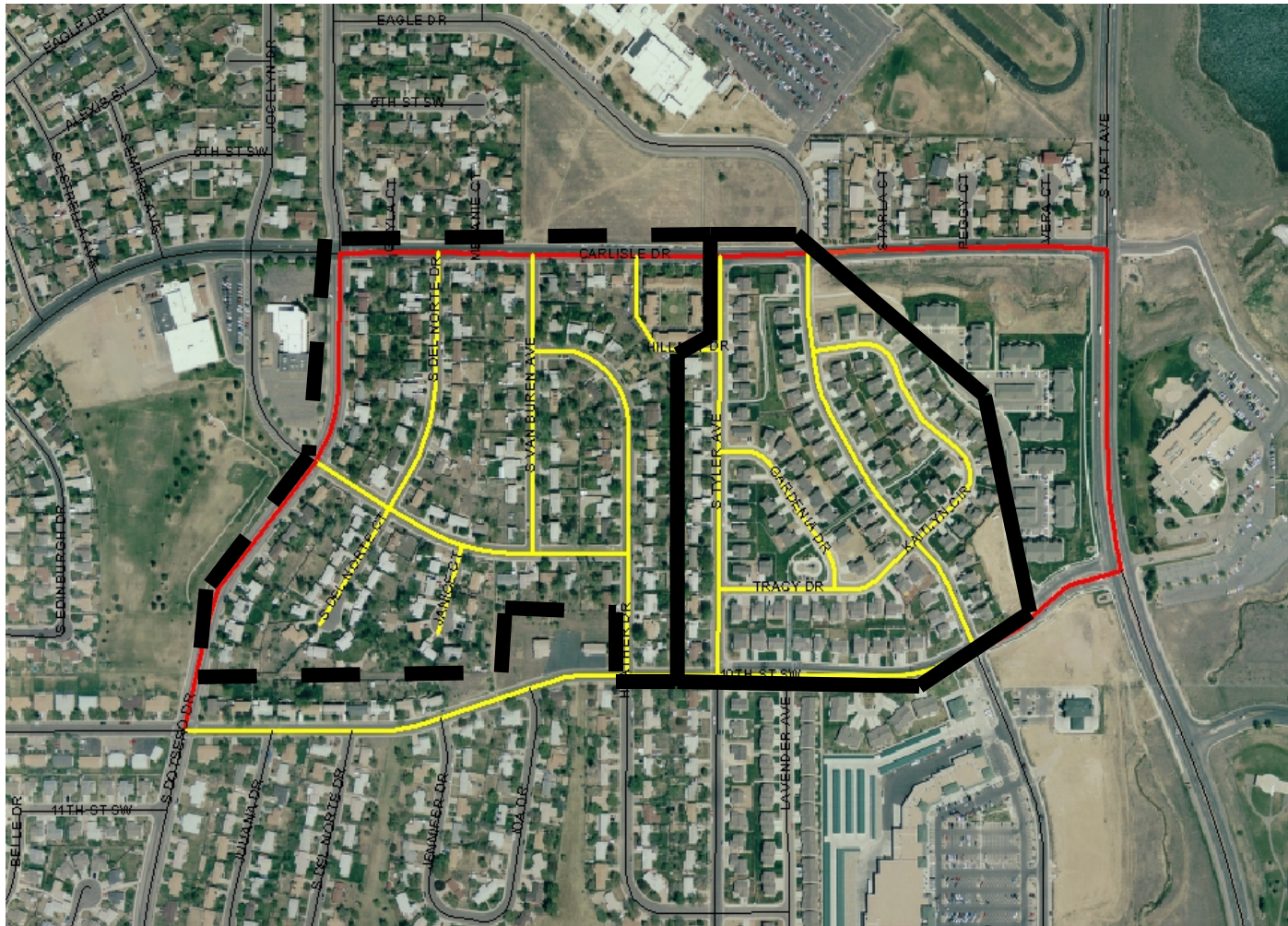


Comments or Questions?

Contact Derek Schuler,
Loveland Traffic Operations
schuld@ci.loveland.co.us
(970) 962-2647

December 2010

Example: Eagle Drive Traffic Calming Study Impact Area Map



-  Minimum Impact Area
-  Maximum Impact Area
-  Local Streets
-  Minor Collector Streets
-  Major Collector or Arterial Streets

Revised – 10/24/06



What is traffic calming?



Traffic Calming reduces the negative impacts of traffic on neighborhood streets. We address issues such as

- Speeding
- High traffic volumes
- Cut-thru traffic
- Accidents
- Safety concerns

Streets classified as *Local* or *Minor Collector* qualify for this program.

Larger streets do not.



Contact information:
 Derek Schuler
 105 W. Fifth St.
 Phone: (970) 962-2647
 Fax: (970)962-2907
 Email: Schuld@ci.loveland.co.us

Visit us on the web at:



Sign the Traffic Treaty!

Be a part of the solution by:

- driving slowly & courteously
- acting like a guest in all neighborhoods
- making our neighborhoods safer & friendlier by driving the speed limit

Sign the Treaty on our website, at
www.ci.loveland.co.us/PublicWorks/Traffic/Traffic-calming-Treaty.htm

Or call 962-2647 for a paper copy.



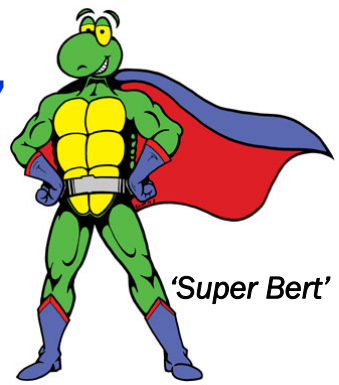
Loveland Neighborhood Traffic Calming Program



Thank you for slowing down in our town!



**TOGETHER,
WE CAN
SOLVE THE
PROBLEM!**



'Super Bert'



How do I start the Traffic Calming process?

1. Submit Traffic Calming Application to the City. If you need one, call 962-2647.
2. City will suggest Phase 1 options.
3. If the neighborhood wants more than Phase 1, we can explore Phase 2.
4. The City & the Neighborhood Representative conduct neighborhood meetings as needed.
5. City ranks projects for funding.
 - 80% of the petition area signatures are required to move forward
 - Neighborhood puts 50% of the cost for the project in the council packet.
6. The project is reviewed by City Staff.
7. Top projects* are presented to City Council for consideration. (*high-ranking, with petition & \$\$\$ ready)
8. If approved, the device is constructed usually by a contractor.



How are projects chosen?

Phase 2 Project Ranking for Funding includes the following:

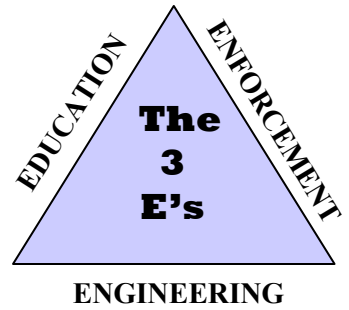
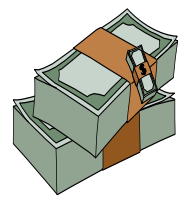
- speed
- accidents
- traffic volume
- high pedestrian locations



Who pays for this?

Phase 1 solutions - City pays 100%

Phase 2 solutions - City and Neighborhood share the cost 50/50. City Council approval is needed.



Education, Engineering & Enforcement all work together in solving traffic problems, and so can YOU!

Sign the Traffic Treaty!

Phase 1

Education alerts people to ways they can help ease traffic problems.

- Traffic Treaty, (see back)
- Walking School Bus
- 'Slow Down' yard signs. Free signs at 105 W. Fifth St. 2 per household
- Signs & markings
- SMART radar trailer— (Available in non-winter months)



Enforcement - police patrols, as available. Call 962-2280 to request.



Phase 2

Engineering devices that alter the street physically. They can:

- reduce speed
- decrease number of cars
- improve safety

Phase 2 Examples: speed humps, raised crossings, & dips. Engineering devices have pros & cons. We will be glad to discuss them with you. **Note that stop signs are not used for traffic calming.**



Please send your application in to begin the process.



CITY OF LOVELAND
PUBLIC WORKS DEPARTMENT

Administration Offices • 410 East Fifth Street • Loveland, Colorado 80537
(970) 962-2555 • FAX (970) 962-2908 • TDD (970) 962-2620

AGENDA ITEM: 2
MEETING DATE: 11/13/2012
TO: City Council
FROM: Keith Reester, Public Works
PRESENTER: Keith Reester, Public Works

TITLE: Public Works Service Center Design Project and Construction Plan

RECOMMENDED CITY COUNCIL ACTION: Review the design and funding

DESCRIPTION:

This study session will cover the programming process and design that has been completed to date for the proposed Service Center expansion for Public Works Operations.

BUDGET IMPACT:

- Positive
 Negative
 Neutral or negligible

Staff will review the current funding for the project from both enterprise funds and the general fund; changes to the scope of the project may have impacts on the capital projects or Capital Expansion Fee (CEF) budgets.

SUMMARY: The Public Works Department has been working over the last year to complete programming and design for the long proposed Service Center expansion for Public Works Operations. This study session will cover the programming process and design that has been completed to date. Staff will also review the funding streams for this project and confer with Council on direction to bid the project at the end of Q1 2013.

The presentation will include a review of the design by RNL Design the contracted architect for the project.

REVIEWED BY CITY MANAGER: *William D. Cabell*

LIST OF ATTACHMENTS:

PowerPoint Presentation



RNL_{PL15}



City of Loveland

New Public Works Facility



City Council Workshop
November 13, 2012

Tonight's Agenda

- Review history of “Service Center – Phase 3”
 - Outcomes of a Public Works Facility Project
- Overview budget and constraints
- Design
 - Review design program to date
 - Review current design through schematic
- Identify path forward and timeline

Loveland Service Center 2009-2012



Project Team

- City of Loveland
 - Public Works, W&P, Parks, IT
- Design Team
 - RNL
 - Maintenance Design Group



RNL

Project History

- Service Center 1980's
 - City of Loveland/Thompson Schools
 - Water & Power Complex/Warehouse
 - School District Building/Canopy
- Service Center 1990's
 - Special Review
 - Parks Shop Construction
 - Fleet Building Issues
- Service Center 2000's
 - District becomes a tenant/Moves out – 2009
 - Here we are
 - Stormwater project deferment



Current Public Works Facilities

- MOC (Maintenance Operations Center)
 - 5th Street
 - Streets, Solid Waste, Stormwater, Facilities, Traffic
- Sign Shop (5th Street leased)
- FAB (Fire & Administration Building)
 - Admin, PW Eng, PW ENG Stormwater, COLT
- Civic Center – PW TDR
- Service Center
 - Fleet, Stormwater Heated Storage, Paint Storage, Wash Bay, Recycle Yard, COLT Bus Storage
- Cart Storage – Railroad/3rd
- Sugar Factory (5.6 acres & building) – Salt/Sand/Mag STORAGE



Public Works Operations

Personnel

	Perm	Seas/Inter
Administration	2	0
Airport	5	1
Facilities	24	0
Fleet	14	0
PW Engineering	10	0
Solid Waste	26	5
Stormwater Eng	5	0
Stormwater Maint	7	1
Streets	17	15
TDR	4	0
Traffic	12	3
Transit	18	0
	144	25
TOTAL	169	

Equipment

Pool Cars	9
Utility	3
Van	4
Small Pick-up	26
Large Pick-up	21
Back-up Police	5
Flatbed	4
Aerial	4
Bus	10
Sweeper/Vac Loader/Milling Machine*	9
Tractor Trailer	1
Dumps/Tanks	13
Trash Truck	23
Pothole Patcher	1
Loader	3
Tractors/Paving/Other	19
Plows/Sanders	58
Rolloffs	12
Total	225
Total Trash Cart Storage (Average)	4,350 units

*Requires inside storage (water based)

Proposed Project Options

- **Public Works Service Center – Option A**
 - Streets, Solid Waste, Stormwater
 - Heated Storage (New & Remodel)
 - Training/Meeting Space
 - Canopy Truck Parking
 - Cart Wash/Storage
 - Fleet adjustments
- Wash Bay/Muck Out Bays
- Stormwater Management for Site/Site Work
- Ranch Water Upgrade
- **Option B-Plus**
 - Public Works Administration
 - PW & Stormwater Engineering

Proposed Project Issues

Budget, Budget, Budget...

Current Budget

- Solid Waste:
 - \$3,000,000
- Stormwater:
 - \$ 400,000
- General Government CEF
 - \$ 2,217,540
- Fleet Fund
 - \$600,000
- **Total: \$6,217,540**

Proposed Budget

- Solid Waste:
 - \$3,600,000
- Stormwater :
 - \$ 1,500,000
- General Government CEF
 - \$ 4,317,540
- Fleet Fund
 - \$1,600,000
- Water & Power
 - \$380,000
- **Total: \$11,451,540**

GAP to Construct Option B: \$2,131,030

Project Cost Estimate (11/1/12)

	Base Project	Option B Project
Stormwater, Streets Solid Waste Building & Shops	\$ 4,240,160	
Add PW Engineering/Administration Offices		\$ 1,254,674
Cartwash & New Heated Storage	\$ 546,431	
Remodel Existing Canopy	\$ 272,523	
Remodel Existing Heated Storage (PW 4/W&P 7 Bays)	\$ 222,875	
Site Work	\$ 2,095,413	
Mariano Exchange Ditch Flood Control	\$ 261,896	
Furniture, Fixtures & Equipment (FFE)	\$ 375,000	\$ 345,000
Total Construction Estimate	\$ 8,014,297	\$ 1,599,674
Citywide Wash Building and Muck Out Bays	\$ 1,329,191	
Ranch Water Station Upgrades/Modification	\$ 181,900	
10% Contingency (All Construction Option A)	\$ 952,539	\$ 159,967
Design & Engineering	\$ 975,000	
Easement and/or Land Acquisition	\$ 25,000	
Total Project A	\$ 11,477,927	
Total Project with Option B		\$ 13,582,569
(Project A Less Wash Building & Ranch H2O)	\$ 9,966,836	

What Next?

- MOC Rehab – Price Tag: \$500,000 (2014/15)
 - Traffic Operations Center
 - Sign Shop
 - COLT
 - Facilities Management





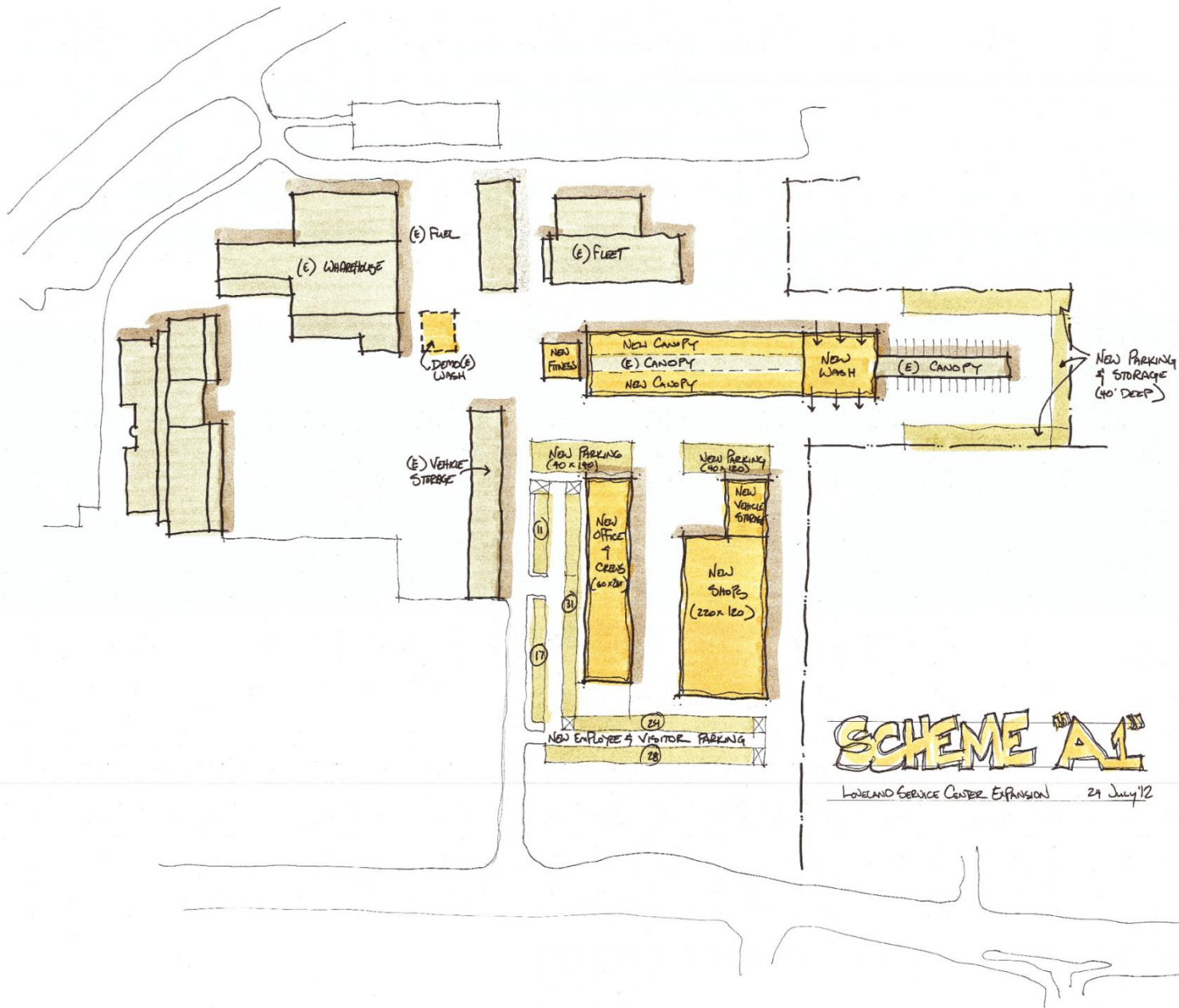
THE PUBLIC WORKS BUILDING PROJECT – DESIGN CONCEPTS

ENCLOSED AREAS:

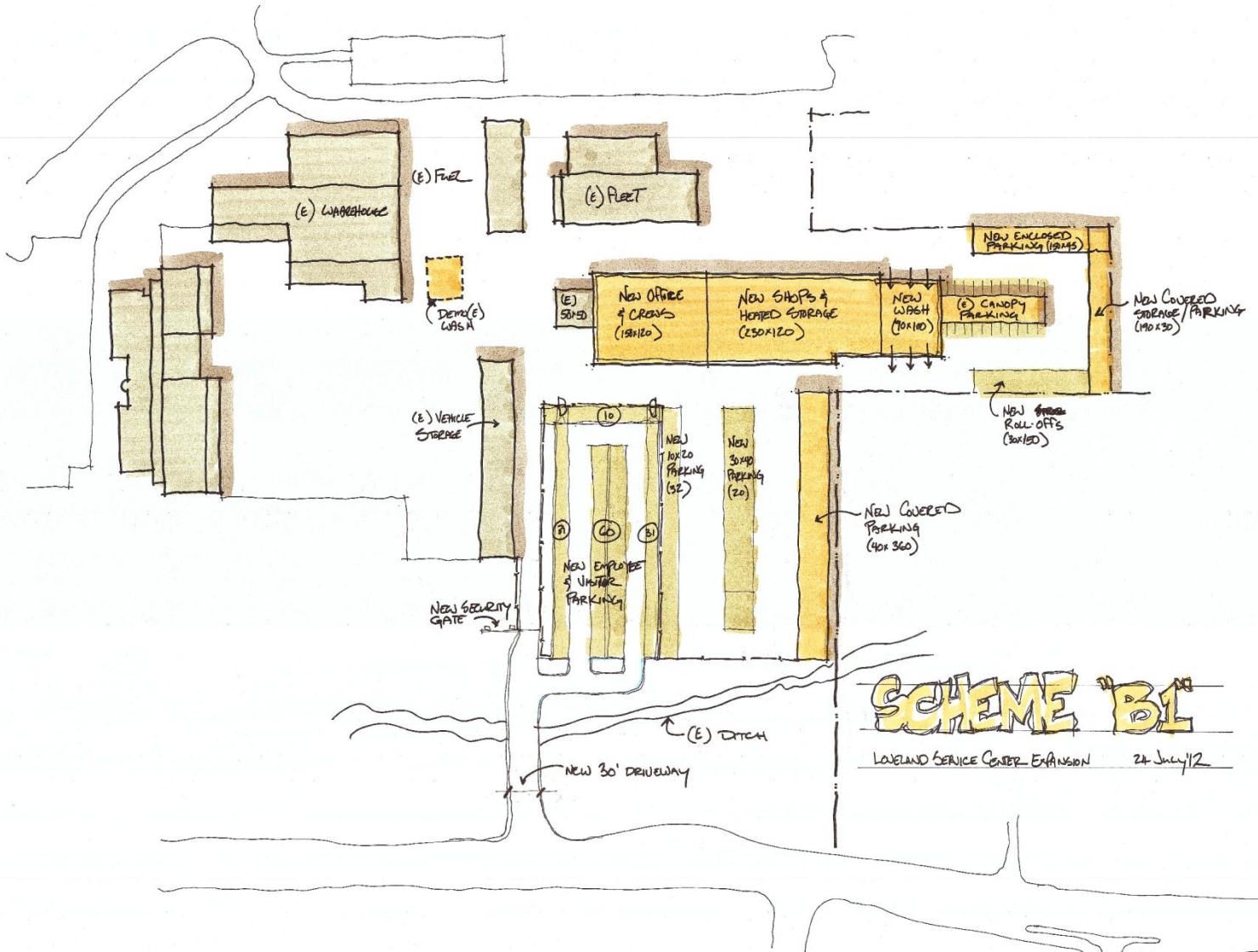
Office & Crew Areas:	16,929 sf
Shops & Vehicle Storage:	27,838 sf
Wash Areas:	1,872 sf
<u>Heated Vehicle Parking:</u>	<u>4,972 sf</u>
Total:	51,611 sf

EXTERIOR AREAS:

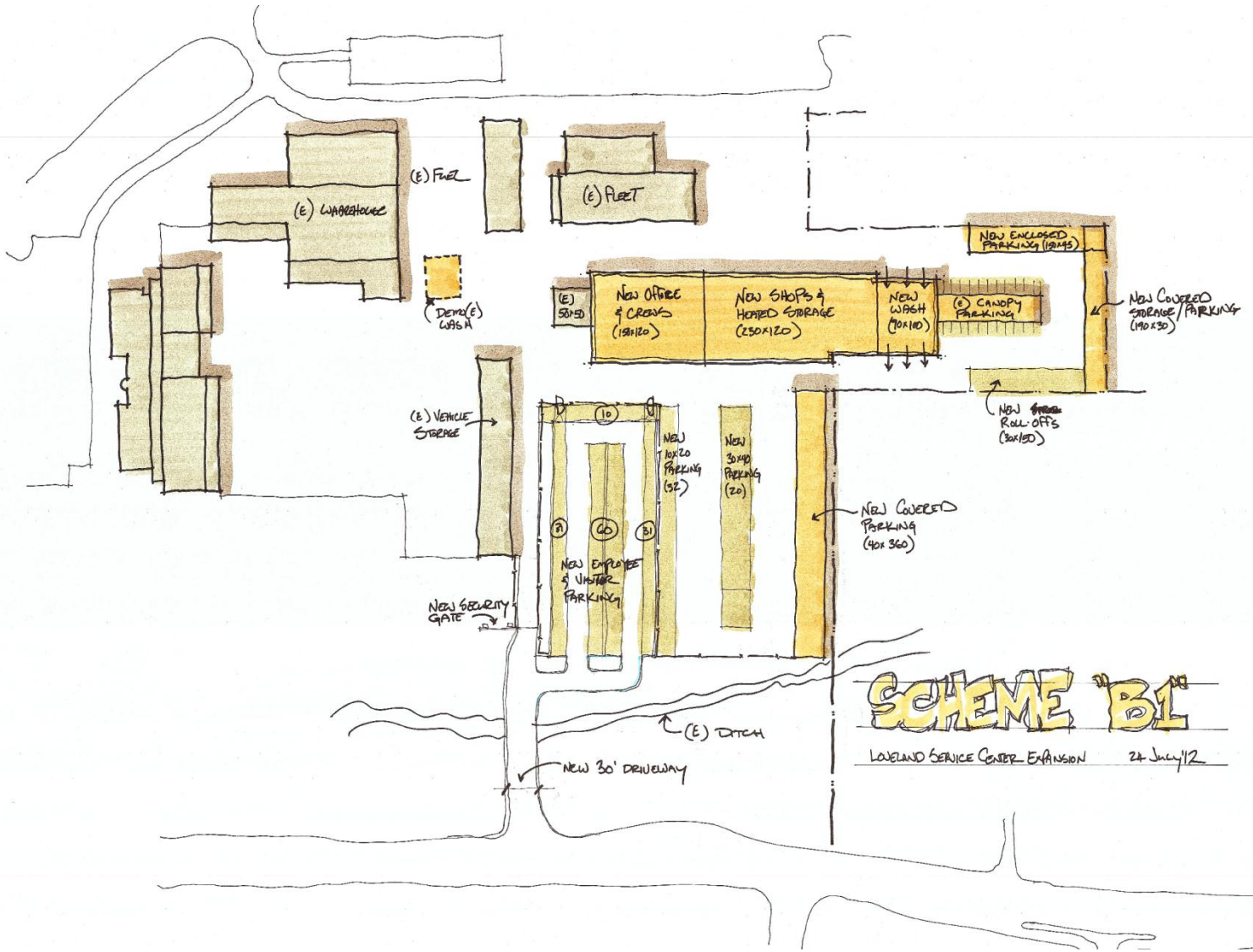
Covered Parking:	24,508 sf
Covered Storage:	1,100 sf
Truck/Vehicle Parking:	34,280 sf
Employee/Visitor Parking:	46,580 sf
Yard Storage:	621,400 sf

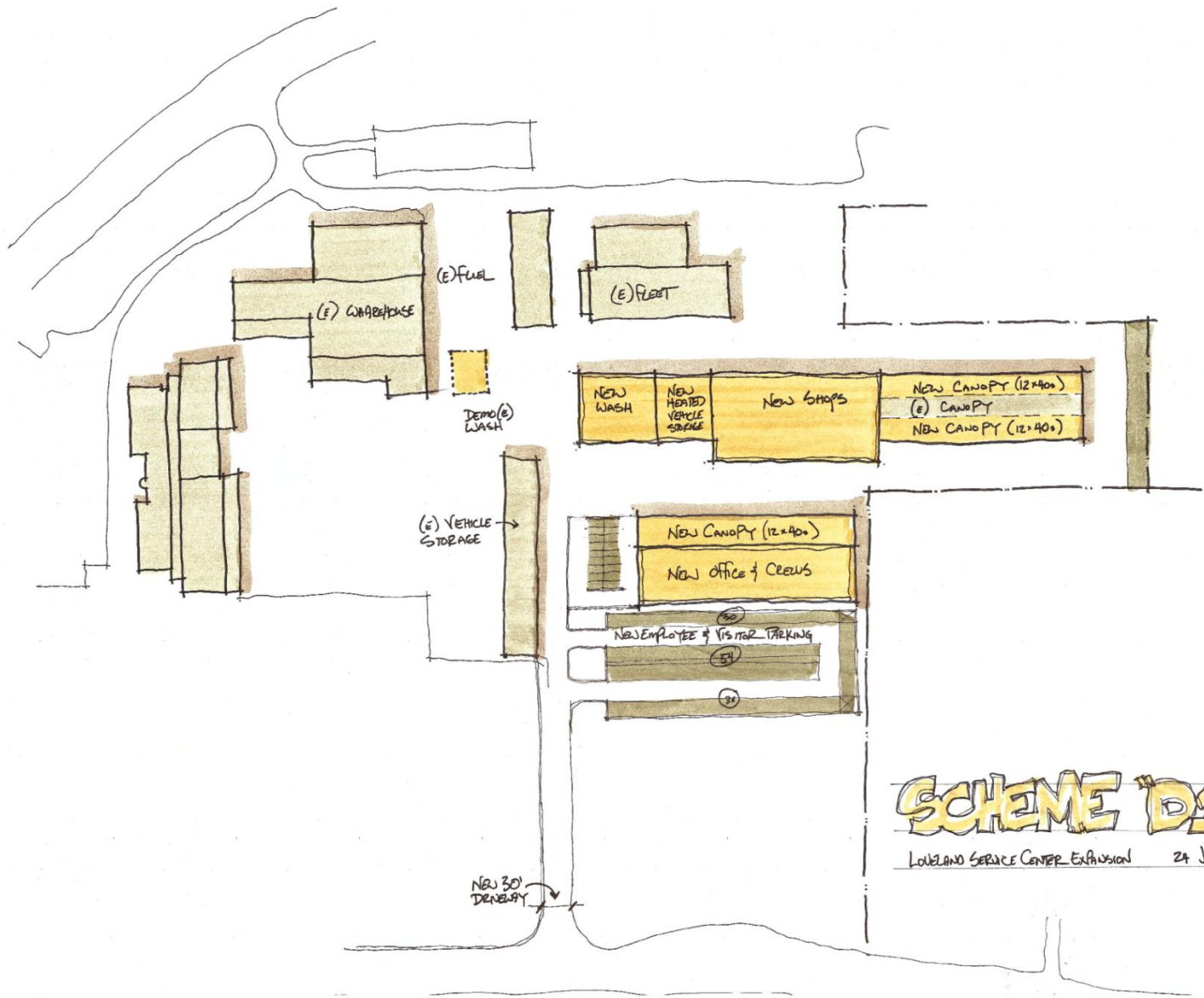


SCHEME A1
LOWLAND SERVICE CENTER EXPANSION 21 July 12



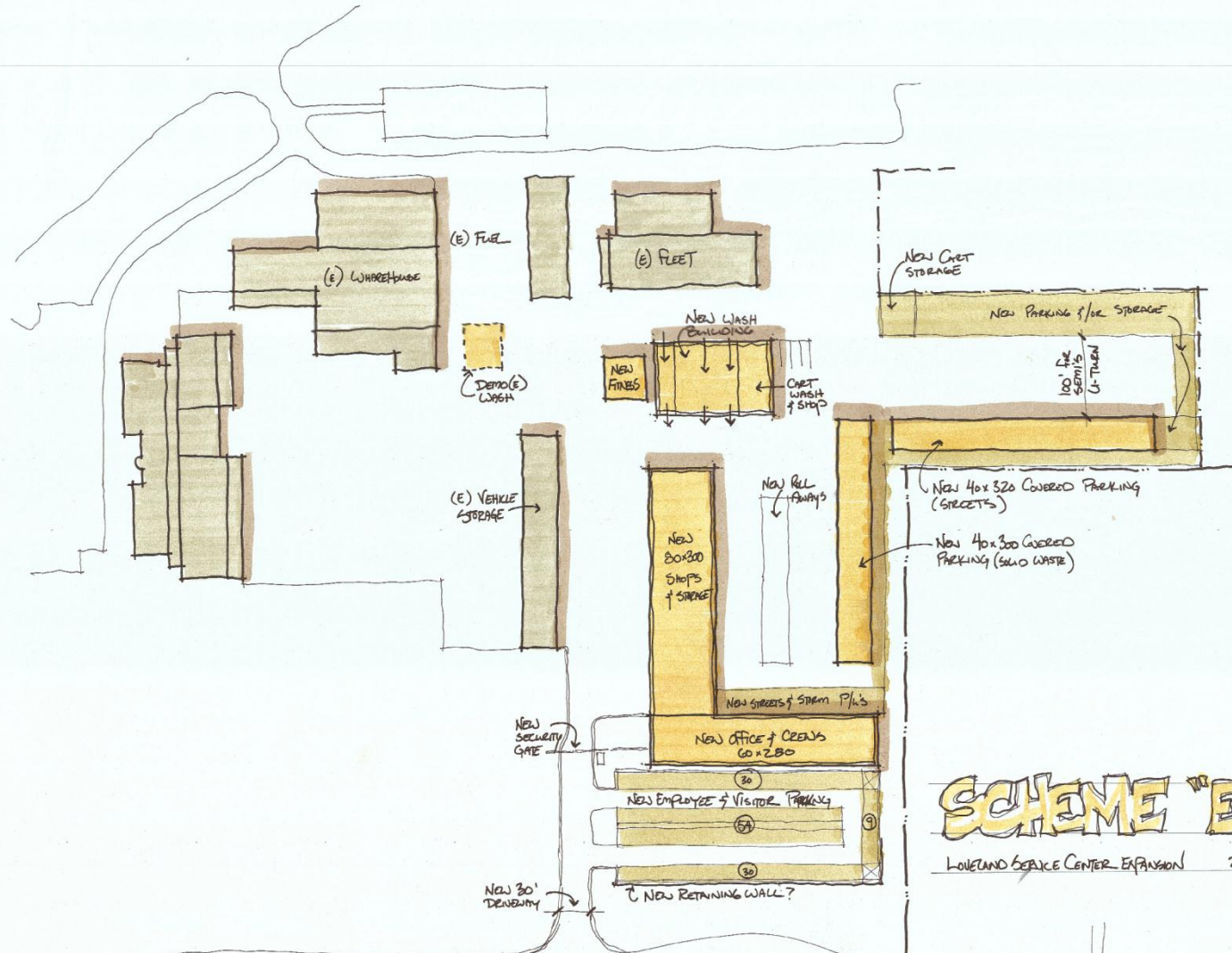
SCHEME B1
LOVELAND SERVICE CENTER EXPANSION 24 July 12



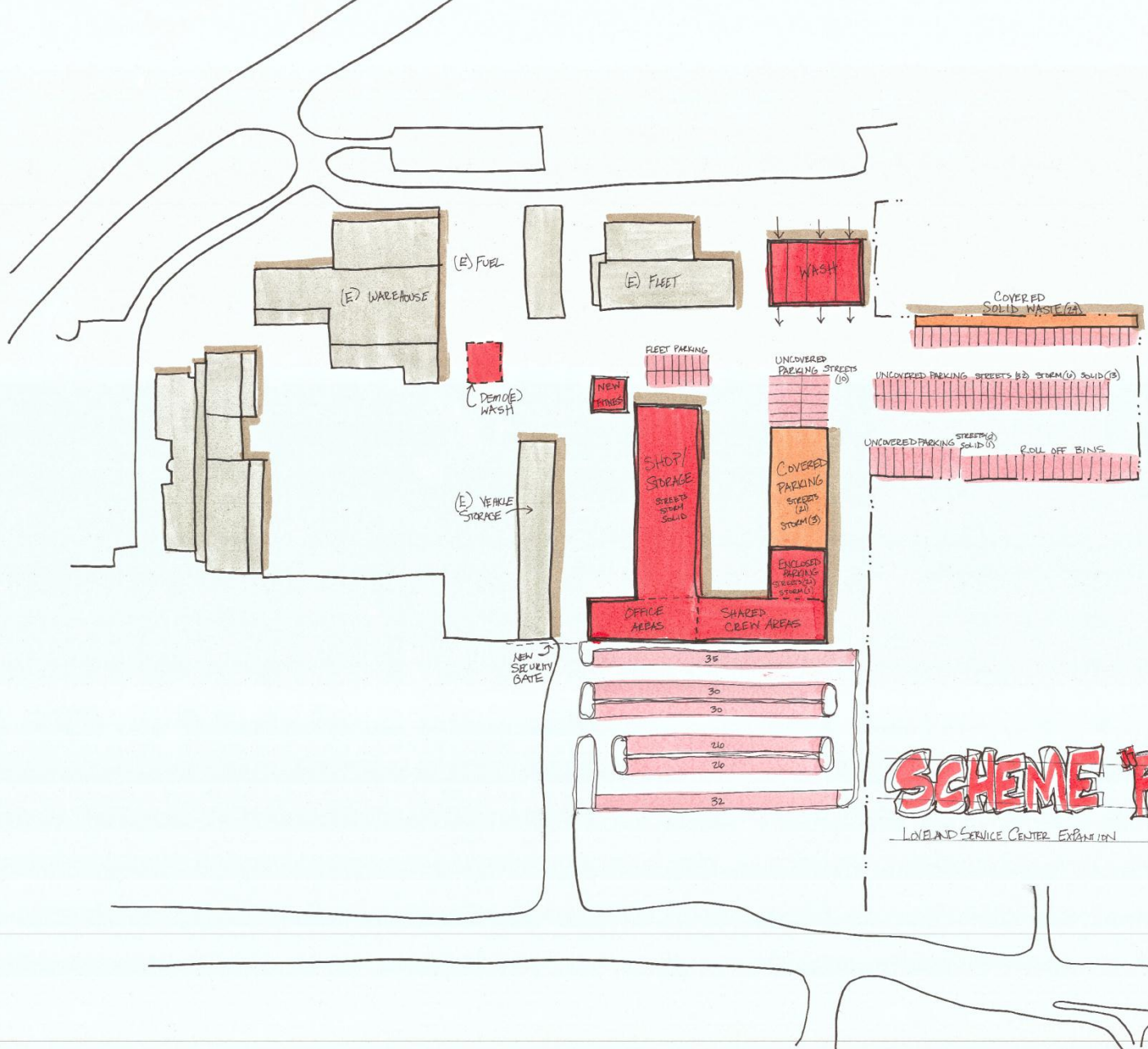


SCHEME 'D1'

LOVELAND SERVICE CENTER EXPANSION 24 July 12

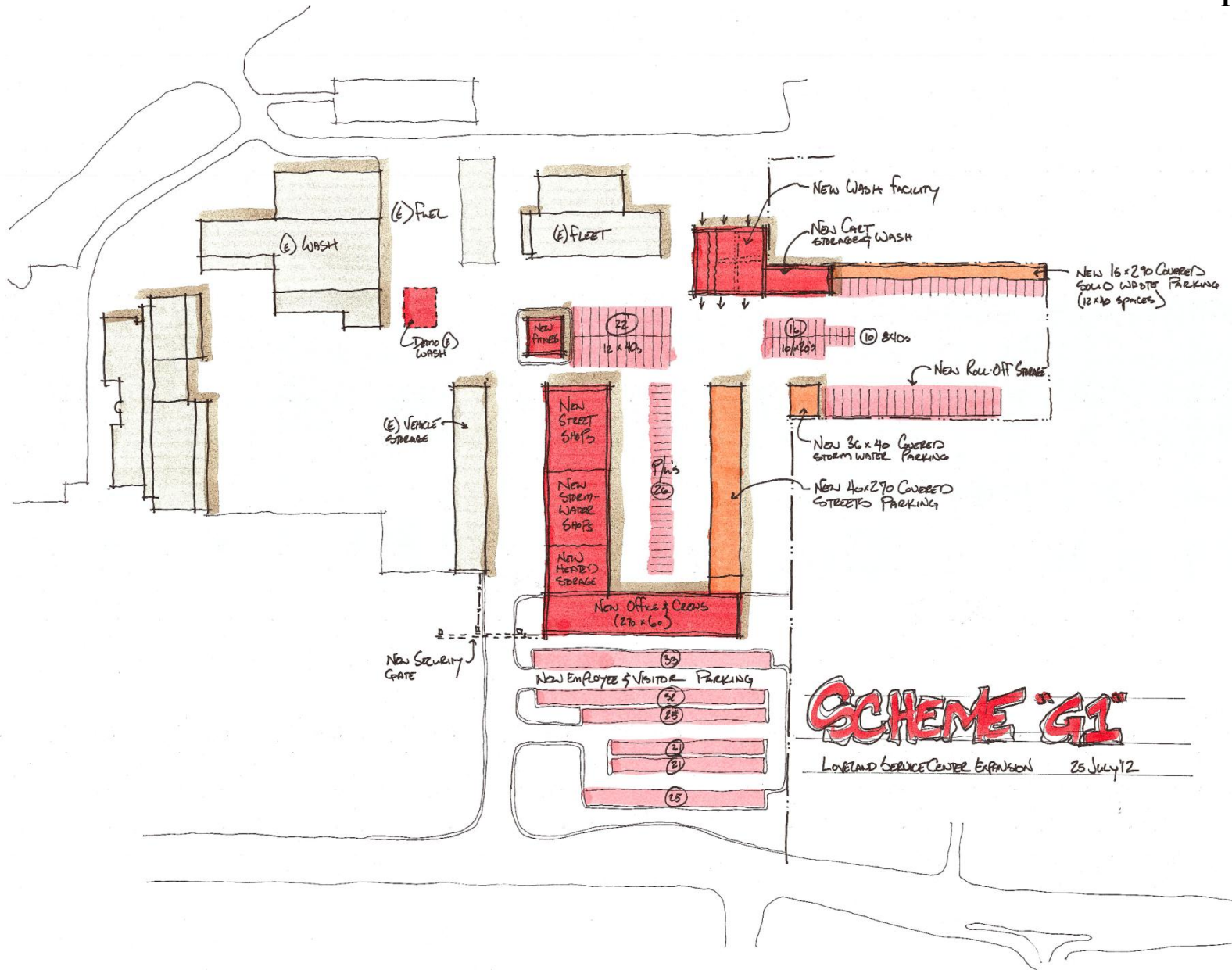


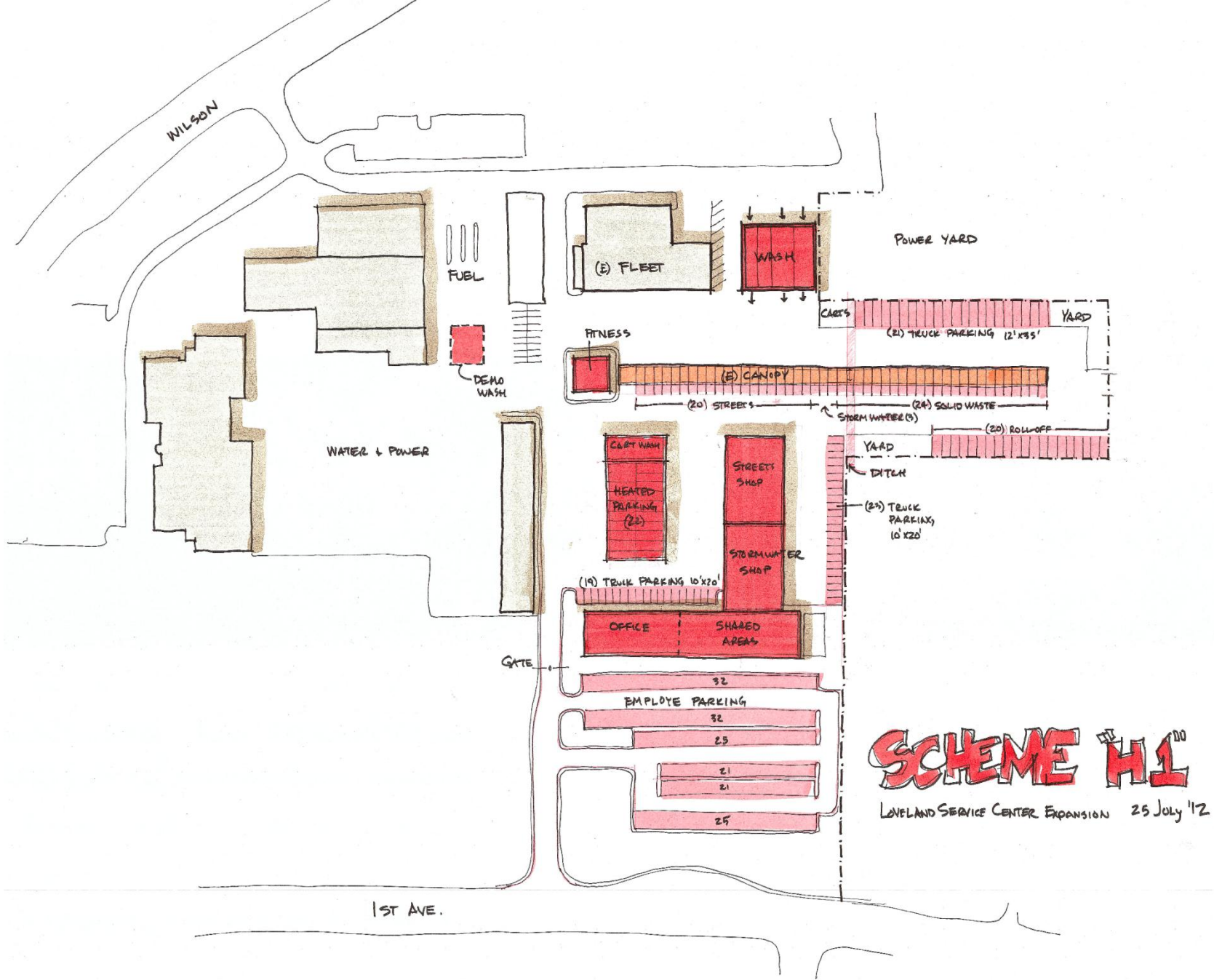
SCHEME "E1"
LOWLAND SERVICE CENTER EXPANSION 24 July '12

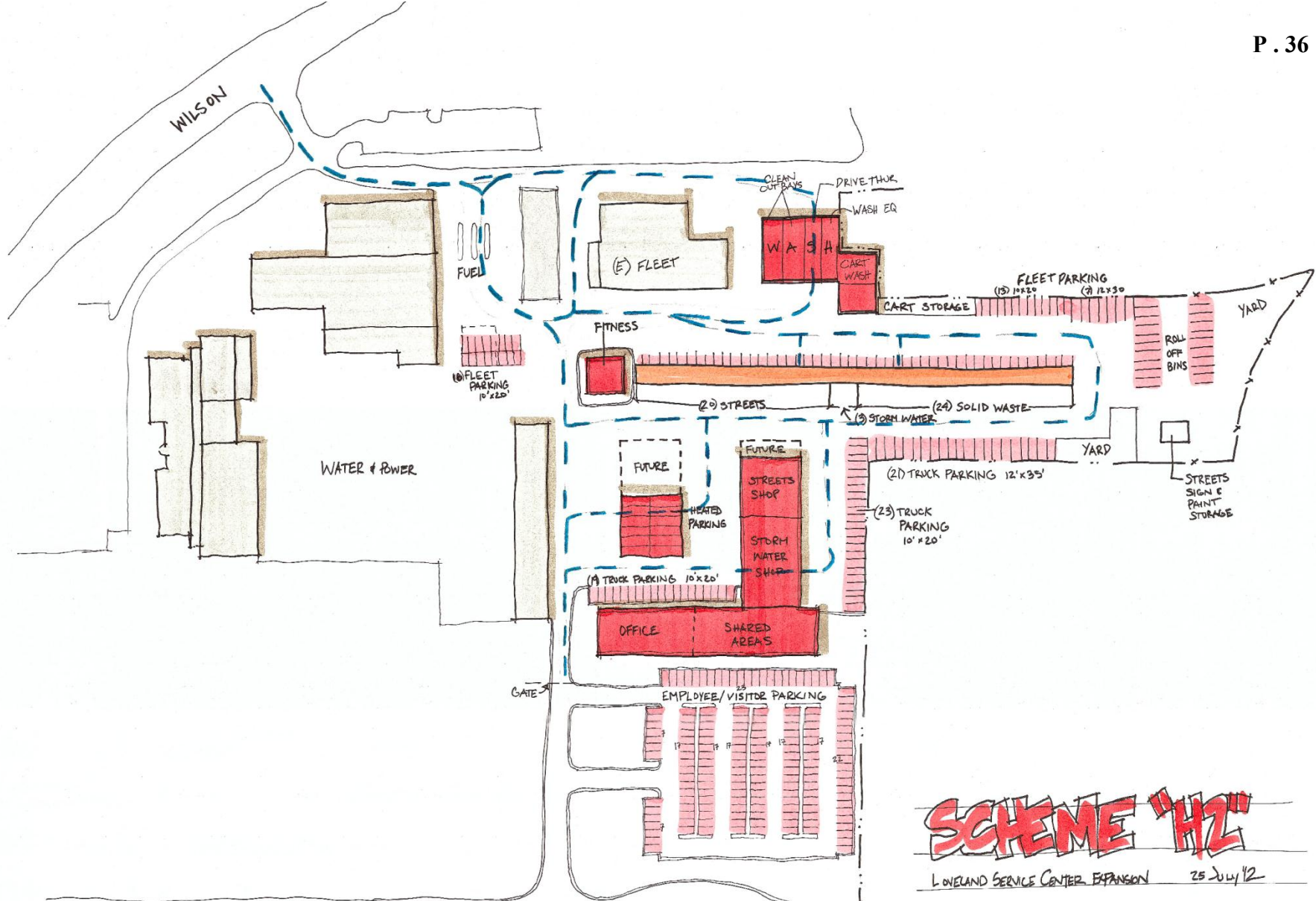


SCHEME "FL"

LOVELAND SERVICE CENTER EXPANSION 25 JULY '12







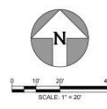
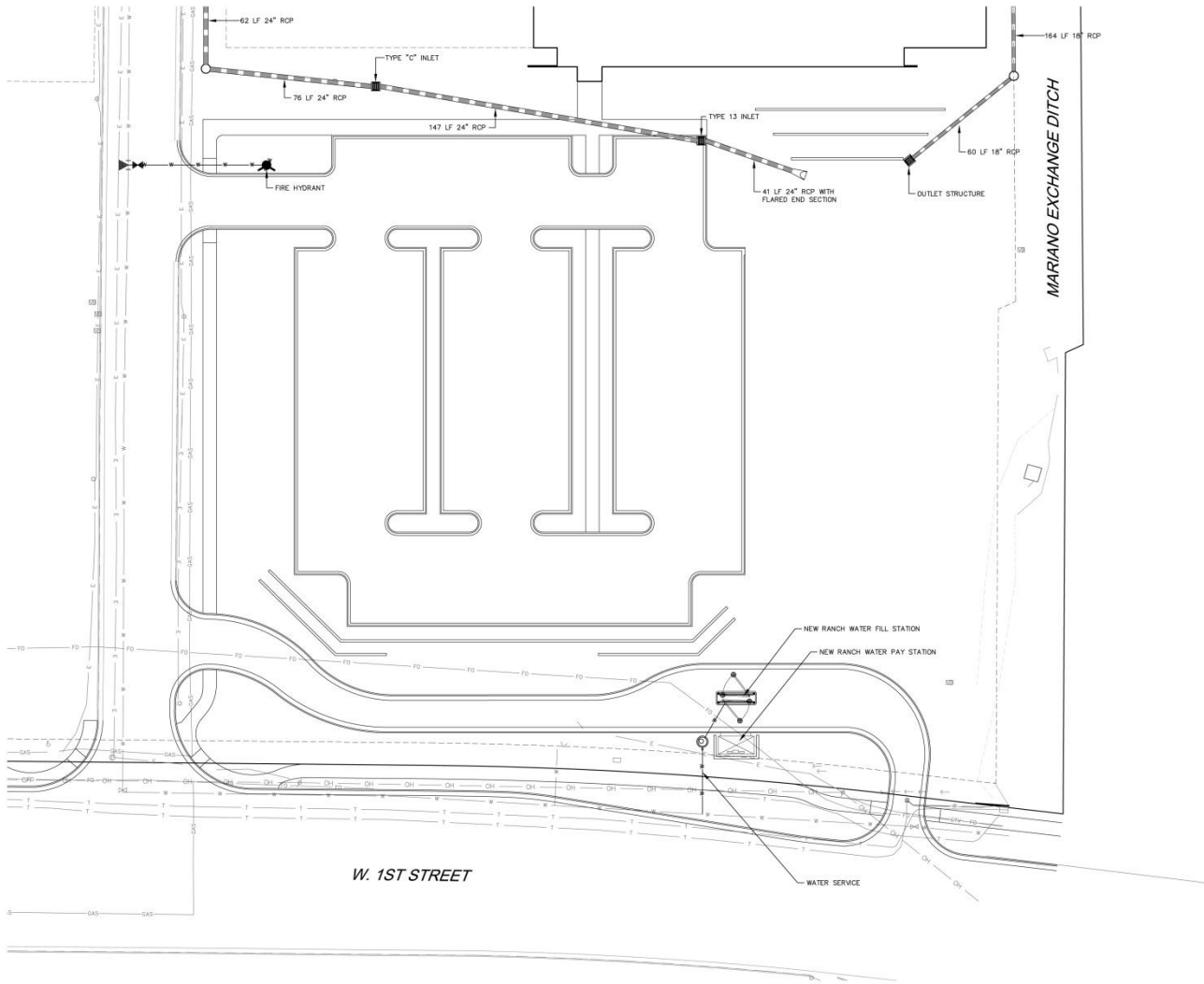
SCHEME "H2"

LOVELAND SERVICE CENTER EXPANSION 25 JULY 12

1ST AVE.



New Loveland Service Center Aerial



COV. - BLUE SKY ENGINEERING, LLC
 LANDSCAPE - GREEN SCAPE DESIGNS
 STRUCTURAL - HANNA & HANNA ENGINEERS, INC.
 ARCHITECTURAL - IRL DESIGN
 EQUIPMENT - MAINTENANCE DESIGN GROUP
 MEP - IMA CONSULTING ENGINEERS, INC.

**CITY OF LOVELAND
 LOVELAND SERVICE
 CENTER EXPANSION**
 200 N. WILSON, LOVELAND, CO 80537

SCHEMATIC DESIGN PACKAGE

NOT FOR CONSTRUCTION

NO.	REVISION/SUBMISSION	DATE

PROJECT NO: 3412.01
 DATE: 11/08/2012
 SCALE: 1" = 20'

New Ranch Water Fill Station

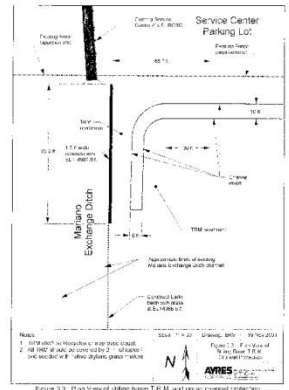
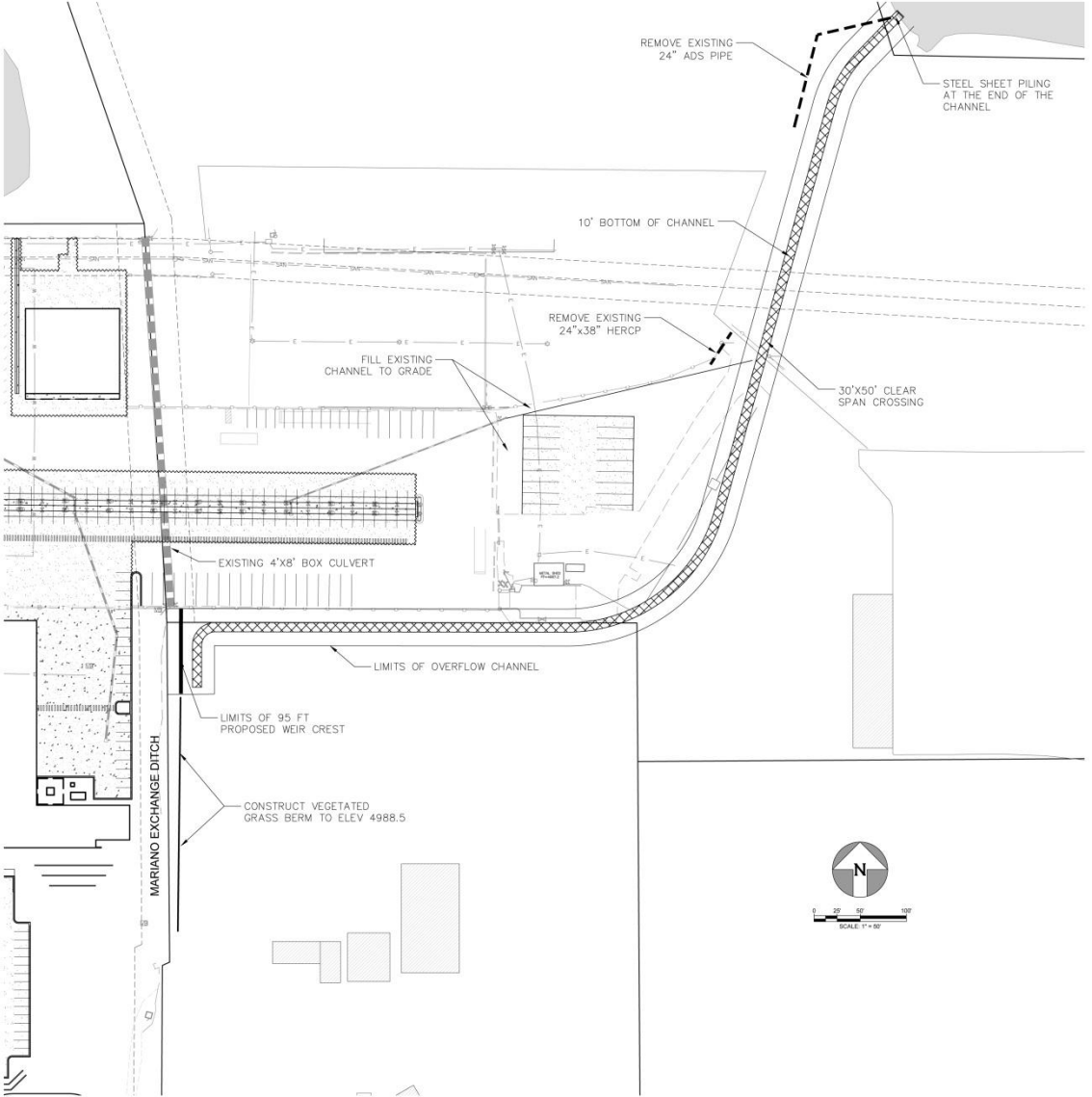
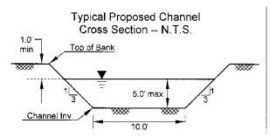


Figure 3.3: Plan View of existing T.R.M. and proposed channel protection



ESTIMATED QUANTITIES

Seeding/Mulching/Temporary	1 LS
Soil Prep	1 LS
Strip and Grub and dispose	1 LS
Recyclx - TRM	506 SY
Earthwork (excavate, haul, disp)	7220 CY
Compacted fill	1500 CY
Steel Sheet Piling	71 SY
Concrete Cutoff Wall	32 CY
30'x50' Bridge Crossing	1 LS

NOTES

1. THE INFORMATION SHOWN ON THIS PLAN IS FROM THE CONCEPTUAL DESIGN REPORT PREPARED BY AYES ASSOCIATES IN 2001.
2. THE DESIGN TEAM IS CURRENTLY REVISITING THE HYDRAULICS OF THE CHANNEL AND NEW DESIGN ALTERNATIVES. IT IS ANTICIPATED THAT THERE WILL BE CHANGES TO THE SIZE OF THE CHANNEL AND TYPE OF VEHICLE CROSSING. PLEASE CONTACT SAM ELIASON AT 970-277-7420 FOR UPDATED INFORMATION AS IT RELATES TO PREPARING COST ESTIMATES FOR THIS FACILITY.

CIVIL: BLUE SKY ENGINEERING, LLC
 LANDSCAPE: GREEN SCAPE DESIGN
 STRUCTURAL: HANSEN & HERTZ ENGINEERS, INC.
 ARCHITECTURAL: PNL DESIGN
 EQUIPMENT: MAINTENANCE DESIGN GROUP
 MEP: MAX CONSULTING ENGINEERS, INC.

**CITY OF LOVELAND
 LOVELAND SERVICE
 CENTER EXPANSION**
 200 N. WILSON, LOVELAND, CO 80501

NOT FOR CONSTRUCTION

No.	REVISION/SUBMISSION	DATE

PROJECT No. 3412.01
 DATE: 11 October 2013
 SCALE: 1" = 50'

MARIANO EXCHANGE
 DITCH PLAN & SECTION

New Ranch Water Fill Station

00-C800

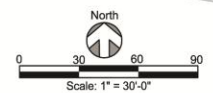


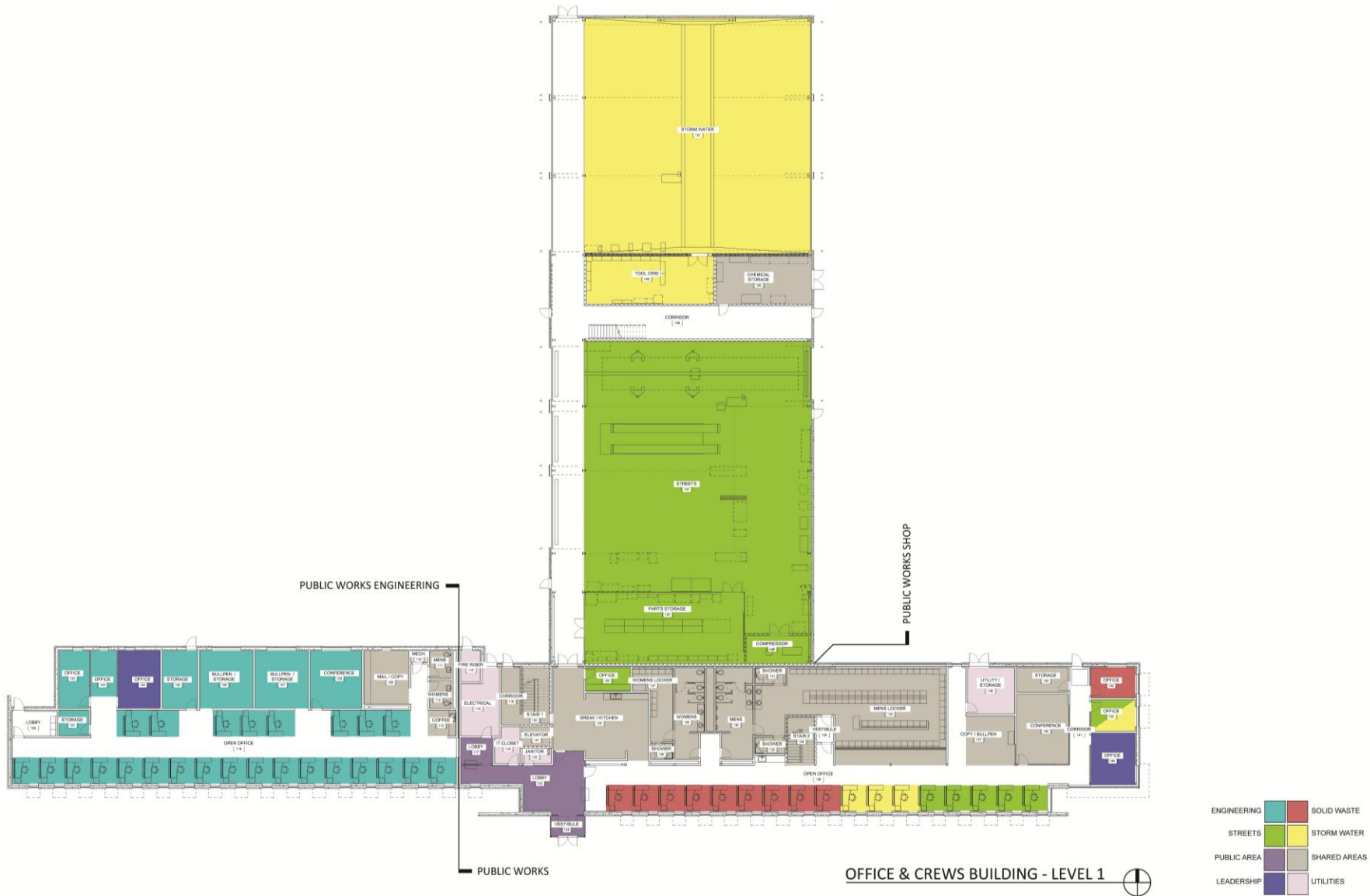
New Public Works – From 1st Street



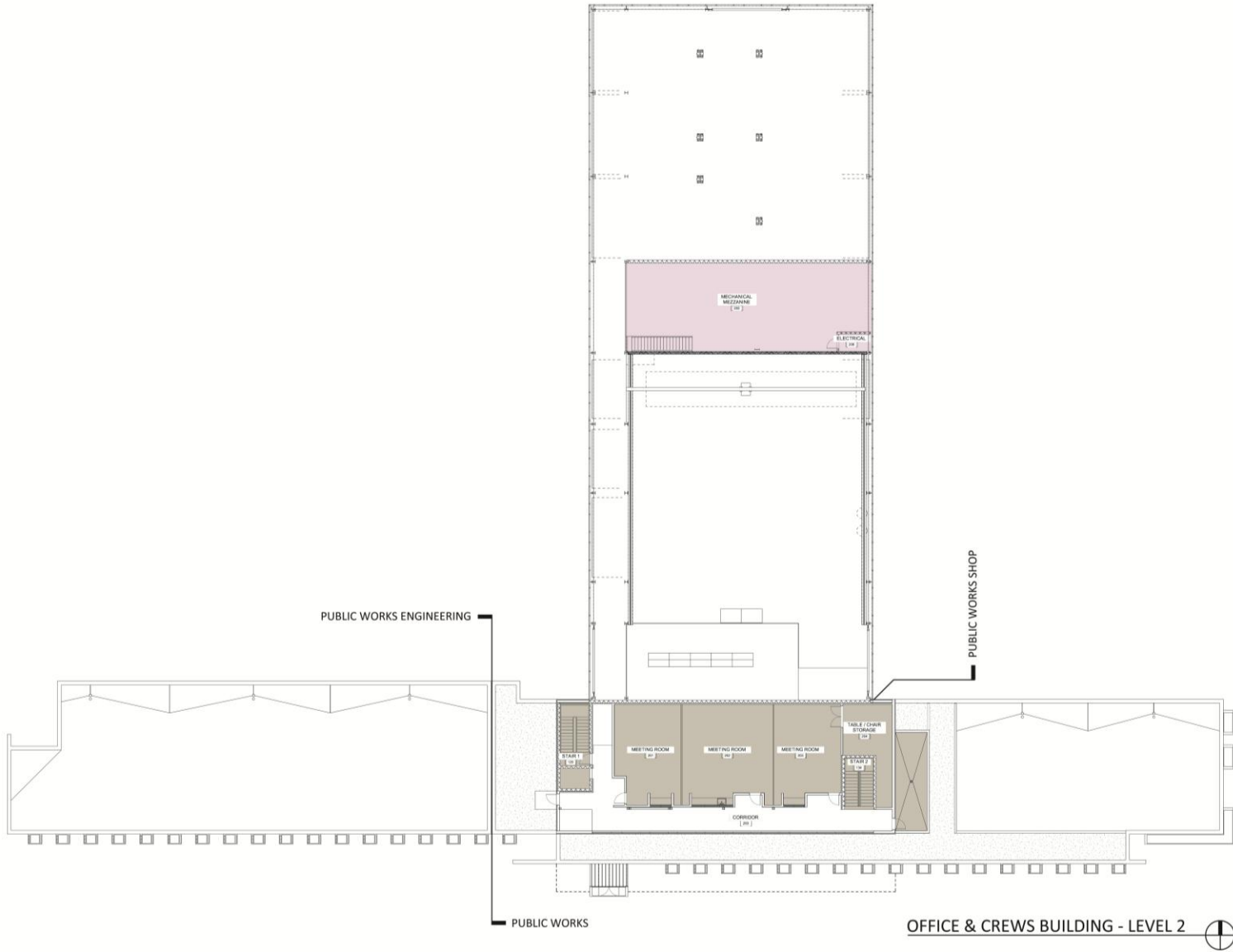
W. FIRST STREET

Landscape Illustrative

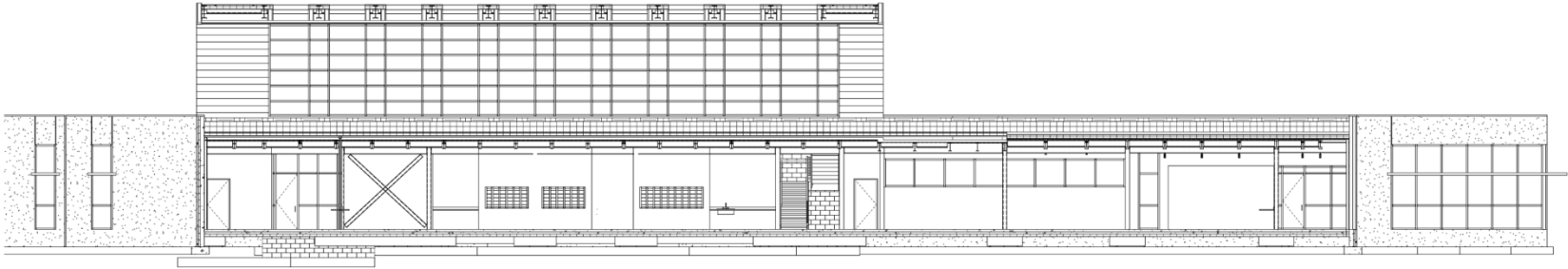




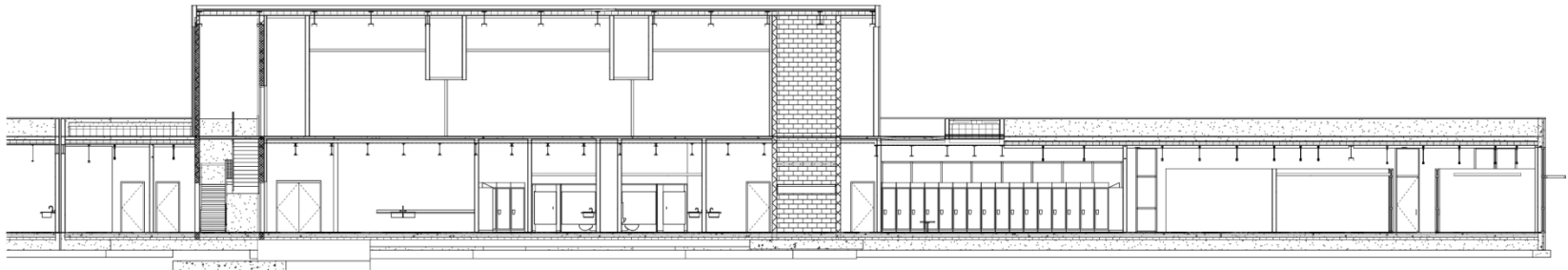
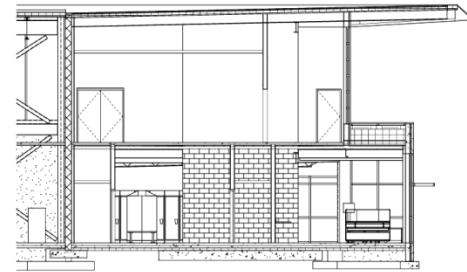
Building 1 - Plans

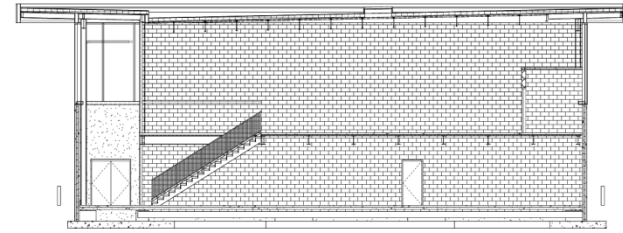
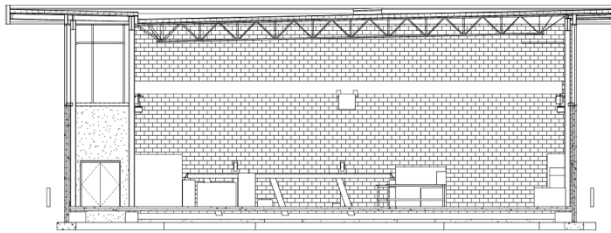


- ENGINEERING
- STREETS
- PUBLIC AREA
- LEADERSHIP
- SOLID WASTE
- STORM WATER
- SHARED AREAS
- UTILITIES

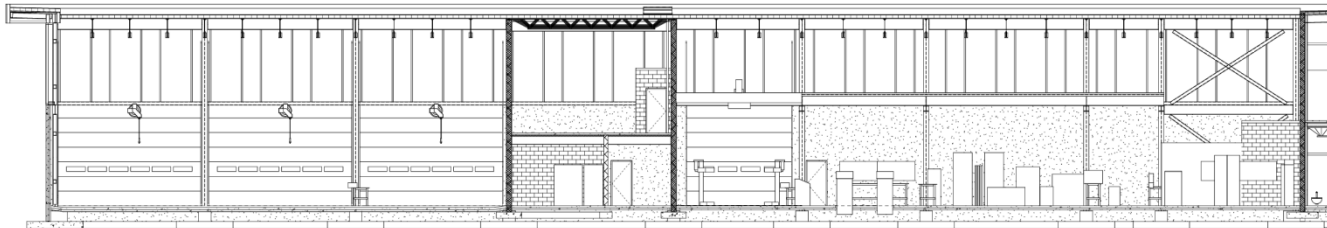


Building 1 – Admin Sections





Building 1 – Shops Sections





New Public Works Entry



New PW Shops



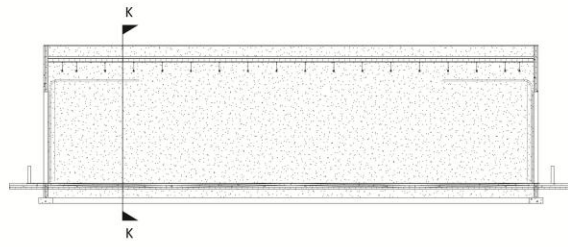
New PW Open Office Interior



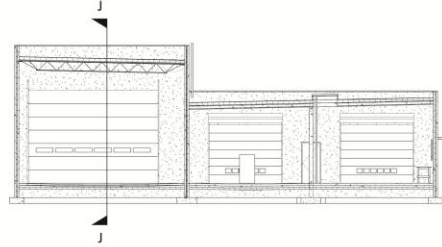
New PW Lobby Interior



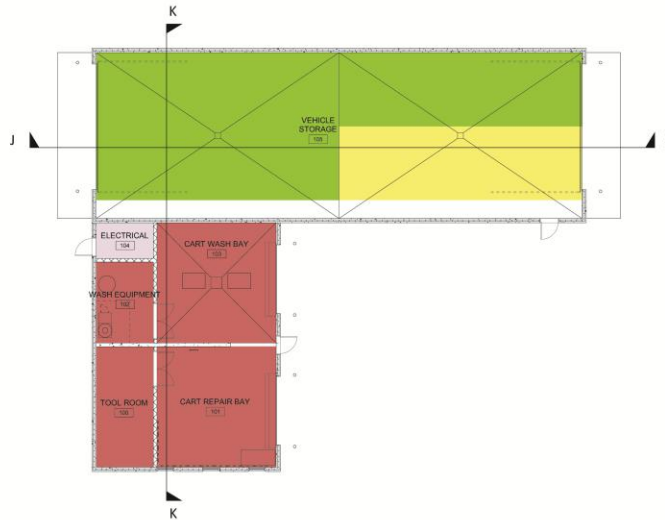
New Training Room(s) Entry



SECTION: J



SECTION: K



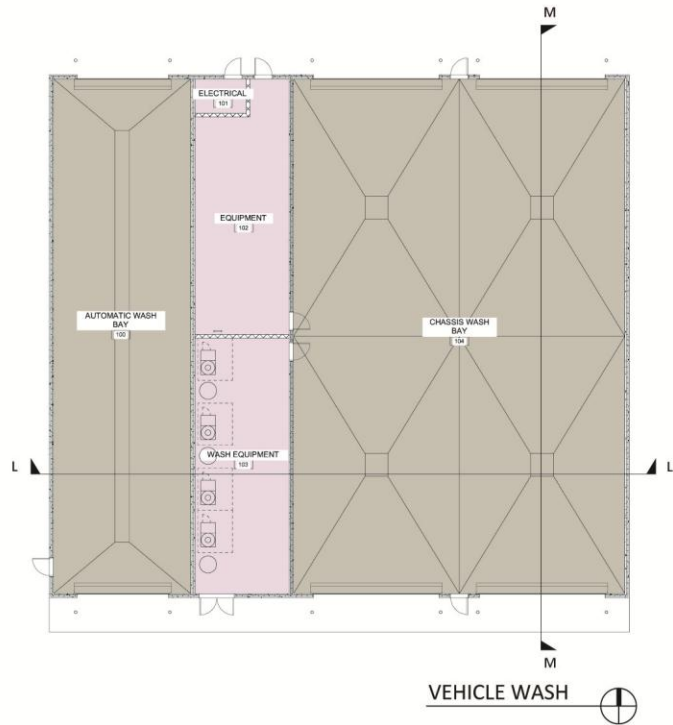
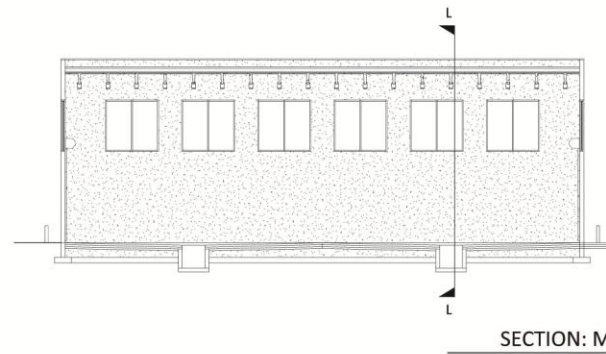
CART WASH & VEHICLE STORAGE

Building 2 – Plan & Sections

ENGINEERING	SOLID WASTE
STREETS	STORM WATER
PUBLIC AREA	SHARED AREAS
LEADERSHIP	UTILITIES



New PW Cart Wash & Heated Storage



Building 3 – Plan & Sections

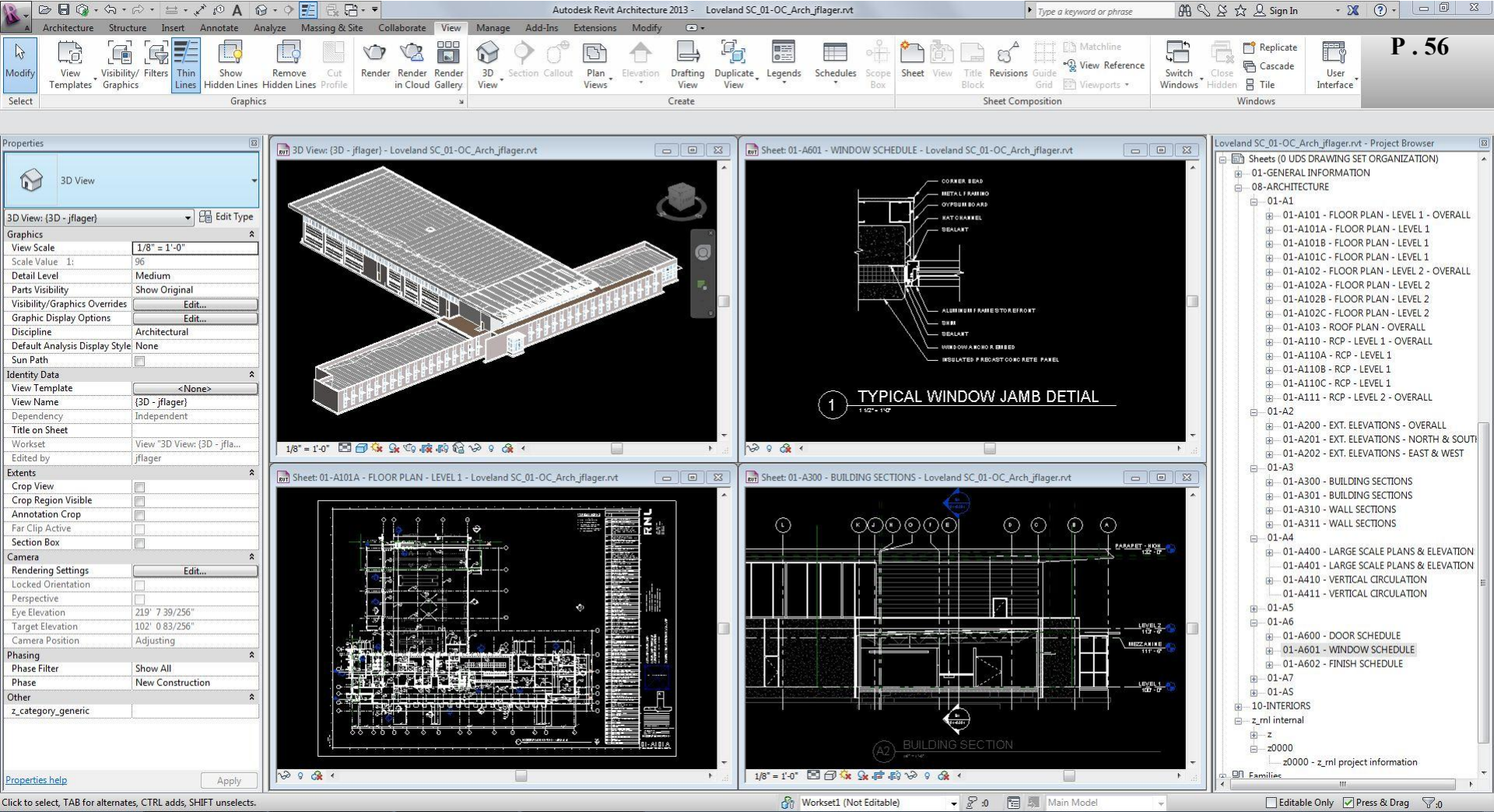
ENGINEERING	SOLID WASTE
STREETS	STORM WATER
PUBLIC AREA	SHARED AREAS
LEADERSHIP	UTILITIES



New Wash Building

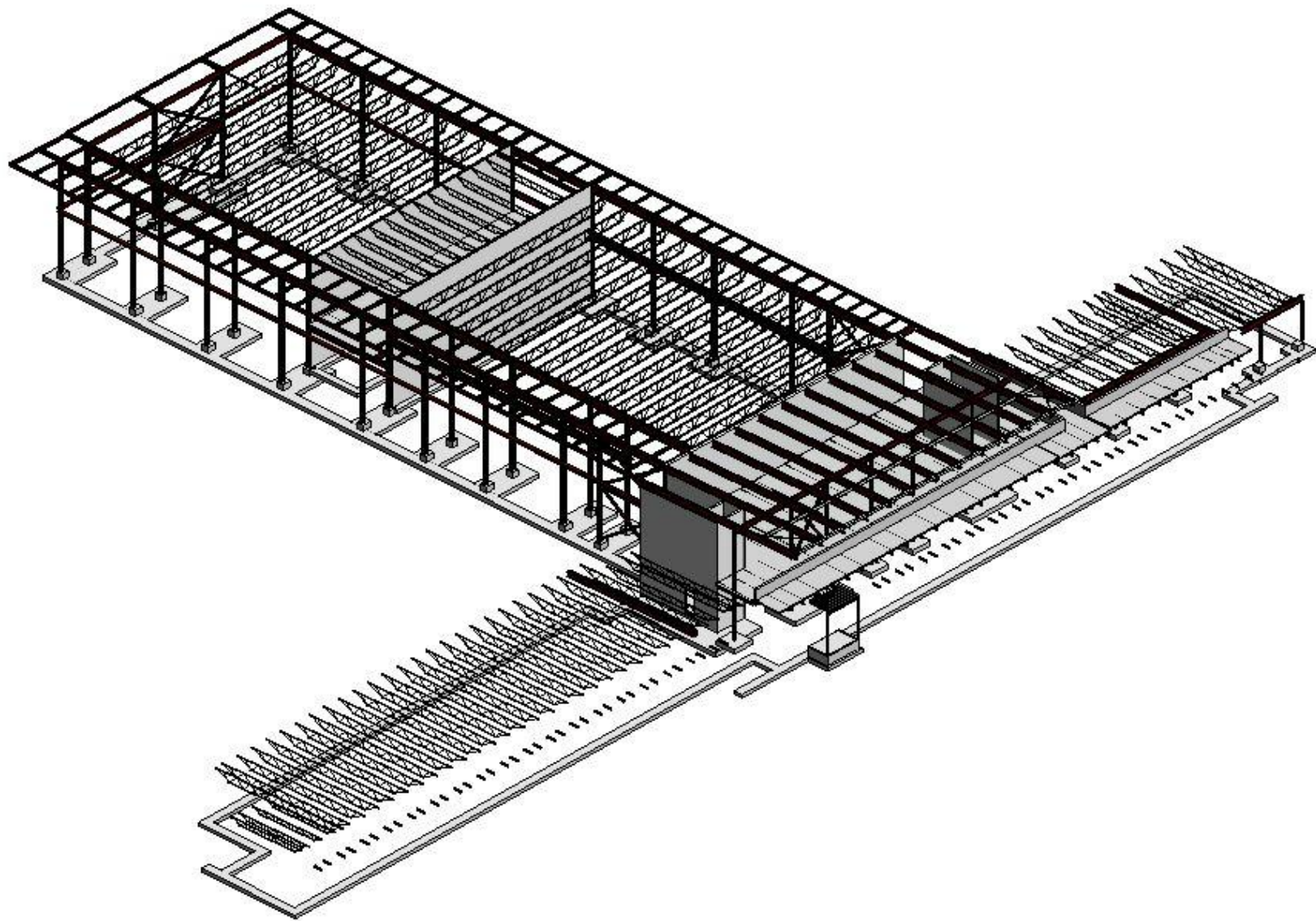


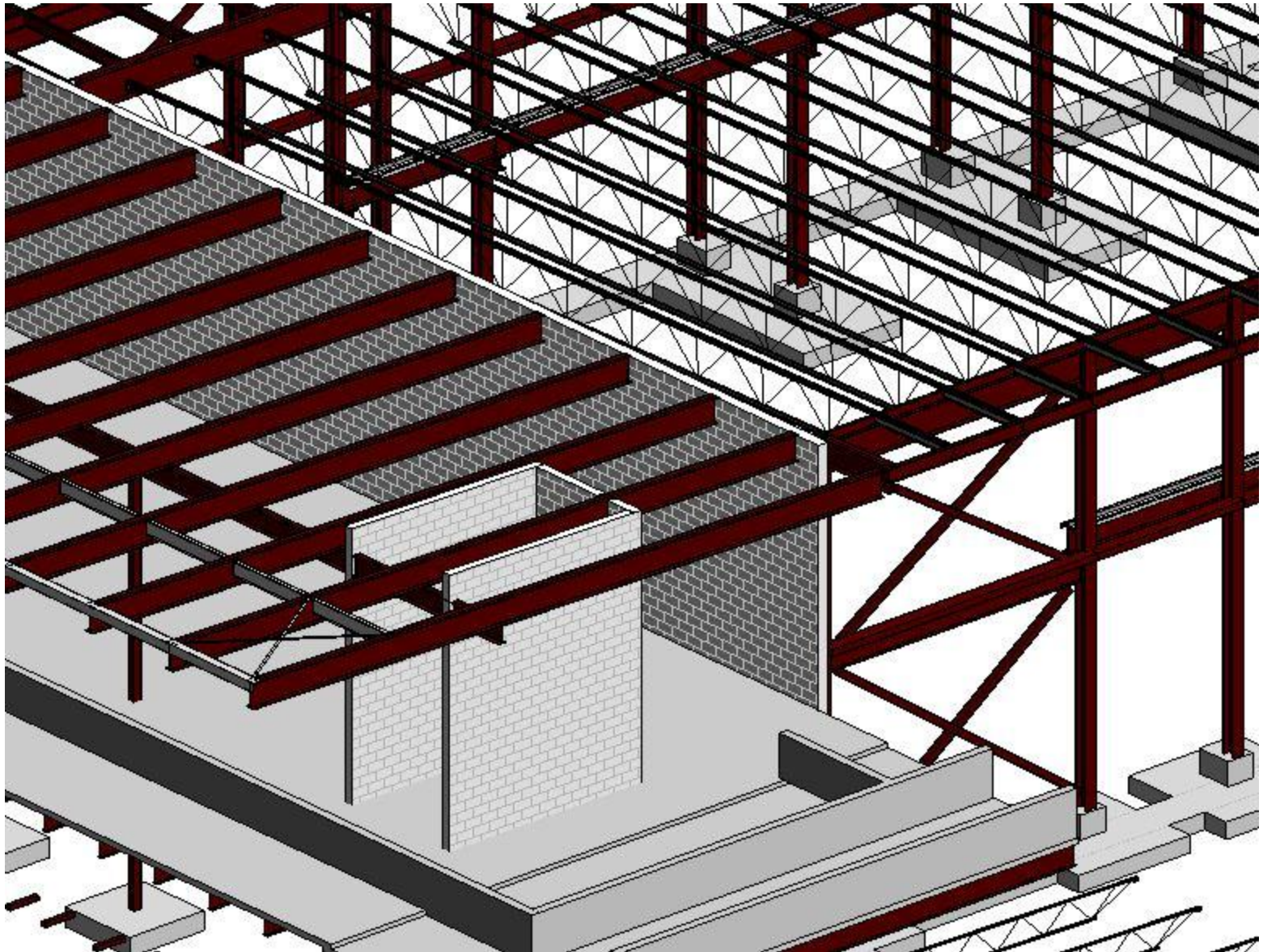
Remodeled Canopy Structure



Building Information Modeling (BIM) Design & Production Tool







ENERGY:

Surpass Baseline Standard:

30% - 39%

Renewables:

Able to Implement Easily

Daylighting:

Reduce artificial lighting loads and improves moral

Water:

Potable Water Consumption:

Low Flow Fixtures

Wash Bay:

Recycle 80% of all rinse water

Landscape:

Use only Xeric Natives

Site:

Stormwater Harvesting:

Clean and Detain all stormwater

Parking:

Minimize parking #s

Existing:

Canopy:

Re-Use/Re-Purpose

Heated Storage:

Improve efficiency

R2J:

Re-Purpose

Council Feedback & Direction

