

# Oil and Gas Public Forum

October 23, 2012

## **Recommended Areas for Regulation:**

1. Traffic Impacts (i.e., truck routing and construction of needed street improvements)
2. Use of City Streets and Access Roads
3. Emergency Response Plans
4. Building Code (i.e., building and grading permits)
5. Fire Code
6. Financial assurances related to City regulations
7. Impact fees
8. Other fees (i.e., land use application fees and building and fire code inspection fees)
9. Cultural resources impact (sensitive historical and archeological sites)
10. Floodway regulations
11. Water use requirements
12. Electricity use requirements
13. Special review process and permit
14. Fencing requirements
15. Setbacks for new development near existing and abandoned oil and gas wells
16. Erosion and stormwater control

# Oil and Gas Public Forum

October 23, 2012

## **Recommended Areas for Voluntary Enhanced Regulation:**

1. Setbacks
2. Wildlife mitigation
3. Reclamation
4. Open storage pits / Close looped systems
5. Noise abatement
6. Visual mitigation (i. e., color and height of facilities, landscaping and lighting)
7. Spill control
8. Waste disposal
9. Air quality
10. Water quality
11. Floodplain regulations
12. Chemical and hazardous material disclosure requirements
13. Requiring directional drilling

# Oil and Gas Public Forum

October 23, 2012

## **Areas Not Recommended for Regulation:**

1. Well siting
2. Hydraulic fracturing
3. Duplication of financial assurances required by the State
4. Injection wells
5. Exploration and production waste management facilities

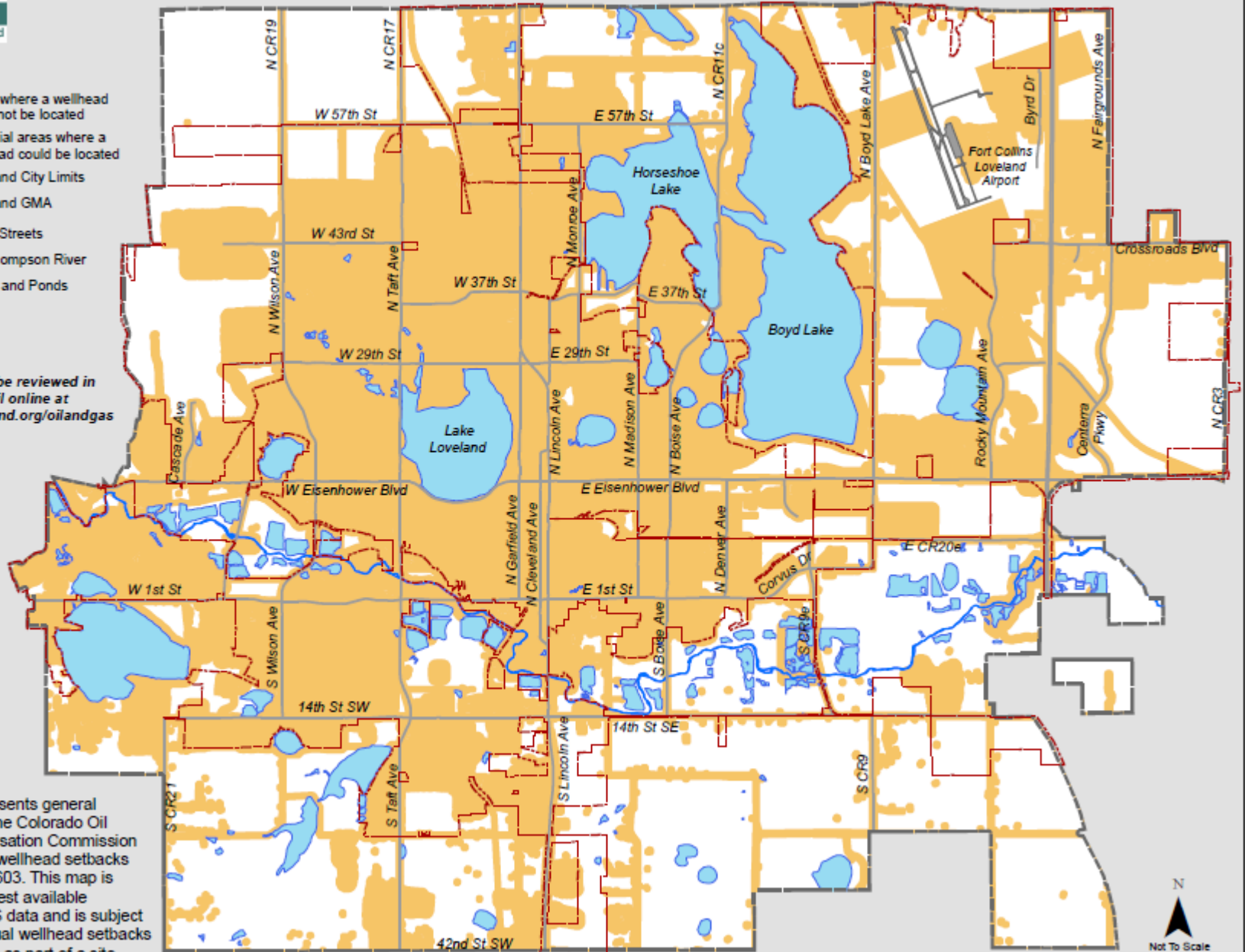


# Potential Areas for Future Oil & Gas Wellhead Locations

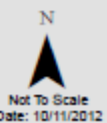
## Legend

- Areas where a wellhead could not be located
- Potential areas where a wellhead could be located
- Loveland City Limits
- Loveland GMA
- Major Streets
- Big Thompson River
- Lakes and Ponds

This map can be reviewed in more detail online at [www.cityofloveland.org/oilandgas](http://www.cityofloveland.org/oilandgas)



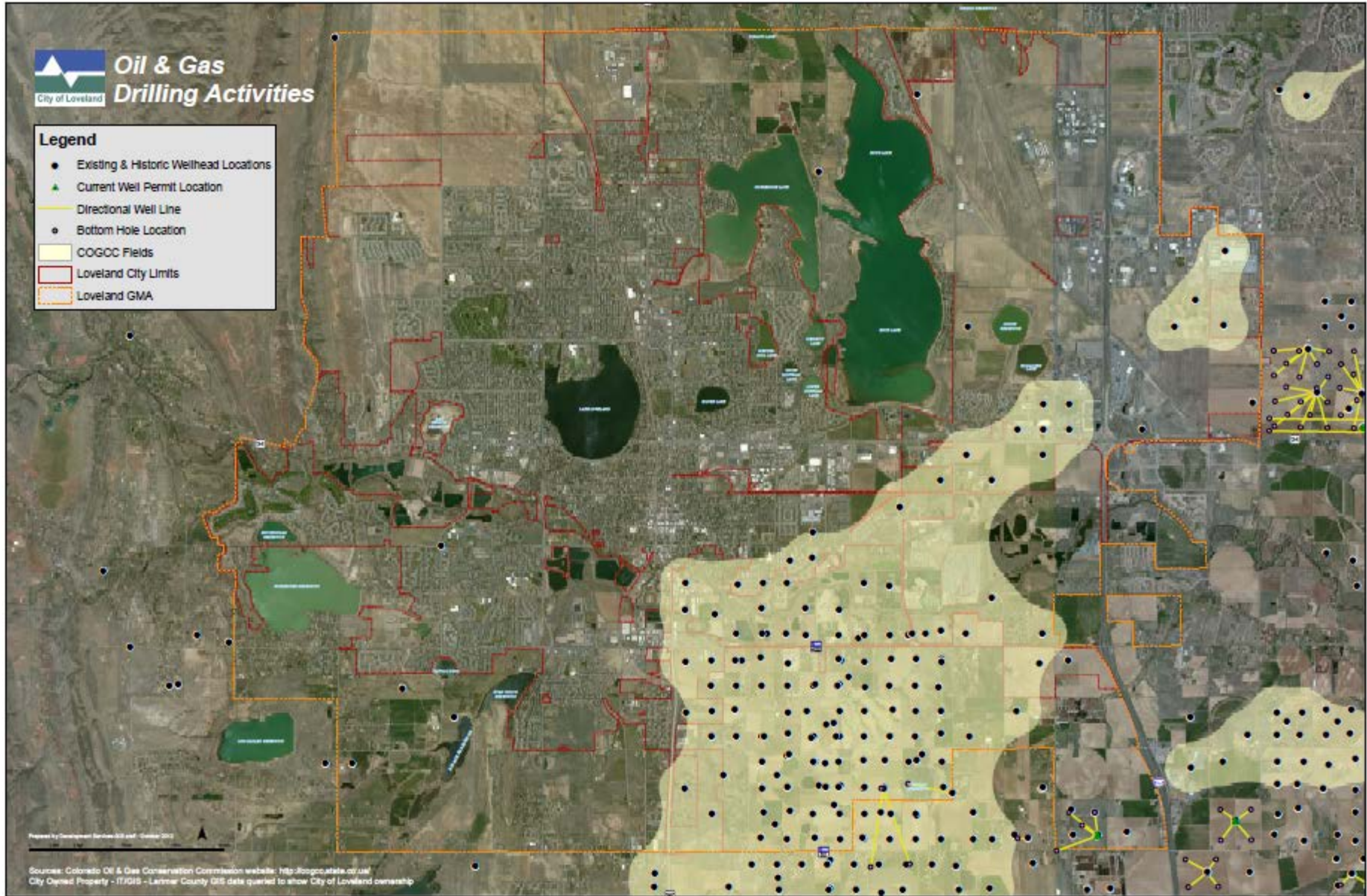
This map represents general application of the Colorado Oil & Gas Conservation Commission regulations on wellhead setbacks under Section 603. This map is based on the best available information/GIS data and is subject to change. Actual wellhead setbacks are established as part of a site specific analysis.





# Oil & Gas Drilling Activities

- Legend**
- Existing & Historic Wellhead Locations
  - ▲ Current Well Permit Location
  - Directional Well Line
  - Bottom Hole Location
  - COGCC Fields
  - Loveland City Limits
  - Loveland GMA



Prepared by Development Services GIS staff - October 2012

Sources: Colorado Oil & Gas Conservation Commission website: <http://cogcc.state.co.us/>  
City Owned Property - 11/2010 - Larimer County GIS data queried to show City of Loveland ownership